



TREE BOARD

Milwaukie Tree Board | 6101 SE Johnson Creek Blvd, Milwaukie, OR 97206

Board Members: Kathleen Brennan-Hunter (Chair), Ley Garnett (Secretary), Jon Brown, Alexis Barton, Olivia Padilla, Camden Mckone

Milwaukie Staff: Katie Gavares, Climate and Natural Resources Manager (staff liaison); Courtney Wilson, Urban Forester

Guest: Shonene Scott, Spatial Analyst, The Nature Conservancy, and Sergio Lopez, Climate & Urban Partnerships Lead, The Nature Conservancy

AGENDA: May 21, 2025 | 5:45 – 7:15 p.m. | 6101 SE Johnson Creek Blvd /Online Zoom Meeting

5:45 –5:50	Welcome and review agenda	All
5:50 –5:55	Review minutes from March and April	All
5:55 –6:00	Public Comments	All
6:00 –6:10	Staff Updates	Staff
6:10-7:00	Milwaukie's Tree Canopy Analysis	Staff
7:00 –7:15	Tree Board Vice-Chair Selection	All
7:15	Adjourn	



TREE BOARD MEETING MINUTES
6101 Johnson Creek Blvd. Milwaukie, OR 97206
5.21.2025

Hybrid / In- Person and Zoom Video Conference Meeting

Board Members Present:

Kathleen Hunter-Brenner
Ley Garnett
Alexis Barton
Jon Brown
Olivia Padilla

Board Members Absent:

Camden Mckone

Guest:

Shonene Scott, Spatial Analyst, and Sergio Lopez, Climate and Urban Partnerships Lead, The Nature Conservancy

Staff Members Present:

Katie Gavares, Climate and Natural Resources Manager

MEETING NOTES

March meeting minutes were approved. As there was no wuroum at the April tree Board meeting, there were no meeting minutes to approve.

Katie Gavares provided staff updates. They shared that Courtney Wilson's last day as Milwaukie's Urban Forester was May 5 and she started a new job at the City of Portland. The city is working on posting a Urban Forester job listing with the hopes to have someone on board by August. The board discussed the changes that were made in the job description to better retain a future Urban Forester. Staff shared the plan to maintain tree permit review but would be pasuing most programmamtic work until the new Urban Forester was hired. This includes developing a new invasive species list, developing a tree code specific Pre-App meeting for development, and meeting with local banks to discuss local tree performance bond options.

Two guests from The Nature Conservancy joined the meeting, Shonene Scott, Spatial Analyst, and Sergio Lopez, Climate and Urban Partnerships Lead. Sergio introduced the Connecting Canopies initiative that has been working on workforce development, engagement and data analysis to improve equitable tree canopy across the Portland

metro region. Shonene demoed the new Connecting Canopies tree mapping tool. This tool shows changing canopy, vulnerable populations by block group, and a matrix of each jurisdiction's tree related policies and programs. The board used this to explore the neighborhoods with the greatest tree canopy loss and the highest concentration of vulnerable communities.

The Board Meeting concluded at 7:15 pm.

DRAFT



CITY OF MILWAUKIE

Tree Board

May 21, 2025

Katie Gavares

Climate and Natural Resources Manager



Agenda



- 5:45 –5:50 Welcome and Introduction
- 5:50 –5:55 Review minutes from March and April
- 5:55 –6:00 Public Comments
- 6:00 –6:10 Staff Updates
- 6:10-6:45 Milwaukie's Tree Canopy Analysis
- 7:00- 7:15 Vice-Chair selection

Staff Updates



- Courtney's departure
- Urban Forester recruitment update and timeline
- Invasive Species List
 - Paused until new UF is onboarded
- Tree Preservation during development
 - Developing tree code specific Pre-App meetings
 - Meeting with OnPoint to discuss local tree performance bonds

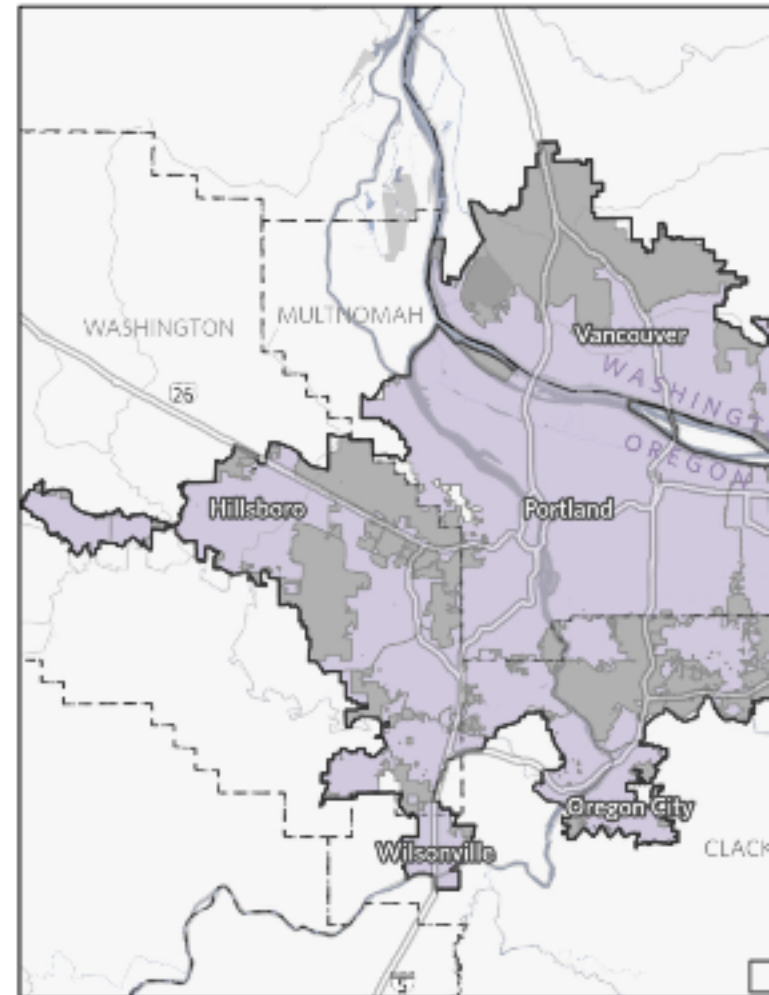
Assessment of Inequities in Urban Canopy Cover by Race and Income Across the Portland–Vancouver Metropolitan Area of Oregon and Washington

April 2024

Authors and Affiliations

Shonene Scott ¹, Sergio Lopez ¹, Zoë Hanley ¹, Fernanda Ribeiro ², Noah Young ², Vivek Shandas ³, and Ryan Haugo ¹

- **Equity analysis to investigate patterns of canopy cover and canopy change related to community characteristics**
- Portland-Vancouver Metro area, portions of 4 counties, 27 cities
- **Identified areas to focus on to address inequalities**



Canopy Cover & Change, 2014-2020



Community Variables

American Community Survey 5-year
(2016-2020),

- Hispanic or Latino Origin by Race
- Ratio of Income to Poverty Level

Summarized to Census block groups

- % BIPOC: other than white, non-Hispanic
- % low-income: income < 2x federal poverty
- % Canopy cover in 2020
- % Net canopy change

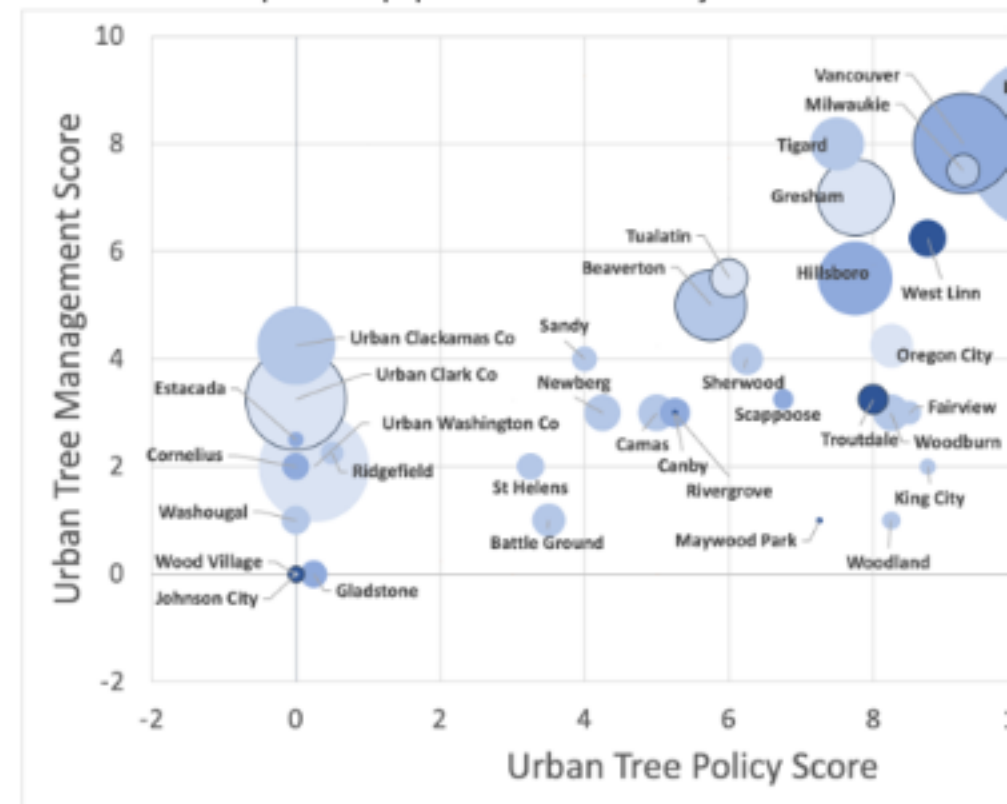


Portland-Vancouver Regional Urban Tree Policy and Program Summary

- Policies and tree programs impacting equitable distribution of trees
- Policy barriers to establishing & sustaining workforce development programming and small urban forestry business

Figure 11. Overall urban tree policy and program scores for the Portland-Vancouver metropolitan region.

Bubble size corresponds to population size for each jurisdiction.





Urban tree policy:

P1	Have a tree preservation/removal ordinance?
P2	Have a tree code that governs street trees?
P3	Have a tree code that governs park/public trees?
P4	Have a tree code that governs private yard trees?
P5	Require tree removal permits with development or land division?
P6	Require tree removal permits in non-development situations?
P7	Have liberal exemptions for tree removal?
P8	What is the minimum size of regulated tree?
P9	Have a tree code that applies across all land uses and development?
P10	Have a tree code that applies in single-family residential zones?
P11	Have a tree code that applies in multi-family residential/mixed use zones?
P12	Have a tree code that applies in commercial/industrial zones?
P13	Require tree protection measures during development?
P14	Mitigate for trees approved for removal?
P15	Have tree mitigation ratios greater than 1:1?

Tree code Governance Extent Score

Tree Preservation Score

Tree policy land use Comprehensiveness Score

Overall Tree Policy Score

Urban tree management:

M1	Have street tree planting standards?
M2	Have a preferred tree species list?
M3	Have an adopted urban forest management plan, resolution or ordinance?
M4	Have policy goals related to urban tree canopy cover?
M5	Have an established urban tree community council?
M6	Have urban tree canopy cover targets?
M7	Have a street tree inventory for all or a portion of the city?
M8	Have an inventory of heritage/significant trees?
M9	Have an inventory of urban tree cover?

Overall Tree Management Score

Overall Tree policy & Management Score

Looking Ahead



	Updated Calendar
January 2025	Priority Setting
February 2025	Roadmap for 2025 Priorities
March 2025	Milwaukie Tree List
April 2025	Coordinating Urban Forestry Management and Affordable Housing Development
May 2025	Analysis of Milwaukie's tree canopy
June 2025	Strategies to reach 40% tree canopy
July 2024	Urban Forestry Outreach and Engagement
August 2025	SUMMER BREAK
September 2024	Strategies to reach 40% tree canopy (cont.)
October 2025	UFMP Equity Implementation Plan
November 2025	Takeaways from Summer Engagement
December 2025	WINTER BREAK

Thank you!

Katie Gavares

Climate and Natural Resources Manager

GavaresK@milwaukieoregon.gov

503-786-7668

Courtney Wilson

Urban Forester

WilsonC@milwaukieoregon.gov

503-786-7655

Learn more at
milwaukieoregon.gov/trees

