





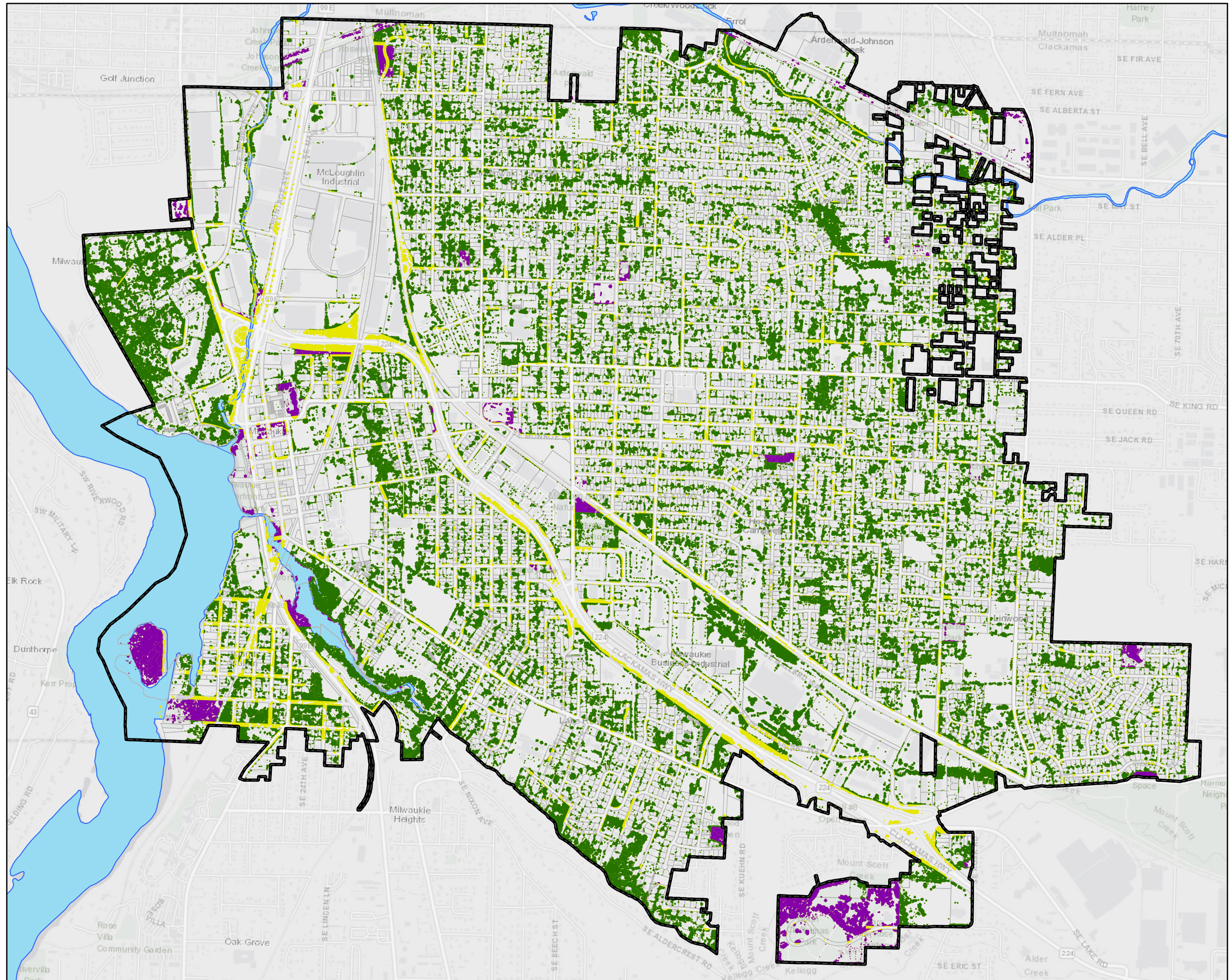
## City of Milwaukie 2014 Tree Canopy Coverage Over Private & Public Property

-  City of Milwaukie
-  Canopy Over Private Parcels
-  Canopy Over Public Parcels
-  Canopy Over Public Right-of-Way

*Note: Developed using LiDAR and imagery collected in the summer of 2014. Canopy was detected using a combination of normalized difference vegetation index (NDVI) from the imagery and feature heights from LiDAR.*

*Public parcels defined as any parcel with owner listed as 'City of Milwaukie', 'City of Portland', 'Clackamas County', 'Metro', or 'State of Oregon.'*

*Percentage of tree canopy was determined by removing all tree canopy found within publicly-owned parcels or outside of parcel boundaries. In 2014, the estimate for tree canopy over private property was roughly 676.7 acres, representing 80% of Milwaukie's 844.57 total acres of canopy.*



Data Sources: City of Milwaukie GIS, Clackamas County GIS, Metro Data Resource Center

Date: Wednesday, July 18, 2018

The information depicted on this map is for general reference only. The City of Milwaukie cannot accept any responsibility for errors, omissions or positional accuracy. There are no warranties, expressed or implied, including the warranty of merchantability or fitness for a particular purpose, accompanying this product. However, notification of errors would be appreciated.

GIS Coordinator  
City of Milwaukie  
6101 SE Johnson Creek Blvd.  
Milwaukie, OR 97206  
(503) 786-7687

0 0.25 0.5  
Miles