

Vegetation Clearance Requirements

Right-of-way

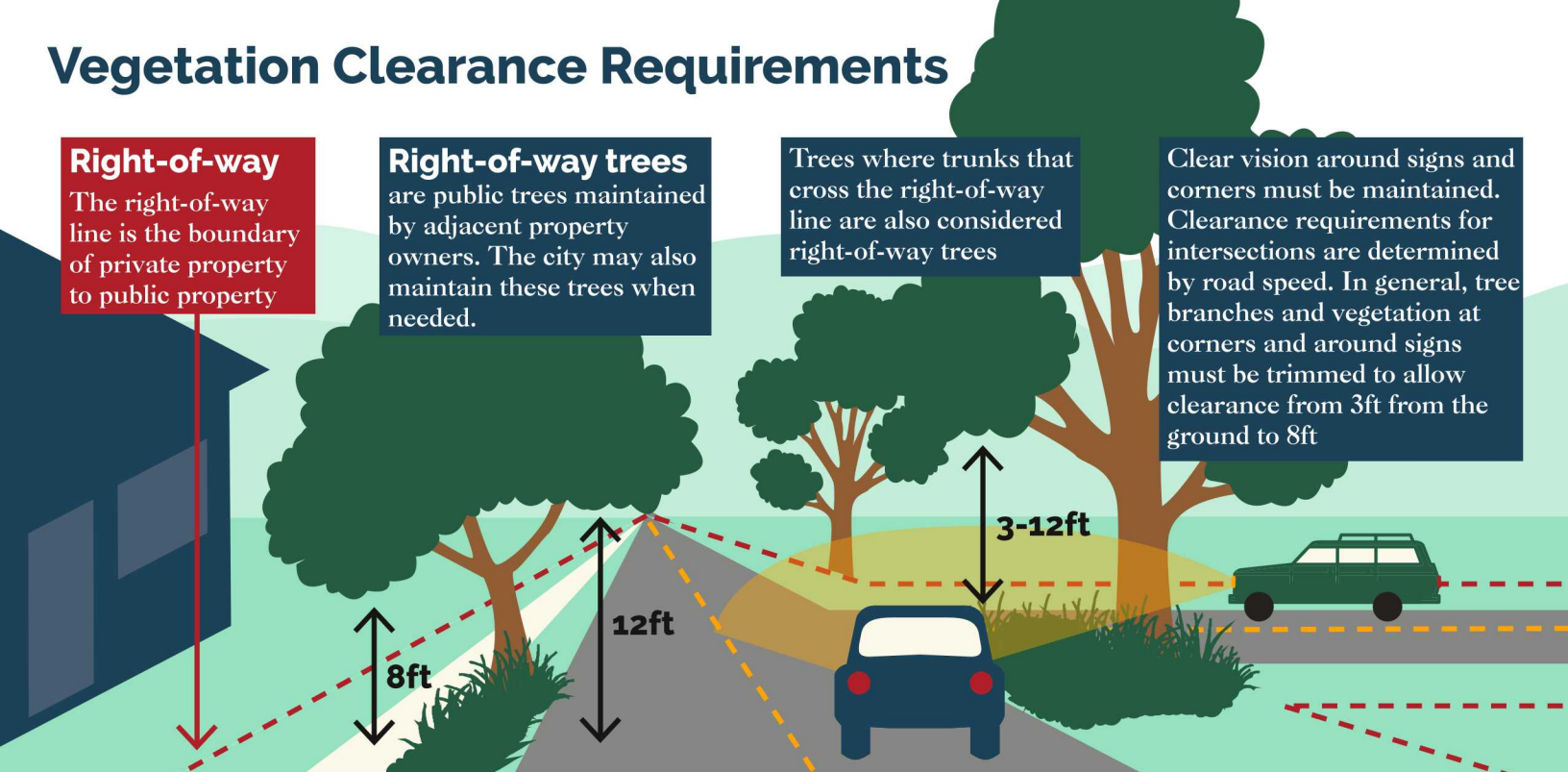
The right-of-way line is the boundary of private property to public property

Right-of-way trees

are public trees maintained by adjacent property owners. The city may also maintain these trees when needed.

Trees where trunks that cross the right-of-way line are also considered right-of-way trees

Clear vision around signs and corners must be maintained. Clearance requirements for intersections are determined by road speed. In general, tree branches and vegetation at corners and around signs must be trimmed to allow clearance from 3ft from the ground to 8ft



Removing trees

To remove any public trees, including street trees or trees in the right-of-way, a public tree permit must be submitted and approved by the city. A public tree permit is also needed for pruning more than 20% of the total tree canopy as this can be dangerous for the tree's health if done incorrectly.



**MILWAUKIE
URBAN FOREST**

Growing Trees
Growing Community