



CITY OF MILWAUKIE

MILWAUKIE PUBLIC WORKS

6101 SE Johnson Creek Blvd

Milwaukie OR, 97206

503.786.7699

erosioncontrol@milwaukieoregon.gov

EROSION CONTROL PERMIT PROGRAM

PERMIT PROCESS:

- Projects that disturb **more than 500 square feet** of land within the City of Milwaukie require an issued erosion control permit. The customer applies for erosion control as a "site development" permit through the Accela e-permitting website.
- A preliminary erosion control inspection must be scheduled, and erosion control measures must be put in place and approved **before** excavation on site can start. The foundation inspection will not be scheduled unless the site has passed the erosion control installation inspection.
- At a minimum, city staff will randomly inspect the site once during the project to ensure compliance with city codes.
- All temporary erosion control measures must remain in place until permanent landscaping is installed and/or established without any visible dirt. To qualify for Certificate of Occupancy, the permit holder must schedule a Final Erosion Control Inspection and be approved by a city inspector.

ENFORCEMENT:

- ***VIOLATION OF MILWAUKIE MUNICIPAL CODE 16.28 (Erosion Control)*** Continued failure to comply with the terms of this inspection will result in the issuance of a civil citation, stop work order, and/or a fine of \$300 for every day the violation is allowed to exist.
- ***VIOLATION OF MILWAUKIE MUNICIPAL CODE 13.14.105 (Stormwater Discharge Regulations)*** Continued failure to comply with the terms of this inspection will result in the issuance of a civil citation, stop work order, and/or a fine of \$1000 for every day the violation is allowed to exist.
- Stop work orders will be issued on sites that continue to fail to comply with erosion control requirements.

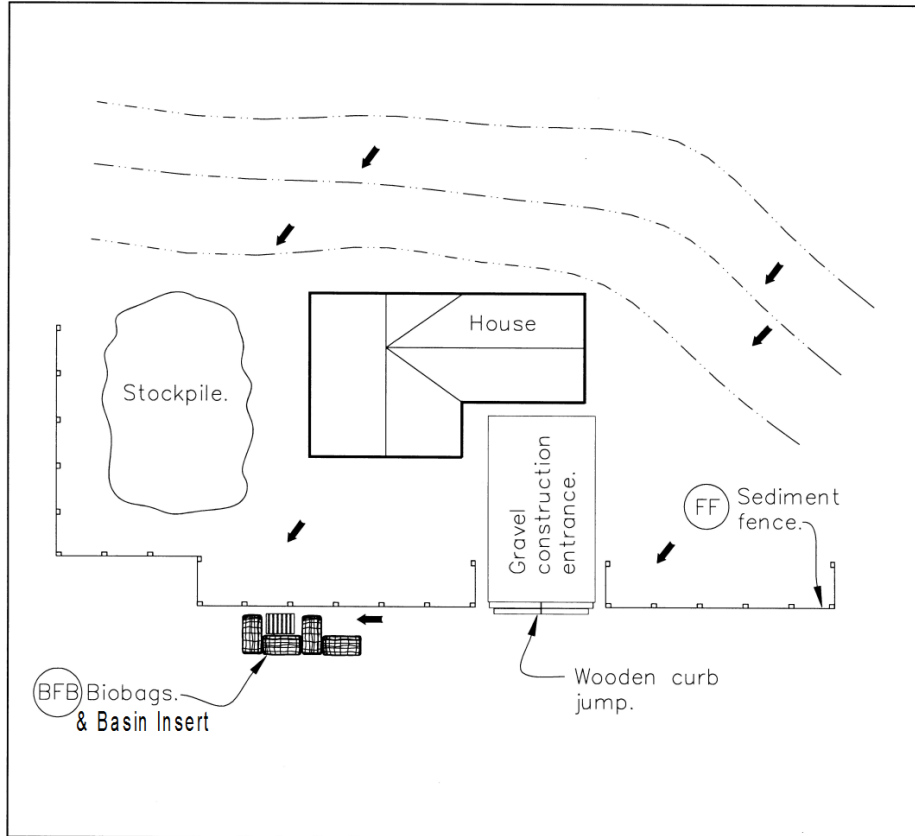
This is intended only as a partial summary of the requirements. In cases where erosion is occurring, the City may require the Applicant to implement interim control measures prior to submittal of a revised erosion control plan and without limiting the City's right to undertake enforcement measures. Upon approval of the revised plan by the city, the permittee shall immediately implement the revised plan. (Ord. 1899 § 1, 2002

EROSION CONTROL AND SEDIMENT PREVENTION REQUIREMENTS:

1. Owner/Permittee is responsible for monitoring, maintaining, and repairing all erosion control measures as site conditions change.
2. All erosion prevention measures shall be in place, functional, and approved in accordance with the approved Erosion Prevention and Sediment Control plan prior to commencement of construction activities. All soil disturbance and construction activities shall be conducted in accordance with MMC Chapter 16.28 Erosion Control and any applicable local, state, or federal requirements.
3. Sediment and pollutants shall not be washed into storm sewers, drainage ways, or water bodies and is subject to MMC 13.14.105 (Stormwater discharge Regulations). Dry sweeping shall be implemented to clean up construction areas to prevent release of sediments into the storm system.
4. Disposal of sediment laden water into the wastewater system is prohibited unless prior written approval is received from the City of Milwaukie Wastewater Division Manager. Sediment laden water shall be pumped through an approved sediment control BMP prior to disposal into the wastewater system.
5. Implementation dates of wet weather measures are October 1st to May 31st.
6. All stormwater inlets must be protected, measures maintained, and sediment/debris cleaned from the area as necessary.
7. Any measures deemed inadequate by the inspector or sites that have the potential to threaten the water quality of the city's stormwater system shall be rectified by the contractor upon notice.
8. Sediment shall be removed by scraping, sweeping, or other approved removal techniques. Do not flush sediment down storm drains. Sweepings shall be collected and properly disposed of in the trash.
9. Gravel construction entrances must be installed at the start of the project to prevent tracking and for initial inspection approval. Gravel or dirt curb jumps are not allowed (use wooden step style).
10. Sediment fences must be trenched in and installed as per manufacturer's specifications demonstrated in the Technical Guidance Handbook. Sediment fencing must be of stitched-loop design for erosion control approval. Stake pockets must face upslope or toward project. Refer to detail drawing #4-15. Staped fencing will not receive approval.
11. Stockpiles with potential for runoff reaching the stormwater system must be covered with plastic sheeting or straw mulch. Temporary stabilization and covering of soil stockpiles shall occur at the end of each workday.

12. Tracking dirt and debris onto streets is not allowed. All tracking and debris on streets that occurs must be removed at the end of each day or sooner if it can be spread by traffic or reach the public stormwater system.
13. Written spill prevention and response procedures shall be developed, maintained, and implemented on the construction site.
14. Saw cutting slurry and debris shall be vacuumed and removed from all impervious surfaces. Vacuumed saw cutting slurry shall be properly disposed of and not discharged into the storm system.
15. Watertight trucks shall be used to transport saturated soil from the construction site.
16. All toxic or hazardous materials shall be properly stored, applied, and disposed of.
17. An area shall be designated for washing out concrete trucks such that runoff from washing activities is contained and do not leave the site or enter the storm system.
18. Paving in wet weather when paving chemicals can runoff into the storm system is prohibited.
19. Drainage from springs or groundwater must be addressed during construction by the contractor. Discharge from groundwater encountered on the site must be clean of sediment or pollutants.
20. Areas subject to wind erosion shall use appropriate dust control measures including the application of a fine spray of water, plastic sheeting, straw mulch, or other approved measures.
21. Materials shall not be stockpiled on public streets or in the right of way for longer than immediate use.

Sample Erosion Control Plan



Construction Site

An Erosion Control plan drawn to scale will show:

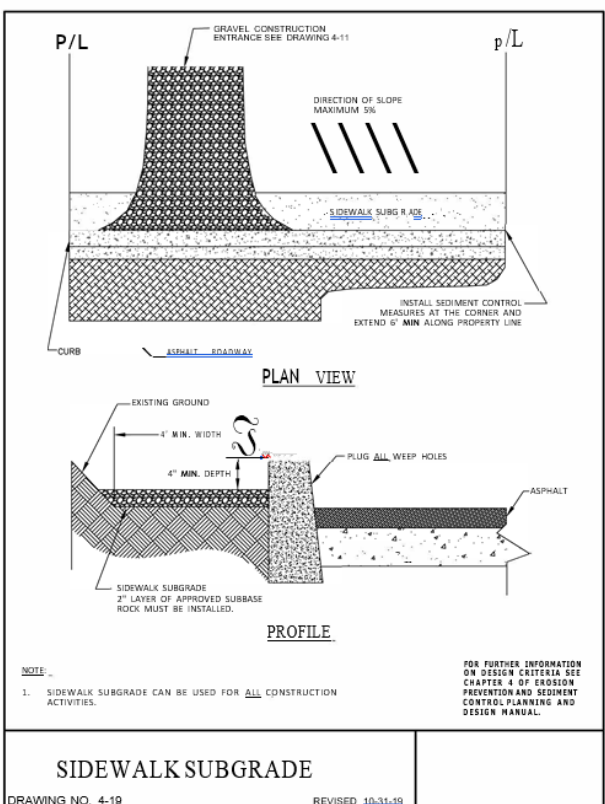
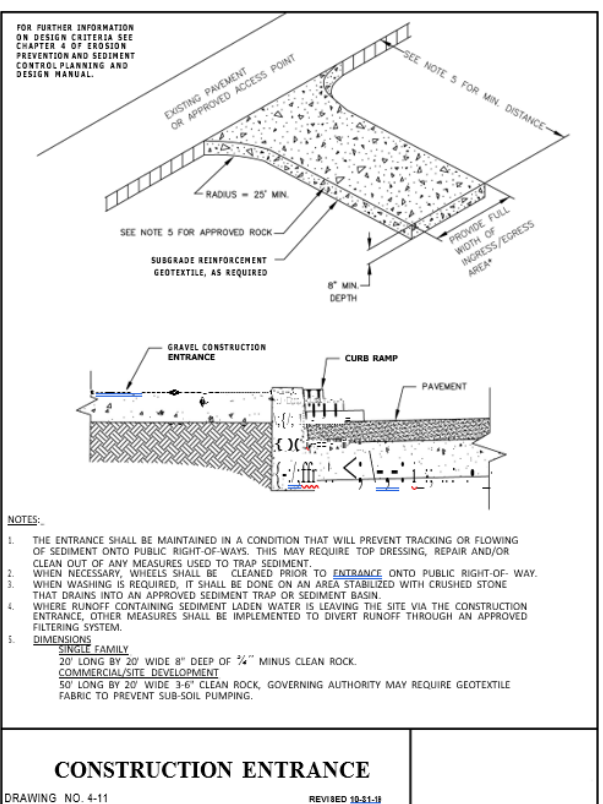
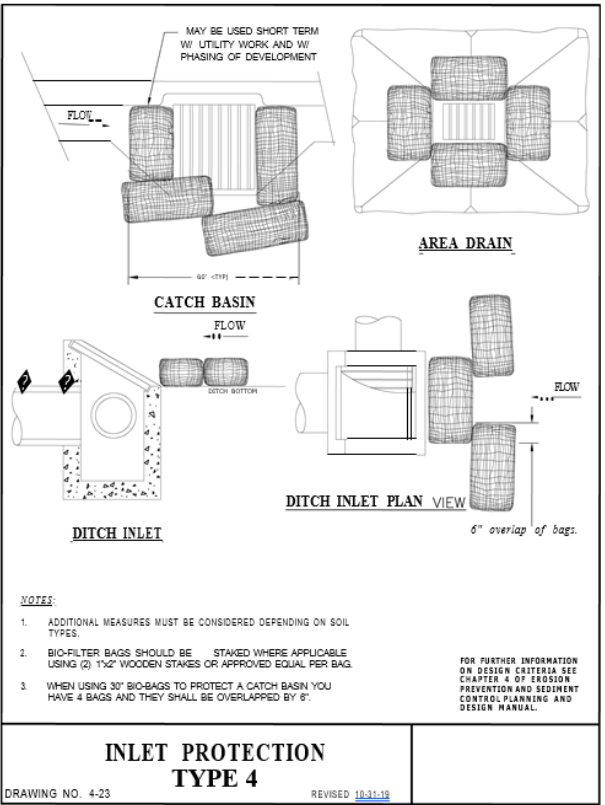
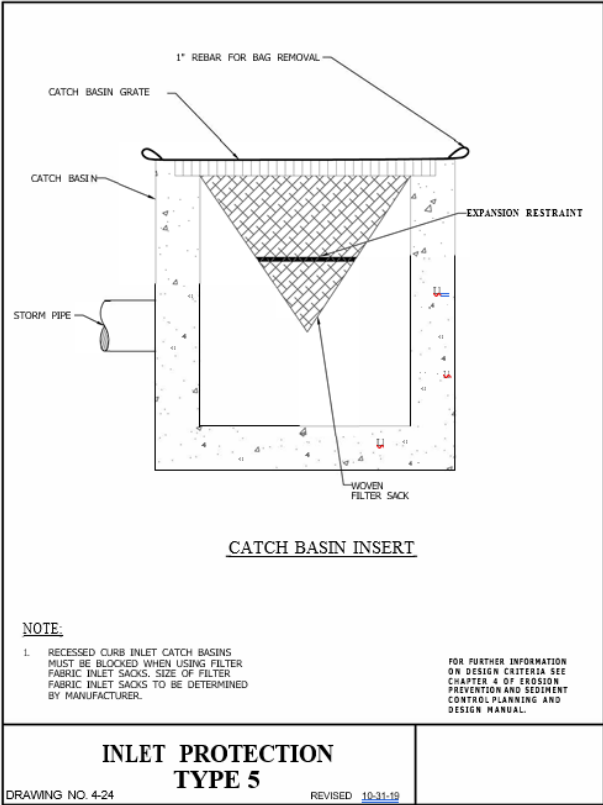
- Contour lines with elevations to show slope and/or retaining walls.
- Location for storage of excavated materials
- Location of gravel construction entrance
- Property lines and distances to buildings
- Placement of erosion control devices
- Location of nearest City storm drain inlet and how it is protected

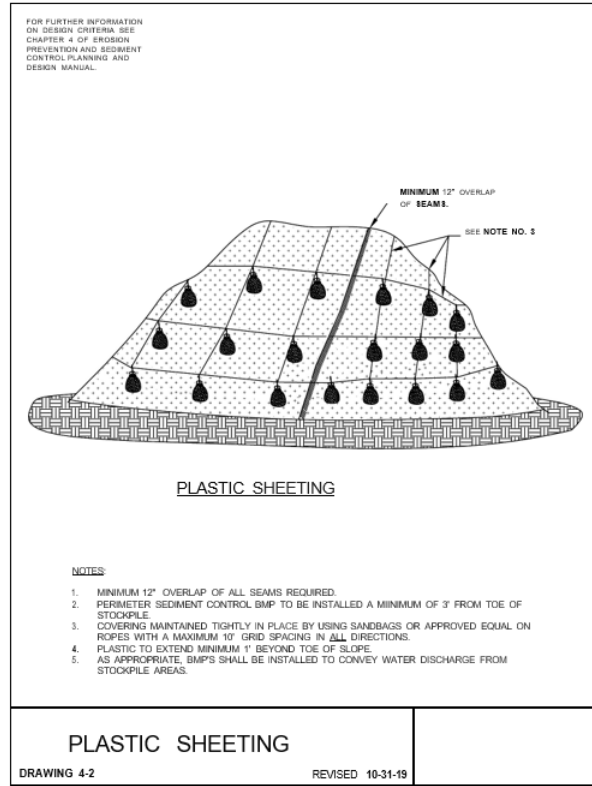
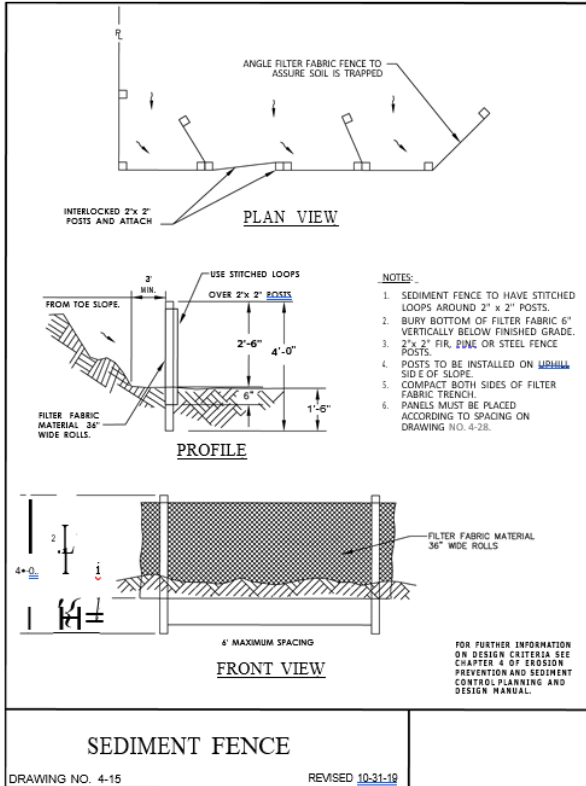
Generally, all Erosion Control plans will include these control devices:

- Gravel Construction Entrance Detail Drawing 4-11
- Sediment Fence Detail Drawing 4-15
- Inlet protection (catch basins) Detail Drawings 4-23 and 4-24 Catch basins will include bark type bags and non-woven geotextile basin inserts.

Wet weather measures (October 1st through April 30th):

- Straw Mulch Covering (exposed soil)
- Stockpile protection (excavated materials).





Sediment fences must be trenched in and installed as per manufacturer's specifications. Sediment fencing must be of stitched-loop design for erosion control approval. Stake pockets must face upslope or toward project. Refer to detail drawing #4-15.

Stapled fencing will not receive approval.