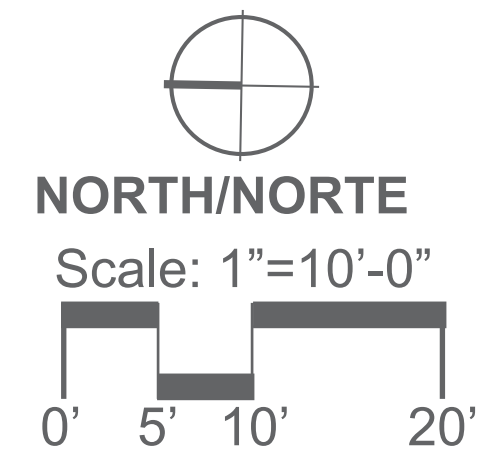


LEGEND/LEYENDA

- | | | | |
|--|---|---|---|
| 1 Stormwater Swale
(Pantano de aguas de tormentas) | 4 Bike Rack
(Portabicicletas) | 7 Picnic Table
(Mesa de picnic) | 10 Park Entry Sign
(Letrero de entrada al parque) |
| 2 6'-8' Wide Pathway
(Camino 6' - 8' de ancho) | 5 Embankment Slide
(Terraplén con resbaladeras) | 8 Picnic Shelter
(Área cubierta para comer) | 11 Drinking Fountain
(Fuente de Agua) |
| 3 Low Retaining Wall
(Muro de contención pequeño) | 6 Bench
(Banco) | 9 Water Feature
(Instalación de Agua) | |



Embankment Slide | Terraplén con resbaladeras



Water Feature | Instalación de Agua



Picnic Shelter | Área Cubierta para Comer

FINAL SITE PLAN

BALFOUR PARK

MILWAUKIE, 3039 SE BALFOUR ST.

October, 2023/ Octubre 2023



izo

jla
Public Involvement

GREENWORKS™



CITY OF MILWAUKIE -
BALFOUR PARK
FINAL DRAFT - REV 2



COLOR KEY	POST & COMPONENTS	
	COBALT	TEAL

PLAYGROUND DESIGN

BALFOUR PARK

MILWAUKIE, 3039 SE BALFOUR ST.

October, 2023/ Octobre 2023



izo

jla
Public Involvement

GREENWORKS™



CITY OF MILWAUKIE -
BALFOUR PARK
FINAL DRAFT - REV 2



IHD 490 23R2 Color Option :A

COLOR KEY	POST & COMPONENTS
	COBALT
	TEAL

PLAYGROUND DESIGN

BALFOUR PARK

MILWAUKIE, 3039 SE BALFOUR ST.

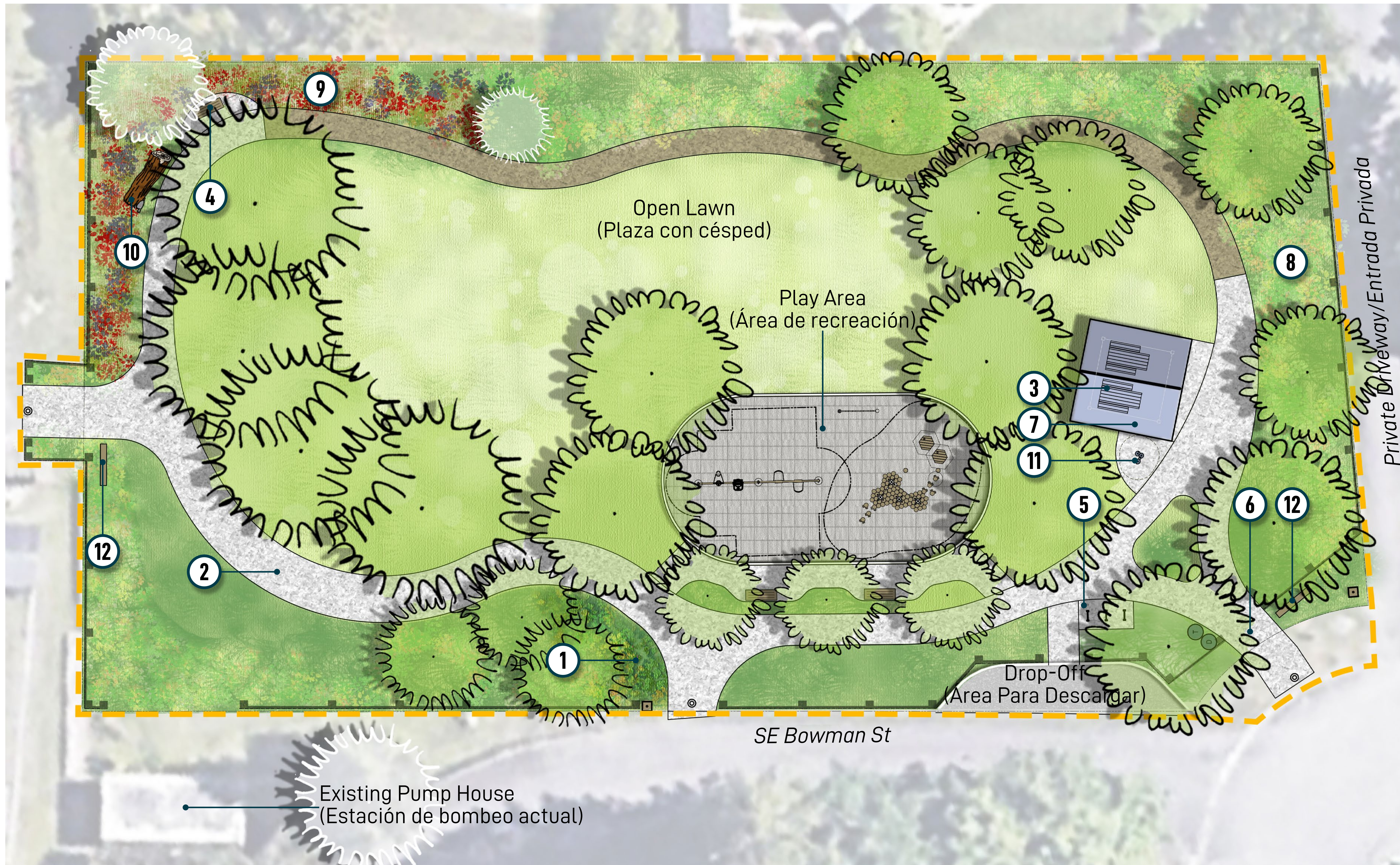
October, 2023/ Octobre 2023



izo

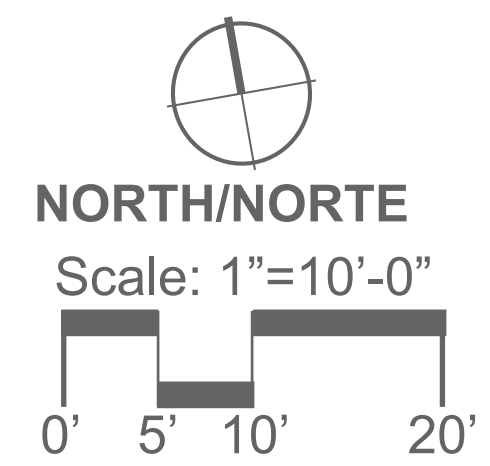
jla
Public Involvement

GREENWORKS™



LEGEND/LEYENDA

- | | | | |
|---|--|--|--|
| 1 Stormwater Swale
(Pantano de aguas de tormentas) | 4 Bench
(Banco) | 7 Picnic Shelter
(Área cubierta para comer) | 10 Log
(Leño) |
| 2 6'-9' Wide Pathway
(Camino 6' - 9' de ancho) | 5 Bike Rack
(Portabicicletas) | 8 Screening Shrubs
(Arbustos de ocultación) | 11 Drinking Fountain
(Fuente de Agua) |
| 3 Picnic Table (2)
(Mesa de picnic -2) | 6 Main Park Entry
(Entrada principal) | 9 Pollinator Garden
(Jardín de Polinizadoras) | 12 Park Entry Sign
(Letrero de entrada al parque) |



Picnic Shelter | Área Cubierta para Comer



Pollinator Garden | Jardín de Polinizadoras



Tree Grove | Arboleda de árboles

FINAL SITE PLAN
BOWMAN-BRAE PARK

MILWAUKIE, 4225 SE BOWMAN ST.

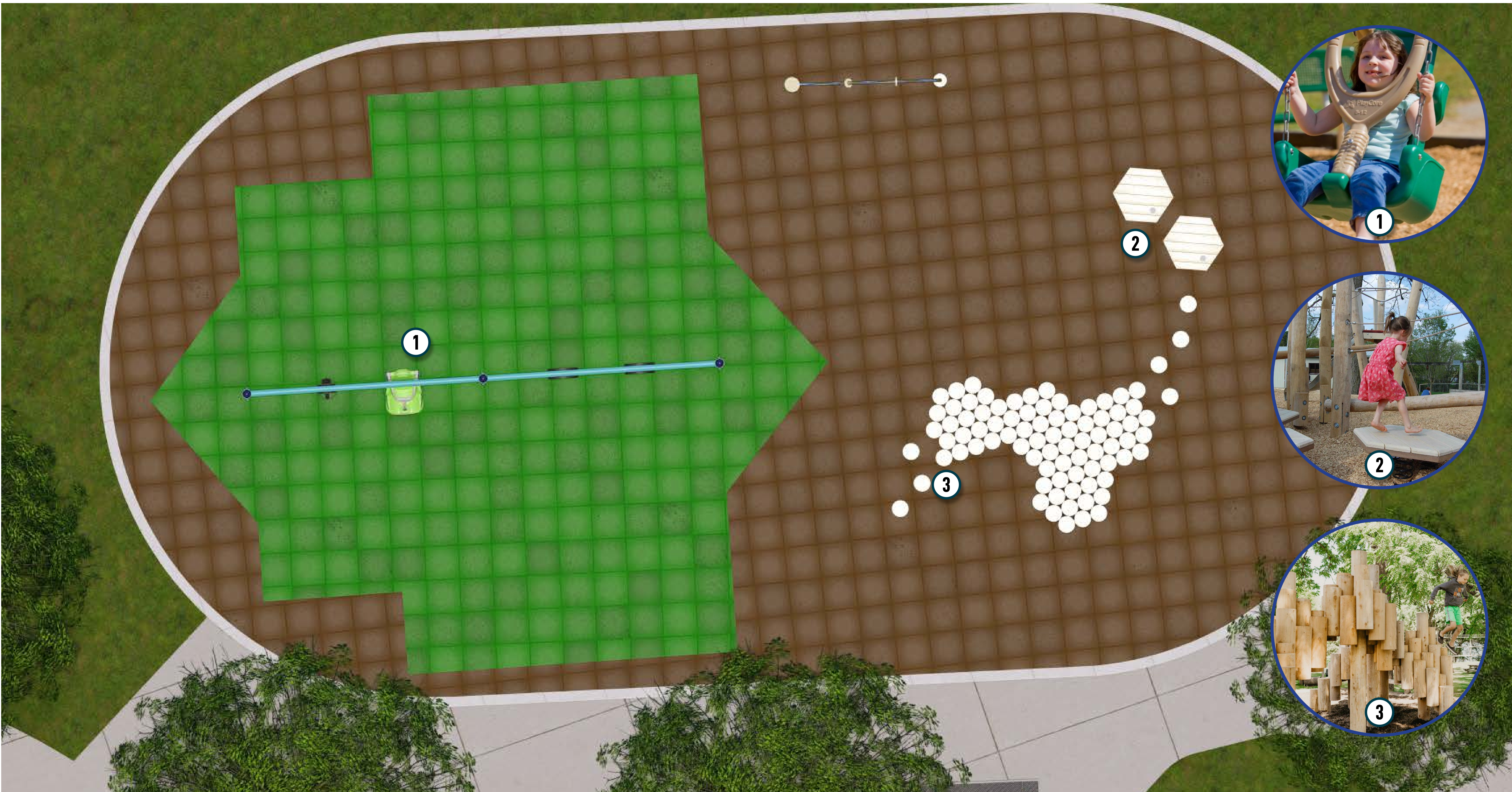
October, 2023/ Octubre 2023



izo

jla
Public Involvement

GREENWORKS™



CITY OF MILWAUKIE
BOWMAN-BRAE PARK
REVISION 1

IHD 489 23R1 Color Option :2



COLOR KEY	WOOD STAIN	POST & COMPONENTS		ROTO
	NATURAL WOOD	TEAL	COBALT	LIME

PLAYGROUND DESIGN

BOWMAN-BRAE PARK

MILWAUKIE, 4225 SE BOWMAN ST.

October, 2023/ Octobre 2023





CITY OF MILWAUKIE
BOWMAN-BRAE PARK
REVISION 1



IHD_489_23R1 Color Option :2

COLOR KEY	WOOD STAIN	POST & COMPONENTS		ROTO
	NATURAL WOOD	TEAL	COBALT	LIME

PLAYGROUND DESIGN

BOWMAN-BRAE PARK

MILWAUKIE, 4225 SE BOWMAN ST.

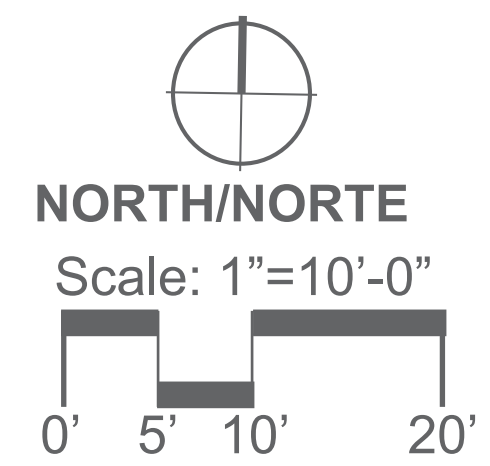
October, 2023/ Octobre 2023





LEGEND/LEYENDA

- | | | | | |
|--|---|---|---|---|
| 1 Stormwater Swale
(Pantano de aguas de tormentas) | 4 Bike Rack
(Portabicicletas) | 7 Pond Platform
(Plataforma del Estanque) | 10 Log
(Leño) | 13 Park Entry Sign
(Letrero de entrada al parque) |
| 2 Stage
(Escenario) | 5 Riparian Area
(Área Ribereño) | 8 Rock Steppers
(Adoquines) | 11 Drinking Fountain
(Fuente de Agua) | |
| 3 Bench
(Banco) | 6 Native Planting
(Planta Nativa) | 9 Picnic Table
(Mesa de pícnic) | 12 Soft Surface Trail
(Sendero de Superficie Suave) | |



Rock Steppers | Adoquines



Landscape Log | Leño



Soft Surface Trail | Sendero de Superficie Suave

FINAL SITE PLAN

SCOTT PARK

MILWAUKIE, 10660 SE 21ST AVE.

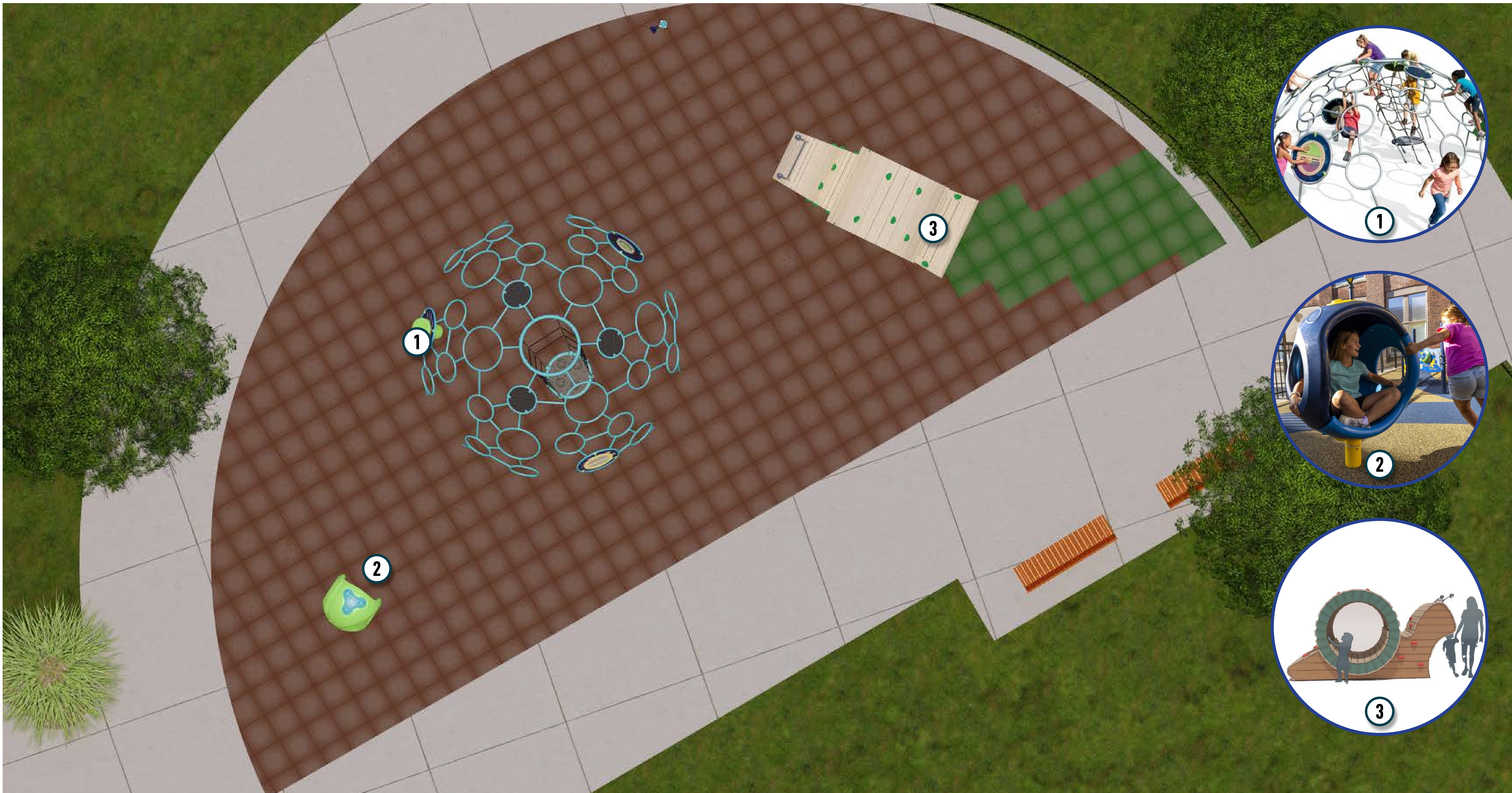
October, 2023/ Octubre 2023



izo

jla
Public Involvement

GREENWORKS™



CITY OF MILWAUKIE
SCOTT PARK
REVISION 2



IHD 491 23R2 Color Option : 2

COLOR KEY	WOOD STAIN	POST & COMPONENTS	ROTO	SHEET PLASTIC	ROPE
HUNTER GREEN	FERN GREEN	AVOCADO	TEAL	COBALT	BLACK
				COBALT-SAND	

PLAYGROUND DESIGN

SCOTT PARK

MILWAUKIE, 10660 SE 21ST AVE.

October, 2023/ Octobre 2023



izo

jla
Public Involvement

GREENWORKS™



CITY OF MILWAUKIE
SCOTT PARK
REVISION 2



IHD_491_23R2 Color Option :2

COLOR KEY	WOOD STAIN	POST & COMPONENTS	ROTO	SHEET PLASTIC	ROPE
HUNTER GREEN	FERN GREEN	AVOCADO	TEAL	COBALT	LIME
				COBALT-SAND	BLACK

PLAYGROUND DESIGN

SCOTT PARK

MILWAUKIE, 10660 SE 21ST AVE.

October, 2023/ Octobre 2023



izo

jla
Public Involvement

GREENWORKS™