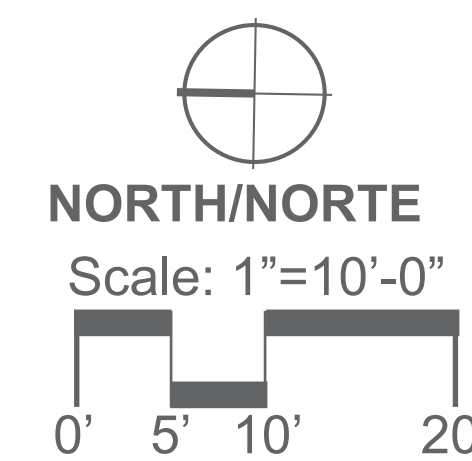


LEGEND/LEYENDA

- 1** Stormwater Swale (Pantano de aguas de tormentas)
- 2** 6'-8' Wide Pathway (Camino 6' - 8' de ancho)
- 3** Low Retaining Wall (Muro de contención pequeño)
- 4** Bike Rack (Portabicicletas)
- 5** Embankment Slide (Terraplén con resbaladeras)
- 6** Bench (Banco)
- 7** Picnic Table (Mesa de picnic)
- 8** Picnic Shelter (Área cubierta para comer)
- 9** Water Feature (Instalación de Agua)
- 10** Park Entry Sign (Letrero de entrada al parque)
- 11** Drinking Fountain (Fuente de Agua)

Near Ardenwald Elementary (15-min walk)
 Shelter, tables, water fountain, and electrical outlets
 Fruit trees, rain garden with rock hopper bridge
 Paths for bikes, wheelchairs, and walking
 Water play table near shelter



FINAL SITE PLAN

BALFOUR PARK

MILWAUKIE, 3039 SE BALFOUR ST.

October, 2023/ Octubre 2023



izo

jla
Public Involvement

GREENWORKS™



CITY OF MILWAUKIE -
BALFOUR PARK
FINAL DRAFT - REV 2



COLOR KEY	POST & COMPONENTS	
	COBALT	TEAL

PLAYGROUND DESIGN

BALFOUR PARK

MILWAUKIE, 3039 SE BALFOUR ST.

October, 2023/ Octobre 2023



izo

jla
Public Involvement

GREENWORKS™



CITY OF MILWAUKIE -
BALFOUR PARK
FINAL DRAFT - REV 2



IHD 490 23R2 Color Option : A

COLOR KEY	POST & COMPONENTS
	COBALT
	TEAL

PLAYGROUND DESIGN

BALFOUR PARK

MILWAUKIE, 3039 SE BALFOUR ST.

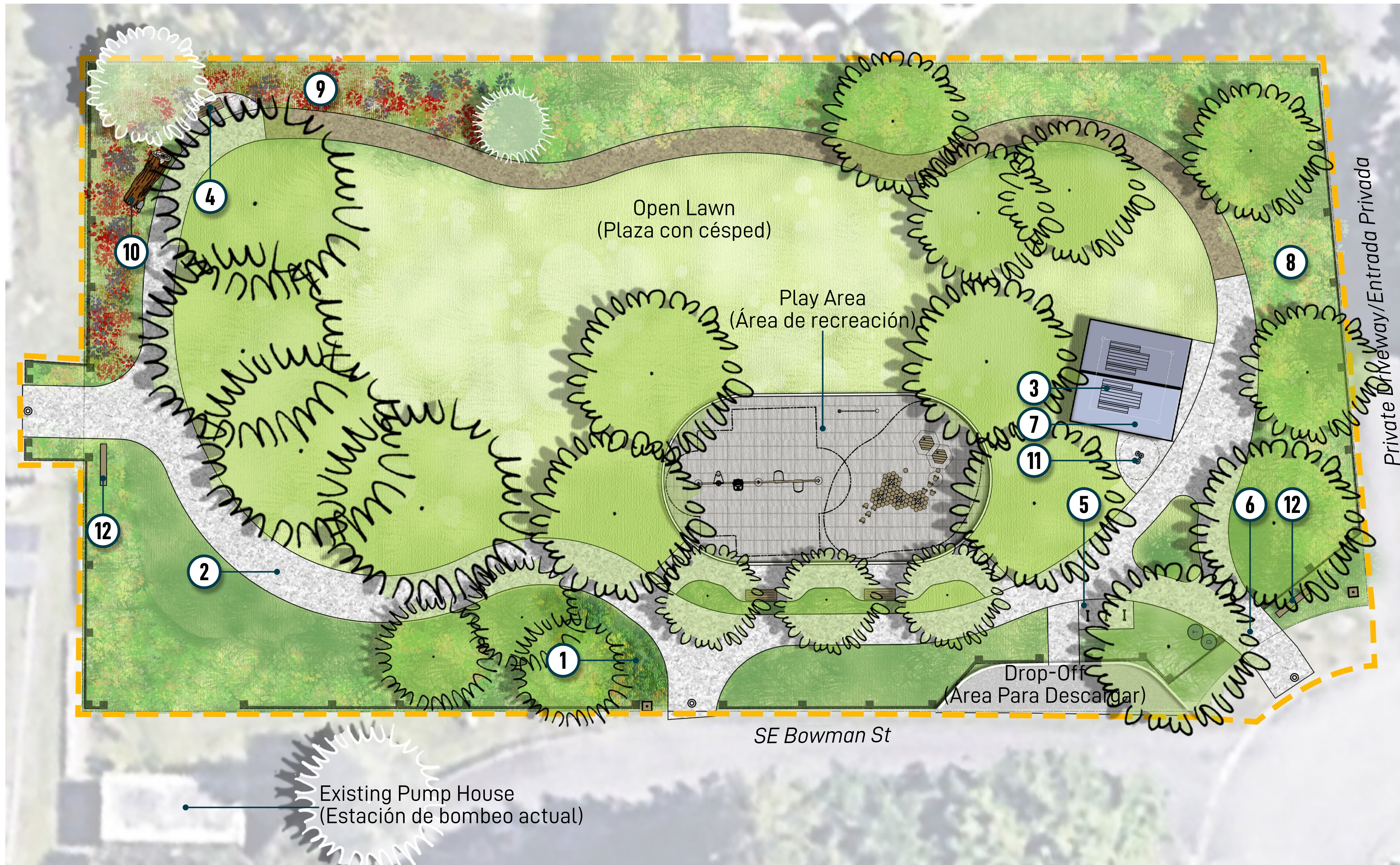
October, 2023/ Octobre 2023



izo

jla
Public Involvement

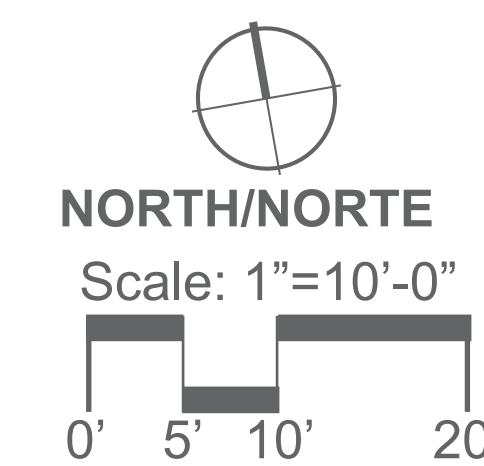
GREENWORKS™



LEGEND/LEYENDA

- 1** Stormwater Swale (Pantano de aguas de tormentas)
- 2** 6'-9' Wide Pathway (Camino 6' - 9' de ancho)
- 3** Picnic Table (2) (Mesa de pícnic -2)
- 4** Bench (Banco)
- 5** Bike Rack (Portabicicletas)
- 6** Main Park Entry (Entrada principal)
- 7** Picnic Shelter (Área cubierta para comer)
- 8** Screening Shrubs (Arbustos de ocultación)
- 9** Pollinator Garden (Jardín de Polinizadoras)
- 10** Log (Leño)
- 11** Drinking Fountain (Fuente de Agua)
- 12** Park Entry Sign (Letrero de entrada al parque)

Near Rowe Middle School (15-min walk when complete)
 Shelter with tables, drinking fountain, and electrical outlets
 Large lawn with path for bikes, strollers, and wheelchairs
 Trees and shrubs, butterfly garden, and rainwater garden for environment
 Drop off area for people in wheelchairs or trouble walking



FINAL SITE PLAN

BOWMAN-BRAE PARK

MILWAUKIE, 4225 SE BOWMAN ST.

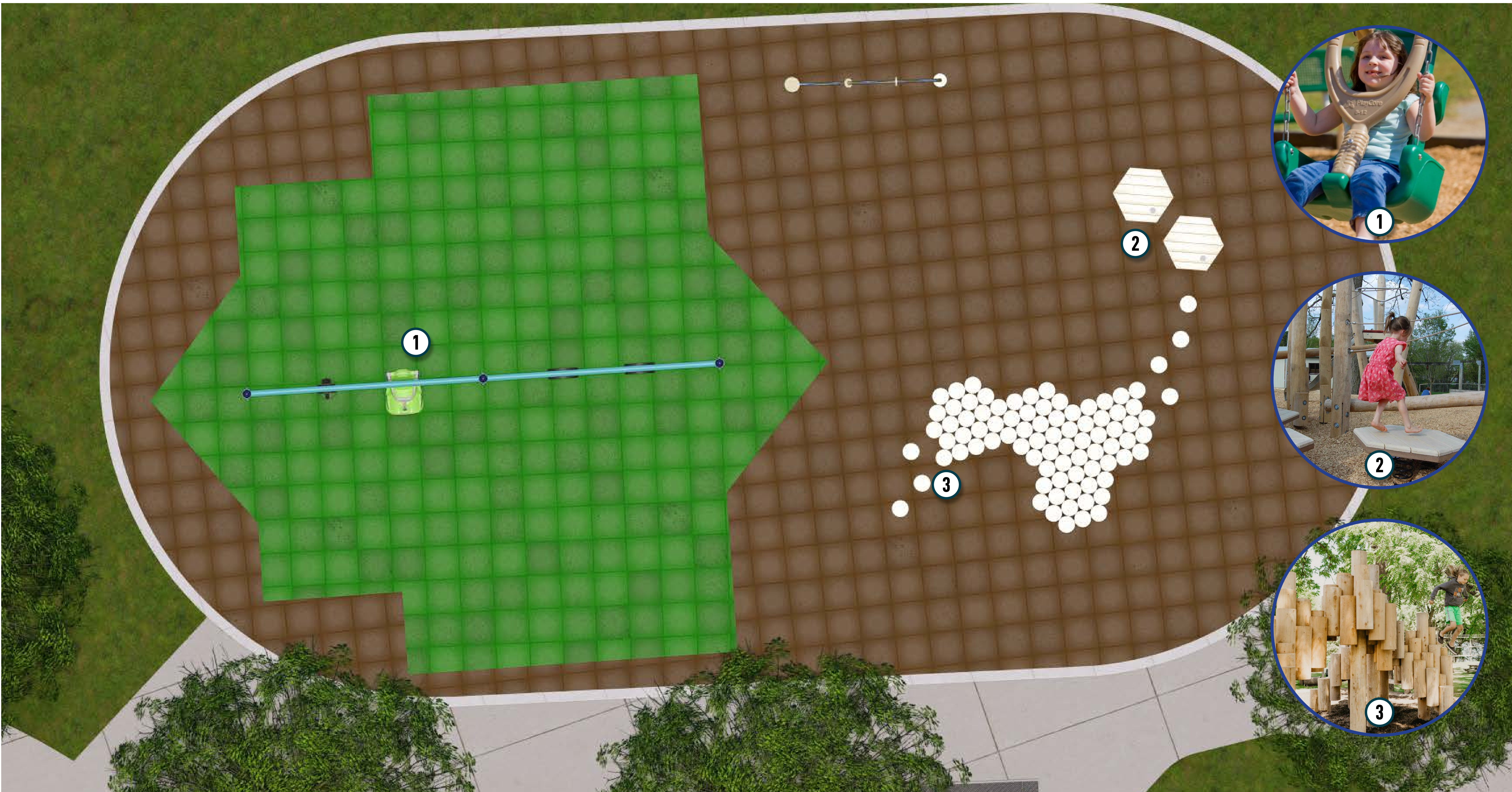
October, 2023/ Octubre 2023



izo

jla
Public Involvement

GREENWORKS™



CITY OF MILWAUKIE
BOWMAN-BRAE PARK
REVISION 1

IHD 489 23R1 Color Option :2



COLOR KEY	WOOD STAIN	POST & COMPONENTS		ROTO
	NATURAL WOOD	TEAL	COBALT	LIME

PLAYGROUND DESIGN

BOWMAN-BRAE PARK

MILWAUKIE, 4225 SE BOWMAN ST.

October, 2023/ Octobre 2023





CITY OF MILWAUKIE
BOWMAN-BRAE PARK
REVISION 1



IHD 489 23R1 Color Option :2

COLOR KEY	WOOD STAIN	POST & COMPONENTS		ROTO
	NATURAL WOOD	TEAL	COBALT	LIME

PLAYGROUND DESIGN

BOWMAN-BRAE PARK

MILWAUKIE, 4225 SE BOWMAN ST.

October, 2023/ Octobre 2023

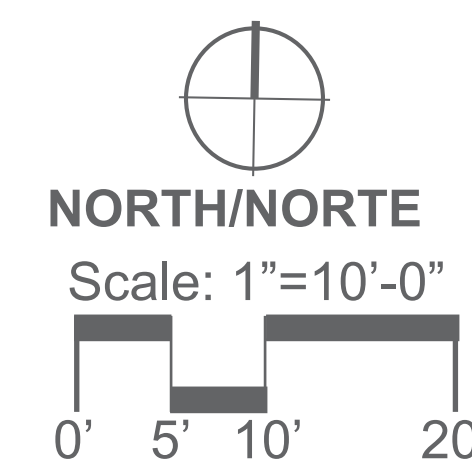




LEGEND/LEYENDA

- 1 Stormwater Swale (Pantano de aguas de tormentas)
- 2 Stage (Escenario)
- 3 Bench (Banco)
- 4 Bike Rack (Portabicicletas)
- 5 Riparian Area (Área Ribereño)
- 6 Native Planting (Planta Nativa)
- 7 Pond Platform (Plataforma del Estanque)
- 8 Rock Steppers (Adoquines)
- 9 Picnic Table (Mesa de pícnic)
- 10 Log (Leño)
- 11 Drinking Fountain (Fuente de Agua)
- 12 Soft Surface Trail (Sendero de Superficie Suave)
- 13 Park Entry Sign (Letrero de entrada al parque)

Outside Ledding Library Children's Room & Next to the Teen Room
 Nature play area & rock steppers to playground
 Amphitheater stage, pond platform, and paths for everyone
 Drinking fountain, tables, and outlets



FINAL SITE PLAN

SCOTT PARK

MILWAUKIE, 10660 SE 21ST AVE.

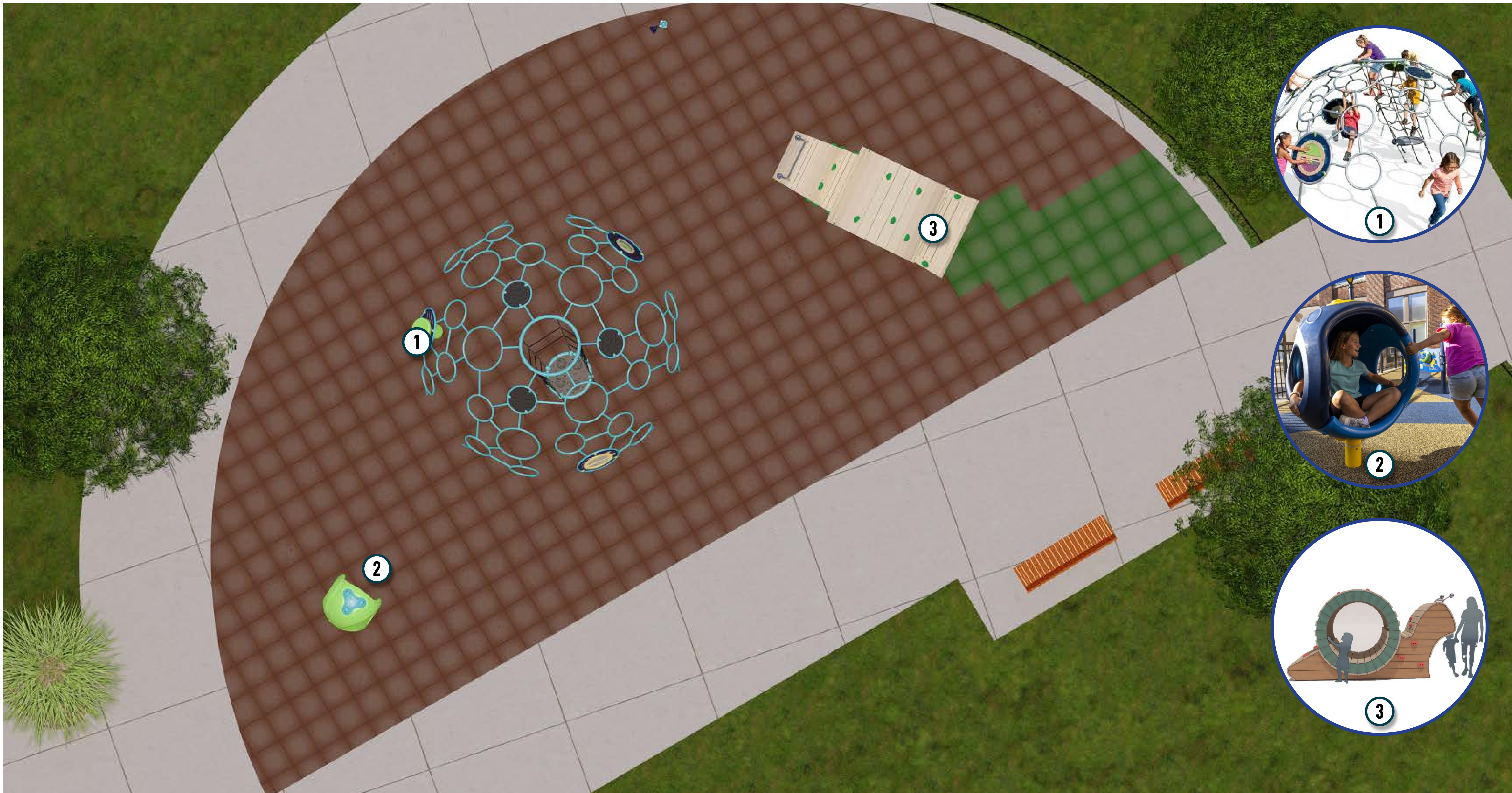
October, 2023/ Octubre 2023



izo

jla
Public Involvement

GREENWORKS™



CITY OF MILWAUKIE
SCOTT PARK
REVISION 2



IHD 491 23R2 Color Option : 2

COLOR KEY	WOOD STAIN	POST & COMPONENTS	ROTO	SHEET PLASTIC	ROPE
HUNTER GREEN	FERN GREEN	AVOCADO	TEAL	COBALT	BLACK
				COBALT-SAND	

PLAYGROUND DESIGN

SCOTT PARK

MILWAUKIE, 10660 SE 21ST AVE.

October, 2023/ Octobre 2023



izo

jla
Public Involvement

GREENWORKS™



CITY OF MILWAUKIE
SCOTT PARK
REVISION 2



IHD_491_23R2 Color Option : 2

COLOR KEY	WOOD STAIN	POST & COMPONENTS	ROTO	SHEET PLASTIC	ROPE
HUNTER GREEN	FERN GREEN	AVOCADO	TEAL	COBALT	LIME
				COBALT-SAND	BLACK

PLAYGROUND DESIGN

SCOTT PARK MILWAUKIE, 10660 SE 21ST AVE.

October, 2023/ Octobre 2023

