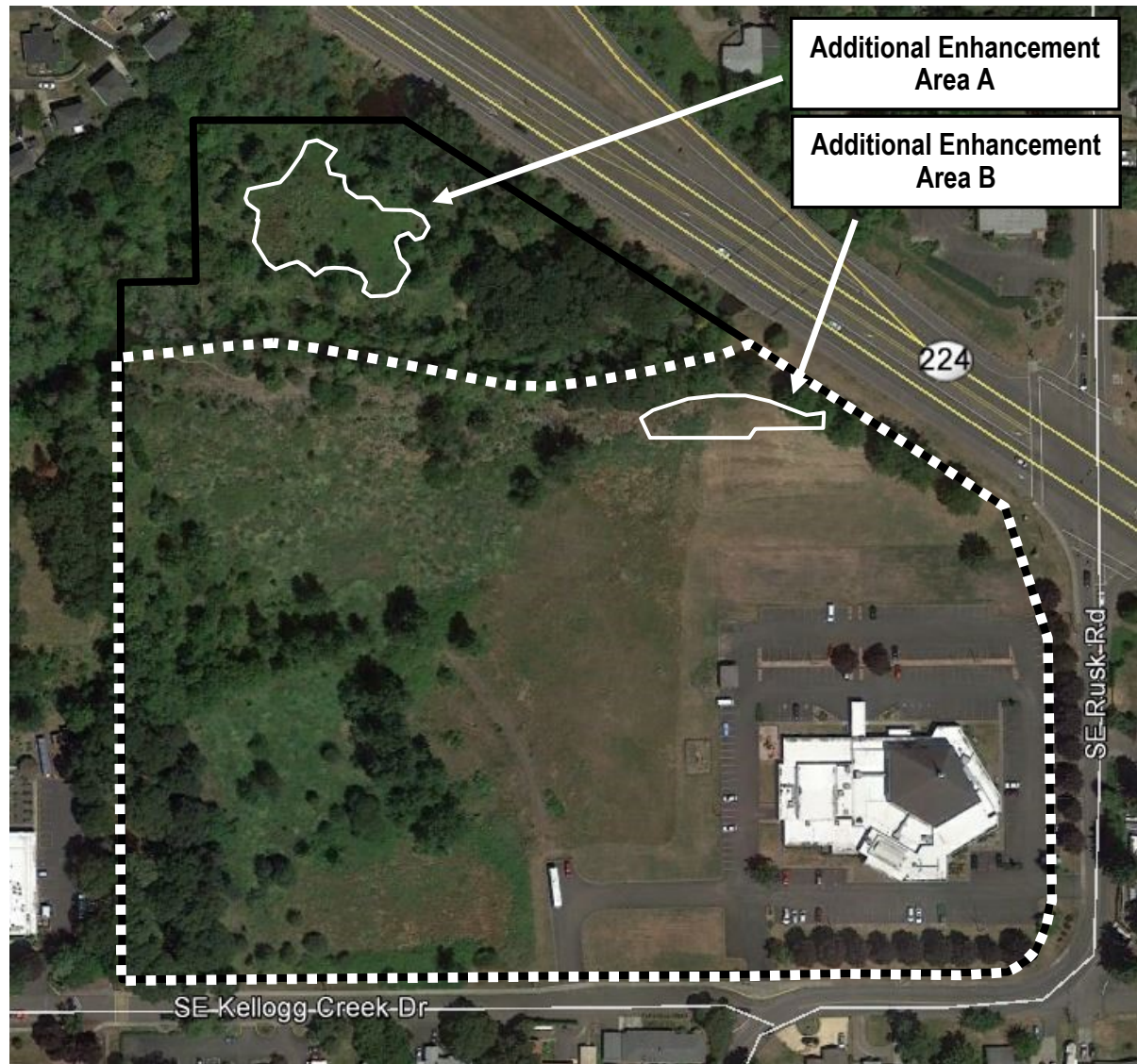


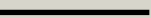

— Tax Lot Boundary  
- - - Study Area

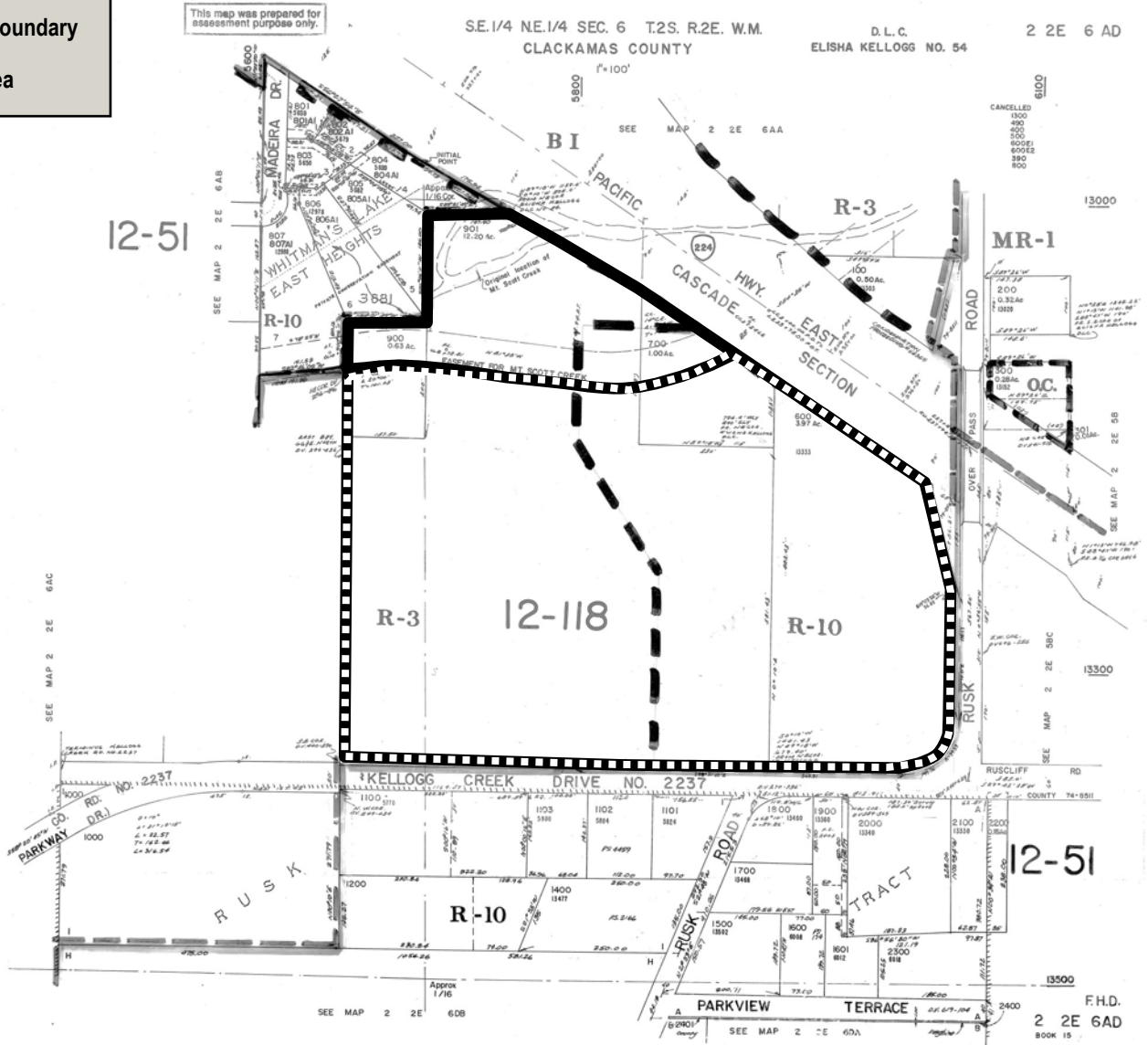


5975  
4/19/2017  
  
Pacific Habitat Services, Inc.  
9450 SW Commerce Circle, Suite 180  
Wilsonville, OR 97070

Additional Enhancement Areas A & B  
SE Kellogg Creek Drive - Milwaukie, Oregon  
Aerial Photo - Google Earth, 2016

FIGURE  
1A

 Tax Lot Boundary  
 Study Area



5975  
12/21/2016



Pacific Habitat Services, Inc.  
 9450 SW Commerce Circle, Suite 180  
 Wilsonville, OR 97070

Tax Lot Map  
 SE Kellogg Creek Drive - Milwaukie, Oregon  
 The Oregon Map (ormap.net)

FIGURE  
 2





**Mitigation Area A Planting List**

Species	Common Name	Quantity	Stock Type	Plant Size
<b>Trees</b>				
<i>Alnus rubra</i>	Red alder	232	Container or field-grown	½ in caliper
<i>Crataegus douglasii</i>	Douglas hawthorn	232	Container or field grown	½ in caliper
<i>Fraxinus latifolia</i>	Oregon ash	232	Container or field grown	½ in caliper
<i>Populus balsamifera</i>	Black cottonwood	232	Container or field-grown	½ in caliper
<i>Salix scouleriana</i>	Scouler's willow	232	Container or field-grown	½ in caliper
<b>Shrubs</b>				
<i>Cornus alba</i>	Red-osier dogwood	965	1 gal.	12 in
<i>Rosa pisocarpa</i>	Clustered rose	965	1 gal.	12 in
<i>Malus fusca</i>	Western crabapple	965	1 gal.	12 in
<i>Physocarpus capitatus</i>	Pacific ninebark	965	1 gal.	12 in
<i>Sambucus racemosa</i>	Red elderberry	965	1 gal.	12 in
<i>Symphoricarpos albus</i>	Snowberry	965	1 gal.	12 in
<b>Herbaceous seed mix</b>				
<i>Agrostis exarata</i>	Spike bentgrass	2.0 lbs/ac	Seed	n/a
<i>Bromus carinatus</i>	California brome	2.0 lbs/ac	Seed	n/a
<i>Deschampsia cespitosa</i>	Tufted hairgrass	3.0 lbs/ac	Seed	n/a
<i>Elymus glaucus</i>	Blue wildrye	3.0 lbs/ac	Seed	n/a
<i>Hordeum brachyantherum</i>	Meadow barley	2.0 lbs/ac	Seed	n/a
<i>Lupinus rivularis</i>	Riverbank lupine	3.5 lbs/ac	Seed	n/a

**Additional Enhancement Area A Planting List**

Species	Common Name	Quantity	Stock Type	Plant Size
<b>Trees</b>				
<i>Crataegus douglasii</i>	Douglas hawthorn	81	Container or field grown	½ in caliper
<i>Fraxinus latifolia</i>	Oregon ash	81	Container or field grown	½ in caliper
<i>Populus balsamifera</i>	Black cottonwood	81	Container or field-grown	½ in caliper
<b>Shrubs</b>				
<i>Rosa pisocarpa</i>	Clustered rose	243	1 gal.	12 in
<i>Malus fusca</i>	Western crabapple	243	1 gal.	12 in
<i>Physocarpus capitatus</i>	Pacific ninebark	243	1 gal.	12 in
<i>Sambucus racemosa</i>	Red elderberry	243	1 gal.	12 in
<i>Symphoricarpos albus</i>	Snowberry	243	1 gal.	12 in
<b>Herbaceous seed mix</b>				
<i>Agrostis exarata</i>	Spike bentgrass	2.0 lbs/ac	Seed	n/a
<i>Bromus carinatus</i>	California brome	2.0 lbs/ac	Seed	n/a
<i>Deschampsia cespitosa</i>	Tufted hairgrass	3.0 lbs/ac	Seed	n/a
<i>Elymus glaucus</i>	Blue wildrye	3.0 lbs/ac	Seed	n/a
<i>Hordeum brachyantherum</i>	Meadow barley	2.0 lbs/ac	Seed	n/a

**Additional Enhancement Area B Planting List**

Species	Common Name	Quantity	Stock Type	Plant Size
<b>Trees</b>				
<i>Acer macrophyllum</i>	Big-leaf maple	27	Container or field-grown	½ in caliper
<i>Populus balsamifera</i>	Black cottonwood	27	Container or field grown	½ in caliper
<i>Quercus garryana</i>	Oregon white oak	27	Container or field grown	½ in caliper
<b>Shrubs</b>				
<i>Mahonia aquifolium</i>	Tall Oregon grape	143	1 gal.	12 in
<i>Rosa gymnocarpa</i>	Baldhip rose	143	1 gal.	12 in
<i>Symphoricarpos albus</i>	Snowberry	143	1 gal.	12 in
<b>Herbaceous seed mix</b>				
<i>Achillea millefolium</i>	Yarrow	3.0 lbs/ac	Seed	n/a
<i>Bromus carinatus</i>	California brome	2.0 lbs/ac	Seed	n/a
<i>Elymus glaucus</i>	Blue wildrye	3.0 lbs/ac	Seed	n/a



Plans provided by DOWL.

Planting Lists  
 Kellogg Creek Subdivision - Milwaukie, Oregon

FIGURE  
**9A**

4-19-2017