

Underline/Strikeout Amendments Transportation System Plan (TSP)

Table 5-1 Pedestrian Master Plan Projects

Map ID ¹	Priority	Type	Project Name	Project Description ²	From	To	Cost (\$1,000s ³)
High Priority Projects							
N/A	High	P	Study of Pedestrian Crossings on Hwy 224	Examine alternatives for improving pedestrian crossings at five intersections along Hwy 224 (Harrison St, Monroe St, Oak St, 37 th Ave, Freeman Way)	Harrison St	Freeman Way	\$50
A	High	C	Intersection Improvements at Hwy 224 and Freeman Way	Improve pedestrian crossing.	Location-specific	Location-specific	\$20
B	High	C	Intersection Improvements at Hwy 224 and 37 th Ave	Improve pedestrian crossing.	Location-specific	Location-specific	\$20
C	High	C	Intersection Improvements at Hwy 224 and Oak St	Improve pedestrian crossing.	Location-specific	Location-specific	\$20
D	High	C	Intersection Improvements at Hwy 224 and Monroe St	Improve pedestrian crossing.	Location-specific	Location-specific	\$20
E	High	C	Intersection Improvements at Hwy 224 and Harrison St	Improve pedestrian crossing.	Location-specific	Location-specific	\$20

¹ See Figure 5-1.

² The projects in this table assume traditional sidewalks on both sides of the street. In some cases it may be appropriate to construct a nontraditional pedestrian facility on one side of the street. See Chapter 10 Street Design for more information on the City's approach to designing pedestrian facilities.

³ Project costs are order-of-magnitude estimates and are in 2012 dollars. Future costs may be more due to inflation. In the case of operational projects, estimated costs are for the entire 22-year planning period.

Map ID ¹	Priority	Type	Project Name	Project Description ²	From	To	Cost (\$1,000s ³)
L	High	C	17 th Ave Improvements	Fill in sidewalk gaps on both sides of street; fill in gaps in existing bicycle network with bike lanes; and/or provide multiuse path. Improve intersection safety at Milport Rd, McBrod Ave, Hwy 224, Lava Dr, and Hwy 99E.	Ochoco St	McLoughlin Blvd	\$1,000
O	High	C	Railroad Ave Capacity Improvements	Pedestrian aspect: Fill in sidewalk gaps on both sides of street or construct multiuse path on one side.	37 th Ave	Harmony Rd	\$1,800
P	High	C	Monroe St Neighborhood Greenway	Fill in sidewalk gaps on both sides of street.	42 nd Ave	City limit	\$1,800
U	High	C	43 rd Ave Sidewalks	Fill in sidewalk gaps on both sides of street.	Howe St/42 nd Ave	King Rd/43 rd Ave	\$600
V1	High	C	Stanley Ave Neighborhood Greenway (north)	Fill in sidewalk gaps on both sides of street.	Johnson Creek Blvd	King Rd	\$1,900
V2	High	C	Stanley Ave Neighborhood Greenway (south)	Fill in sidewalk gaps on both sides of street.	King Rd	Railroad Ave	\$2,800
W2	High	C	Linwood Ave Sidewalks (south)	Fill in sidewalk gaps on both sides of street (part of Linwood Ave road-widening project).	King Rd	Railroad Ave	\$2,150
Y	High	C	International Way Sidewalks	Fill in sidewalk gaps on both sides of street.	Criterion Ct	Lake Rd	\$840
Z	High	C	Harmony Rd Sidewalks	Fill in sidewalk gaps on both sides of street.	Linwood Ave	City limits	\$40
AL	High	C	River Rd Sidewalks	Fill in sidewalk gaps on both sides of street.	McLoughlin Blvd	City limits	\$690
AR	High	C	Kellogg Creek Dam Removal and Hwy 99E Underpass	Replace Hwy 99E bridge over Kellogg Creek, remove dam, restore habitat. Construct bike/ped undercrossing between downtown Milwaukie and Riverfront Park.	Location-specific	Location-specific	\$9,900
AU	High	C	Kellogg Creek Bike/Ped Bridge	Construct bike/ped overpass over Kellogg Creek in conjunction with light rail bridge.	Lake Rd	Kronberg Park	\$2,500
AV	High	C	Kronberg Park Trail	Construct multiuse path to connect bike/ped bridge to safe crossing of Hwy 99E.	Kellogg Creek Bridge	River Rd	\$300

Map ID ¹	Priority	Type	Project Name	Project Description ²	From	To	Cost (\$1,000s ³)
AW	High	C	Intersection Improvements at McLoughlin Blvd and 22 nd Ave	Improve safety of Trolley Trail crossing at 22 nd Ave.	Location-specific	Location-specific	\$200
AX	High	C	Improved Connection to Springwater Trail at 29 th Ave and Sherrett St	Pave the connection to Springwater Trail at 29 th Ave and Sherrett St. (TSAP)	Location-specific	Location-specific	\$20
AY	High	C	Improved Connection from Springwater Trail to Pendleton Site (Ramps)	Construct ramps to improve existing connection of Springwater Trail to Pendleton site at Clatsop St. (TSAP)	Location-specific	Location-specific	\$630
AY	High	C	Improved Connection from Springwater Trail to Pendleton Site (Widened Undercrossing)	Widen existing undercrossing to improve connection of Springwater Trail to Pendleton site at Clatsop St. (TSAP)	Location-specific	Location-specific	\$100
AZ	High	C	Improved Connection from Springwater Trail to Tacoma Station	Construct stairs to connect Springwater Trail to Tacoma station. (TSAP)	Location-specific	Location-specific	\$80
BL	High	C	Adams St Connector	Construct pedestrian- and bicycle-only facility on Adams St between 21 st Ave and Main St	21 st Ave	Main St	\$450
N/A	High	C	Intersection Curb Ramp Improvements	Install curb ramps at all intersections with sidewalks (approximately 700 intersections).	Citywide	Citywide	\$3,500
Medium Priority Projects							
F	Med	C	King Rd Blvd Treatments	Install street boulevard treatments: widen sidewalks and improve multiple crossings.	43 rd Ave	Linwood Ave	\$550
M	Med	C	McLoughlin Blvd Sidewalks	Fill in sidewalk gaps on both sides of street.	Washington St	Southern city limits	\$650
N	Med	C	Lake Rd Sidewalks	Fill in sidewalk gaps on both sides of street.	Where Else Ln	Hwy 224	\$2,200
Q	Med	C	Logus Rd Sidewalks	Fill in sidewalk gaps on both sides of street.	43 rd Ave	49 th Ave	\$850
T	Med	C	37 th Ave Sidewalks	Fill in sidewalk gaps on both sides of street.	Lake Rd	Harrison St	\$870
AE	Med	C	Brookside Dr Sidewalks	Fill in sidewalk gaps on both sides of street.	Johnson Creek Blvd	Regents Dr	\$20
AT	Med	C	Springwater Trail Completion	Contribute to regional project to complete Springwater Trail ("Sellwood Gap") along Ochoco St.	17 th Ave	19 th Ave	\$90

Map ID ¹	Priority	Type	Project Name	Project Description ²	From	To	Cost (\$1,000s ³)
BA	Med	C	Bicycle and Pedestrian Overpass over Railroad Ave	Establish a dedicated bicycle and pedestrian connection across Railroad Ave and the railroad tracks.	Railroad Ave	International Way	\$2,200
BB	Med	C	Bicycle/Pedestrian Improvements to Main St	Construct multiuse path or other improved bike/ped facilities on Main St to provide safer connection between downtown and Tacoma station. (TSAP)	Hanna Harvester Dr	Tacoma station	\$2,900
BC	Med	C	Bicycle/Pedestrian Connection from Eastern Neighborhoods to Tacoma Station Area	Establish bike/ped connection over existing railroad tracks and light rail to Tacoma station area. (TSAP)	Olsen St & Kelvin St	Mailwell Dr	\$4,000
BD	Med	C	Improved Connection from Springwater Trail to McLoughlin Blvd	Construct stairs or other facility to connect Springwater Trail to west side of McLoughlin Blvd. (TSAP)	Location-specific	Location-specific	\$500
BE	Med	C	Bicycle/Pedestrian Connection over Johnson Creek	Construct bike/ped bridge over Johnson Creek along Clatsop St at 23 rd Ave to connect Tacoma station area with adjacent neighborhood. (TSAP)	Location-specific	Location-specific	\$400
BF	Med	C	Improved Bicycle/Pedestrian Connections on West Side of Tacoma Station Area	Improve bike/ped connections to adjacent neighborhood to west of Tacoma station area at Ochoco St and Milport Rd. (TSAP)	Location-specific	Location-specific	\$500
N/A	Med	C	Downtown Streetscape Improvements	Install sidewalk bulbouts, lighting, and pedestrian amenities.	Downtown	Downtown	\$7,300 ⁴
N/A	Med	O	Pedestrian Walkway Amenities	Install amenities, such as benches, along key walking routes.	Citywide	Citywide	\$60
Low Priority Projects							
G	Low	C	Intersection Improvements at Olsen St and 42 nd Ave	Improve pedestrian crossing.	Location-specific	Location-specific	\$20
H	Low	C	Intersection Improvements at Railroad and 37 th Ave	Improve pedestrian crossing.	Location-specific	Location-specific	\$10

⁴ Estimated \$500,000 per block face.

Map ID ¹	Priority	Type	Project Name	Project Description ²	From	To	Cost (\$1,000s ³)
K	Low	C	Intersection Improvements at Stanley Ave and Logus Rd	Improve pedestrian crossing.	Location-specific	Location-specific	\$20
R	Low	C	Olsen St Sidewalks	Fill in sidewalk gaps on north side of street.	32 nd Ave	42 nd Ave	\$470
S	Low	C	Johnson Creek Blvd Sidewalks	Fill in sidewalk gaps on both sides of street.	Harney St	City limits	\$410
W1	Low	C	Linwood Ave Sidewalks (north)	Fill in sidewalk gaps on both sides of street (part of Linwood Ave road-widening project).	Johnson Creek Blvd	King Rd	1,050
X	Low	C	Hwy 224 Sidewalks	Fill in sidewalk gaps on both sides of street.	Oak St	37 th Ave	\$460
AA	Low	C	Home Ave Sidewalks	Fill in sidewalk gaps on both sides of street.	Railroad Ave	King Rd	\$830
AB	Low	C	Harvey St Sidewalks	Fill in sidewalk gaps on both sides of street.	32 nd Ave	42 nd Ave	\$590
AC	Low	C	Roswell St Sidewalks	Fill in sidewalk gaps on both sides of street.	32 nd Ave	36 th Ave	\$210
AD	Low	C	Mason Lane Sidewalks	Fill in sidewalk gaps on both sides of street.	42 nd Ave	Regents Dr	\$740
AF	Low	C	Regents Dr Sidewalks	Fill in sidewalk gaps on both sides of street.	Brookside Dr	Winsor Dr	\$540
AG	Low	C	Rusk Rd Sidewalks	Fill in sidewalk gaps on both sides of street.	Lake Rd	North Clackamas Park	\$730
AH	Low	C	Pedestrian Connection to North Clackamas Park	Create pedestrian connection between the school and the park.	Rowe Middle School	North Clackamas Park	\$1,400
AI	Low	C	Washington St Sidewalks	Fill in sidewalk gaps on both sides of street.	32 nd Ave	35 th Ave	\$130
AJ	Low	C	22 nd Ave Sidewalks	Fill in sidewalk gaps on both sides of street.	McLoughlin Blvd	Sparrow St	\$360
AK	Low	C	19 th Ave Sidewalks	Fill in sidewalk gaps on both sides of street.	Kellogg Creek Trail	Sparrow St	\$330
AM	Low	C	Oatfield Rd Sidewalks	Fill in sidewalk gaps on both sides of street.	Guilford Ct	City limits	\$150
AN	Low	C	49 th Ave Sidewalks	Fill in sidewalk gaps on both sides of street.	Logus Rd	King Rd	\$270
AO	Low	C	Franklin St Sidewalks	Install sidewalks on both sides of street to connect to Campbell Elementary School.	42 nd Ave	45 th Ave	\$220
AP	Low	C	Ochoco St Sidewalks	Construct sidewalks on Ochoco St to connect bus stops to Goodwill.	19 th Ave	McLoughlin Blvd	\$1,300
AQ	Low	C	Edison St Sidewalks	Fill in sidewalk gaps on both sides of street.	35 th Ave	37 th Ave	\$130

Map ID ¹	Priority	Type	Project Name	Project Description ²	From	To	Cost (\$1,000s ³)
AY	Low	C	Improved Connection from Springwater Trail to Pendleton Site (Tunnel)	Construct tunnel under Springwater Trail to improve connection to Pendleton site at Clatsop St. (TSAP)	Location-specific	Location-specific	\$1,200
BG	Low	C	Intersection Improvement at all Crossings of McLoughlin Blvd	Improve all existing crossings of McLoughlin Blvd (e.g., extended time for crossing, signage). (ODOT to do.)	Location-specific	Location-specific	—
BH	Low	C	Bike/Ped Path on Sparrow St	Establish a dedicated bicycle and pedestrian connection on Sparrow St, connecting River Rd to Trolley Trail	River Rd	Trolley Trail	\$350
BI	Low	C	Bike/Ped Overpass over McLoughlin Blvd at River Rd	Establish a dedicated bicycle and pedestrian connection across McLoughlin Blvd.	Kronberg Park	River Rd	\$2,500
BJ	Low	C	Crossing Improvements for McLoughlin Blvd at Ochoco St and Milport Rd	Construct improvements at Ochoco St and Milport Rd to improve bike/ped crossing of McLoughlin Blvd (per ODOT, this will require full intersection improvements). (TSAP)	Location-specific	Location-specific	\$8,320
BK	Low	C	Bicycle/Pedestrian Connection between McLoughlin Blvd and Stubb St	Establish bike/ped connection to McLoughlin Blvd sidewalk at west end of Stubb St. (TSAP)	Location-specific	Location-specific	\$20
N/A	Low	O	Pedestrian Walkway Signage	Provide maps and wayfinding signage on streets that identify ways to get around the city.	Citywide	Citywide	\$10
Priority to be Determined							
<u>BM</u>	-	<u>C</u>	<u>Harrison/32nd Ave Intersection</u>	<u>Open the currently closed pedestrian crosswalk on the west leg of the intersection</u>	<u>Location-specific</u>	<u>Location-specific</u>	-
<u>BN</u>	-	<u>C</u>	<u>Oak St/34th Ave Connection</u>	<u>Provide pedestrian/bicycle connection between Monroe St and 34th Ave (nearby residential neighborhood)</u>	<u>Location-specific</u>	<u>Location-specific</u>	-
<u>BO</u>	-	<u>C</u>	<u>Campbell St and Railroad Ave upgrades</u>	<u>Provide pedestrian/bicycle treatments on Campbell St and Railroad Ave between Monroe St and Harrison St</u>	<u>Location-specific</u>	<u>Location-specific</u>	-
<u>BP</u>	-	<u>C</u>	<u>Connection through Union Pacific Railroad property</u>	<u>Provide pedestrian/bicycle connection on Union Pacific Railroad land located in the triangle formed by the rail line, Railroad Ave and Monroe St</u>	<u>Location-specific</u>	<u>Location-specific</u>	-

Notes:

C = Capital Project
O = Operational Project
P = Policy Project

High = High priority
Med = Medium priority
Low = Low priority

TSAP = Tacoma Station Area Plan

Table 6-2 Bicycle Master Plan Projects

Map ID ⁵	Priority	Type	Project Name	Project Description	From	To	Cost (\$1,000s ⁶)
High Priority Projects							
E	High	C	Intersection Improvements at Linwood Ave and Monroe St	Improve safety of crossing at intersection.	Location-specific	Location-specific	\$10
G	High	C	Hwy 224 Crossing Improvements at Oak and Washington St	Improve intersection crossing safety for bicyclists at Washington St and Oak St.	Location-specific	Location-specific	\$10
J	High	C	Lake Rd Bike Lanes	Fill in gaps in existing bicycle network with bike lanes.	Main St	Guilford Dr	\$3,400
N	High	C	Railroad Ave Capacity Improvements	Bicycle aspect: Fill in gaps in existing bicycle network with bike lanes, cycle track, multiuse path, or other facilities.	37 th Ave	Linwood Ave	\$4,800
U1	High	C	Monroe St Neighborhood Greenway (downtown)	Designate as a "neighborhood greenway" and install traffic-calming improvements.	21 st Ave	Hwy 224	\$85
U2	High	C	Monroe St Neighborhood Greenway (central)	Designate as a "neighborhood greenway" and install traffic-calming improvements.	Hwy 224	42 nd Ave	\$80
U3	High	C	Monroe St Neighborhood Greenway (east)	Designate as a "neighborhood greenway" and install traffic-calming improvements.	42 nd Ave	Linwood Ave	\$165
U4	High	C	29 th /Harvey/40 th Neighborhood Greenway	Designate as a "neighborhood greenway" and install traffic-calming improvements.	Springwater Trail	Monroe St	\$220
U5	High	C	Stanley Ave Neighborhood Greenway (north)	Designate as a "neighborhood greenway" and install traffic-calming improvements.	Springwater Trail	King Rd	\$135
U6	High	C	Stanley Ave Neighborhood Greenway (south)	Designate as a "neighborhood greenway" and install traffic-calming improvements.	King Rd	Railroad Ave	195
Z	High	C	17 th Ave Improvements	Fill in sidewalk gaps on both sides of street, fill in gaps in existing bicycle network with bike lanes, and/or provide multiuse path. Improve intersection safety at Milport Rd, McBrod Ave, Hwy 224, Lava Dr, and Hwy 99E.	Ochoco St	McLoughlin Blvd	\$1,000

⁵ See Figure 6-3a.

⁶ Project costs are order-of-magnitude estimates and are in 2012 dollars. Future costs may be more due to inflation. In the case of operational projects, estimated costs are for the entire 22-year planning period.

Map ID ⁵	Priority	Type	Project Name	Project Description	From	To	Cost (\$1,000s ⁶)
AC	High	C	Kronberg Park Trail	Construct multiuse path to connect bike/ped bridge to safe crossing of Hwy 99E.	Kellogg Creek Bridge	River Rd	\$300
AD	High	C	Kellogg Creek Bike/Ped Bridge	Construct bike/ped overpass over Kellogg Creek in conjunction with light rail bridge.	Lake Rd	Kronberg Park	\$2,500
AE	High	C	Kellogg Creek Dam Removal and Hwy 99E Underpass	Replace Hwy 99E bridge over Kellogg Creek, remove dam, restore habitat. Construct bike/ped undercrossing between downtown Milwaukie and Riverfront Park.	Location-specific	Location-specific	\$9,900
AF	High	C	Intersection Improvements at McLoughlin Blvd and 22 nd Ave	Improve safety of Trolley Trail crossing at 22 nd Ave.	Location-specific	Location-specific	\$200
AG	High	C	Improved Connection to Springwater Trail at 29 th Ave and Sherrett St	Pave the connection to Springwater Trail at 29 th Ave and Sherrett St. (TSAP)	Location-specific	Location-specific	\$20
AH	High	C	Improved Connection from Springwater Trail to Pendleton Site (Ramps)	Construct ramps to improve existing connection of Springwater Trail to Pendleton site at Clatsop St. (TSAP)	Location-specific	Location-specific	\$630
AH	High	C	Improved Connection from Springwater Trail to Pendleton Site (Widened Undercrossing)	Widen existing undercrossing to improve connection of Springwater Trail to Pendleton site at Clatsop St. (TSAP)	Location-specific	Location-specific	\$100
N/A	High	O	Bike Lane Maintenance	Sweep bike lanes to remove debris.	Citywide	Citywide	\$1,200
N/A	High	O	Bicycle-friendly Street Grates	Install bicycle-friendly street grates.	Citywide	Citywide	\$60
Medium Priority Projects							
I	Med	C	Harrison St Bike Lanes	Fill in gaps in existing bicycle network with bike lanes (cost included with Harrison St road widening project).	Hwy 99E	21 st Ave	\$300
K	Med	C	Oatfield Rd Bike Lanes	Fill in gaps in existing bicycle network with bike lanes.	Guilford Ct	Lake Rd	\$380
U7	Med	C	19 th and Sparrow Neighborhood Greenway	Designate as a "neighborhood greenway" and install traffic-calming improvements. This would connect the south end of Kellogg Creek Trail to River Rd.	Eagle St	River Rd	\$800
V	Med	C	Bicycle and Pedestrian Overpass over Railroad Ave	Establish a dedicated bicycle and pedestrian connection across Railroad Ave and the railroad tracks.	Railroad Ave	International Way	\$2,200

Map ID ⁵	Priority	Type	Project Name	Project Description	From	To	Cost (\$1,000s ⁶)
AB	Med	C	Springwater Trail Completion	Contribute to regional project to complete Springwater Trail ("Sellwood Gap") along Ochoco St.	17 th Ave	19 th Ave	\$90
AI	Med	C	International Way Bicycle Facilities	Construct bike lanes or other bike facilities.	37 th Ave	Lake Rd	\$400
AJ	Med	C	Bicycle/Pedestrian Improvements to Main St	Construct multiuse path or other improved bike/ped facilities on Main St to provide safer connection between downtown and Tacoma station. (TSAP)	Hanna Harvester Dr	Tacoma station	\$2,900
AK	Med	C	Bicycle/Pedestrian Connection from Eastern Neighborhoods to Tacoma Station Area	Establish bike/ped connection over existing railroad tracks and light rail to Tacoma station area. (TSAP)	Olsen St & Kelvin St	Mailwell Dr	\$4,000
AL	Med	C	Improved Connection from Springwater Trail to McLoughlin Blvd	Construct stairs or other facility to connect Springwater Trail to west side of McLoughlin Blvd. (TSAP)	Location-specific	Location-specific	\$500
AM	Med	C	Bicycle/Pedestrian Connection over Johnson Creek	Construct bike/ped bridge over Johnson Creek along Clatsop St at 23 rd Ave to connect Tacoma station area with adjacent neighborhood. (TSAP)	Location-specific	Location-specific	\$400
AN	Med	C	Improved Bicycle/Pedestrian Connections on West Side of Tacoma Station Area	Improve bike/ped connections to adjacent neighborhood to west of Tacoma station area at Ochoco St and Milport Rd. (TSAP)	Location-specific	Location-specific	\$500
N/A	Med	O	Bicyclist Education	Promote bicycling through bike use and route selection education.	Citywide	Citywide	\$10
N/A	Med	O	Community Bicycle Rides	Support community bike rides to encourage bike use.	Citywide	Citywide	\$5
Low Priority Projects							
B	Low	C	Springwater Trail Intersection Improvements at 45 th Ave	Improve safety of crossing at intersection.	Location-specific	Location-specific	\$10
C	Low	C	Intersection Improvements at Johnson Creek Blvd and Linwood Ave	Improve safety of crossing at intersection.	Location-specific	Location-specific	\$10
D	Low	C	Intersection Improvements at Linwood Ave and King Rd	Improve safety of crossing at intersection.	Location-specific	Location-specific	\$10

Map ID ⁵	Priority	Type	Project Name	Project Description	From	To	Cost (\$1,000s ⁶)
H	Low	C	Intersection Improvements at International Way and Lake Rd	Improve safety of crossing at intersection.	Location-specific	Location-specific	\$10
L	Low	C	Harrison St Bike Lanes	Fill in gaps in existing bicycle network with bike lanes.	Hwy 224	42 nd Ave	\$10
M	Low	C	37 th Ave Bike Lanes	Fill in gaps in existing bicycle network with bike lanes.	Harrison St	Hwy 224	\$3,200
O	Low	C	43 rd Ave Bike Lanes	Fill in gaps in existing bicycle network with bike lanes.	King Rd	Filbert St	\$1,100
P	Low	C	Linwood Ave Bike Lanes (north)	Fill in gaps in existing bicycle network with bike lanes.	Queen Rd	Johnson Creek Blvd	\$1,900
Q	Low	C	Linwood Ave Bike Lanes (south)	Fill in gaps in existing bicycle network with bike lanes.	Juniper St	Harmony Rd	\$320
R	Low	C	Rusk Rd Bike Lanes	Fill in gaps in existing bicycle network with bike lanes.	Lake Rd	North Clackamas Park	\$1,000
X	Low	C	Kellogg Creek Trail Improvements	Resurface trail and provide wayfinding signage to/from trail.	Milwaukie Riverfront	Treatment Plant	\$680
AH	Low	C	Improved Connection from Springwater Trail to Pendleton Site (Tunnel)	Construct tunnel under Springwater Trail to improve connection to Pendleton site at Clatsop St. (TSAP)	Location-specific	Location-specific	\$1,200
AO	Low	C	Bike/Ped Path on Sparrow St	Establish a dedicated bicycle and pedestrian connection on Sparrow St, connecting River Rd to Trolley Trail	River Rd	Trolley Trail	\$350
AP	Low	C	Bike/Ped Overpass over McLoughlin Blvd at River Rd	Establish a dedicated bicycle and pedestrian connection across McLoughlin Blvd.	Kronberg Park	River Rd	\$2,500
AQ	Low	C	Crossing Improvements for McLoughlin Blvd at Ochoco St and Milport Rd	Construct improvements at Ochoco St and Milport Rd to improve bike/ped crossing of McLoughlin Blvd (per ODOT, this will require full intersection improvements). (TSAP)	Location-specific	Location-specific	\$8,320
AR	Low	C	Bicycle/Pedestrian Connection between McLoughlin Blvd and Stubb St	Establish bike/ped connection to McLoughlin Blvd sidewalk at west end of Stubb St. (TSAP)	Location-specific	Location-specific	\$20
N/A	Low	O	Milwaukie Bike Map	Produce a Milwaukie Bike Map.	Citywide	Citywide	\$60
N/A	Low	O	Police Enforcement on Drivers	Enforce laws related to bike lanes and bicycle safety.	Citywide	Citywide	\$10
N/A	Low	O	Bike Lane Striping	Restripe existing bike lanes and stripe bike lanes on streets where buses and bicyclists share the road.	Citywide	Citywide	\$20
N/A	Low	C	Springwater Trail Signage	Install wayfinding signage for Springwater Trail.	Citywide	Citywide	\$20

Map ID ⁵	Priority	Type	Project Name	Project Description	From	To	Cost (\$1,000s ⁶)
N/A	Low	O	North Clackamas Greenway Corridor Study	Study feasibility of corridor for multiuse path construction (possibly along Kellogg Creek).	Downtown	Clackamas Regional Center	\$50
Priority to be Determined							
<u>AS</u>	-	<u>C</u>	<u>Oak St/34th Ave Connection</u>	<u>Provide pedestrian/bicycle connection between Monroe St and 34th Ave (nearby residential neighborhood)</u>	<u>Location-specific</u>	<u>Location-specific</u>	-
<u>AT</u>	-	<u>C</u>	<u>Northern Bike Connection</u>	<u>Provide a bicycle connection through the Murphy site north to 29th Ave</u>	<u>Location-specific</u>	<u>Location-specific</u>	-
<u>AU</u>	-	<u>C</u>	<u>Crossing at Harrison St/31st Ave</u>	<u>Provide bicycle crossing across Harrison St between Campbell St and 31st Ave</u>	<u>Location-specific</u>	<u>Location-specific</u>	-
<u>AV</u>	-	<u>C</u>	<u>Campbell St and Railroad Ave upgrades</u>	<u>Provide pedestrian/bicycle treatments on Campbell St and Railroad Ave between Monroe St and Harrison St</u>	<u>Location-specific</u>	<u>Location-specific</u>	-
<u>AW</u>	-	<u>C</u>	<u>Connection through Union Pacific Railroad property</u>	<u>Provide pedestrian/bicycle connection on Union Pacific Railroad land located in the triangle formed by the rail line, Railroad Ave and Monroe St</u>	<u>Location-specific</u>	<u>Location-specific</u>	-

Notes:

C = Capital Project

O = Operational Project

P = Policy Project

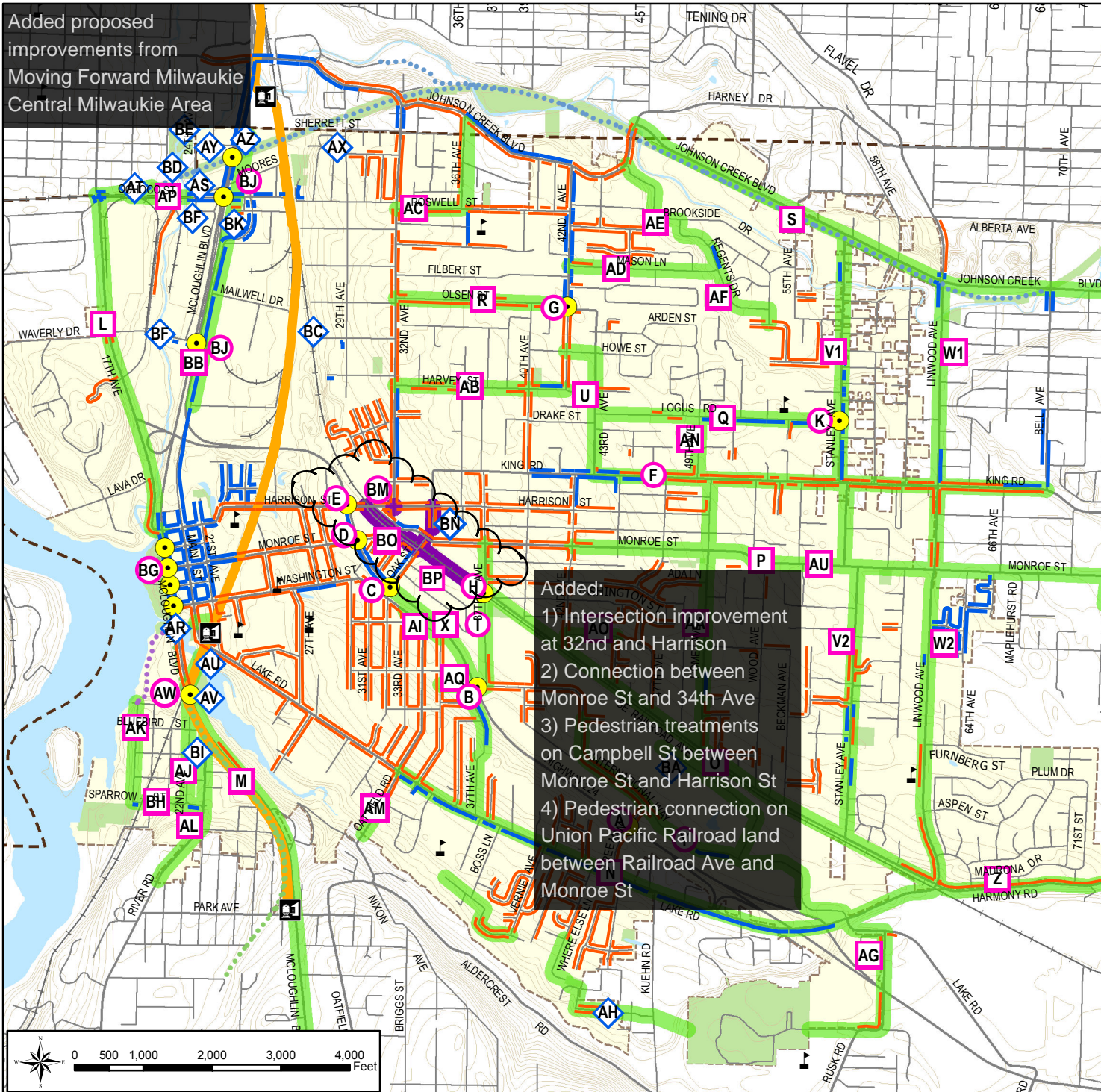
High = High priority

Med = Medium priority

Low = Low priority

TSAP = Tacoma Station Area Plan

Added proposed improvements from Moving Forward Milwaukie Central Milwaukie Area



Added:
 1) Intersection improvement at 32nd and Harrison
 2) Connection between Monroe St and 34th Ave
 3) Pedestrian treatments on Campbell St between Monroe St and Harrison St
 4) Pedestrian connection on Union Pacific Railroad land between Railroad Ave and Monroe St

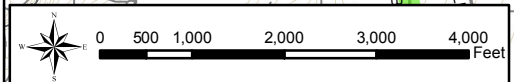


FIGURE 1-2

PEDESTRIAN MASTER PLAN

April 2015

LEGEND

Existing Sidewalks		Proposed Improvement	
	< 5 ft width		Pedestrian Intersection Safety Improvement
	5 ft - 10 ft width		Pedestrian Facilities
	Kellogg Creek Trail		Springwater Trail
	Trolley Trail		Central Milwaukie 2015 TSP Amendments
	Schools		County Line
	Major Roads		10' Contours
	Streets		Water
	Railroad		Parks
	City Limits		Light Rail Transit
	Light Rail Station		

PROPOSED PROJECTS

- Improve Intersection to Increase Pedestrian Safety**
- A** Freeman Way/HWY 224
 - B** 37th Ave/HWY 224
 - C** Oak St/HWY 224
 - D** Monroe St/HWY 224
 - E** Harrison St/HWY 224
 - F** King Rd improvements
 - G** Olsen St/42nd Ave
 - H** Railroad Ave/37th Ave
 - K** Stanley Ave/Logus Rd
 - AV** McLoughlin Blvd and 22nd Ave
 - BG** All McLoughlin crossings
 - BJ** McLoughlin and Ochoco/Milport
- Provide Pedestrian Facilities Where Not Currently Present**
 See Table 5-1 for project descriptions L-AG, AI-AQ, BB, BH
- Enhance Existing Pedestrian Connection**
- AI** Create ped connection from Rowe Middle School to North Clackamas Park
 - AR** Construct pedestrian underpass under HWY 99E at Kellogg Creek
 - AT** Complete Springwater Trail along Ochoco St
 - AU** Construct bike-ped overpass over Kellogg Creek
 - AV** Construct Kronberg Park Trail
 - AX** Pave connection to Springwater Trail at 29th Ave and Sherrett
 - AY** Improve connection from Springwater Corridor to Pendleton Site
 - AZ** Construct stairs to connect Springwater Corridor to LRT Station
 - BA** Establish bike-ped connection across Railroad Ave and tracks
 - BC** Establish bike-ped connection over railroad tracks and LRT
 - BD** Construct stairs from Springwater Corridor to McLoughlin Blvd
 - BE** Construct bike-ped bridge over Johnson Creek along Clatsop St at 23rd Ave to connect to LRT station
 - BF** Improve bike-ped connection to neighborhoods west of station
 - BI** Establish bike-ped connection over McLoughlin at River Rd
 - BK** Establish bike-ped connection to McLoughlin at Stubb St
- Provide Improved Pedestrian Facilities in Central Milwaukie**
 See Table 5-1 for project descriptions BM, BN, BO, and BP

Added proposed improvements from Moving Forward Milwaukie Central Milwaukie Area



Transportation System Plan

FIGURE 1-3

BICYCLE MASTER PLAN

April 2015

LEGEND

Existing Bicycle Facilities

- Shared Lane
- Bicycle Lane
- Kellogg Creek Trail
- Springwater Trail
- Trolley Trail

Proposed Improvements

- Bicycle Intersection Safety Improvement
- Bicycle Lanes
- Neighborhood Greenway
- Central Milwaukie 2015 TSP Amendments

- Schools
- Major Roads
- Streets
- Railroad
- County Line
- Water
- Parks
- City Limits
- Light Rail Station
- Light Rail Transit

PROPOSED PROJECTS

Improve Intersection to Increase Bicycle Safety

- A** Adams St/21st Ave/Railroad Crossing
- B** Johnson Creek Blvd/Springwater Trail
- C** Johnson Creek Blvd/Linwood Ave
- D** Linwood Ave/King Rd
- E** Linwood Ave/Monroe St
- F** Linwood Ave/Harmony Rd
- G** Washington St/Oak St/Hwy 224
- H** International Way/Lake Rd
- AF** McLoughlin and 22nd
- AP** McLoughlin/Ochoco/Milport

Provide Bicycle Lanes Where not Currently Present

See Table 6-2 for project descriptions B-R, AI, and AJ

Enhance Existing Bicycle Connection

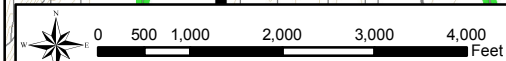
- U1** Install Neighborhood Greenway treatments at various locations
- V** Construct bicycle overpass from Railroad Ave to International Way
- W** Improve Springwater Trail paving
- X** Improve Kellogg Creek Trail
- Y** Install Trolley Trail signage
- Z** Fill in gaps in existing bike network with bike lanes or multiuse path. Improve intersection safety on 17th Ave at HWY 224 and at 99E.
- AB** Complete Springwater Trail along Ochoco St
- AC** Construct Kronberg Park Trail
- AD** Construct bike-ped overpass over Kellogg Creek
- AE** Construct pedestrian underpass under HWY 99E at Kellogg Creek
- AG** Pave connection to Springwater Trail at 29th Ave and Sherrett
- AH** Improve connection from Springwater Corridor to Pendleton Site
- AK** Establish bike-ped connection over railroad tracks and LRT
- AL** Construct stairs to connect Springwater Corridor to McLoughlin Blvd
- AM** Construct bike-ped bridge over Johnson Creek along Clatsop St at 23rd Ave to connect to LRT station
- AN** Improve bike-ped connection to neighborhoods west of station
- AO** Establish bike-ped path on Sparrow to connect River Rd to Trolley Trail
- AP** Establish bike-ped connection over McLoughlin at River Rd
- AR** Establish bike-ped connection to McLoughlin at Stubb St

Provide Improved Bicycle Facilities in Central Milwaukie

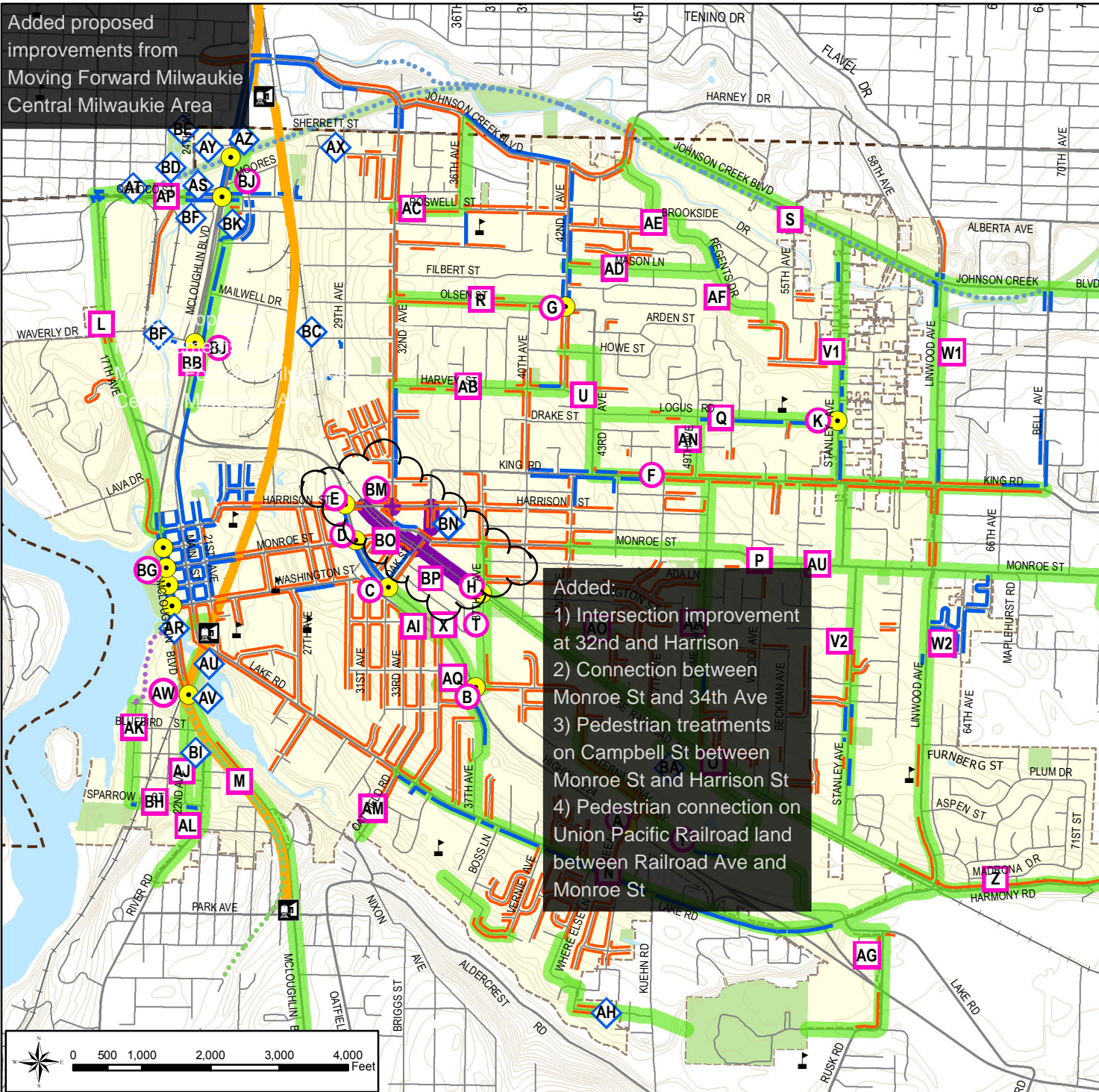
See Table 6-2 for project descriptions AS, AT, AU, AV, and AW

Added:

- 1) Bicycle Connection through Murphy site north to 29th Ave
- 2) Connection between Monroe St and 34th Ave
- 3) Bicycle treatments on Campbell St and Railroad Ave between Monroe St and Harrison St
- 4) Pedestrian connection on Union Pacific Railroad land between Railroad Ave and Monroe St
- 5) Bicycle crossing across Harrison St between Campbell St and 31st Ave



Added proposed improvements from Moving Forward Milwaukie Central Milwaukie Area



Added:
 1) Intersection improvement at 32nd and Harrison
 2) Connection between Monroe St and 34th Ave
 3) Pedestrian treatments on Campbell St between Monroe St and Harrison St
 4) Pedestrian connection on Union Pacific Railroad land between Railroad Ave and Monroe St



Transportation System Plan

FIGURE 5-1a

PEDESTRIAN MASTER PLAN

April 2015

LEGEND

Existing Sidewalks		Proposed Improvement	
	< 5 ft width		Pedestrian Intersection Safety Improvement
	5 ft - 10 ft width		Pedestrian Facilities
	Kellogg Creek Trail		Central Milwaukie 2015 TSP Amendments
	Springwater Trail		
	Trolley Trail		
	Schools		County Line
	Major Roads		City Limits
	Streets		Light Rail Transit
	Railroad		Water
			Parks
			Light Rail Station

PROPOSED PROJECTS

- Improve Intersection to Increase Pedestrian Safety**
- A** Freeman Way/HWY 224
 - B** 37th Ave/HWY 224
 - C** Oak St/HWY 224
 - D** Monroe St/HWY 224
 - E** Harrison St/HWY 224
 - F** King Rd improvements
 - G** Olsen St/42nd Ave
 - H** Railroad Ave/37th Ave
 - K** Stanley Ave/Logus Rd
 - AV** McLoughlin Blvd and 22nd Ave
 - BG** All McLoughlin crossings
 - BJ** McLoughlin and Ochoco/Milport
- Provide Pedestrian Facilities Where Not Currently Present**
 See Table 5-1 for project descriptions L-AG, AI-AQ, BB, BH
- Enhance Existing Pedestrian Connection**
- AI** Create ped connection from Rowe Middle School to North Clackamas Park
 - AR** Construct pedestrian underpass under HWY 99E at Kellogg Creek
 - AT** Complete Springwater Trail along Ochoco St
 - AU** Construct bike-ped overpass over Kellogg Creek
 - AV** Construct Kronberg Park Trail
 - AX** Pave connection to Springwater Trail at 29th Ave and Sherrett
 - AY** Improve connection from Springwater Corridor to Pendleton Site
 - AZ** Construct stairs to connect Springwater Corridor to LRT Station
 - BA** Establish bike-ped connection across Railroad Ave and tracks
 - BC** Establish bike-ped connection over railroad tracks and LRT
 - BD** Construct stairs from Springwater Corridor to McLoughlin Blvd
 - BE** Construct bike-ped bridge over Johnson Creek along Clatsop St at 23rd Ave to connect to LRT station
 - BF** Improve bike-ped connection to neighborhoods west of station
 - BI** Establish bike-ped connection over McLoughlin at River Rd
 - BK** Establish bike-ped connection to McLoughlin at Stubb St
- Provide Improved Pedestrian Facilities in Central Milwaukie**
 See Table 5-1 for project descriptions BM, BN, BO, and BP

Original Map Created by DKS Associates in 2007, Amended by the City of Milwaukie in 2013 and 2015

Added proposed improvements from Moving Forward Milwaukie Central Milwaukie Area



Transportation System Plan

FIGURE 6-8a

BICYCLE MASTER PLAN

April 2015

LEGEND

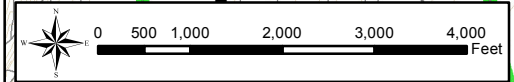
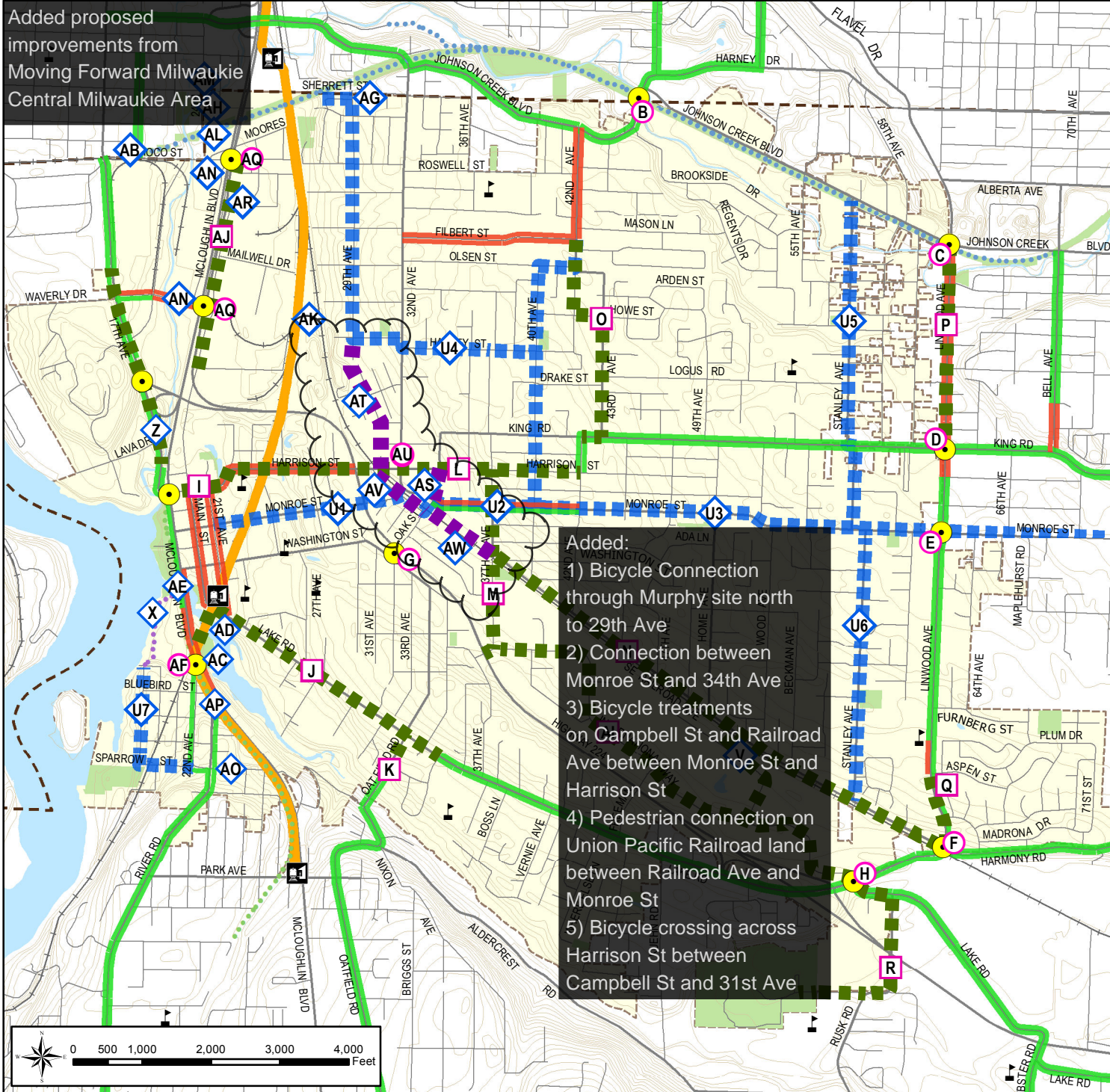
Existing Bicycle Facilities		Proposed Improvements	
	Shared Lane		Bicycle Intersection Safety Improvement
	Bicycle Lane		Bicycle Lanes
	Kellogg Creek Trail		Neighborhood Greenway
	Springwater Trail		Central Milwaukie 2015 TSP Amendments
	Trolley Trail		Schools
	Major Roads		Railroad
	Streets		Water
	Parks		Parks
	City Limits		Light Rail Station
	Light Rail Transit		

PROPOSED PROJECTS

- Improve Intersection to Increase Bicycle Safety**
- A** Adams St/21st Ave/Railroad Crossing
 - B** Johnson Creek Blvd/Springwater Trail
 - C** Johnson Creek Blvd/Linwood Ave
 - D** Linwood Ave/King Rd
 - E** Linwood Ave/Monroe St
 - F** Linwood Ave/Harmony Rd
 - G** Washington St/Oak St/Hwy 224
 - H** International Way/Lake Rd
 - AF** McLoughlin and 22nd
 - AP** McLoughlin/Ochoco/Milport
- Provide Bicycle Lanes Where not Currently Present**
See Table 6-2 for project descriptions B-R, AI, and AJ
- Enhance Existing Bicycle Connection**
- U1** Install Neighborhood Greenway treatments at various locations
 - V** Construct bicycle overpass from Railroad Ave to International Way
 - W** Improve Springwater Trail paving
 - X** Improve Kellogg Creek Trail
 - Y** Install Trolley Trail signage
 - Z** Fill in gaps in existing bike network with bike lanes or multiuse path. Improve intersection safety on 17th Ave at Hwy 224 and at 99E.
 - AB** Complete Springwater Trail along Ochoco St
 - AC** Construct Kronberg Park Trail
 - AD** Construct bike-ped overpass over Kellogg Creek
 - AE** Construct pedestrian underpass under Hwy 99E at Kellogg Creek
 - AG** Pave connection to Springwater Trail at 29th Ave and Sherrett
 - AH** Improve connection from Springwater Corridor to Pendleton Site
 - AK** Establish bike-ped connection over railroad tracks and LRT
 - AL** Construct stairs to connect Springwater Corridor to McLoughlin Blvd
 - AM** Construct bike-ped bridge over Johnson Creek along Clatsop St at 23rd Ave to connect to LRT station
 - AN** Improve bike-ped connection to neighborhoods west of station
 - AO** Establish bike-ped path on Sparrow to connect River Rd to Trolley Trail
 - AP** Establish bike-ped connection over McLoughlin at River Rd
 - AR** Establish bike-ped connection to McLoughlin at Stubb St
- Provide Improved Bicycle Facilities in Central Milwaukie**
See Table 6-2 for project descriptions AS, AT, AU, AV, and AW

Added:

- 1) Bicycle Connection through Murphy site north to 29th Ave
- 2) Connection between Monroe St and 34th Ave
- 3) Bicycle treatments on Campbell St and Railroad Ave between Monroe St and Harrison St
- 4) Pedestrian connection on Union Pacific Railroad land between Railroad Ave and Monroe St
- 5) Bicycle crossing across Harrison St between Campbell St and 31st Ave



Original Map Created by DKS Associates in 2007, Amended by the City of Milwaukie in 2013 and 2015