

WHAT IS A COMPREHENSIVE PLAN?

VISION & ACTION PLAN

A HIGH-LEVEL, 20-YEAR
VISION FOR THE MILWAUKIE
OF 2040

STATE & REGIONAL GOALS/RULES

EXAMPLES:

- STATEWIDE PLANNING GOALS
- METRO'S REGIONAL FRAMEWORK
PLAN

COMPREHENSIVE PLAN

- 1 GOALS & POLICIES *PUBLIC HEARINGS STARTING IN JANUARY 2020*
- 2 LAND USE MAP *COMING UP NEXT (2020-2021)*

ZONING CODE & MAP

AN UPDATE WILL HAPPEN
WITH THE LAND USE MAP
UPDATE IN 2020-2021

PROGRAMS & PROJECTS

EXAMPLES:

- HOUSING AFFORDABILITY STRATEGY
- URBAN RENEWAL PROGRAM

WHAT IS A COMPREHENSIVE PLAN?

HOW IS THE COMPREHENSIVE PLAN RELATED TO THE VISION?

The Vision's five "superactions" served as a framework for the Comprehensive Plan Goals and Policies. See how below:

VISION SUPERACTIONS



COMPREHENSIVE PLAN SECTIONS

Cultivate a Sense of Community, Culture, and Belonging by Encouraging Public Involvement, Diversity, Equity, and Inclusion.

Make Milwaukie a Model of Resiliency, Environmental Stewardship and Disaster-Preparedness

Create Complete Neighborhoods that Offer a Range of Housing Types, Amenities and Enhance Local Identity and Character

Support Local Businesses and Entrepreneurship through Training, Programs and Partnerships

Continually Improve our Transportation System so that it Provides Safety and Connectivity for All Users

Fostering Community and Culture

- 1 Community Engagement
- 2 History, Arts and Culture

Environmental Stewardship and Community Resiliency

- 3 Natural Resources and Environmental Quality
- 4 Willamette Greenway
- 5 Natural Hazards
- 6 Climate Change and Energy

Creating Complete Neighborhoods

- 7 Housing
- 8 Land Use and Urban Design
- 9 Parks and Recreation
- 10 Public Facilities and Services

Supporting Economic Development and Growth

- 11 Economic Development
- 12 Urban Growth Management

Transportation

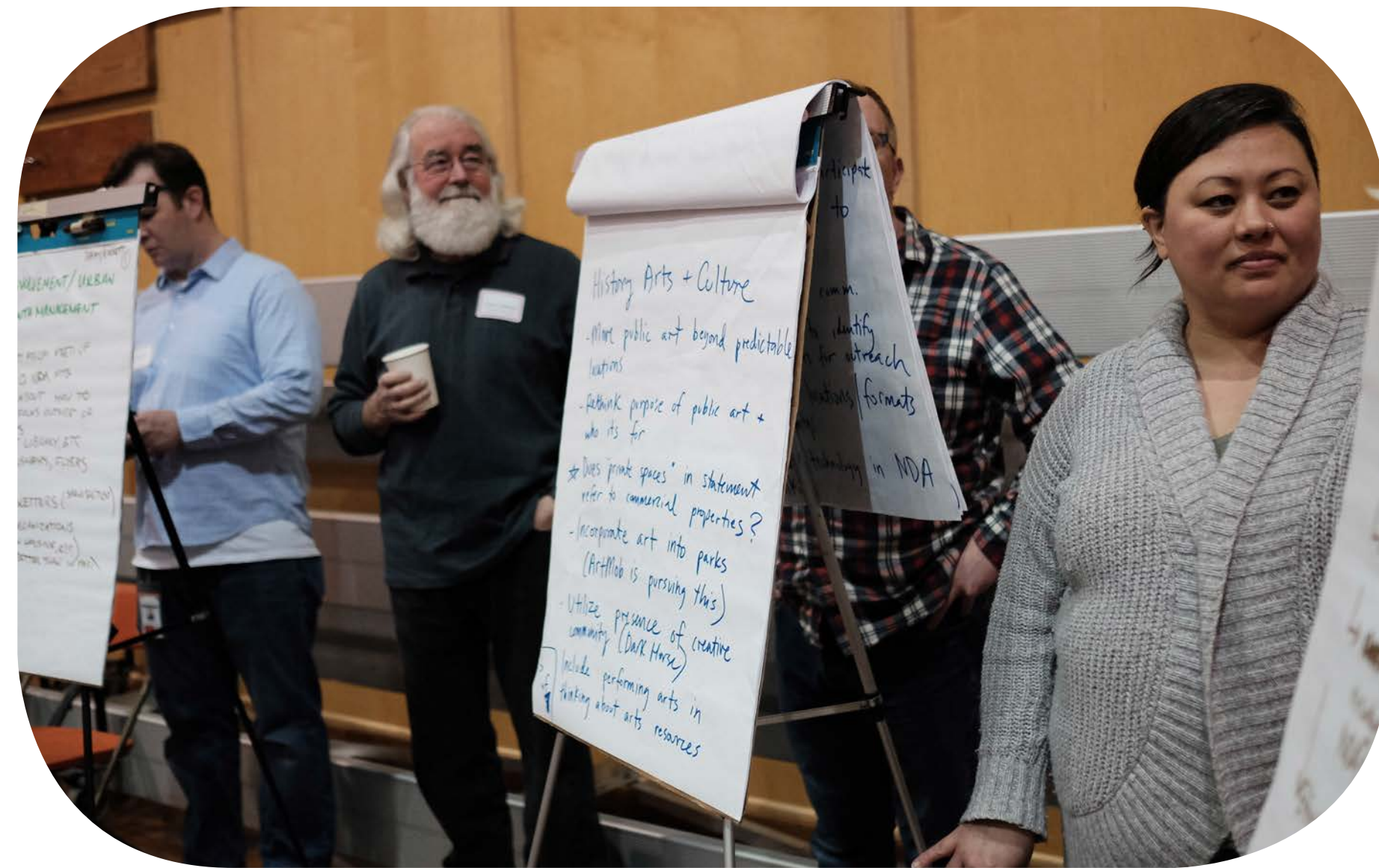
(Existing; will be updated following the Transportation Systems Plan update)

Want a refresher on the Milwaukie Vision? Visit: www.milwaukieoregon.gov/planning/vision

WHAT HAS HAPPENED...SO FAR?

EXTENSIVE PUBLIC OUTREACH

SINCE
NOVEMBER
2017...



24
COMPREHENSIVE PLAN ADVISORY
COMMITTEE (CPAC) MEETINGS
(CPAC IS A 15-MEMBER COMMUNITY
ADVISORY GROUP)

SHARE YOUR THOUGHTS: Parks, Recreation and the Willamette Greenway:

- Where do you or your family recreate in the City of Milwaukie? Select all that apply.
 - At a city park
 - At a local North Clackamas School District school outside of school hours
 - At a local private or charter school outside of school hours
 - At an indoor community or recreation center (e.g. the Milwaukie Center, the Wichita Center)
 - Somewhere else:
 - I do not recreate in Milwaukie
- What types of amenities do you feel are missing at Milwaukie's parks? Please rank the top three amenities you like to see increased.
 - Play equipment for young children (6 years and younger)
 - Play equipment for children between 6 and 13

4 ONLINE OPEN HOUSES/SURVEYS
THAT CORRESPONDED WITH THE TOWN HALLS/
OPEN HOUSES
(ALL WERE TRANSLATED INTO SPANISH)



CONTINUAL IN-PERSON COMMUNITY
OUTREACH REACHING 300+ PEOPLE BY:

- ATTENDING NEIGHBORHOOD DISTRICT ASSOCIATION (NDA) MEETINGS
- CANVASSING AT CONCERTS IN THE PARK
- CANVASSING AT NDA PICNICS



3 TOWN HALLS WITH 100+ PARTICIPANTS EACH
2 OPEN HOUSES WITH 60+ PARTICIPANTS
(ALL HAVE INCLUDED ON-SITE SPANISH TRANSLATION)



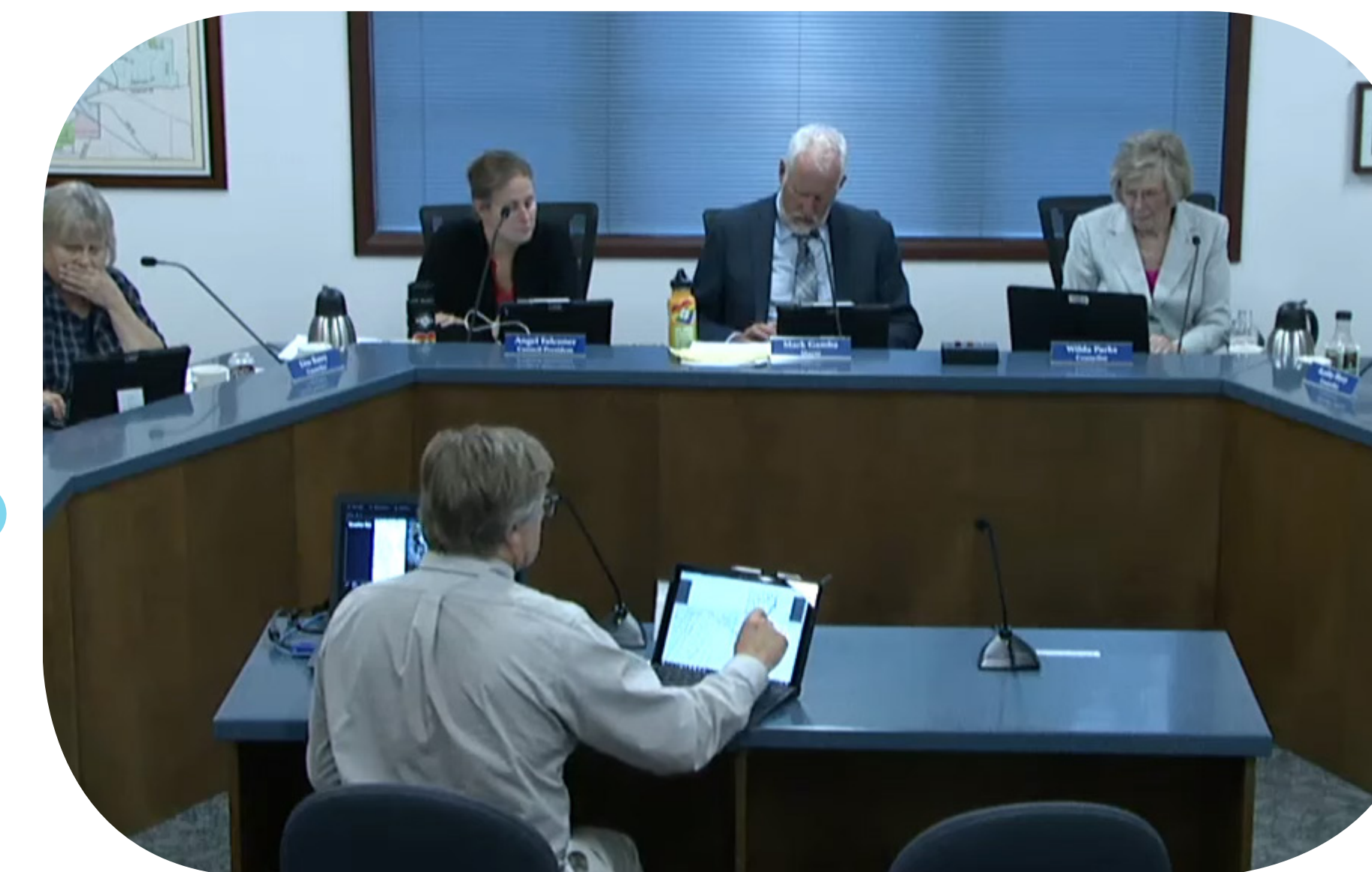
3 SPANISH-LANGUAGE FOCUS GROUPS WITH
50+ PARTICIPANTS TOTAL



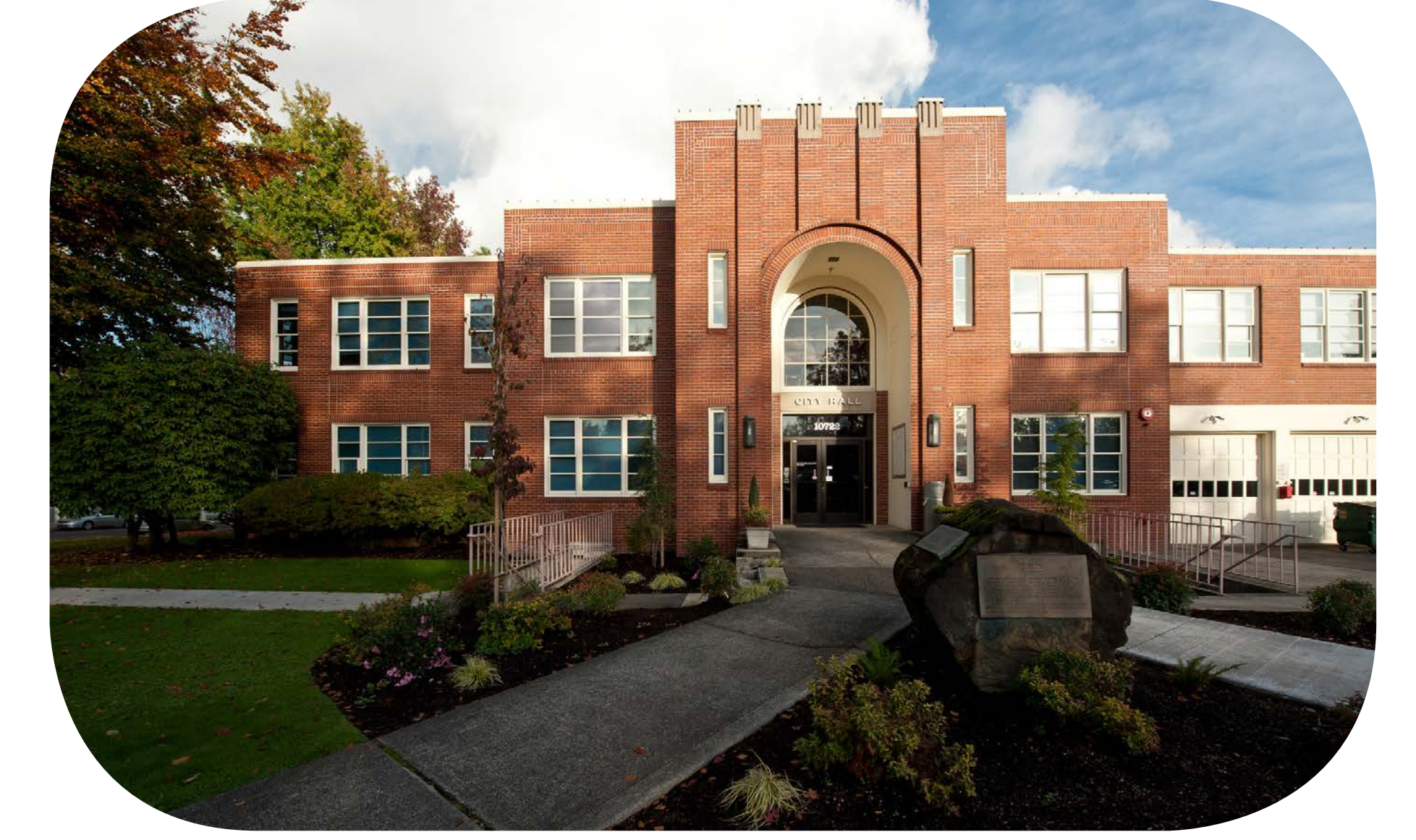
Comprehensive Plan Update and Community Open House Set for Oct. 23

CONTINUAL MAIL, ONLINE, & EMAIL
OUTREACH THROUGH:

- ARTICLES/EVENT NOTICES IN THE MILWAUKIE PILOT
- EVENT NOTICES/UPDATES ON THE CITY'S SOCIAL MEDIA PAGES
- EVENT NOTICES VIA THE 500+ COMPREHENSIVE PLAN UPDATE EMAIL LIST



MULTIPLE WORKSESSIONS WITH THE
PLANNING COMMISSION AND CITY
COUNCIL - ALL WERE OPEN TO THE PUBLIC
AND VIDEO RECORDED



JAN-MARCH 2020 PUBLIC HEARINGS ON
THE PROPOSED COMP PLAN POLICIES

UP NEXT...

TO NOVEMBER 2019

WHAT IS HAPPENING NOW?

WHAT'S ADDRESSED IN THE DRAFT COMPREHENSIVE PLAN POLICIES?

Fostering Community and Culture



Section 1: Community Engagement

EXAMPLES OF TOPICS COVERED:

- Community participation
- Inclusion and diversity
- Transparency
- Neighborhood District Associations (NDAs)

SAMPLE DRAFT POLICY:

"Build engagement across Milwaukie's diverse communities by notifying and facilitating participation in all land use and Comprehensive Plan related activities."



Section 2: History, Arts and Culture

EXAMPLES OF TOPICS COVERED:

- History and heritage
- Community art
- Creative spaces

SAMPLE DRAFT POLICY:

"Provide opportunities and programs for art and cultural events to be located throughout Milwaukie."



WHAT IS HAPPENING NOW?

WHAT'S ADDRESSED IN THE DRAFT COMPREHENSIVE PLAN POLICIES?

Environmental Stewardship and Community Resiliency



Section 3: Natural Resources and Environmental Quality

EXAMPLES OF TOPICS COVERED:

- Natural resource protection
- Water quality
- Air quality
- Fish and wildlife habitat

SAMPLE DRAFT POLICY:

"Promote public education and encourage collaboration with community partners and organizations when developing strategies to protect air and water quality and other natural resources."

Section 4: Willamette Greenway

EXAMPLES OF TOPICS COVERED:

- Greenway boundaries
- Land use review process
- Natural resource protection
- Views

SAMPLE DRAFT POLICY:

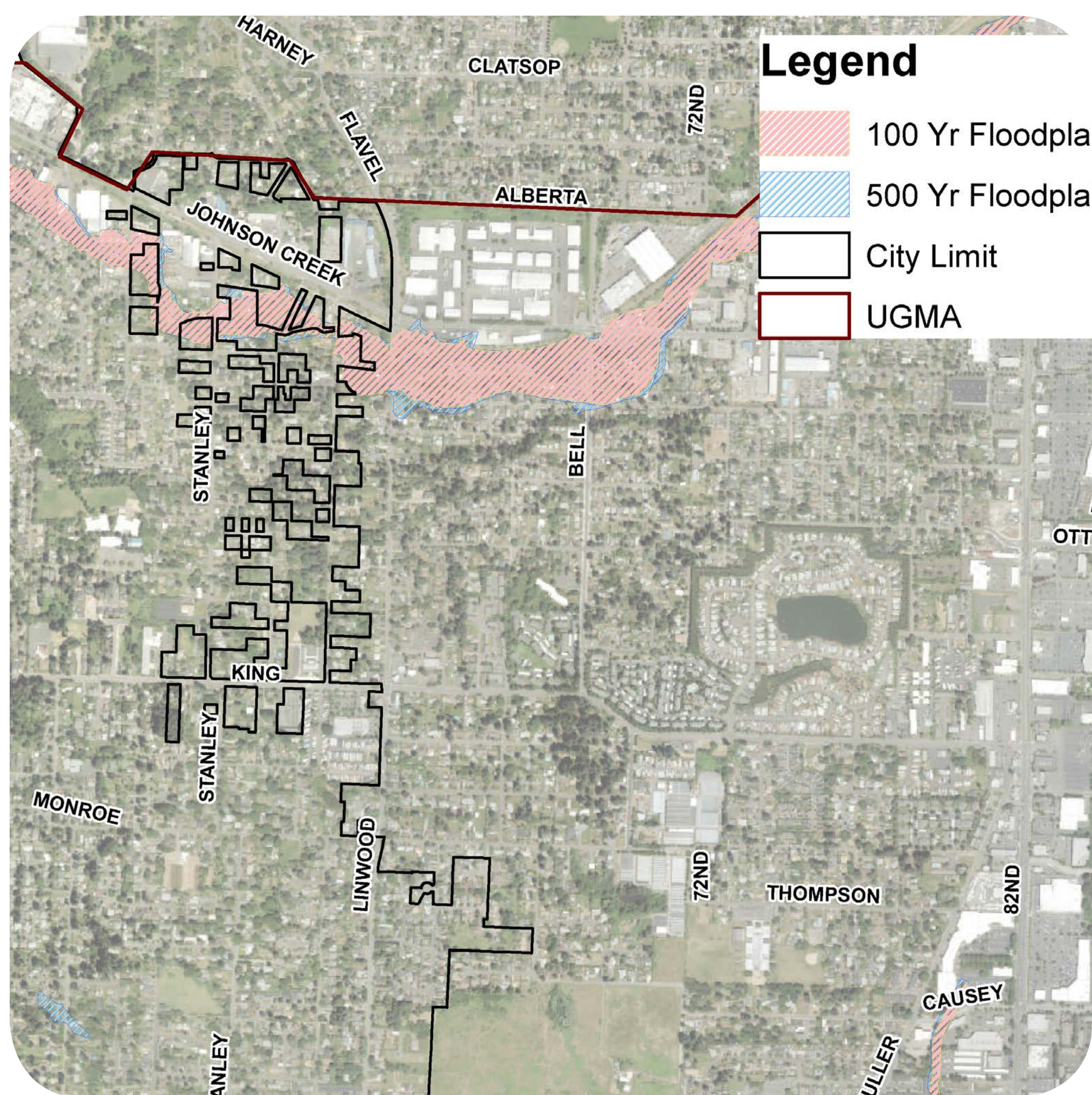
"Encourage new public access and views within the greenway and to the Willamette River, through dedications, easements, acquisitions or other means."



WHAT IS HAPPENING NOW?

WHAT'S ADDRESSED IN THE DRAFT COMPREHENSIVE PLAN POLICIES?

Environmental Stewardship and Community Resiliency



Section 5: Natural Hazards

EXAMPLES OF TOPICS COVERED:

- Floodplain management
- Education and partnerships
- Adaptation and mitigation

SAMPLE DRAFT POLICY:

"Promote the retrofitting of buildings for better natural disaster resiliency through education and potential incentives for residential and commercial property owners."



Section 6: Climate Change and Energy

EXAMPLES OF TOPICS COVERED:

- Energy efficiency
- Climate change adaptation
- Infrastructure resiliency

SAMPLE DRAFT POLICY:

"Be an advocate and early adopter of emerging technologies and strive to be a model for how small cities can adapt to climate change."



WHAT IS HAPPENING NOW?

WHAT'S ADDRESSED IN THE DRAFT COMPREHENSIVE PLAN POLICIES?

Creating Complete Neighborhoods



Section 7: Housing

EXAMPLES OF TOPICS COVERED:

- Housing affordability
- Housing types
- Equity and displacement concerns

SAMPLE DRAFT POLICY:

"Provide the opportunity for a wider range of rental and ownership housing choices in Milwaukie, including additional middle housing types in low and medium density zones."



Section 8: Land Use and Urban Design

EXAMPLES OF TOPICS COVERED:

- Land use districts
- Design review process
- Improving livability

SAMPLE DRAFT POLICY:

"Ensure that a clear and objective process is available for all housing types that meet design standards, provide adequate open space, and fit into the community, while offering an alternative discretionary path for projects that cannot meet these standard."



WHAT IS HAPPENING NOW?

WHAT'S ADDRESSED IN THE DRAFT COMPREHENSIVE PLAN POLICIES?

Creating Complete Neighborhoods



Section 9: Parks and Recreation

EXAMPLES OF TOPICS COVERED:

- Open space
- Active recreation
- Connectivity
- Development and maintenance

SAMPLE DRAFT POLICY:

"Establish a Parks, Recreation, and Open Space zone within the Municipal Zoning Code."



Section 10: Public Facilities and Services

EXAMPLES OF TOPICS COVERED:

- Water supply
- Wastewater treatment
- Stormwater regulations
- Public safety

SAMPLE DRAFT POLICY:

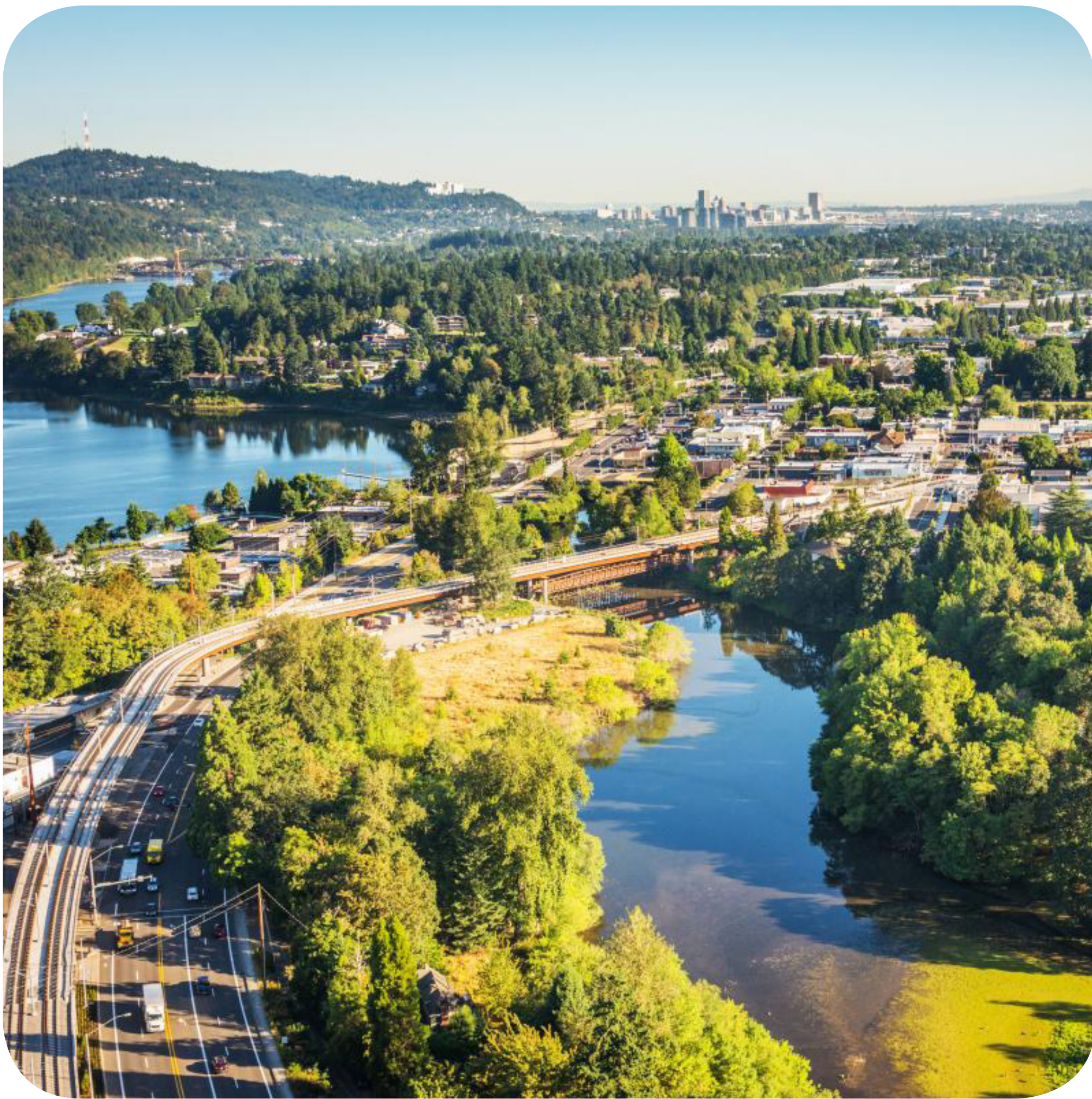
"Provide a self-sufficient and resilient water system that meets the demands of current and future City residents."



WHAT IS HAPPENING NOW?

WHAT'S ADDRESSED IN THE DRAFT COMPREHENSIVE PLAN POLICIES?

Supporting Economic Development and Growth



Section 11: Economic Development

EXAMPLES OF TOPICS COVERED:

- Land supply
- Workforce and training
- Jobs-housing balance

SAMPLE DRAFT POLICY:

“Develop strategies to help stabilize existing businesses and mitigate displacement in areas experiencing increased investment and redevelopment”



Section 12: Urban Growth Management

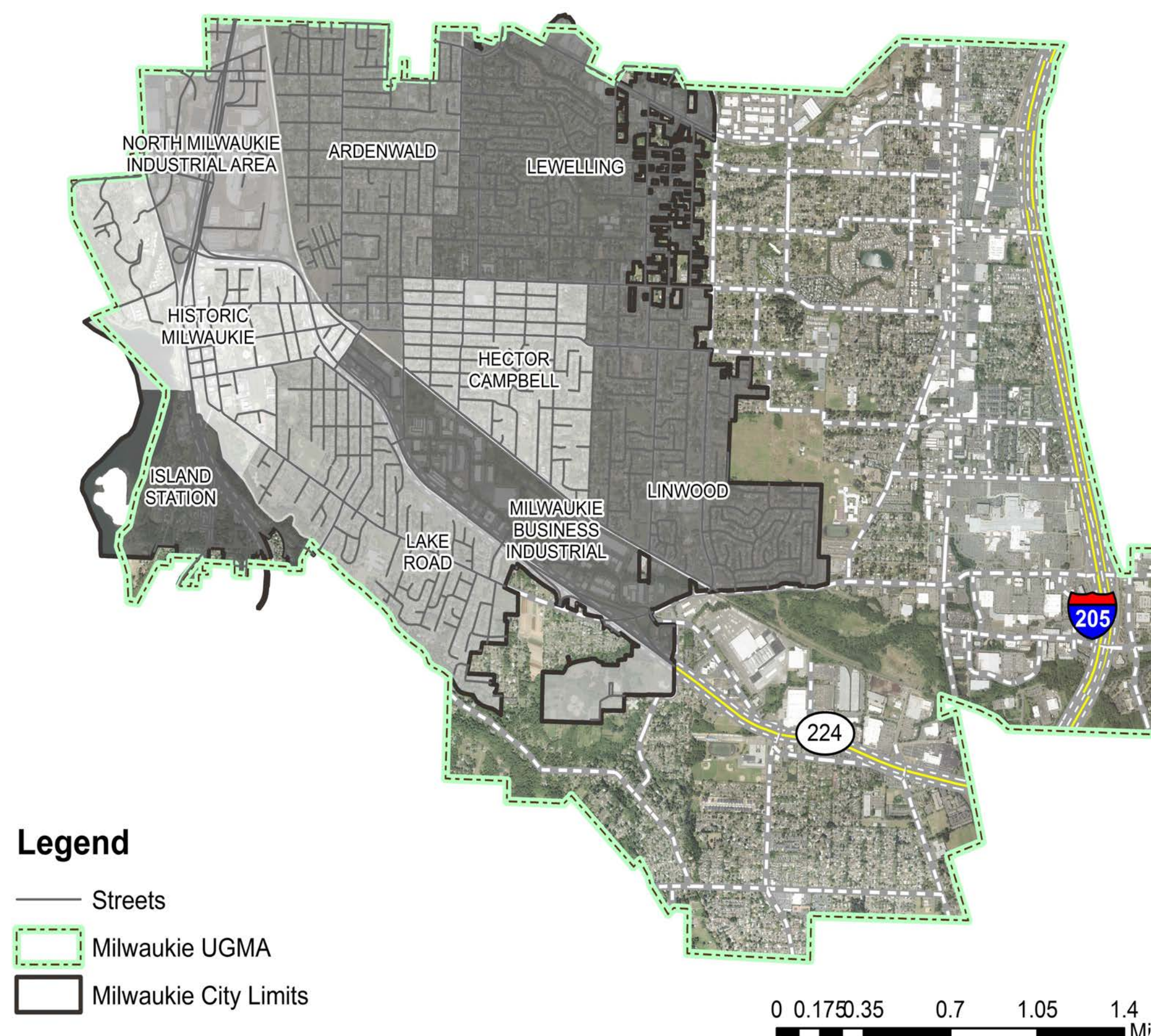
EXAMPLES OF TOPICS COVERED:

- Regional coordination
- Annexation
- Urban services
- Urban form

SAMPLE DRAFT POLICY:

“Maintain a proactive annexation program that encourages and promotes annexation to the City of Milwaukee.”

Milwaukee City Limits and UGMA Boundary



WHAT'S UP NEXT?

ADOPTION OF THE COMPREHENSIVE PLAN POLICIES

PUBLIC COMMENTS ACCEPTED



HOW CAN I PARTICIPATE IN THE UPCOMING PROCESS?

1 SUBMIT COMMENTS

- Visit the project website: www.milwaukieplan.com
All of the draft policies will be available to review there
- Email your written comments to: plan@milwaukieoregon.gov
- OR submit hard copy comments to:
Attn: Comprehensive Plan Update,
6101 SE Johnson Creek Blvd, Milwaukie, 97206

All written comments will be submitted to Planning Commission and City Council for the public hearings

2 ATTEND THE PUBLIC HEARINGS

- Provide in-person public comments at the public hearings
Both the Planning Commission and City Council will accept public comments
- Make sure you're on the Comp Plan Email list!
The City will send out notice of when the exact dates those public hearings will be held

WHAT'S UP NEXT?

THE CITY WILL CONSIDER ADDITIONAL CHANGES TO THE COMPREHENSIVE PLAN & ZONING CODE

1 COMPREHENSIVE PLAN LAND USE MAP AND ZONING MAP AMENDMENTS

- The **land use map** identifies broad categories of land uses (commercial, industrial, residential) and where they are permitted within the City
- The **zoning map** implements the land use map via specific zoning districts (R-5, DMU, etc.)

2 ZONING AND MUNICIPAL CODE AMENDMENTS

- **Middle housing** (ADUs, duplexes, triplexes, fourplexes, cottage clusters)
- **Tree protection** and preservation
- **Flood** protection
- **Neighborhood Hubs**
- Other **community priorities**

Did you know?
Any map or text amendments to the Comprehensive Plan or Zoning Code require public hearings before the Planning Commission and City Council.

3 TRANSPORTATION SYSTEMS PLAN (TSP) AND COMPREHENSIVE PLAN TRANSPORTATION POLICIES

- The TSP is the City's **long-term plan** for transportation improvements
- The TSP's **goals and policies** will be **incorporated** into the updated Comprehensive Plan's Transportation section.

4 MASTER PLAN UPDATES

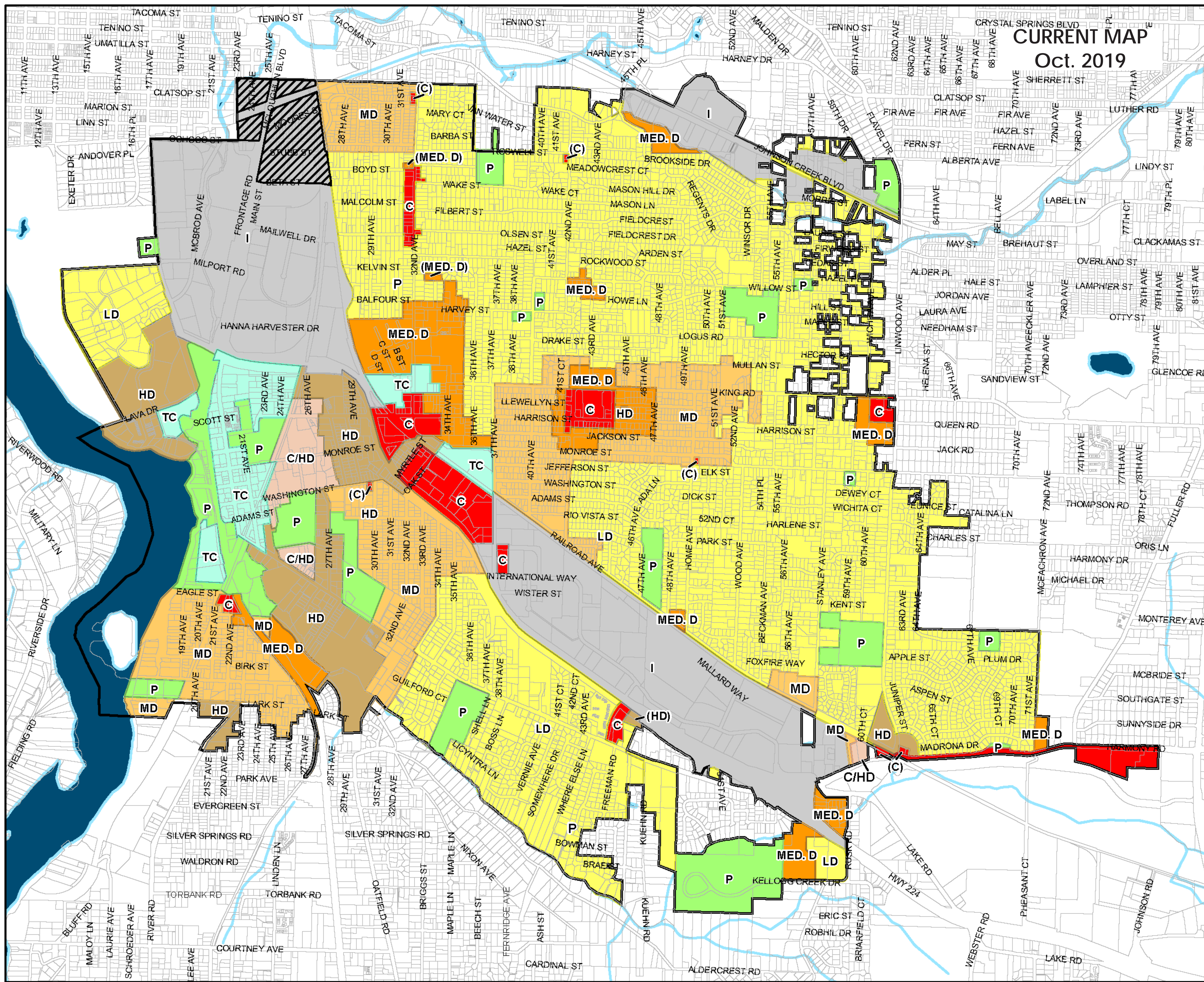
- Sewer Master Plan
- Water Master Plan

5 INVENTORY UPDATES

- Natural Resources Inventory
- Historic Resources Inventory

HOW CAN I STAY INVOLVED IN THESE UPCOMING PROJECTS?

- Make sure you're signed up for the **Comprehensive Plan Email list**. Email plan@milwaukieoregon.gov to sign up.
- Keep checking the **City's social media pages** and read the **Milwaukie Pilot**. Articles/Event notices will be posted there.



LAND USE PLAN MAP

Milwaukee Comprehensive Plan
Map 8

CURRENT MAP
Oct. 2019

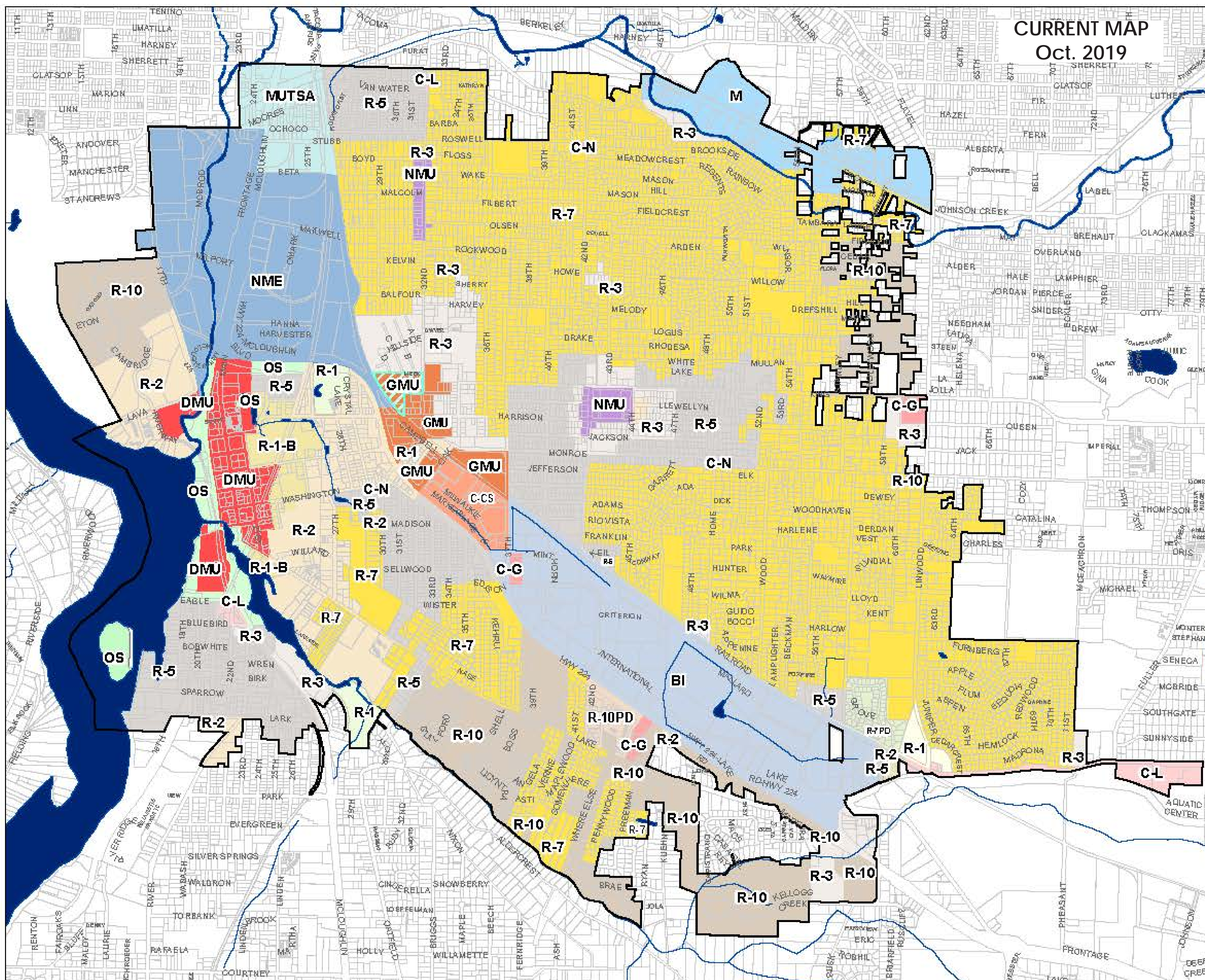
	City Boundary
	Tacoma Station Area
	LD - Low Density
	MD - Moderate Density
	MED. D - Medium Density
	HD - High Density
	C - Commercial
	C/HD - Mixed Use
	I - Industrial
	P - Public
	TC - Town Center
	Water Body

Revised Ord. #2171 & #2174, effective August 19th, 2019

Data Sources: City of Milwaukee GIS, Metro Data Resource Center
The information depicted on this map is for general reference only. The City of Milwaukee cannot accept any responsibility for errors, omissions or positional accuracy. There are no warranties, expressed or implied, including the warranty of merchantability or fitness for a particular purpose, accompanying this product. However, notification of errors would be appreciated.
Please check with Planning Department for most up-to-date information.
303-758-7639
planning@milwaukeeoregon.gov

0 0.25 0.5 Miles

NOTE No changes to the current maps are being proposed with the Comprehensive Plan Policy adoption. Changes to both the Land Use and Zoning Maps will be proposed in 2020-2021 to correspond to the updated Comprehensive Plan policies. Extensive public outreach and input will occur before any changes are made to these maps.



ZONING MAP

CURRENT MAP
Oct. 2019

	BI		NMU
	M		C-N
	MUTSA		C-L
	NME		C-G
			C-CS
			GMU
Residential		Downtown	
	R-1		DMU
	R-1-B		OS
	R-2		Flex Space Overlay
	R-2.5		City Boundary
	R-3		Water Body
	R-5		
	R-7		
	R-7PD		
	R-10		
	R-10PD		

Adopted by Ord. #1438, effective Dec. 5, 1979
Rev. as of Ord. # 2171 & # 2174, effective August 19th, 2019

Data Sources: City of Milwaukee GIS, Metro Data Resource Center
9/23/2019
The information depicted on this map is for general reference only. The City of Milwaukee cannot accept any responsibility for errors, omissions or positional accuracy. There are no warranties, expressed or implied, including the warranty of merchantability or fitness for a particular purpose, accompanying this product. However, notification of errors would be appreciated.
Please check with Planning Department for most up-to-date information.
303-758-7639
planning@milwaukeeoregon.gov

0 0.25 0.5 Miles