

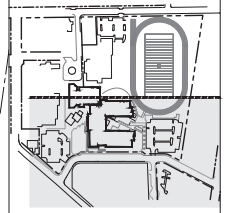


111 SW Fifth Ave., Suite 2400  
 Portland, OR 97204  
 O: 503.273.3231  
 F: 503.274-4661  
 www.kpff.com



**MILWAUKIE HIGH SCHOOL**

NORTH CLACKAMAS SCHOOL DISTRICT  
 2301 SE Willard Street, Milwaukie, OR 97222  
 t: (503) 353-5830  
 f: (503) 353-5846



revisions	
phase	LAND USE SET
date	03/11/2019
project	17010
	EXISTING CONDITIONS

**C100**

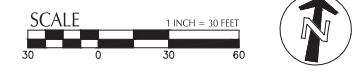
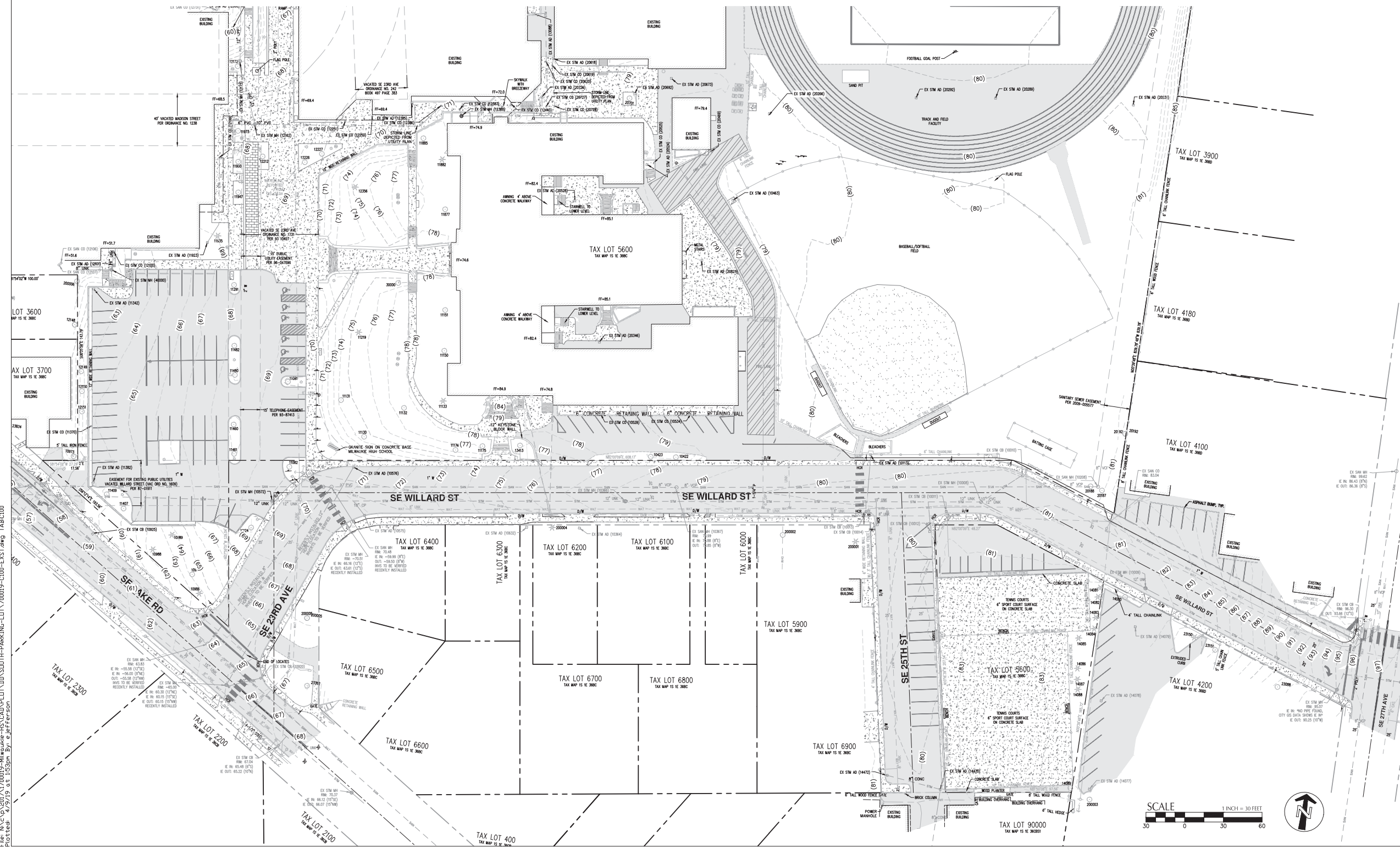
**NOTES:**

- UTILITIES SHOWN ARE BASED ON UNDERGROUND UTILITY LOCATE MARKINGS AS PROVIDED BY OTHERS, PROVIDED PER UTILITY LOCATE TICKET NUMBER 17005061, 1806844, 1806850, 18072916, AND 1807294. THE SURVEYOR MAKES NO GUARANTEE THAT THE UNDERGROUND LOCATES REPRESENT THE ONLY UTILITIES IN THE AREA. CONTRACTORS ARE RESPONSIBLE FOR VERIFYING ALL EXISTING CONDITIONS PRIOR TO BEGINNING CONSTRUCTION.
- FIELD WORK WAS CONDUCTED MARCH 8-22, APRIL 10 & 14, AUGUST 14-18 2017, AND APRIL 9-12, APRIL 30-31 & MARCH 1, 2018.
- VERTICAL DATUM ELEVATIONS ARE NAVD83 DERIVED FROM THE TRIMBLE VRS NOW NETWORK. NETWORK ELEVATIONS WERE CHECKED AGAINST PUBLISHED DATASHEET ELEVATIONS AT NSG BENCHMARK NO. R01487, R01488, AND R01491.
- THIS MAP DOES NOT CONSTITUTE A PROPERTY BOUNDARY SURVEY.
- SURVEY IS ONLY VALID WITH SURVEYOR'S STAMP AND SIGNATURE.
- BUILDING FOOTPRINTS ARE MEASURED TO SIDING UNLESS NOTED OTHERWISE. CONTACT SURVEYOR WITH QUESTIONS REGARDING BUILDING TIES.
- CONTOUR INTERVAL IS 1 FOOT.
- TREES WITH DIAMETER OF 6" AND GREATER ARE SHOWN. TREE DIAMETERS WERE MEASURED UTILIZING A DIAMETER TAPE AT BREAST HEIGHT. TREE INFORMATION IS SUBJECT TO CHANGE UPON ARBORIST INSPECTION.
- HORIZONTAL DATUM: LOCAL DATUM PLANE SCALED FROM OREGON STATE PLANE NORTH 3601, NAD83(2011) EPOCH 2010.0000, BY HOLDING A PROJECT MEAN GROUND COMBINED SCALE FACTOR OF 1.0000945532 AT A CALCULATED CENTRAL PROJECT POINT WITH GRID VALUES OF (NORTH 654950.01, EAST 7654523.35). THE MERIDIAN CONVERGENCE ANGLE AT THE CALCULATED CENTRAL POINT IS -130'48". THE STATE PLANE COORDINATES WERE DERIVED FROM THE TRIMBLE VRS NOW NETWORK WITH HORIZONTAL POSITION CHECKED AGAINST PUBLISHED DATASHEET COORDINATES AT NSG CONTROL POINT PID R01491.

- CITY OF MILWAUKIE ORDINANCE NUMBER 242, BOOK 497 PAGE 383 IS BLANKET IN NATURE AND COVERS 23RD STREET 500 FEET FROM WASHINGTON ST. AND WILLARD ST. FROM LAKE ROAD EASTERLY TO HENNINGMAN ACRES.
- EASEMENTS FOR EXISTING PUBLIC UTILITIES IN VACATED STREET AREAS AND THE CONDITIONS IMPOSED THEREBY, BOOK 181 PAGE 94 DOES NOT DESCRIBE ANY UTILITIES OR EASEMENTS.

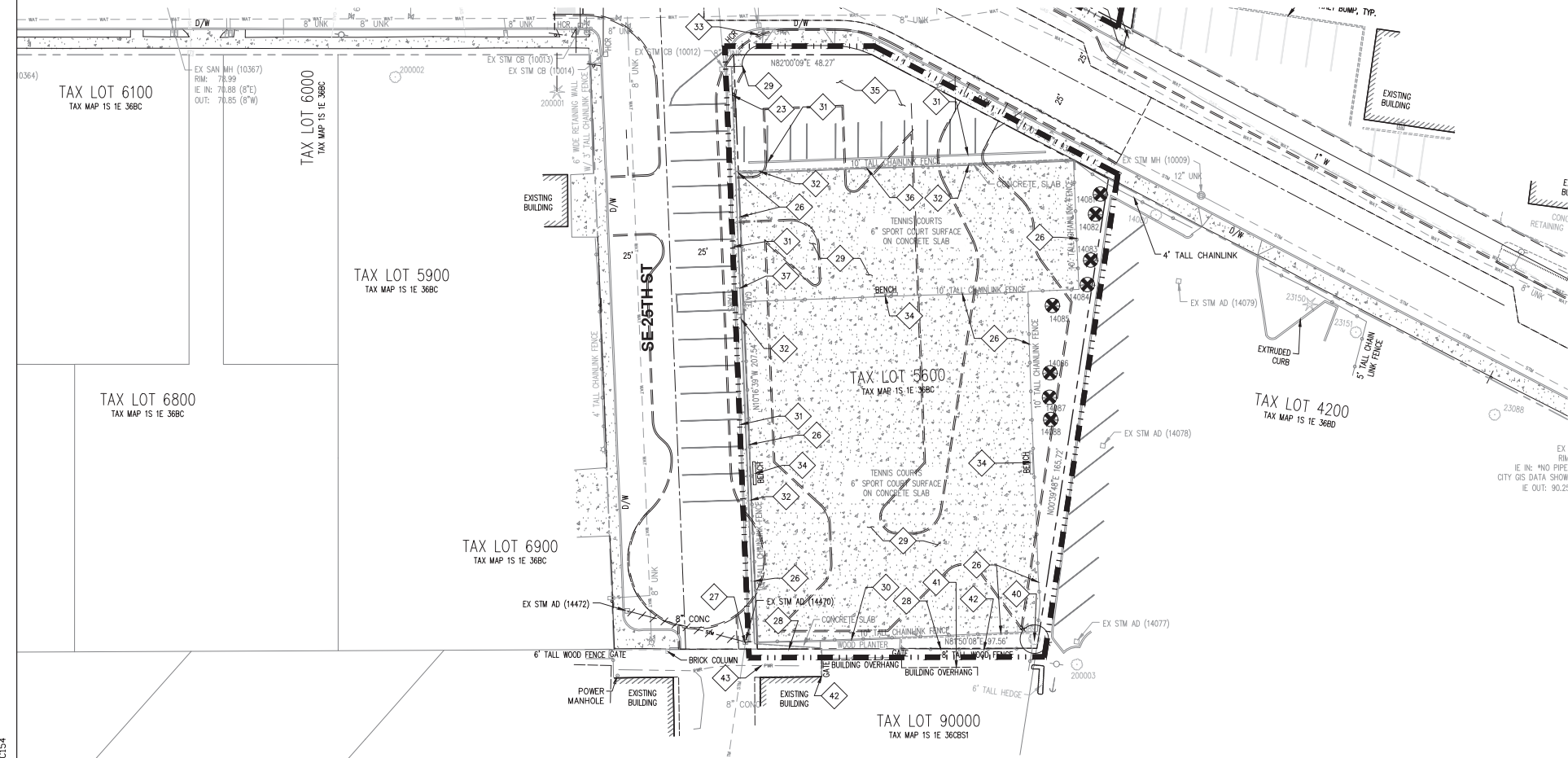
**LEGEND**

<b>EXISTING</b>	<b>EXISTING</b>	<b>EXISTING</b>	<b>EXISTING</b>
DECIDUOUS TREE	STORM SEWER CLEAN OUT	GUY WIRE ANCHOR	RIGHT-OF-WAY LINE
CONIFEROUS TREE	STORM SEWER CATCH BASIN	POWER POLE	BOUNDARY LINE
FIRE HYDRANT	STORM SEWER AREA DRAIN	POWER JUNCTION BOX	PROPERTY LINE
WATER METER	STORM SEWER MANHOLE	POWER PEDESTAL	CENTERLINE
WATER VALVE	GAS METER	COMMUNICATIONS JUNCTION BOX	DITCH
SANITARY SEWER CLEAN OUT	GAS VALVE	COMMUNICATIONS RISER	CURB
SANITARY SEWER MANHOLE	SIGN	MAILBOX	EDGE OF PAVEMENT
	STREET LIGHT		EASEMENT
			FENCE LINE
			GRAVEL EDGE
			POWER LINE
			OVERHEAD WIRE
			COMMUNICATIONS LINE
			FIBER OPTIC LINE
			GAS LINE
			STORM SEWER LINE
			SANITARY SEWER LINE
			WATER LINE



File: N:\C:\p\2017\170019-Hiwaikie-HS-CAD\PL\LOT\_100-SOUTH-PARKING-LOT\_170019-C100-EXST.dwg TAB-C100  
 Pictorial: 4/9/19 at 10:59pm By: eJefferson

File: N:\CADD\2017\1700019-Milwaukie-HS-CADD\PLT\DD\SDUTH-PARKING-LDT\700019-C150-DEM.DWG TAB-C154  
 Plotted: 4/9/19 at 10:39pm By: eJFferson



**SHEET NOTES**

1. CONTRACTOR MAY STAGE WITHIN LIMITS OF DEMOLITION.
2. REMOVE ALL SITE COMPONENTS AND RECYCLE COMPONENTS AS REQUIRED IN THE SPECIFICATIONS.
3. GENERAL DEMOLITION PERMIT SHALL BE SECURED BY THE CONTRACTOR.
4. ALL TRADE LICENSES AND PERMITS NECESSARY FOR THE PROCUREMENT AND COMPLETION OF THE WORK SHALL BE SECURED BY THE CONTRACTOR PRIOR TO COMMENCING DEMOLITION.
5. THE CONTRACTOR SHALL PRESERVE AND PROTECT FROM DAMAGE ALL EXISTING RIGHT-OF-WAY SURVEY MONUMENTATION DURING DEMOLITION. THE CONTRACTOR IS RESPONSIBLE FOR COORDINATING AND PAYING FOR THE REPLACEMENT BY A LICENSED SURVEYOR OF ANY DAMAGED OR REMOVED MONUMENTS.
6. PROTECT ALL ITEMS ON ADJACENT PROPERTIES AND IN THE RIGHT OF WAY INCLUDING BUT NOT LIMITED TO SIGNAL EQUIPMENT, PARKING METERS, SIDEWALKS, STREET TREES, STREET LIGHTS, CURBS, PAVEMENT AND SIGNS. CONTRACTOR SHALL BE RESPONSIBLE FOR RESTORING ANY DAMAGED ITEMS TO ORIGINAL CONDITION.
7. PROTECT STRUCTURES, UTILITIES, SIDEWALKS, AND OTHER FACILITIES IMMEDIATELY ADJACENT TO EXCAVATIONS FROM DAMAGES CAUSED BY SETTLEMENT, LATERAL MOVEMENT, UNDERMINING, WASHOUT AND OTHER HAZARDS.
8. SAWCUT STRAIGHT LINES IN SIDEWALK, AS NECESSARY.
9. CONTRACTOR IS RESPONSIBLE TO CONTROL DUST AND MUD DURING THE DEMOLITION PERIOD, AND DURING TRANSPORTATION OF DEMOLITION DEBRIS. ALL STREET SURFACES OUTSIDE THE CONSTRUCTION ZONE MUST BE KEPT CLEAN.
10. ALL EXPOSED PORTIONS OF UNDERGROUND UTILITIES TO BE ABANDONED SHALL BE PLUGGED.
11. DEMOLITION REQUIREMENTS ARE SHOWN DIAGRAMMATICALLY ON THESE DRAWINGS. THE SHEETS MAY NOT SHOW EVERY SITE ELEMENT THAT MAY NEED TO BE REMOVED. CONTRACTOR IS RESPONSIBLE FOR ESTABLISHING THE SCOPE OF DEMOLITION WORK AND FOR EXAMINING EXISTING SITE CONDITIONS.
12. SEE C710-C713 OF MILWAUKIE HIGH SCHOOL PERMIT SET FOR DEMOLITION WITHIN THE PUBLIC R.O.W.

**DEMOLITION KEY NOTES**

- 20 NOT USED
- 21 NOT USED
- 22 NOT USED
- 23 REMOVE EXISTING SIGNS. COORDINATE WITH PROPERTY OWNER.
- 24 NOT USED
- 25 NOT USED
- 26 REMOVE FENCE
- 27 REMOVE AREA DRAIN/CATCH BASIN AND CONNECTED INFRASTRUCTURE
- 28 SAWCUT EXISTING ASPHALT (REFERENCE SITE PLAN FOR EXACT LOCATION).
- 29 REMOVE EXISTING CONCRETE
- 30 REMOVE EXISTING WOODEN PLANTER
- 31 REMOVE EXISTING CURB
- 32 REMOVE EXISTING WALL
- 33 COORDINATE WITH POWER COMPANY TO REMOVE POWER POLE
- 34 REMOVE EXISTING BENCH
- 35 REMOVE EXISTING ASPHALT PAVEMENT
- 36 REMOVE MOVE GATE AND FENCE
- 37 REMOVE EXISTING STAIRS

**PROTECTION KEY NOTES**

- 40 PROTECT TREE
- 41 PROTECT EXISTING BUILDING/STRUCTURE
- 42 PROTECT EXISTING FENCE/GATE
- 43 PROTECT EXISTING UTILITY

**SHEET LEGEND**

- PROPERTY LINE
- DEMOLITION / WORK LIMITS, SHOWN OFFSET FOR CLARITY
- SAWCUT LINE
- REMOVE OR ABANDON UTILITY LINE IN PLACE
- ⊗ REMOVE TREE
- EXISTING GRADE CONTOUR
- PROPOSED CURB LINE SHOWN FOR REFERENCE
- TREE PROTECTION FENCING



**BRIC**  
ARCHITECTURE, INC.

1233 NW Northrup Street  
Suite 100  
Portland, Oregon 97209  
tel. (503) 595 4900

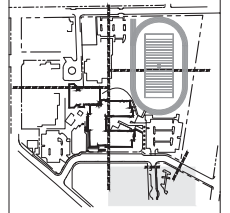


**kpff**

111 SW Fifth Ave., Suite 2400  
Portland, OR 97204  
O: 503.223.3251  
F: 503.274.4661  
www.kpff.com

**NORTH**  
Clackamas Schools

**MILWAUKIE HIGH SCHOOL**  
NORTH CLACKAMAS SCHOOL DISTRICT  
2301 SE Willard Street, Milwaukie, OR 97222  
t: (503) 353-5830  
f: (503) 353-5846



key plan

revisions	

phase	LAND USE SET
date	03/11/2019
project	17010

DEMOLITION PLAN

**C154**



**SHEET NOTES**

1. ALL DIMENSIONS ARE TO FACE OF CURB OR FACE OF WALL (UNLESS OTHERWISE NOTED).
2. SEE LANDSCAPE PLANS FOR PLANTING AND ADDITIONAL SITE FEATURES.
3. SEE LANDSCAPE PLANS FOR ALL PEDESTRIAN HARDSCAPE ON THE LANDSCAPE ARCHITECT SIDE OF THE REFERENCE LINE INCLUDING CONCRETE SCORING AND JOINT LOCATIONS.
4. SEE ARCHITECTURAL PLANS FOR ADDITIONAL DIMENSIONS AND LAYOUT.
5. SEE LANDSCAPE PLANS FOR ALL FENCING HANDRAILS AND GATES.
6. SEE MILWAUKIE HIGH SCHOOL SHEETS C700-C802 FOR PROPOSED FRONTAGE IMPROVEMENTS IN RIGHT-OF-WAY, TO BE PERMITTED UNDER SEPARATE PERMIT.

**SHEET LEGEND**

- PROPERTY LINE
- [Pattern] LIGHT ASPHALT PAVEMENT SECTION (FULL IN PARKING)
- [Pattern] HEAVY ASPHALT PAVEMENT SECTION (DRIVE AISLE)
- [Pattern] CONCRETE SIDEWALK - SEE LANDSCAPE PLANS FOR ADDITIONAL DETAIL
- [Pattern] PERVIOUS CONCRETE - SWT10
- [Pattern] LANDSCAPE AREA - SEE LANDSCAPE PLANS FOR DETAILS
- SAWCUT LINE
- LIMITS OF WORK - OFFSET FOR CLARITY
- ⊙ SITE LIGHTING (SEE SHEET EPH1 FOR PHOTOMETRICS)
- ⊕ PROPOSED TREE
- MATCHLINE
- RED PAINTED CURB

**KEY NOTES**

- | #  | DESCRIPTION                                     |
|----|---|
| 1  | SETBACK DRIVEWAY APPROACH                       |
| 2  | STANDARD CURB                                   |
| 3  | CURB ENDING TAPER TO FLUSH                      |
| 4  | WHEEL STOP                                      |
| 5  | CONCRETE SIDEWALK                               |
| 5a | PERVIOUS CONCRETE SIDEWALK                      |
| 6b | "NO PARKING" ZONE STRIPING                      |
| 6c | 4" PARKING STRIPING, TYPICAL                    |
| 9  | CURB RAMP                                       |
| 11 | FLUSH CONCRETE CROSSING/DRIVEWAY APRON          |
| 15 | SITE LIGHTING - SEE SHEET EPH1 FOR PHOTOMETRICS |
| 19 | FLUSH CURB                                      |
| 20 | HEIGHTENED CURB (MAX 18")                       |
| 32 | PROVIDE STOP BAR                                |
| 33 | CARPOOL PARKING SIGN                            |
| 34 | PROVIDE DIRECTIONAL ARROWS                      |
| 35 | SEE LANDSCAPE PLANS FOR PLANTING INFORMATION    |
| 37 | STOP SIGN                                       |
| 38 | DO NOT ENTER SIGN                               |

**BRIC**  
ARCHITECTURE, INC.

1233 NW Northrup Street  
Suite 100  
Portland, Oregon 97209  
tel. (503) 595 4900



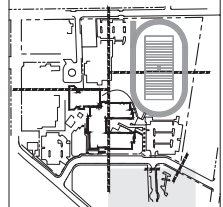
**kpff**

111 SW Fifth Ave., Suite 2400  
Portland, OR 97204  
O: 503.223.3231  
F: 503.274.4661  
www.kpff.com

**NORTH**  
Clackamas Schools

**MILWAUKIE HIGH SCHOOL**

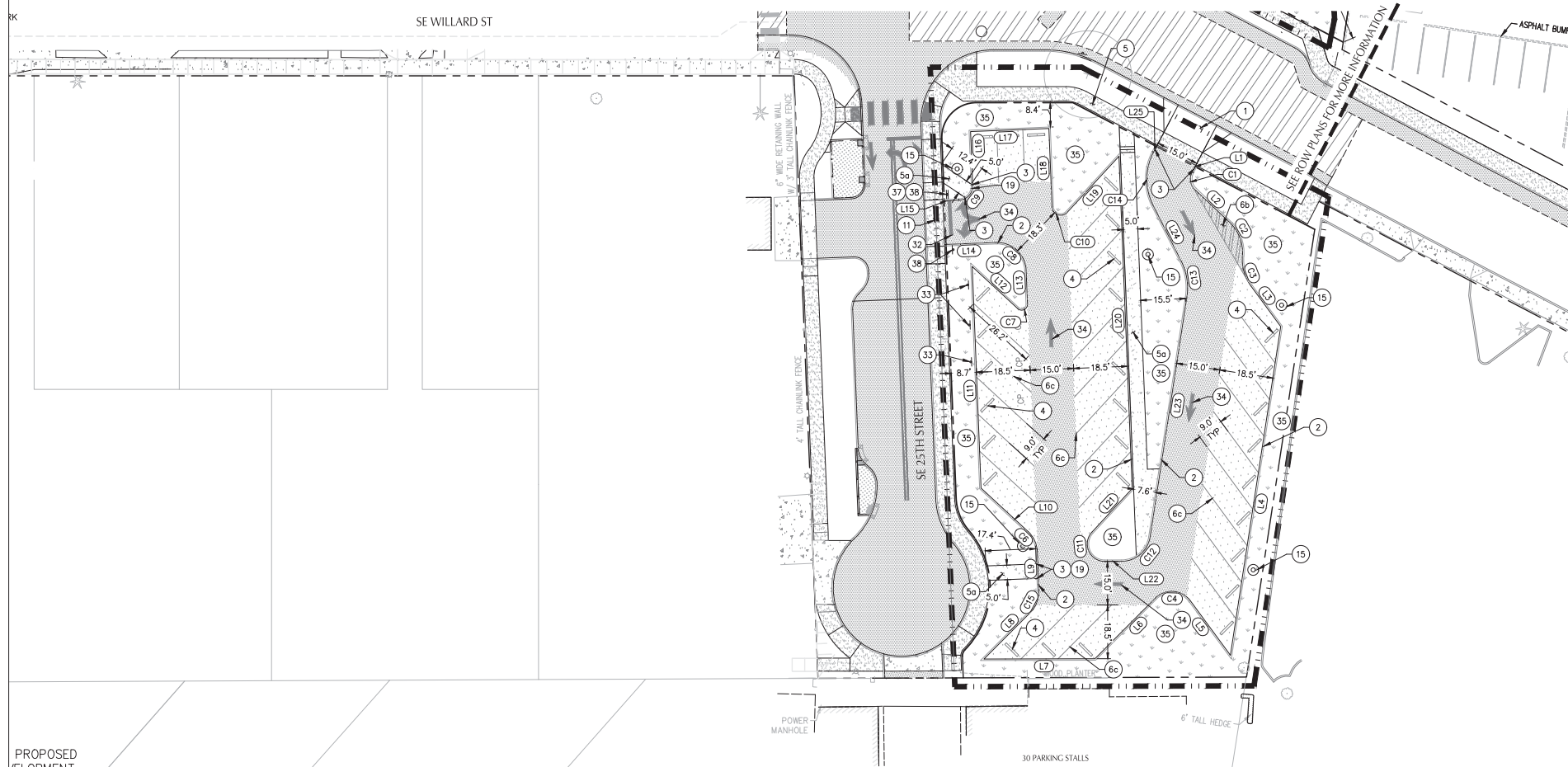
NORTH CLACKAMAS SCHOOL DISTRICT  
2301 SE Willard Street, Milwaukie, OR 97222  
t: (503) 353-5830  
f: (503) 353-5846



key plan

revisions	phase	date	project
	LAND USE SET	03/11/2019	17010
	SITE AND HORIZONTAL CONTROL PLANS		

**C204**



**LINE TABLE**

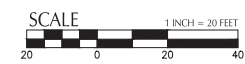
LINE NO.	LENGTH	DIRECTION
L1	2.74'	S19° 40' 20.00"W
L2	15.97'	S54° 41' 48.24"E
L3	17.28'	S44° 17' 29.89"E
L4	114.55'	S0° 42' 30.11"W
L5	23.25'	N44° 17' 29.89"W
L6	29.42'	S36° 54' 36.97"W
L7	38.23'	S81° 50' 06.00"W
L8	22.68'	N36° 54' 36.97"E
L9	13.47'	N10° 16' 38.73"W
L10	22.02'	N55° 16' 38.73"W
L11	76.37'	N10° 16' 38.73"W
L12	21.33'	S55° 16' 38.73"E
L13	11.65'	N10° 16' 38.73"W
L14	17.73'	S79° 43' 21.00"W
L15	5.50'	S79° 43' 21.00"W
L16	18.51'	S10° 16' 38.73"E
L17	27.00'	S79° 43' 21.27"W
L18	27.02'	N10° 16' 38.73"W
L19	26.32'	S34° 43' 21.27"W
L20	114.55'	N10° 16' 38.73"W

**LINE TABLE**

LINE NO.	LENGTH	DIRECTION
L21	20.44'	N34° 43' 21.27"E
L22	5.78'	S81° 50' 08.00"W
L23	83.58'	S0° 42' 30.11"W
L24	21.53'	S34° 43' 56.24"E
L25	2.74'	S19° 40' 20.00"W

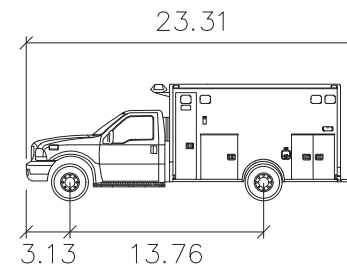
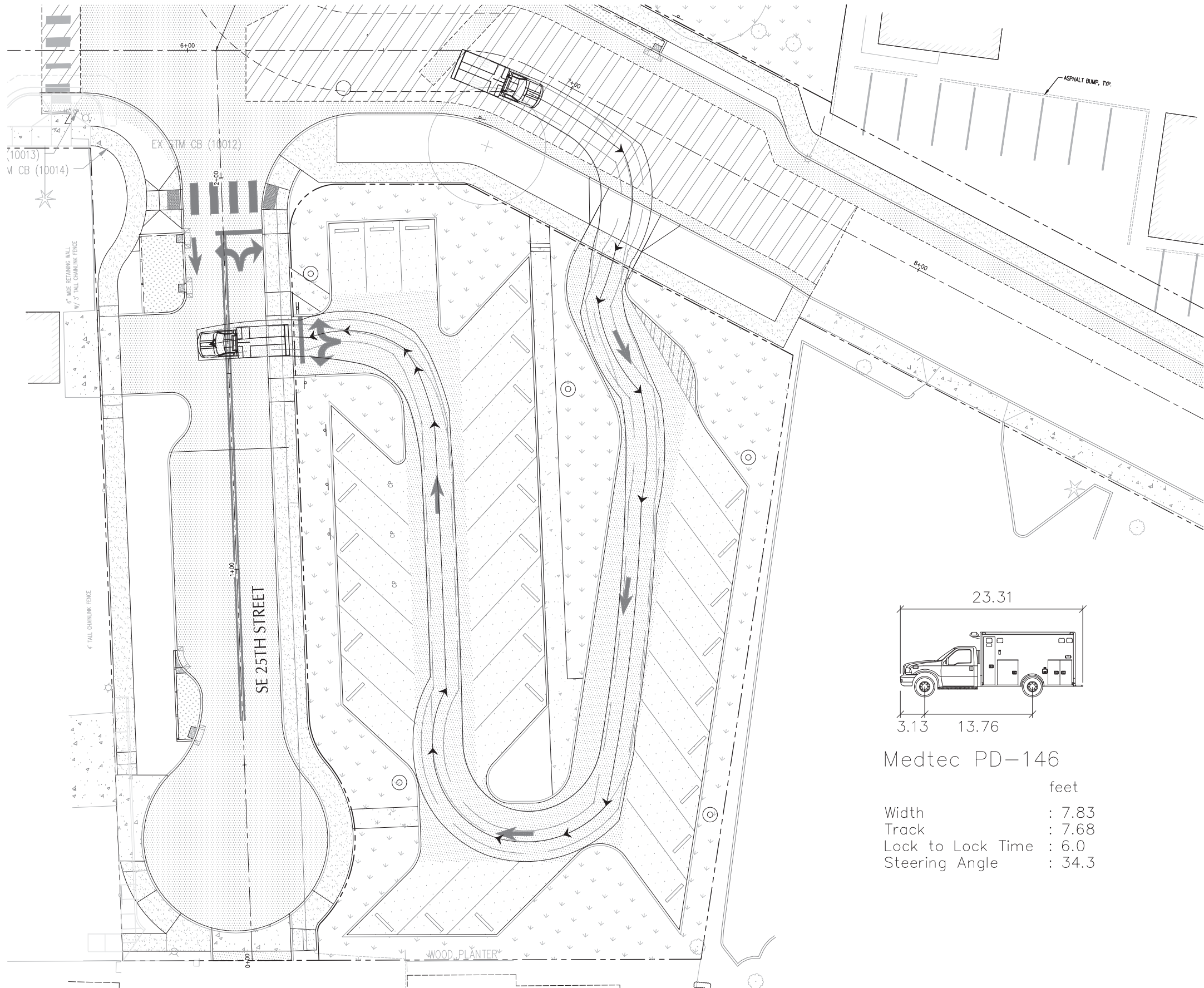
**CURVE DATA TABLE**

CURVE NO.	LENGTH	RADIUS	DELTA
C1	6.89'	5.00'	78°56'39"
C2	12.83'	14.50'	50°40'46"
C3	11.03'	15.50'	40°45'53"
C4	13.79'	8.00'	98°47'53"
C6	7.85'	10.00'	45°00'00"
C7	4.71'	2.00'	135°00'00"
C8	15.71'	10.00'	90°00'00"
C9	7.85'	5.00'	90°00'00"
C10	7.07'	3.00'	135°00'00"
C11	13.92'	6.00'	132°5'13"
C12	14.16'	10.00'	81°07'38"
C13	12.68'	20.50'	35°26'26"
C14	18.99'	20.00'	54°24'16"
C15	8.24'	10.00'	47°11'16"



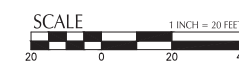
File: N:\C:\p\2017\170019-Milwaukie-HS-CAD\PL\DT\DD\SD\TH-PARKING-LDT\70019-C200-SITE.dwg TAB: C204  
Plotted: 4/9/19 at 1:54pm By: cjefferson

File: N:\CADD\2017\1700019-Milwaukie-HS-CADD\PLT\DD\SDUTH-PARKING-LDT\700019-C215-AUTO-TURN.dwg TAB:C215  
 Plotted: 4/9/19 at 1:54pm By: eJefferson



Medtec PD-146

	feet
Width	: 7.83
Track	: 7.68
Lock to Lock Time	: 6.0
Steering Angle	: 34.3



**BRIC**  
ARCHITECTURE, INC.

1233 NW Northrup Street  
Suite 100  
Portland, Oregon 97209  
tel. (503) 595 4900



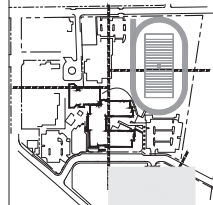
**kpff**

111 SW Fifth Ave., Suite 2400  
Portland, OR 97204  
O: 503.223.3231  
F: 503.274-4661  
www.kpff.com



**MILWAUKIE HIGH SCHOOL**

NORTH CLACKAMAS SCHOOL DISTRICT  
2301 SE Willard Street, Milwaukie, OR 97222  
t: (503) 353-5830  
f: (503) 353-5846



key plan

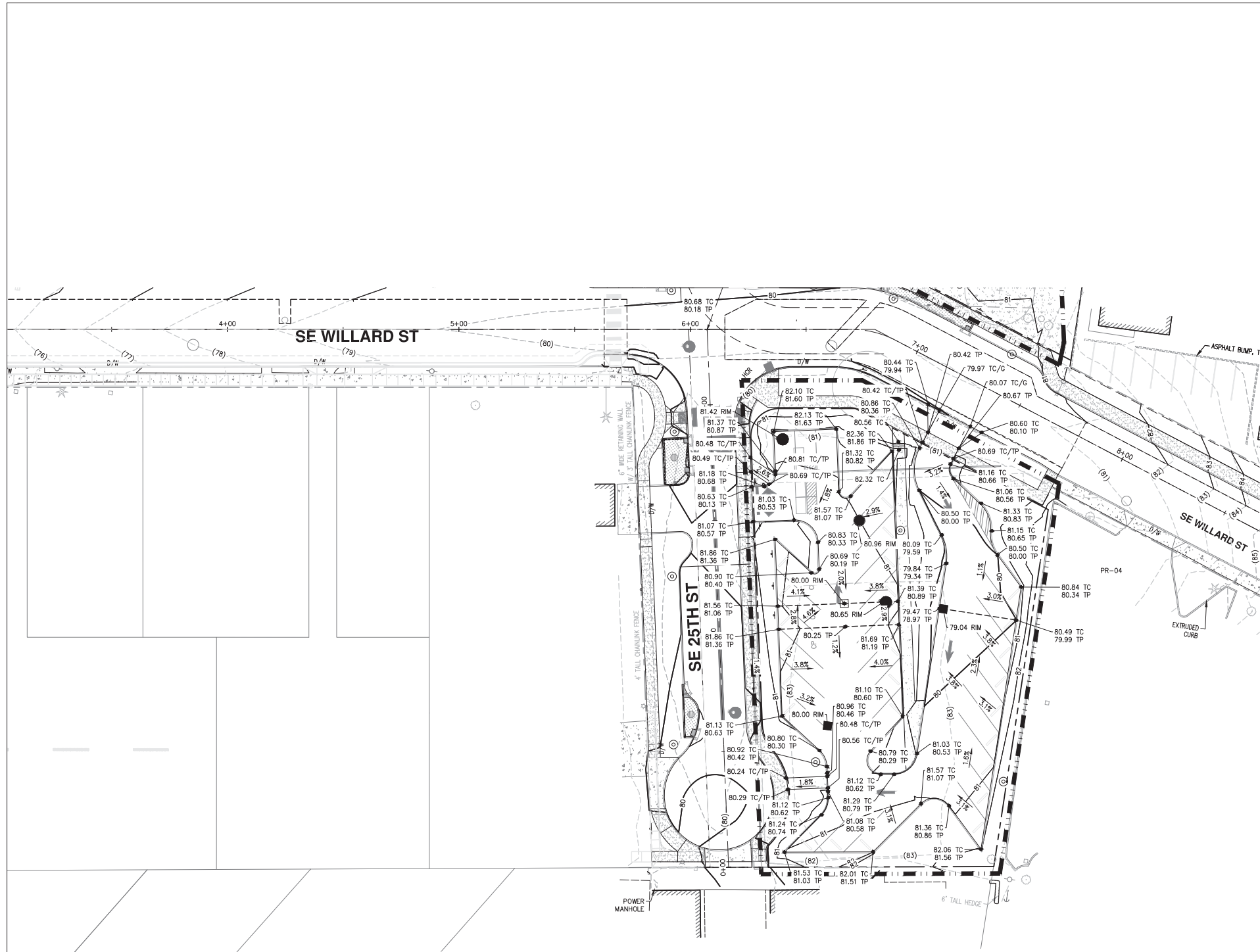
revisions	
phase	LAND USE SET
date	03/11/2019
project	17010

CIRCULATION PLAN

**C215**



File: N:\CADD\2017\1700019-Milwaukie-HS\CADD\PLT\DD\SDUTH-PARKING-LDT\700019-C300-GRADING.dwg TAB: C304  
 Plotted: 4/9/19 at 10:59pm By: eJefferson



**SHEET NOTES**

1. SLOPES PROVIDED ON SLOPE ARROW ARE FOR REFERENCE ONLY.
2. LANDINGS ON ACCESSIBLE ROUTES SHALL NOT EXCEED 2% IN ANY DIRECTION.
3. ALL ACCESSIBLE ROUTES SHALL COMPLY WITH CURRENT ADA ACCESSIBILITY GUIDELINES FOR BUILDING AND FACILITIES (ADAAG).

**GRADING LABEL LEGEND**

CALLOUT	DESCRIPTION
X.X%	GRADING SLOPE AND DIRECTION (DOWNHILL)
XXX.XX	SPOT ELEVATION
XX	DESCRIPTION LISTED BELOW. NO DESCRIPTION MEANS TP OR TG
EG	EXISTING GRADE
FF	FINISHED FLOOR
FG	FINISHED GRADE
RM	RIM OF STRUCTURE
TC	TOP OF CURB
TP	TOP OF PAVEMENT
(XXX.X±)	EXISTING GRADE (MATCH WHERE APPLICABLE)

**SHEET LEGEND**

	DRAINAGE FLOW DIRECTION
	GRADE BREAK
	EX. CONTOUR MINOR
	EX. CONTOUR MAJOR
	CONTOUR MINOR (FG)
	CONTOUR MAJOR (FG)
	VALLEY GUTTER
	SAWCUT LINE
	WALL
	LIMITS OF WORK

**GRADING NOTES**

- (NOTE: NOT ALL NOTES USED ON THIS PLAN)
1. GRADE TO MAINTAIN POSITIVE DRAINAGE WAY FROM BUILDING.
  2. STRIP TOPSOIL AND PROVIDE EXCAVATION OR FILL AS NEEDED TO ACHIEVE SUBGRADE ELEVATION. PROVIDE STRUCTURAL FILL AS SPECIFIED UNDER BUILDING AND PAVEMENT, TYPICAL.
  3. MATCH PAVEMENT GRADES AT DRIVEWAYS.
  4. NOTE: PROVIDE 6" COMPACTED LAYER BUILDING SUBFLOOR MATERIAL UNDER BUILDING SLAB, TYPICAL.
  5. MATCH EXISTING GRADES AT SAWCUT LINE.
  6. SEE LANDSCAPE PLANS FOR PEDESTRIAN WALKWAY AND LANDSCAPE GRADES.

**BRIC**  
ARCHITECTURE, INC.

1233 NW Northrup Street  
Suite 100  
Portland, Oregon 97209  
tel. (503) 595 4900



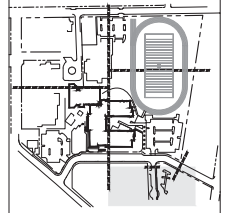
**kpff**

111 SW Fifth Ave., Suite 2400  
Portland, OR 97204  
G: 503.223.3231  
F: 503.274.4661  
www.kpff.com

**NORTH**  
Clackamas Schools

**MILWAUKIE HIGH SCHOOL**

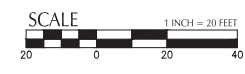
NORTH CLACKAMAS SCHOOL DISTRICT  
2301 SE Willard Street, Milwaukie, OR 97222  
t: (503) 353-5830  
f: (503) 353-5846

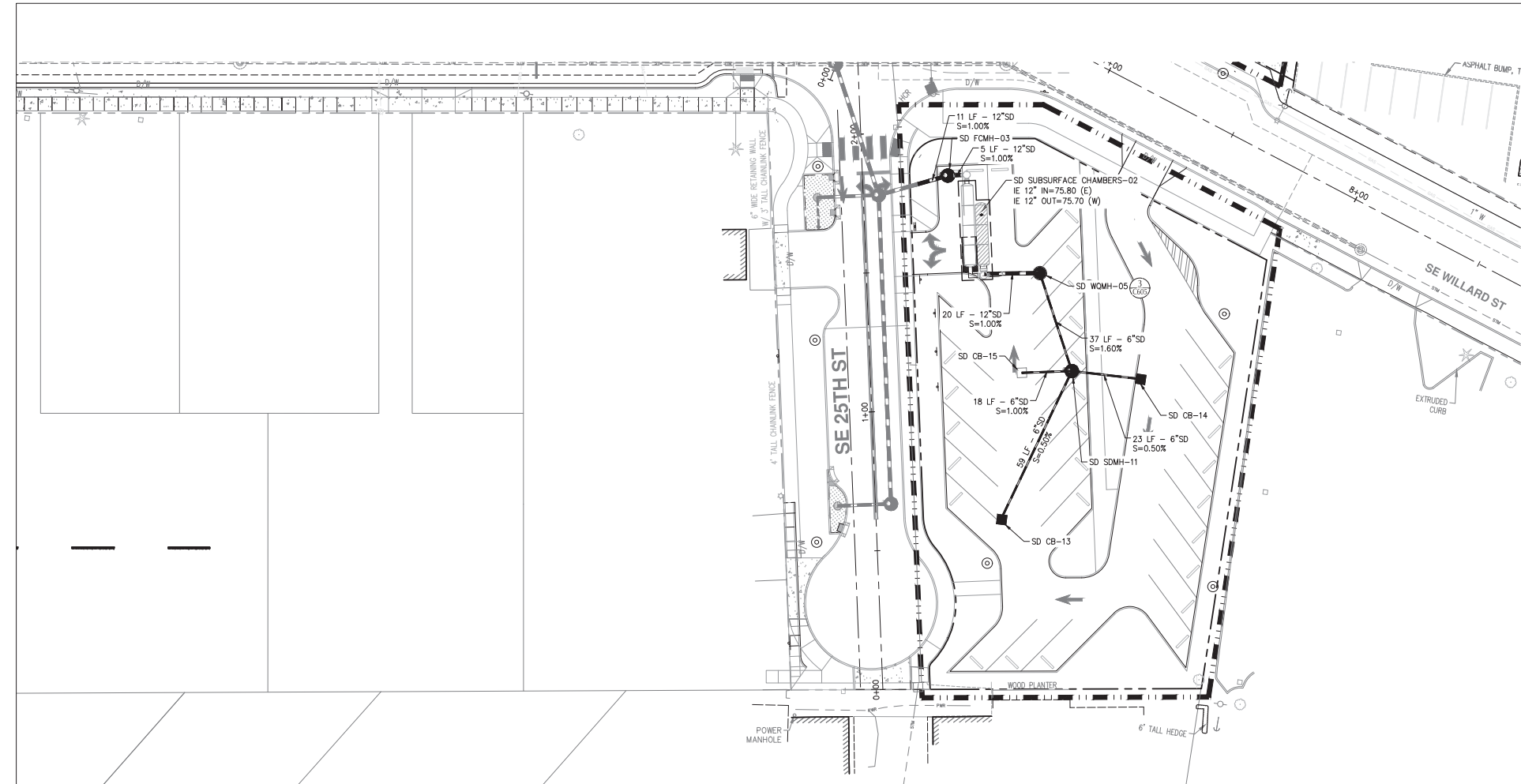


key plan

revisions	phase	LAND USE SET
	date	03/11/2019
	project	17010
		GRADING PLAN

**C304**





SD STRUCTURE TABLE				
STRUCTURE ID	NORTHING	EASTING	RIM ELEVATION	INVERT ELEVATIONS
CB-13	653860.32	7653916.57	80.05	IE 6" OUT=78.49 (N)
CB-14	653917.33	7653959.04	79.82	IE 6" OUT=78.32 (W)
CB-15	653913.66	7653918.09	80.00	IE 6" OUT=78.38 (E)
FCMH-03	653980.22	7653881.86	81.39	IE 12" IN=75.65 (E) IE 12" OUT=75.27 (SW)
SDMH-11	653916.78	7653935.82	80.69	IE 6" IN=78.20 (W) IE 6" IN=78.20 (E) IE 6" IN=78.20 (S) IE 6" OUT=78.10 (NW)
SUBSURFACE CHAMBERS-01	654010.07	7653250.55	63.00	IE 12" IN=58.34 (E) IE 12" OUT=58.34 (S)
WQMH-05	653950.08	7653919.54	81.00	IE 6" IN=77.51 (SE) IE 12" OUT=76.00 (W)

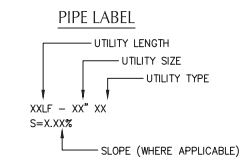
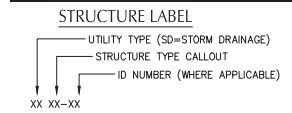
**SHEET NOTES**

- PIPE BEDDING AND BACKFILL FOR ALL ONSITE UTILITIES SHALL BE DONE PER DETAIL.
- STATIONS AND OFFSETS SHOWN ON STRUCTURES ARE SHOWN AT CENTER OF STRUCTURE.
- SEE C402 FOR UTILITY STRUCTURE TABLES INCLUDING LOCATIONS, RIM AND INVERT ELEVATIONS.

**UTILITY KEY NOTES**

NOTE	DESCRIPTION	DETAIL REF.
SD	CONNECT TO STORM DRAIN/ROOF DRAIN. SEE PLUMBING PLANS FOR CONTINUATION. SIZE AND IE AS NOTED.	
	SD SUBSURFACE CHAMBERS	

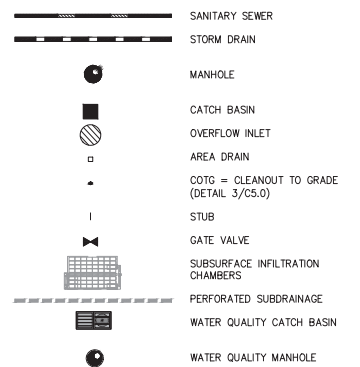
**UTILITY LABEL LEGEND**



**STRUCTURE TYPE**

CALLOUT	DESCRIPTION	DETAIL REF.
AD	AREA DRAIN TYPE 1	5/C602
CB	CATCH BASIN	7/C602
CO	CLEANOUT TO GRADE	2/C602
FD	FOUNDATION DRAINAGE	6/C602
SDMH	STORM MANHOLE	3/C602
OV	OVERFLOW INLET	1/C603
SEDMH	SEDIMENTATION MANHOLE	2/C603
STUB	STUB	
WQMH	WATER QUALITY MANHOLE (3 CARTRIDGE)	8/C602
WQCB	WATER QUALITY CATCH BASIN	1/C605
FCMH	FLOW CONTROL MANHOLE	4/C603
WYE	WYE CONNECTION	
TEE	TEE CONNECTION	

**LEGEND**



**BRIC**  
ARCHITECTURE, INC.

1233 NW Northrup Street  
Suite 100  
Portland, Oregon 97209  
tel. (503) 595 4900



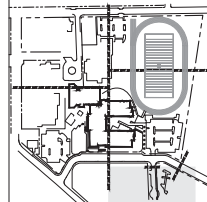
**kpff**

111 SW Fifth Ave., Suite 2400  
Portland, OR 97204  
O: 503.273.3251  
F: 503.274.4681  
www.kpff.com



**MILWAUKIE HIGH SCHOOL**

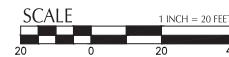
NORTH CLACKAMAS SCHOOL DISTRICT  
2301 SE Willard Street, Milwaukie, OR 97222  
t: (503) 353-5830  
f: (503) 353-5846



key plan

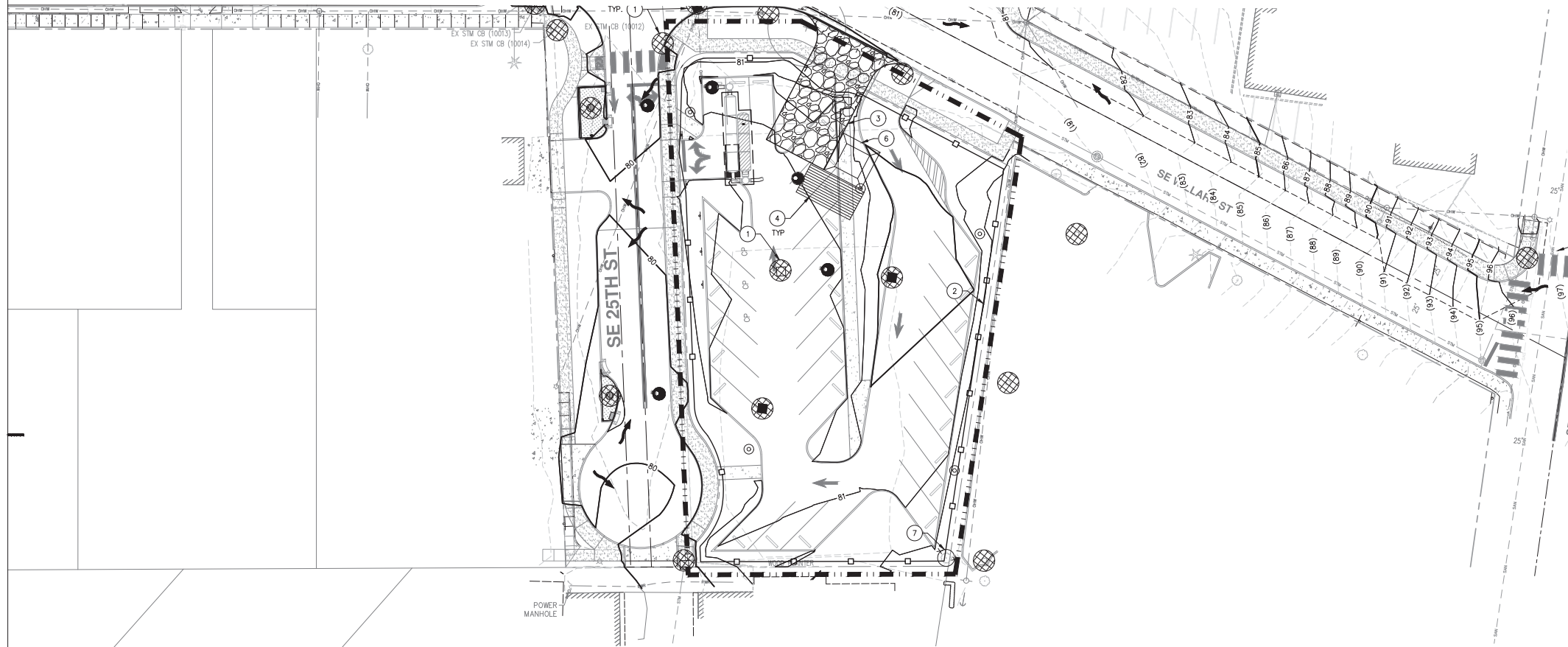
revisions	
phase	LAND USE SET
date	03/11/2019
project	17010
STORM DRAINAGE PLAN	

**C402**



File: N:\C:\p\2017\1700019-Milwaukie-HS-CAD\PL\DT\DD\SD\TH-PARKING-LDT\700019-C400-STDRN.dwg TAB-C-02  
Plotted: 4/9/19 at 1:56pm By: e.jefferson

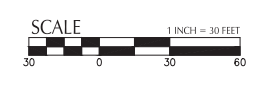
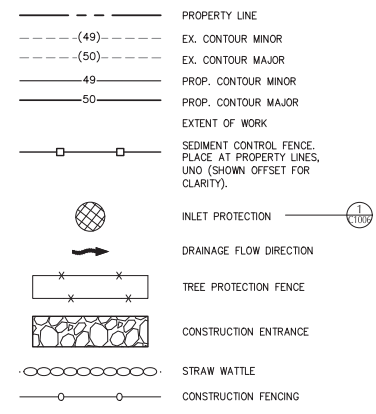
11/20/2017 9:08 AM  
 P:\2017\17-00019-Milwaukie-HS-CAD\PL\DT\DD\SDUTH-PARKING-LDT\700019-C1001-ESC.dwg TABC1005  
 Plotted: 4/9/19 at 1:56pm By: e.jefferson



**SHEET NOTES**

- 1 SEE C1000 FOR NOTES.
  - 2 ALL STOCKPILED TOPSOIL MUST BE COVERED DETAIL PER 7/C1006.
  - 3 CONTRACTOR TO INSTALL AND MOVE CONSTRUCTION FENCING AS PROJECT PHASING REQUIRES.
- (X) **KEY NOTES**
- 1 INLET PROTECTION BARRIER OVER EXISTING CATCH BASIN OR AREA DRAIN
  - 2 SEDIMENT FENCE
  - 3 CONSTRUCTION ENTRANCE
  - 4 TIRE WASH
  - 5 STRAW WATTLE
  - 6 CONCRETE WASHOUT
  - 7 TREE PROTECTION FENCE
  - 8 INSTALL GEOTEXTILE FABRIC UNDER COMMERCIAL CONSTRUCTION ENTRANCE PER DETAIL 4/C1006.
  - 9 CONSTRUCTION FENCING

**SHEET LEGEND**



**BRIC**  
 ARCHITECTURE, INC.

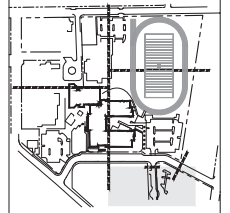
1233 NW Northrup Street  
 Suite 100  
 Portland, Oregon 97209  
 tel. (503) 595 4900



**kpff**  
 111 SW Fifth Ave., Suite 2400  
 Portland, OR 97204  
 O: 503.273.3231  
 F: 503.274.4661  
 www.kpff.com



**MILWAUKIE HIGH SCHOOL**  
 NORTH CLACKAMAS SCHOOL DISTRICT  
 2301 SE Willard Street, Milwaukie, OR 97222  
 t: (503) 353-5830  
 f: (503) 353-5846



key plan

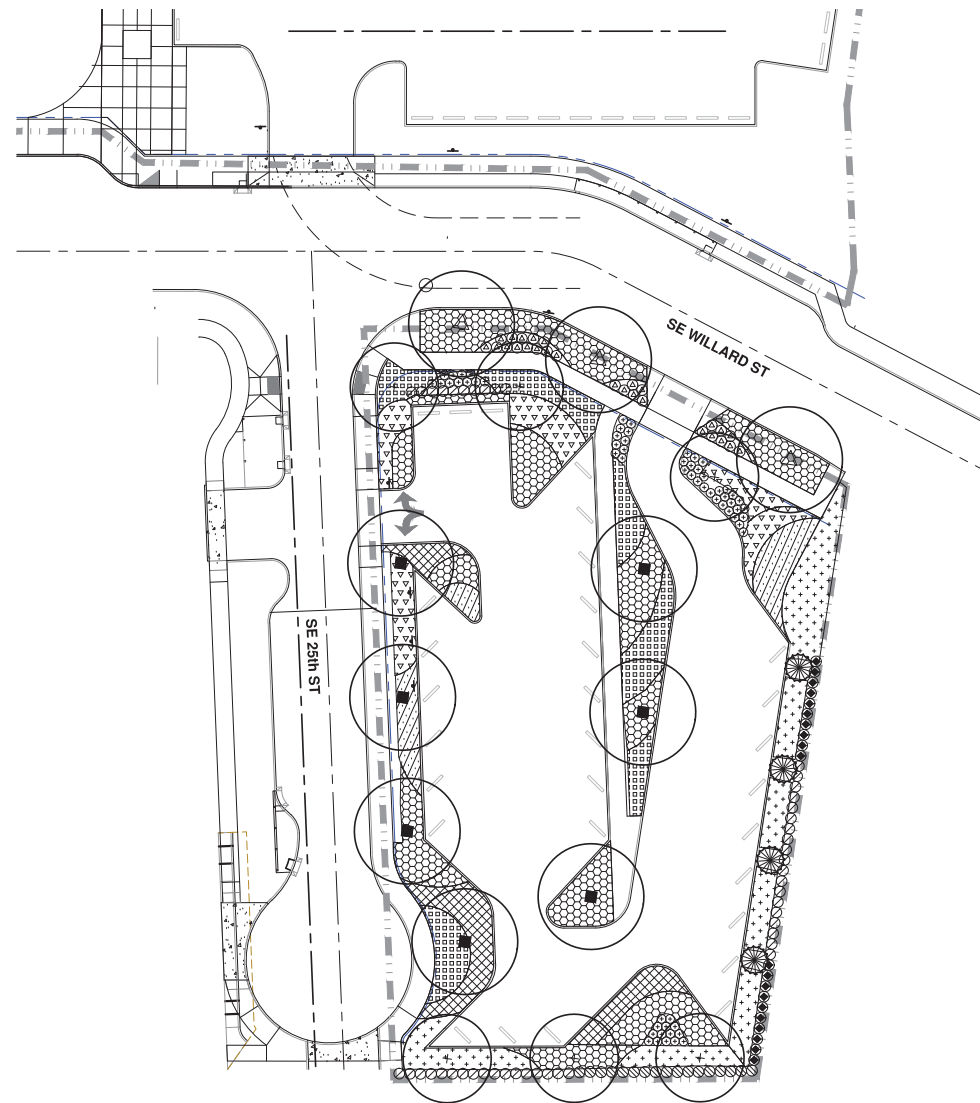
revisions	---

phase	LAND USE SET
date	03/11/2019
project	17010

EROSION & SEDIMENT CONTROL PLAN  
**C1005**



3/15/2019 4:05:19 PM  
 N:\DOW (DOW)\DOW-16 (MHS replacement)\DWG\REF\DOV16-PLNT-FROW.dwg (south parking LUA tab)



**PLANT SCHEDULE**

**TREES**

- 6 Prunus x yedoensis 'Akebono' - Akebono Cherry  
2" CAL/BASE, WELL BRANCHED, LIMBED TO 6'
- 7 Crataegus bitorquata 'Saratoga' - Saratoga Quince  
2" CAL/BASE, WELL BRANCHED, LIMBED TO 6'
- 3 Quercus kelloggii - American Yellowwood  
2" CAL/BASE, WELL BRANCHED, LIMBED TO 6'
- 4 Chamaecyparis obtusa 'Gracilis' - Hinoki Cypress  
6" HT/BASE, WELL BRANCHED

**SHRUBS**

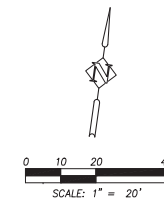
- 62 Cornus sericea 'Kelsey' - Kelsey Dogwood  
1 GAL/CONT., FULL PLANTS, SPACING AS SHOWN
- 17 Daphne x barkwoodii 'Carol Mackie' - Carol Mackie Daphne  
2 GAL/CONT., FULL PLANTS, SPACING AS SHOWN
- 27 Escallonia x 'Newport Dwarf' - Compact Red Escallonia  
1 GAL/CONT., FULL PLANTS, SPACING AS SHOWN
- 46 Viburnum davidii - David Viburnum  
1 GAL/CONT., FULL PLANTS, SPACING AS SHOWN
- 28 Choisya ternata - Mexican Orange  
1 GAL/CONT., FULL PLANTS, SPACING AS SHOWN
- 20 Nandina domestica 'Tyrone' - Heavenly Bamboo  
5 GAL/CONT., FULL PLANTS, SPACING AS SHOWN

**GROUNDCOVER**

- 1,447 Deschampsia cespitosa - Tufted Hair Grass  
1 GAL/CONT., FULL PLANTS, 18" O.C.
- 340 Schizanthus scaberrimus 'Standing Ovation' - Little Bluestem  
1 GAL/CONT., FULL PLANTS, 24" O.C.
- 626 Festuca glauca 'Elijah Blue' - Elijah Blue Fescue  
1 GAL/CONT., FULL PLANTS, 12" O.C.
- 209 Pennisetum alopecuroides 'Hemeln' - Fountain Grass  
1 GAL/CONT., FULL PLANTS, 24" O.C.
- 157 Helictotrichon sempervirens - Blue Oat Grass  
1 GAL/CONT., FULL PLANTS, 30" O.C.
- 442 Mahonia repens - Creeping Oregon Grape  
1 GAL/CONT., FULL PLANTS, 24" O.C.

**GENERAL PLANTING NOTES**

1. ALL CONSTRUCTION SHALL BE PERFORMED IN ACCORDANCE WITH CURRENT CITY OF MILWAUKIE STANDARDS AND THE OREGON UNIFORM BUILDING CODES.
2. INSTALL EROSION CONTROL SYSTEMS IN ACCORDANCE WITH CITY OF MILWAUKIE STANDARDS PRIOR TO SITE WORK AND LANDSCAPE INSTALLATION.
3. MARK AND PROTECT ALL UTILITIES, SITE FEATURES, AND VEGETATION TO REMAIN IN PLACE.
4. REMOVE EXISTING TOP SOILS AND STOCKPILE PER SPECIFICATIONS. AMEND TOP SOILS IN ACCORDANCE WITH LANDSCAPE PLANS AND SPECIFICATIONS PRIOR TO PLACEMENT IN PLANTING AREAS.
5. LANDSCAPE INSTALLATION SHALL INCLUDE PROVISION OF AN AUTOMATIC IRRIGATION SYSTEM DESIGNED TO COMPLIMENT PLANTING MEETING LOCAL AND STATE BUILDING CODES.
6. PLANT MATERIAL INSTALLED SHALL CONFORM IN SIZE AND GRADE TO THE "AMERICAN STANDARD FOR NURSERY STOCK" CURRENT EDITION.
7. THE QUANTITIES OF PLANT MATERIALS SHALL BE AS DETERMINED BY THE CONTRACTOR IN ACCORDANCE WITH THE SPECIFIED SPACING OR LOCATION ON THE PLAN. MATERIAL QUANTITIES SHOWN ON PLAN ARE FOR CONTRACTOR CONVENIENCE ONLY AND SHALL BE VERIFIED BY THE CONTRACTOR PRIOR TO INSTALLATION. SURPLUS OR SHORTAGES OF PLANT QUANTITIES SHALL BE THE RESPONSIBILITY OF THE CONTRACTOR.
8. LANDSCAPE CONTRACTOR SHALL MAINTAIN PLANTINGS FOR THE DURATION OF THE 1 YEAR WARRANTY PERIOD AFTER SUBSTANTIAL COMPLETION AND GUARANTEE ALL PLANTINGS TO BE IN SATISFACTORY AND VIGOROUS HEALTH. PROVIDE MAINTENANCE SCHEDULE PER SPECIFICATIONS.



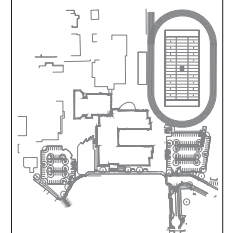
1233 NW Northrup Street  
 Suite 100  
 Portland, Oregon 97209  
 tel. (503) 595 4900



**Harper Houf Peterson Righellis Inc.**  
 ENGINEERS PLANNERS  
 LANDSCAPE ARCHITECTS SURVEYORS

**MILWAUKIE HIGH SCHOOL**

NORTH CLACKAMAS SCHOOL DISTRICT  
 2301 SE Willard Street, Milwaukie, OR 97222  
 t: (503) 353-5830  
 f: (503) 353-5846



revisions	
phase	LAND USE SUBMITTAL
date	03/15/2019
project	17010 PLANTING PLAN - SOUTH PARKING LOT

**L1.0**





**MILWAUKIE HIGH SCHOOL**

NORTH CLACKAMAS SCHOOL DISTRICT  
2301 SE Willard Street, Milwaukie, OR 97222  
t: (503) 353-5830  
f: (503) 353-5846

LAND USE - SOUTH PARKING LOT LUMINAIRE SCHEDULE										
TYPE	DESCRIPTION	HOUSING	SHIELDING	MOUNTING	FINISH	ULIP	DRIVER/POWER	LAMP(S)	INPUT	MFG/CATALOG #
						RATING	SUPPLY			
SA-2	POST TOP LED AREA LUMINAIRES TO MATCH EXISTING. TYPE II DISTRIBUTION	NOMINAL 18-INCH DIAMETER BY OVERALL HEIGHT OF 32-INCH DIE-CAST ALUMINUM	PRECISION ACRYLIC REFRACTIVE OPTICS	18-FOOT HIGH, STRAIGHT STEEL ROUND POLE. POLE TO WITHSTAND 100 MILE PER HOUR WINDS WITH A GUST FACTOR OF 1.3. ABOVE ROUND CONCRETE PEDESTAL	DARK BRONZE			NOMINAL 6655 LUMENS, 4000K, 80 CRI	75 WATTS	LITHONIA LIGHTING MRP LED SERIES TO MATCH EXISTING
SA-5	POST TOP LED AREA LUMINAIRES TO MATCH EXISTING. TYPE V DISTRIBUTION	NOMINAL 18-INCH DIAMETER BY OVERALL HEIGHT OF 32-INCH DIE-CAST ALUMINUM	PRECISION ACRYLIC REFRACTIVE OPTICS	18-FOOT HIGH, STRAIGHT STEEL ROUND POLE. POLE TO WITHSTAND 100 MILE PER HOUR WINDS WITH A GUST FACTOR OF 1.3. ABOVE ROUND CONCRETE PEDESTAL	DARK BRONZE			NOMINAL 6655 LUMENS, 4000K, 80 CRI	75 WATTS	LITHONIA LIGHTING MRP LED SERIES TO MATCH EXISTING

TYPE SA & EXISTING

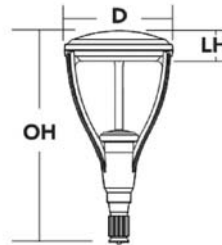


**MRP LED**  
LED Area Luminaire

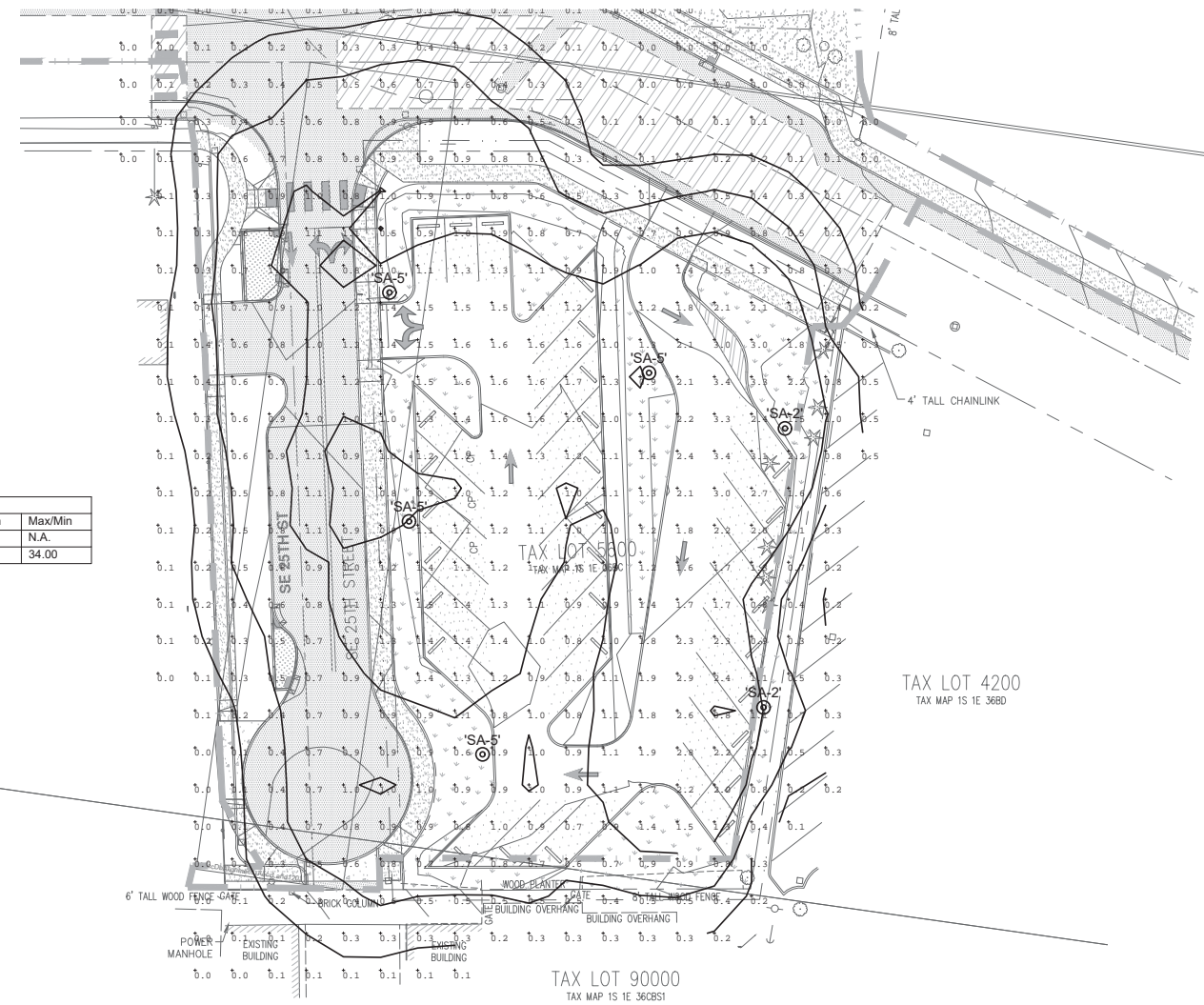


**Specifications**

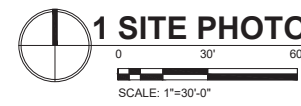
- EPA:** 1.125 ft<sup>2</sup> (0.105 m<sup>2</sup>)
- Luminaire Height:** 6-3/8" (16.2 cm)
- Overall Height:** 32" (81.3 cm)
- Diameter:** 18" (45.7 cm)
- Weight (max):** 37.5 lbs (17 kg)



Calculation Summary							
Label	CalcType	Units	Avg	Max	Min	Avg/Min	Max/Min
Overall Site	Illuminance	Fc	0.79	3.4	0.0	N.A.	N.A.
South East Parking	Illuminance	Fc	1.06	3.4	0.1	10.60	34.00



**1 SITE PHOTOMETRICS - SOUTH PARKING LOT LIGHTING**



key plan

revisions	
phase	LAND USE SET
date	03/15/2019
project	17010

SITE PHOTOMETRICS - LIGHTING

**EPH1**

PROJECT 2017-0517  
CONTACT Deborah Raines  
**INTERFACE**  
ENGINEERING  
100 SW Main St.  
Suite 1600  
Portland, OR 97204  
TEL 503.382.2286  
FAX 503.382.2282  
www.interfaceengineering.com