

CONSTRUCTION NOTES:

- 1 INSTALL 12" DEEP TOPSOIL IN PLANTER BEDS, TYP..
- 2 INSTALL 6" DEEP TOPSOIL IN LAWN AREAS, TYP.
- 3 INSTALL 18" STORMWATER FACILITY TOPSOIL IN SWALE, TYP.

LEGEND - WATER QUALITY SWALE

| | |
|-----------------------------|--|
| ZONE B: 1470 SF | |
| SHRUBS | |
| 20% | <i>Salix purpurea nana</i> - Blue Arctic Willow |
| 20% | <i>Rubus parviflorus</i> - Thimbleberry |
| 20% | <i>Gaultheria shallon</i> - Salal |
| 20% | <i>Mahonia nervosa</i> - Dull Oregon Grape |
| 20% | <i>Symphoricarpos alba</i> - Common Snowberry |
| #1 CONT | FULL PLANTS IN DRIFTS OF 5 - 7 PLANTS |
| GROUND COVER | |
| 50% | <i>Arctostaphylos uva-ursi</i> - Kinnikinnick |
| 50% | <i>Mahonia repens</i> - Oregon Grape |
| #1 CONT | CONT., FULL PLANTS, 1" O.C. |
| ZONE A: 1035 SF | |
| HERBACEOUS PLANTINGS | |
| 25% | <i>Juncus patens</i> - Sprain Rush |
| 25% | <i>Scirpus microcarpus</i> - Small Fruited Bulrush |
| 25% | <i>Carex obnupta</i> - Slough Sedge |
| 25% | <i>Carex densa</i> - Dense Sedge |
| #1 CONT | CONT., FULL PLANTS, 1.25' O.C. |

LEGEND

TREES

| | |
|------|--|
| 14 | <i>Acer circinatum</i> - Vine Maple |
| 1/2" | CAL. B&B, WELL BRANCHED, LIMBED TO 6' |
| 2 | <i>Pinus contorta</i> 'Contorta' - Shore Pine |
| 6' | HT, B&B, FULL TREES, BRANCHED TO GROUND |
| 7 | <i>Chamaecyparis nootkatensis</i> 'Pendula' - Weeping Alaska Cedar |
| 6' | HT, B&B, FULL TREES, BRANCHED TO GROUND |
| 6 | <i>Chamaecyparis obtusa</i> 'Gracilis' - Hinoki Falsecypress |
| 6' | HT, B&B, FULL TREES, BRANCHED TO GROUND |
| 2 | <i>Lagerstromea</i> 'Natchez' - Natchez Crepemyrtle |
| 1.5" | CAL. B&B, WELL BRANCHED, LIMBED TO 6' |
| 1 | <i>Styrax japonicus</i> - Japanese Snowbell |
| 1.5" | CAL. B&B, WELL BRANCHED, LIMBED TO 6' |

SHRUBS

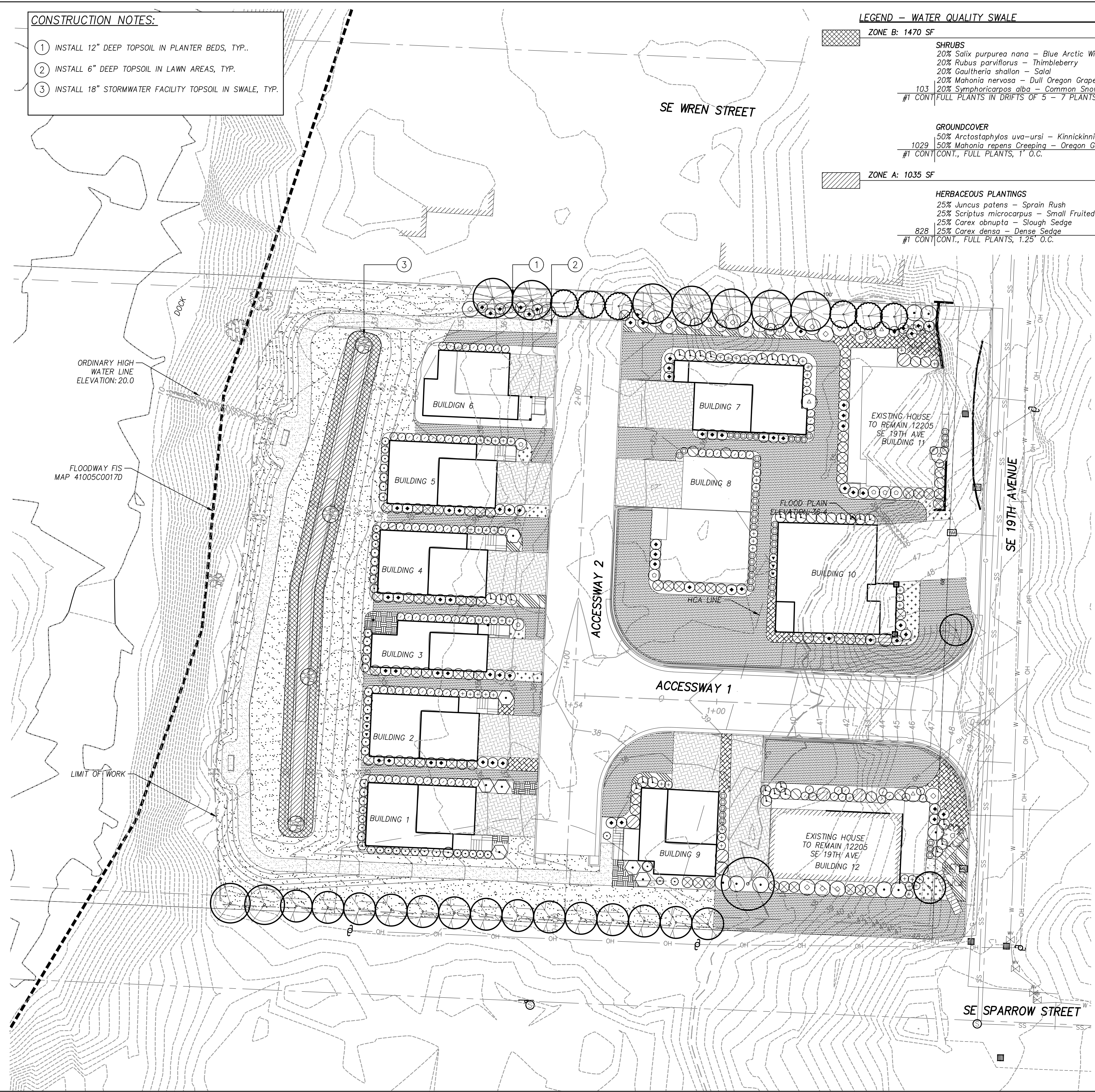
| | |
|-------|--|
| 7 | <i>Abelia x grandiflora</i> - Glossy Abelia |
| 5 GAL | CONT., FULL PLANTS, SPACING AS SHOWN |
| 52 | <i>Azelea</i> 'Delaware Valley White' - Delaware Valley White Azelea |
| 2 GAL | CONT., FULL PLANTS, SPACING AS SHOWN |
| 44 | <i>Ilex crenata</i> 'Green Island' - Japanese Holly |
| 2 GAL | CONT., FULL PLANTS, SPACING AS SHOWN |
| 6 | <i>Fatsia japonica</i> - Japanese Aralia |
| 1 GAL | CONT., FULL PLANTS, SPACING AS SHOWN |
| 6 | <i>Juniperus squamata</i> 'Blue Star' - Blue Star Juniper |
| 5 GAL | CONT., FULL PLANTS, SPACING AS SHOWN |
| 13 | <i>Kalmia latifolia</i> 'Heart of Fire' - Heart of Fire Mt. Laurel |
| 5 GAL | CONT., FULL PLANTS, 4" OC |
| xx | <i>Osmanthus delavayi</i> - Sweet Olive |
| 2 GAL | CONT., FULL PLANTS, SPACING AS SHOWN |
| 71 | <i>Rosa</i> 'Scarlet Meidiland' - Scarlet Meidiland Rose |
| 2 GAL | CONT., FULL PLANTS, SPACING AS SHOWN |
| xx | <i>Rhododendron</i> 'P.M.' - P.M. Rhododendron |
| 2 GAL | CONT., FULL PLANTS, 5" OC |
| 7 | <i>Rhododendron</i> 'Yaku Princess' - Yaku Princess Rhododendron |
| 2 GAL | CONT., FULL PLANTS, 5" OC |
| 68 | <i>Rhaphalepis umbellata</i> 'Minor' - Dwarf Yeddo Hawthorn |
| 2 GAL | CONT., FULL PLANTS, 5" OC |
| 29 | <i>Sarcococca ruscifolia</i> - Sweet Box |
| 2 GAL | CONT., FULL PLANTS, 3" OC |
| 7 | <i>Ceanothus thyrsiflorus</i> 'Skylark' - Blue Blossom |
| 1 GAL | CONT., FULL PLANTS, SPACING AS SHOWN |
| 29 | <i>Mahonia aquifolium</i> 'Compacta' - Compact Oregon Grape |
| 1 GAL | CONT., FULL PLANTS, SPACING AS SHOWN |
| 92 | <i>Polystichum munitum</i> - Sword Fern |
| 1 GAL | CONT., FULL PLANTS, SPACING AS SHOWN |
| 2 | <i>Ribes sanguineum</i> - Flowering Currant |
| 1 GAL | CONT., FULL PLANTS, SPACING AS SHOWN |
| 20 | <i>Vaccinium ovatum</i> - Evergreen Huckleberry |
| 1 GAL | CONT., FULL PLANTS, SPACING AS SHOWN |

GROUND COVER

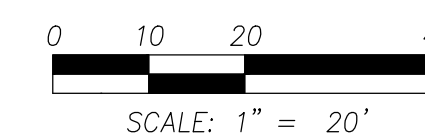
| | |
|-------|--|
| 772 | <i>Iberis sempervirens</i> - Candytuft |
| 1 GAL | CONT., FULL PLANTS, 1" O.C. |
| 106 | <i>Sarcococca hookeriana</i> var. <i>humilis</i> - Sweet Box |
| 1 GAL | CONT., FULL PLANTS, 2" O.C. |
| 114 | <i>Erica carnea</i> 'Vivelli' - Winter Heath |
| 1 GAL | CONT., FULL PLANTS, 2" O.C. |
| 66 | <i>Mahonia nervosa</i> - Longleaf Mahonia |
| 1 GAL | CONT., FULL PLANTS, 2" O.C. |

SEED MIXES

| | |
|--|--|
| | Northwest Supreme Lawn Mix by Sunmark Seeds (or approved equal) 8 LB / 1000 SF |
| | City of Portland Native 50/50 Meadow Mix 1 LB / 1000 SF |



SEE SHEET 8 FOR PLANTING NOTES

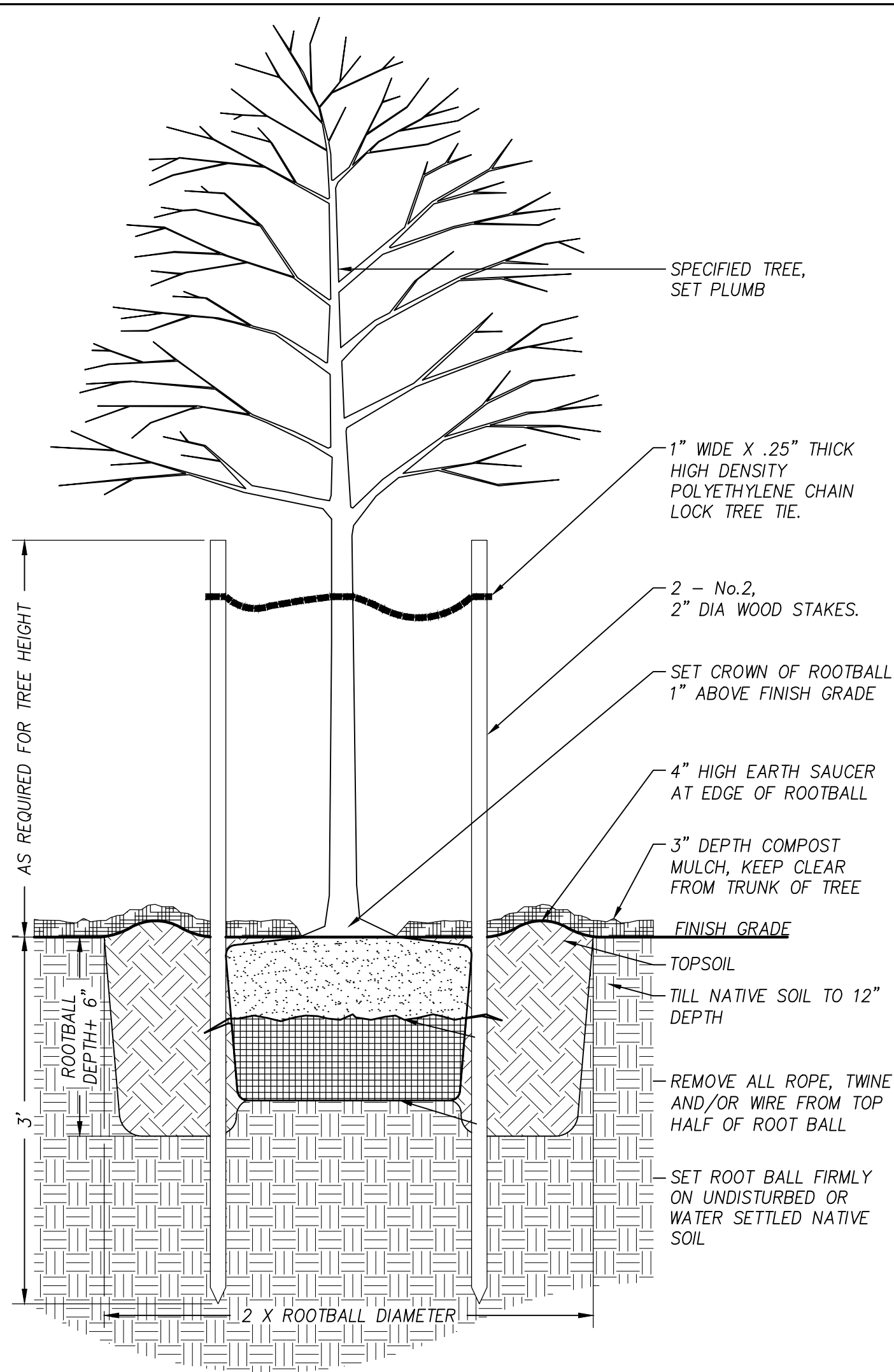


PLANTING PLAN
RIVER CLUSTER DEVELOPMENT
MILWAUKIE, OREGON

Harper Houf Peterson
Righellis Inc.
ENGINEERS*PLANNERS
 LANDSCAPE ARCHITECTS*SURVEYORS
 205 SE Spokane Street, Suite 200, Portland, OR 97202
 phone: 503.221.1131 www.hhpr.com fax: 503.221.1171

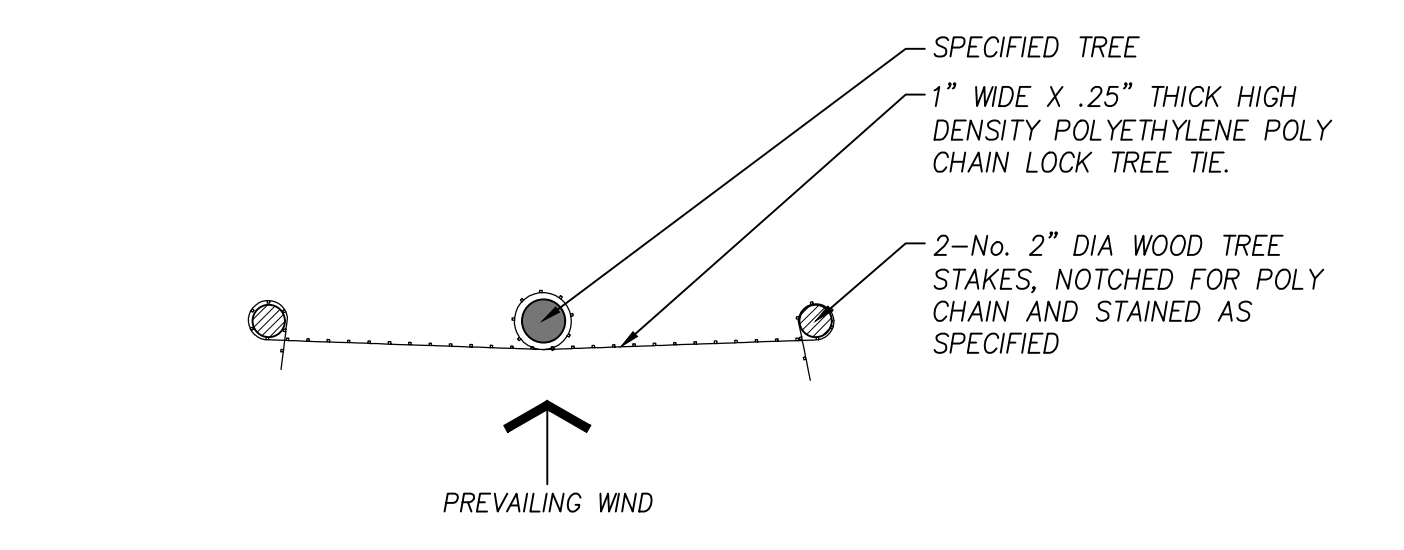
REGISTERED
 LANDSCAPE ARCHITECT
 747
 JEFFERY P. CREEL
 OREGON
 05/13/11

| | | | | | | | |
|------------|-----|--------|-----------------|----------|-----|-------|-----------|
| DESIGNED: | JPC | DRAWN: | JPC | CHECKED: | KKV | DATE: | JUNE 2019 |
| REVISIONS | NO. | DATE | DESCRIPTION | | | | |
| APRIL 2019 | 1 | | REVISED GRADING | | | | |
| SHEET NO. | | | 7 | | | | |
| JOB NO. | | | MSC-221 | | | | |

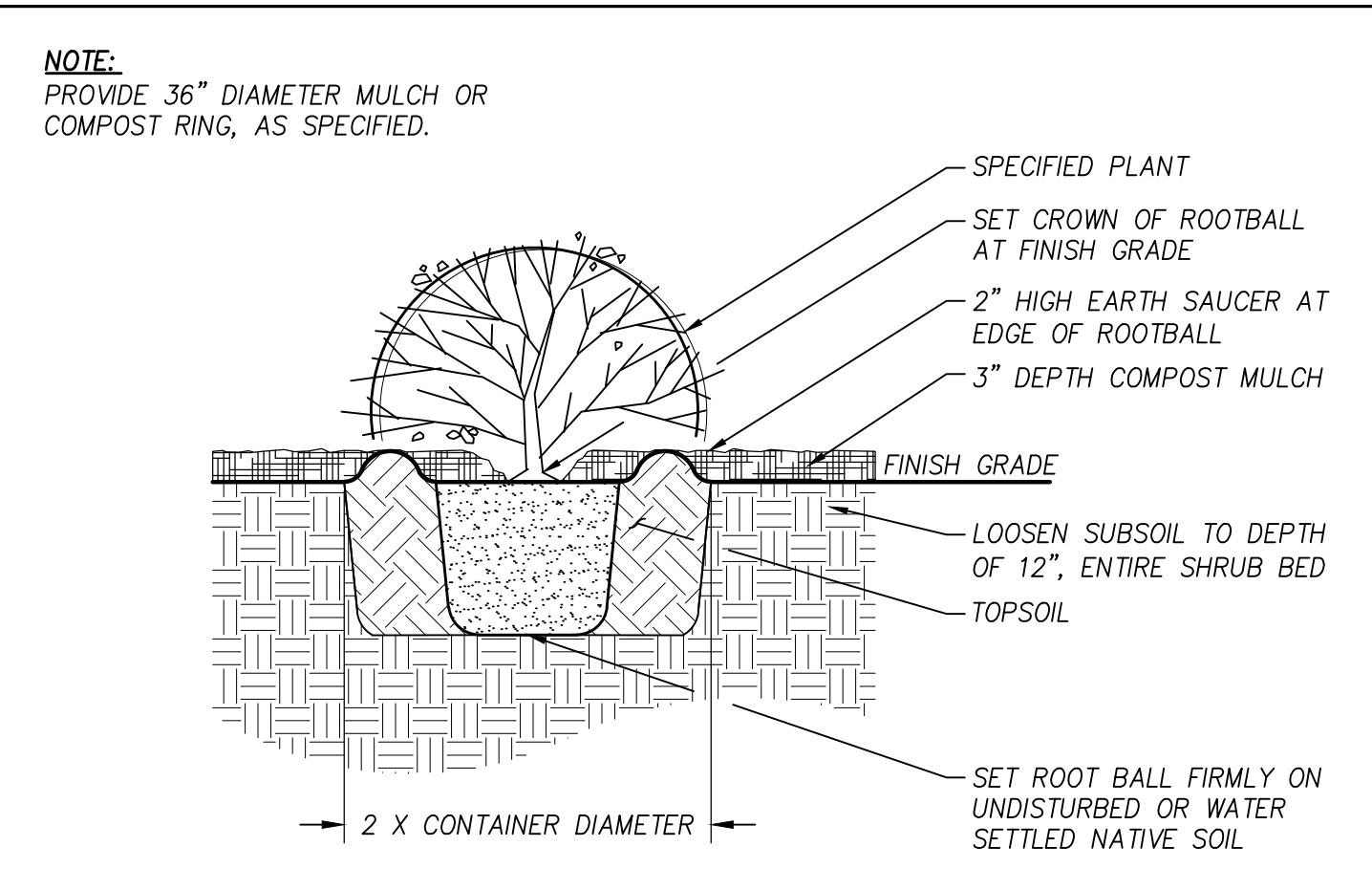


1 DECIDUOUS TREE PLANTING
Section
NOT TO SCALE

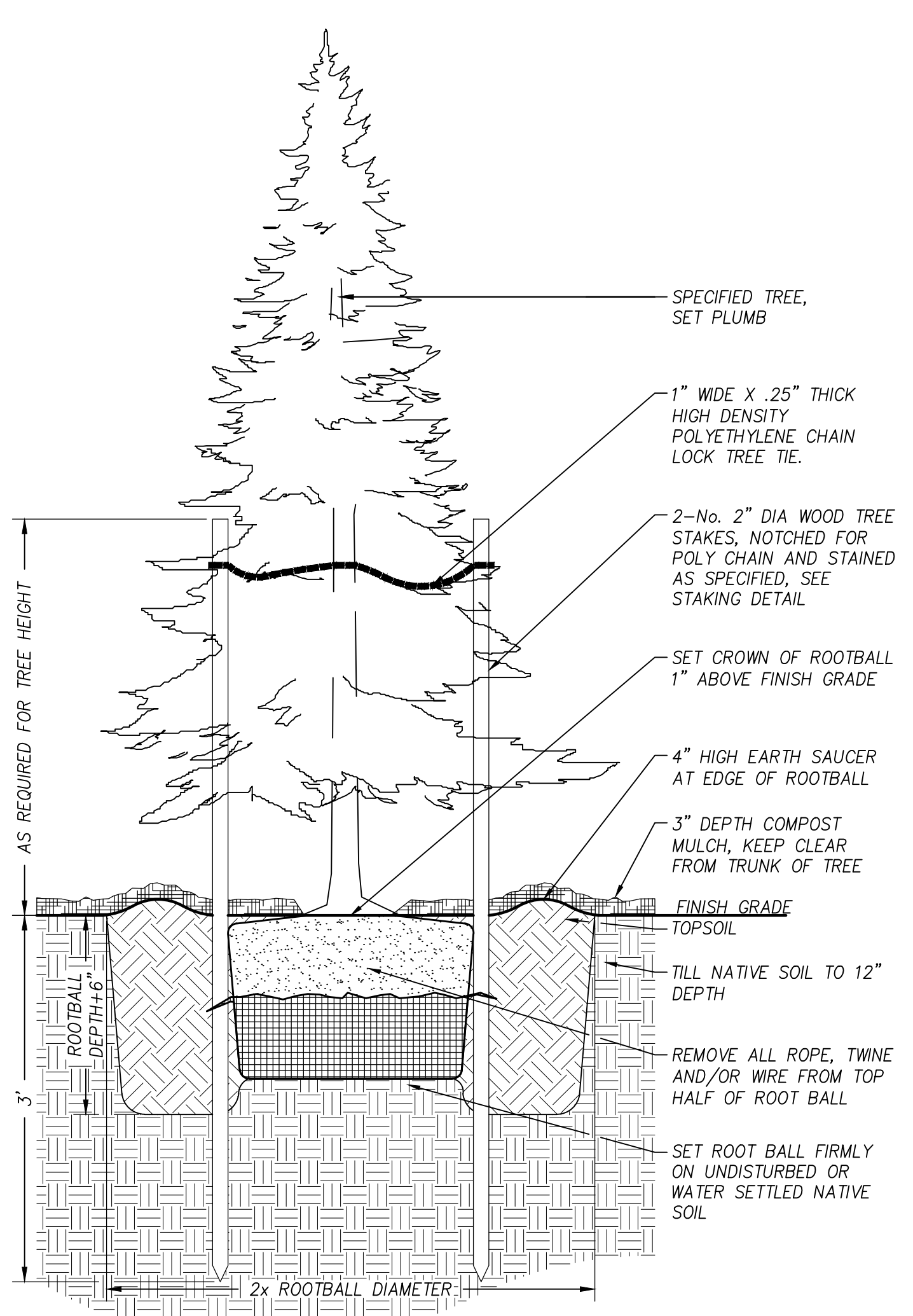
NOTE:
WRAP POLY CHAIN AROUND NOTCHED STAKE AND LOCK TO SECURE. WRAP CENTER OF POLY CHAIN AROUND TREE TRUNK TO MOVE 3" IN ALL DIRECTIONS.



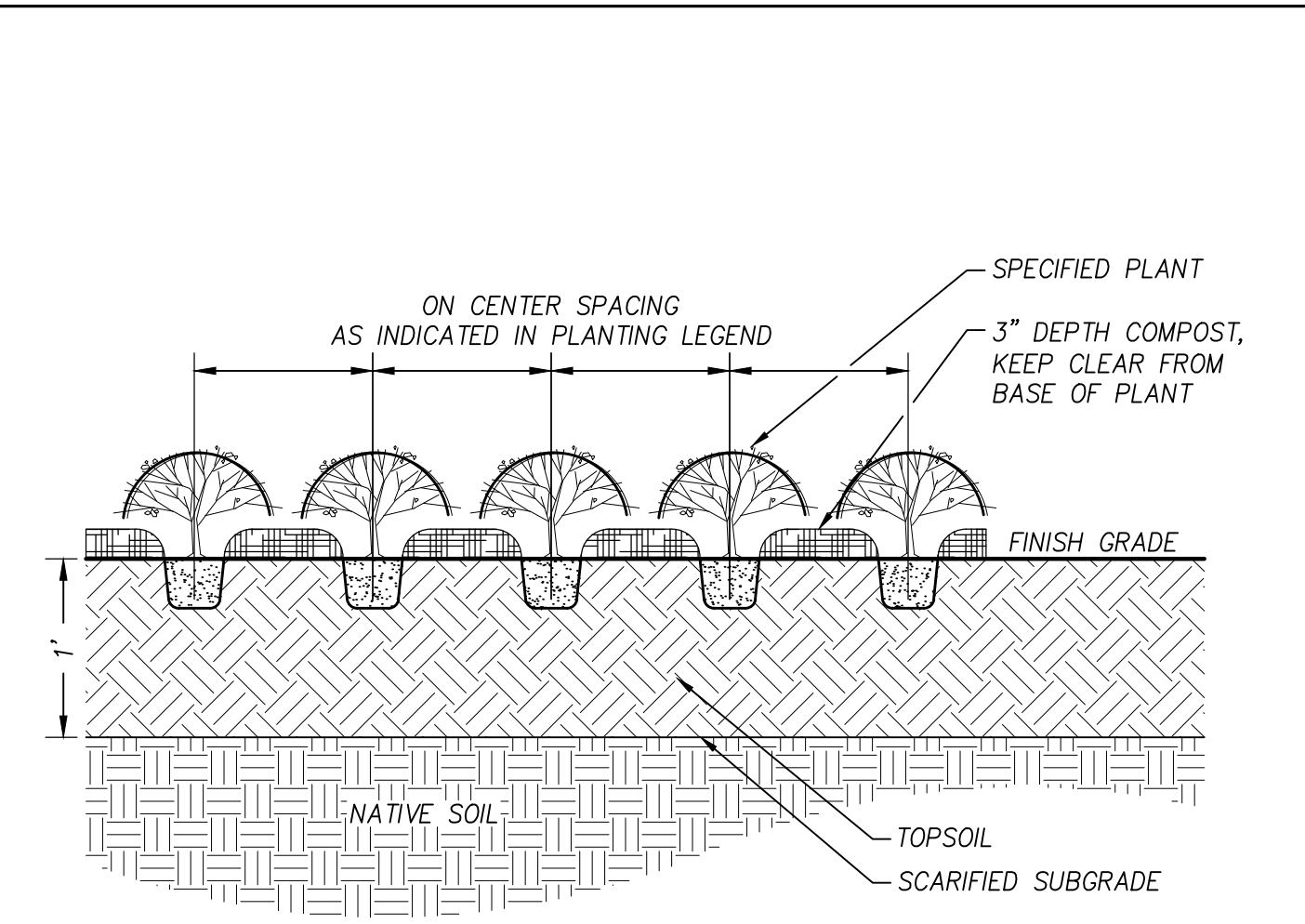
2 TREE STAKING
Plan
NOT TO SCALE



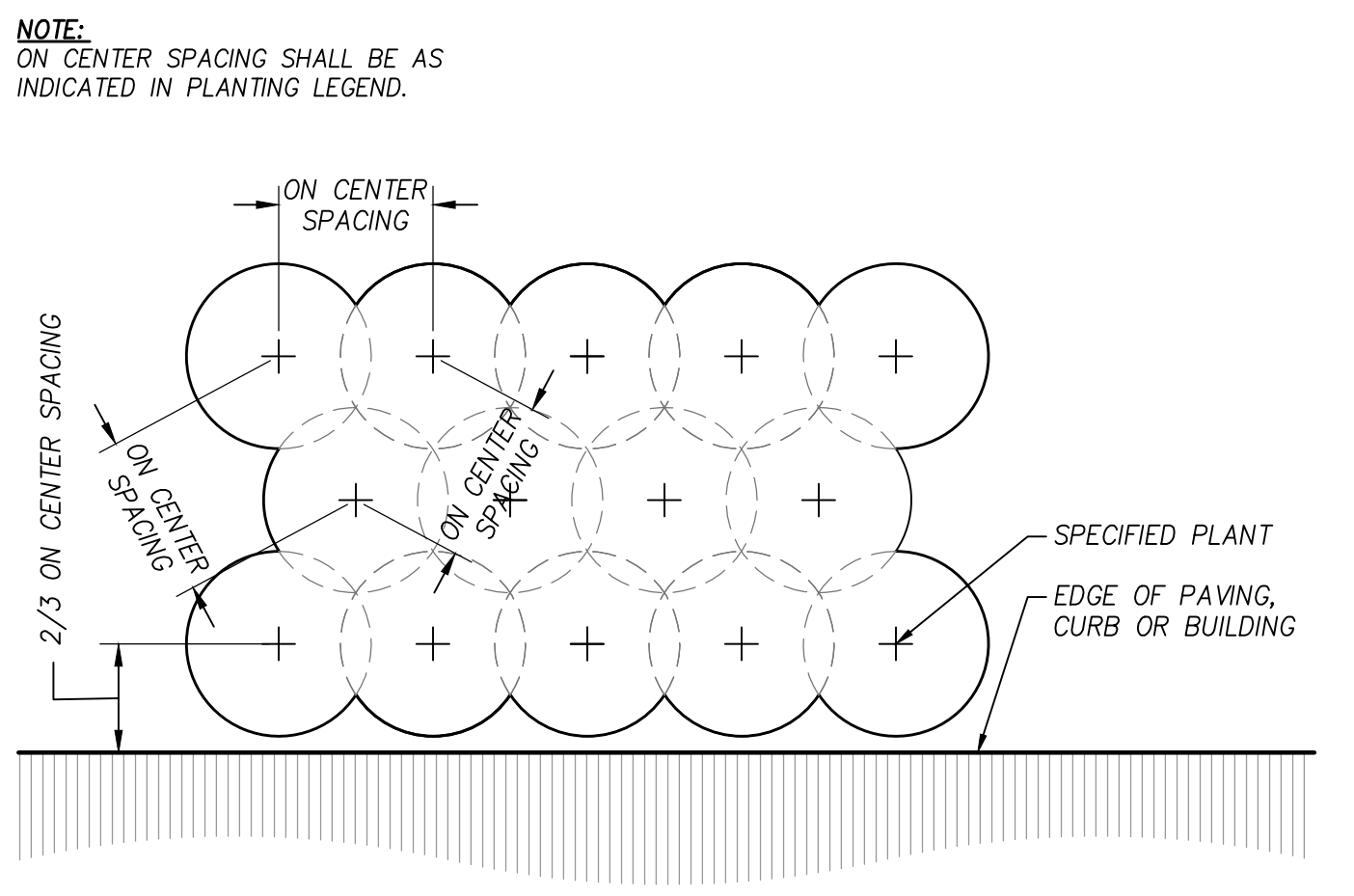
3 SHRUB PLANTING
Section
NOT TO SCALE



6 CONIFER TREE PLANTING
Section
NOT TO SCALE



4 GROUNDCOVER PLANTING
Section
NOT TO SCALE



5 TRIANGULAR SPACING
Plan
NOT TO SCALE

GENERAL PLANTING NOTES

- ALL CONSTRUCTION SHALL BE PERFORMED IN ACCORDANCE WITH CURRENT CITY OF PORTLAND STANDARDS AND OREGON BUILDING AND SPECIALTY CODES.
- INSTALL EROSION CONTROL SYSTEMS IN ACCORDANCE WITH CITY OF PORTLAND STANDARDS PRIOR TO SITE WORK AND LANDSCAPE INSTALLATION.
- CONTRACTOR SHALL MARK AND PROTECT ALL UTILITIES, SITE FEATURES, AND VEGETATION TO REMAIN IN PLACE.
- CONTRACTOR SHALL REMOVE ALL WEEDS AND INVASIVE SPECIES PRIOR TO PLANTING OR SEEDING.
- ALL DISTURBED AREAS SHALL BE SEEDED.
- PRIOR TO PLANTING, CONTRACTOR SHALL TEST ON-SITE SOILS FOR SOIL FERTILITY BY CERTIFIED TESTING LAB. IF NECESSARY, BACKFILL SOILS FOR TREE PITS, SHRUB AND GROUNDCOVER AREAS SHALL BE AMENDED AS RECOMMENDED BY SOIL ANALYSIS REPORT.
- CONTRACTOR TO INSTALL 3" LAYER OF COMPOST MULCH AT ZONE B TREE, SHRUB AND GROUNDCOVER AREAS.
- LANDSCAPE INSTALLATION SHALL INCLUDE PROVISION HAND WATERING DURING THE 2-YEAR ESTABLISHMENT PERIOD.
- PLANT MATERIAL INSTALLED SHALL CONFORM IN SIZE AND GRADE TO THE "AMERICAN STANDARD FOR NURSERY STOCK" CURRENT EDITION.
- LANDSCAPE CONTRACTOR WARRANTY ALL PLANTINGS FOR A 2-YEAR ESTABLISHMENT PERIOD. PLANTS SHALL BE IN SATISFACTORY HEALTH. LANDSCAPE CONTRACTOR SHALL REPLACE ALL DAMAGED, DEAD, OR DYING PLANTS COVERED BY WARRANTY WITHIN 30 DAYS OF INITIAL IDENTIFICATION OF CONDITION.
- STORMWATER FACILITY CONSTRUCTION TO BE INSPECTED BY BES CONSTRUCTION INSPECTOR.
- CONTRACTOR SHALL CONTACT BES CONSTRUCTION 48-HOURS PRIOR TO STARTING CONSTRUCTION ON THE STORMWATER FACILITY. ANY WORK ON THE FACILITY WITHOUT INSPECTIONS WILL BE REJECTED.
- CONTRACTOR SHALL PROVIDE BES CONSTRUCTION WITH TESTING DATA AS PER CITY OF PORTLAND STANDARD CONSTRUCTION SPECIFICATIONS SECTION 01040.13 - SOIL TESTING 14 DAYS PRIOR TO CONSTRUCTION.
- SEE CITY OF PORTLAND STANDARD CONSTRUCTION SPECIFICATIONS SECTION 01040.14(D) - STORMWATER FACILITY TOPSOIL.
- INSTALL TOPSOIL IN A MANNER THAT ENSURES ADEQUATE INFILTRATION. PLACE IN TWO EQUAL LIFTS. (IF NO DRAIN ROCK IS SPECIFIED, ADD THE FOLLOWING NOTE: ROTO-TILL THE FIRST LIFT INTO NATIVE SOIL.) LIFTS SHOULD NOT BE COMPACTED, BUT RATHER PLACED IN A MANNER TO REDUCE EXCESSIVE EROSION OR SETTLEMENT. LIFTS MAY BE LIGHTLY WATERED TO ENCOURAGE NATURAL COMPACTION OR, IF NECESSARY ROLLED WITH A WATER-FILLED LANDSCAPE ROLLER. SLIGHTLY OVERFILL THE FACILITY ABOVE PROPOSED FINISHED GRADE TO ACCOMMODATE NATURAL SETTLEMENT.
- AFTER THE STORMWATER FACILITY CONSTRUCTION STARTS, THE BES INSPECTOR IS REQUIRED TO CHECK ON THE PROGRESS OF THE JOB AS NECESSARY UNTIL THE FACILITY HAS BEEN PLANTED. CONSTRUCTION DELAY WILL RESULT IN ADDITIONAL FEES.
- FOLLOWING SWALE CONSTRUCTION, PLANTING SHALL OCCUR BETWEEN SEPTEMBER 1 AND NOVEMBER 1, OR BETWEEN FEBRUARY 1 AND APRIL 15. IF CONSTRUCTION IS COMPLETED DURING THESE TIME PERIODS, PLANTING SHALL OCCUR IMMEDIATELY. IF CONSTRUCTION IS COMPLETED OUTSIDE OF THESE TIME PERIODS, TOPSOIL SHALL BE COVERED ENTIRELY WITH NORTH AMERICAN GREEN C125BN EROSION CONTROL FABRIC, SECURED WITH 12" WOODEN ECOSTAKE (18" ON-CENTER). PLANTS SHALL BE INSTALLED THROUGH HOLES CUT IN THE EROSION CONTROL FABRIC, AND FABRIC SHALL BE RESTAKED SECURELY FOR STABILITY AND SOIL COVERAGE FOLLOWING PLANTING.
- CONTRACTOR TO PLACE EROSION CONTROL FABRIC OVER STORMWATER FACILITY AND SURROUNDING AREA TO PREVENT EROSION DURING WET WEATHER CONDITIONS. FABRIC SHALL BE 100% BIODEGRADABLE COIR FABRIC (NORTH AMERICAN C125BN OR APPROVED EQUAL).
- PLANTS SHALL BE INSPECTED AND APPROVED BY BES REVEGETATION PROGRAM PRIOR TO PLANTING. CONTACT THE BES PUBLIC WORKS INSPECTOR.

PLANTING DETAILS
RIVER CLUSTER DEVELOPMENT
MILWAUKIE, OREGON

Harper Houf Peterson
Righellis Inc.
 ENGINEERS * PLANNERS
 LANDSCAPE ARCHITECTS * SURVEYORS
 205 SE Spokane Street, Suite 200, Portland, OR 97202
 phone: 503.221.1131 www.hhp.com

REGISTERED
 LANDSCAPE ARCHITECT
 747
 JEFFERY P. CREEL
 OREGON
 05/13/11

| | | | | | | | |
|------------|-----|-------------------|-----|----------|-----|-------|-----------|
| DESIGNED: | JPC | DRAWN: | JPC | CHECKED: | KKV | DATE: | JUNE 2019 |
| APRIL 2019 | 1 | REVISED GRADING | | | | | |
| DATE | NO. | DESCRIPTION | | | | | |
| | | R E V I S I O N S | | | | | |

SHEET NO. **8**
 JOB NO. MSC-221