

Session Name: CM 9-29-2014 8-06 PM

Date Created: 9/29/2014 5:30:17 PM Active Participants: 12 of 12

Average Score: 0.00% Questions: 12

---

## Results By Question

1.) Foster a sense of place in Central Milwaukie; promote an identity and a vision. (Multiple Cho

Responses		
	Percent	Count
Strongly support	67%	8
Somewhat support	25%	3
Neutral	8%	1
Somewhat oppose	0%	0
Strongly oppose	0%	0
<b>Totals</b>	<b>100%</b>	<b>12</b>

2.) Maintain and improve Central Milwaukie as the City's primary commercial center. (Multiple C

Responses		
	Percent	Count
Strongly support	58%	7
Somewhat support	33%	4
Neutral	8%	1
Somewhat oppose	0%	0

Strongly oppose	0%	0
<b>Totals</b>	<b>100%</b>	<b>12</b>

**3.) Enhance the area's value to the community. (Multiple Choice)**

<b>Responses</b>		
	<b>Percent</b>	<b>Count</b>
Strongly support	64%	7
Somewhat support	9%	1
Neutral	27%	3
Somewhat oppose	0%	0
Strongly oppose	0%	0
<b>Totals</b>	<b>100%</b>	<b>11</b>

**4.) Enhance economic opportunities in the area. (Multiple Choice)**

<b>Responses</b>		
	<b>Percent</b>	<b>Count</b>
Strongly support	75%	9
Somewhat support	25%	3
Neutral	0%	0
Somewhat oppose	0%	0
Strongly oppose	0%	0
<b>Totals</b>	<b>100%</b>	<b>12</b>

**5.) Add residential uses to create a district that is lively and active. (Multiple Choice)**

<b>Responses</b>		
	<b>Percent</b>	<b>Count</b>
Strongly support	50%	6
Somewhat support	33%	4
Neutral	8%	1
Somewhat oppose	0%	0
Strongly oppose	8%	1
<b>Totals</b>	<b>100%</b>	<b>12</b>

**6.) Maintain an overall character complementary to and protective of surrounding neighborhoods**

<b>Responses</b>		
	<b>Percent</b>	<b>Count</b>
Strongly support	42%	5
Somewhat support	25%	3
Neutral	33%	4
Somewhat oppose	0%	0
Strongly oppose	0%	0
<b>Totals</b>	<b>100%</b>	<b>12</b>

**7.) Improve access to and within the area for pedestrians, cyclists and vehicles. (Multiple Choice)**

<b>Responses</b>		
	<b>Percent</b>	<b>Count</b>
Strongly support	58%	7

Somewhat support	25%	3
Neutral	17%	2
Somewhat oppose	0%	0
Strongly oppose	0%	0
<b>Totals</b>	<b>100%</b>	<b>12</b>

**8.) Facilitate development of the Murphy and McFarland opportunity sites. (Multiple Choice)**

<b>Responses</b>		
	<b>Percent</b>	<b>Count</b>
Strongly support	83%	10
Somewhat support	8%	1
Neutral	8%	1
Somewhat oppose	0%	0
Strongly oppose	0%	0
<b>Totals</b>	<b>100%</b>	<b>12</b>

**9.) Promote high-quality, human-scale urban design that is complementary to the surrounding a**

<b>Responses</b>		
	<b>Percent</b>	<b>Count</b>
Strongly support	58%	7
Somewhat support	25%	3
Neutral	17%	2
Somewhat oppose	0%	0

Strongly oppose	0%	0
<b>Totals</b>	<b>100%</b>	<b>12</b>

10.) Integrate a range of housing types into new mixed-use development. (Multiple Choice)

<b>Responses</b>		
	<b>Percent</b>	<b>Count</b>
Strongly support	42%	5
Somewhat support	17%	2
Neutral	25%	3
Somewhat oppose	17%	2
Strongly oppose	0%	0
<b>Totals</b>	<b>100%</b>	<b>12</b>

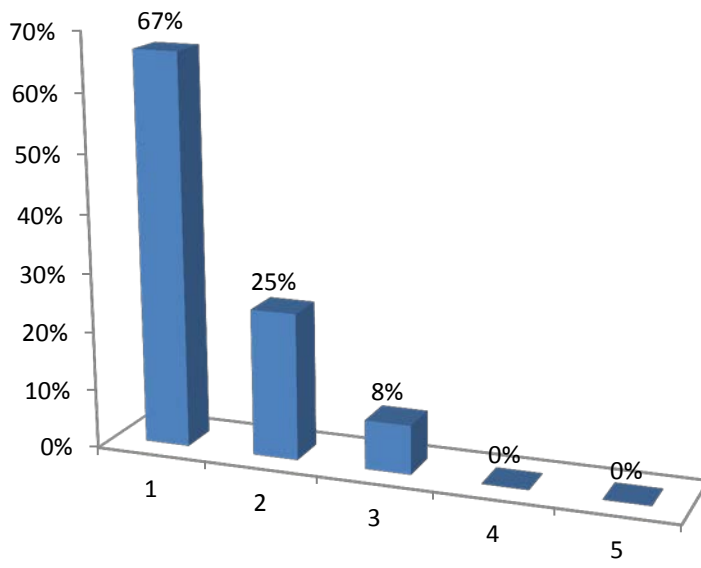
11.) Improve connectivity within the district with easily-accessible multimodal pathways that are

<b>Responses</b>		
	<b>Percent</b>	<b>Count</b>
Strongly support	55%	6
Somewhat support	9%	1
Neutral	27%	3
Somewhat oppose	9%	1
Strongly oppose	0%	0
<b>Totals</b>	<b>100%</b>	<b>11</b>

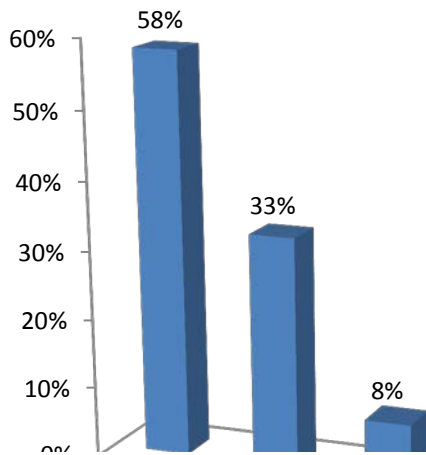
12.) Improve external connections to the district. (Multiple Choice)

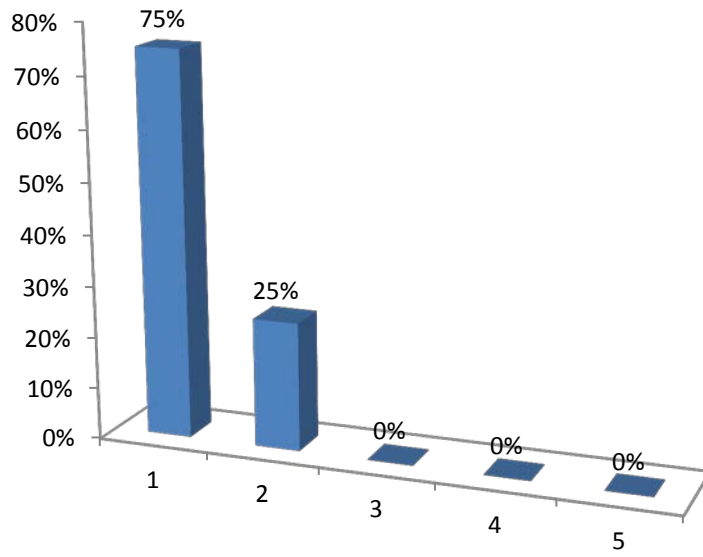
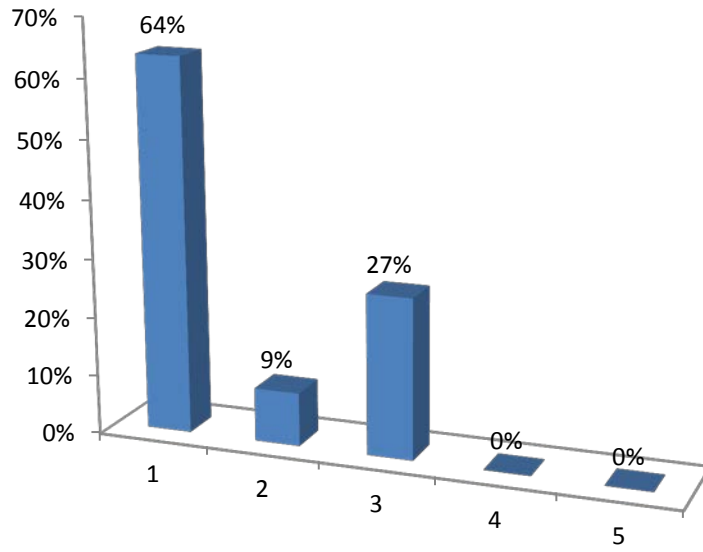
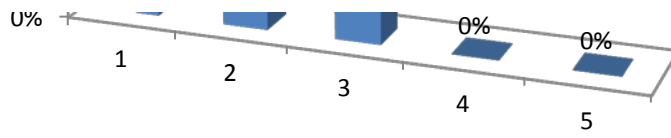
<b>Responses</b>		
	<b>Percent</b>	<b>Count</b>
Strongly support	58%	7
Somewhat support	8%	1
Neutral	33%	4
Somewhat oppose	0%	0
Strongly oppose	0%	0
<b>Totals</b>	<b>100%</b>	<b>12</b>

ice)

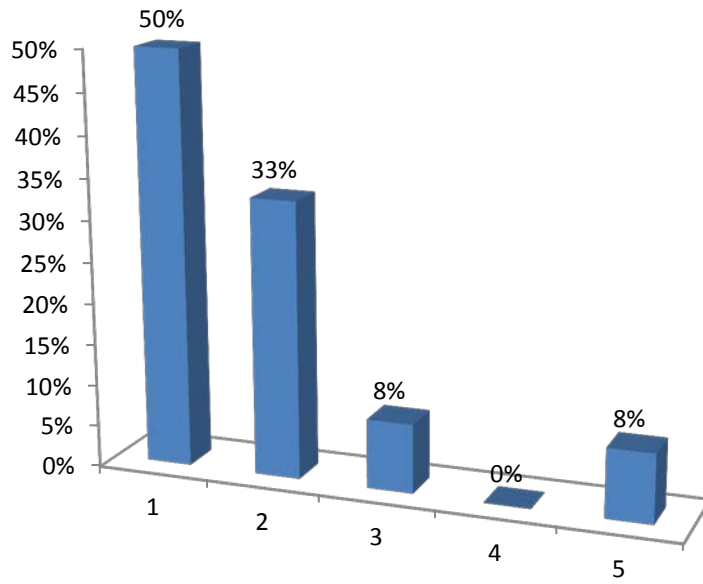


choice)

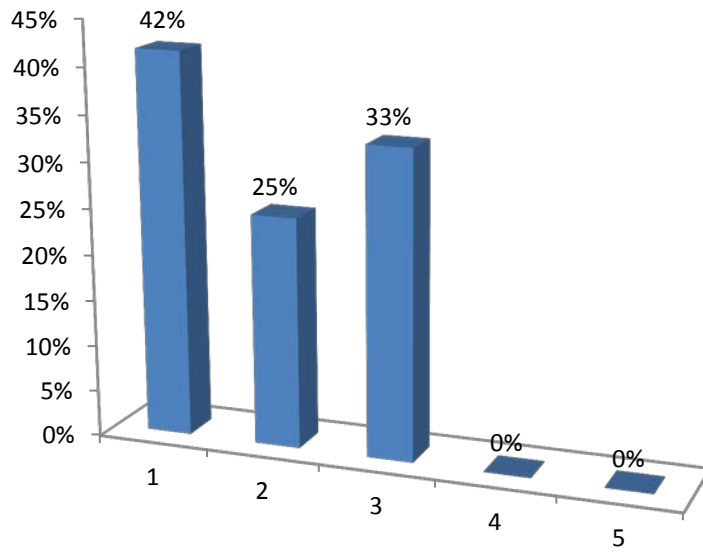




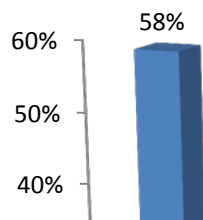


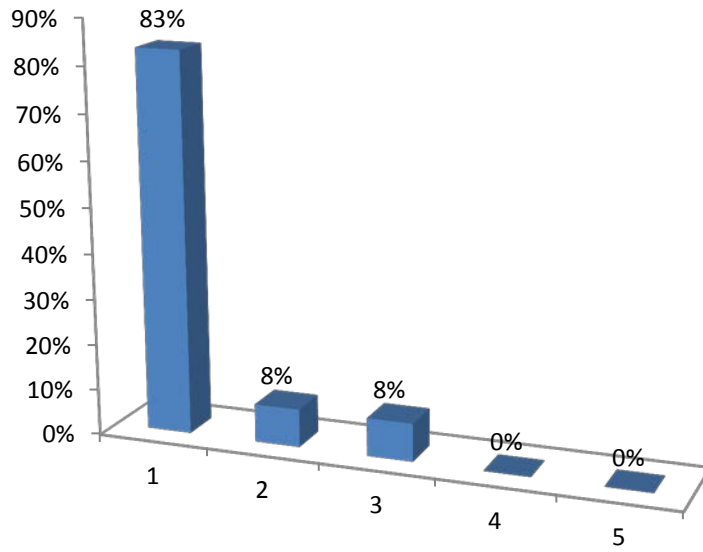
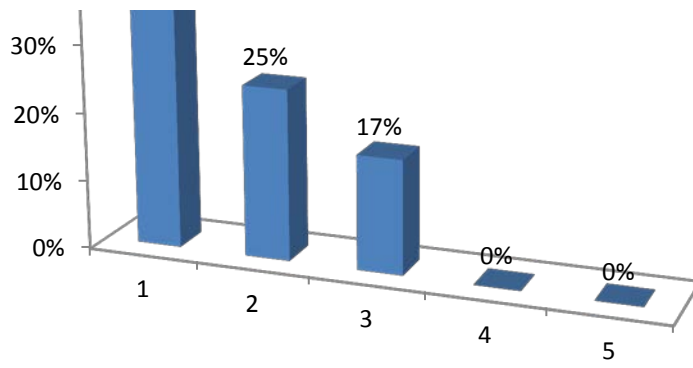


s. (Multiple Choice)

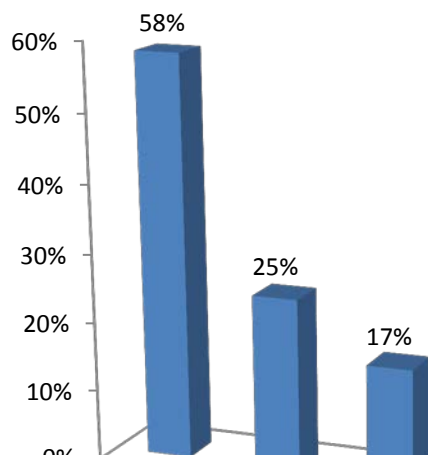


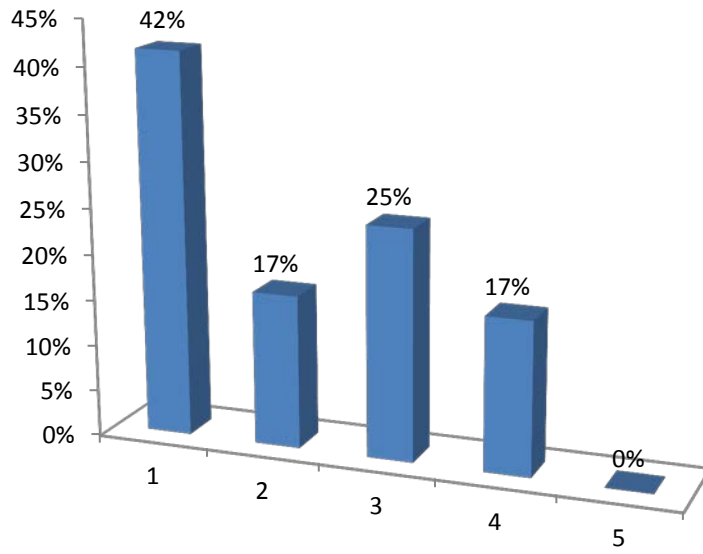
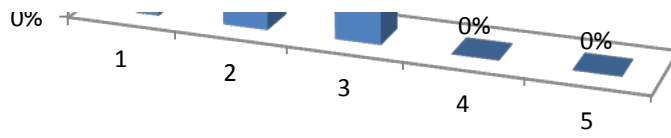
e)





rea. (Multiple Choice)





**safe and attractive. (Multiple Choice)**

