

# **North Clackamas Park North Side Master Plan**



**MILWAUKIE PLANNING COMMISSION  
TUESDAY, FEBRUARY 22, 2011**

**NORTH CLACKAMAS PARKS  
AND RECREATION DISTRICT**

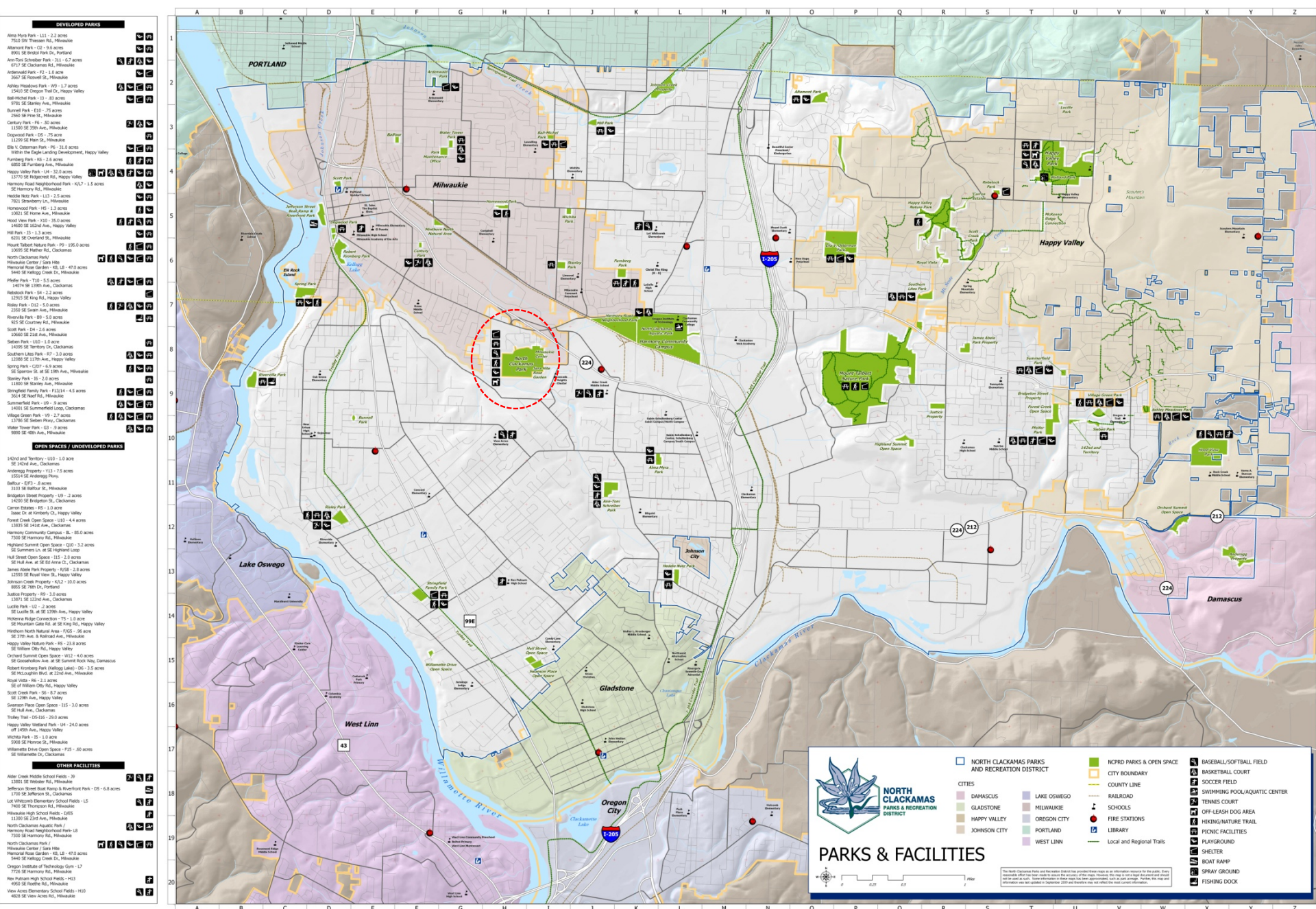
# Context - NCPRD



- Formed in 1990
- 114,000 residents
- Includes cities of Milwaukie and Happy Valley
- Numerous parks and facilities including;
  - North Clackamas Park and Milwaukie Center
  - Aquatic Park
- There are a variety of recreation and educational programs provided by the many divisions at NCPRD







# North Clackamas Park **Context**



- 47-acre park
- Largest community park in NCPRD
- In use for over 40 years
- Owned by Milwaukie, managed by NCPRD
- Camas Creek divides the park
  
- Background and Land Use History
  - July 27, 2010 Planning Commission Meeting

# North Clackamas Park South Side



- **Park elements:**
  - youth sports fields
  - equestrian facility
  - children's play area
  - Sara Hite Rose Garden
  - Milwaukie Center
  - parking
- **Completed in 2007/2008**
- **85,000 players and fans visited the park in 2010**
- **2009 ASA Girls' Fast pitch 12B Western National Championship**
- **Community events include weddings, March for Mutts, Movies in the park**





# North Clackamas Community Park - Conceptual Park Plan

City of Milwaukie Planning Commission - 2/11



## LEGEND

- Wetland Buffer Line - 50'
- Expanded Wetland Buffer Line - 70'
- 100 year flood line

# Why apply for approval of the Master Plan for the North Side of NCP?



- South side of park complete
- PARB and community requested NCPRD complete a North Side plan
- Direction by the City of Milwaukie



# Project Timing



## Public Involvement Notebook

- 12/07 – Final Master Plan Open House
- 1/08 – District Advisory Board review and support
- 2/08 – PARB review and support
- 5/09 – Milwaukie Title 13 interim rules established
- 4/10 – Application submitted to Milwaukie



# North Clackamas Park parking



## **Proposal:**

- **renovation and improvement of the North Side parking lot**

**NCP Parking Management Plan will remain in place**

**Details considered as part of any future land use application**

# Alternatives



- Mix of uses in the park
- Dog Park Planning
  - 1.45 acre facility, size will remain the same
  - Dog Park Working Committee
  - Move outside of riparian buffer of Mt. Scott Creek
  - Enhance with:
    - ✦ New fencing
    - ✦ Benches
    - ✦ Kiosk
    - ✦ Divided use areas
    - ✦ Double entrance gates
    - ✦ Additional vegetated screening
  - Code enforcement addresses concerns
- Southwest corner of the park





# Please Join Us for a Public Meeting

## Mt. Scott Creek Restoration Project

January 26th, 2011 from 6-7:30pm at the Milwaukie Center 5440 SE Kellogg Creek Drive Milwaukie OR in the Trillium Room

*Please join us to review the proposed restoration and habitat improvement projects for the section of Mt. Scott Creek that runs through North Clackamas Park.*

### PROJECT GOALS

- 1) Improve four to six instream and riparian areas along the creek for fish and wildlife health and to enhance ecological functions and diversity.
- 2) Provide watershed health awareness, community stewardship, educational opportunities and improve public access to nature.

### PROJECT BACKGROUND

Mt. Scott Creek joins Kellogg Creek southwest of North Clackamas Park. The 47-acre park is owned by the City of Milwaukie and maintained by the North Clackamas Parks and Recreation District (NCPRD). In 2009, Clackamas County Service District No. 1 (CCSD#1) completed a watershed action plan identifying the reach of Mt. Scott Creek flowing through North Clackamas Park as one of the highest priority areas for habitat improvements. CCSD #1 is applying for grant funding to implement the proposed natural resource improvements. The projects are in response to the watershed action plan and Oregon Department of Fish and Wildlife's habitat assessments of the creek. Separately, NCPRD has developed a concept plan for the north side of the park that includes additional park developments and natural resources improvements which are outside the scope of this project.

### SITE OPPORTUNITIES MAP



For more information go to:  
<http://www.riverhealth.org/>

### PROJECT TIMELINE

- Dec 2010 -Jan 2011 Preliminary Design
- Late Jan 2011 Submit Metro Grant Application
- Jun 2011 Complete final design and permitting
- Jul-Sept 2011 Implement restoration measures
- Oct 2011- Mar 2012 Conduct volunteer restoration events in riparian areas





# North Clackamas Community Park - Conceptual Park Plan

City of Milwaukie Planning Commission - 2/11



## LEGEND

- Wetland Buffer Line - 50'
- Expanded Wetland Buffer Line - 70'
- 100 year flood line