



PORTLAND-MILWAUKIE
LIGHT RAIL PROJECT

City of Milwaukie: System's Buildings & Transit Station Amenities



Robert Hastings,
FAIA
Agency Architect
TriMet

TriMet Capital
Projects



Systems Buildings

- ❑ Monroe Substation
- ❑ Lake Road Signal/Communications
 - Basis of Design: Modeled after Interstate MAX
 - Galvalume Metal Roof
 - Honed face CMU
 - Painted Doors/frames
 - Metal halide lighting





Systems Buildings

- ❑ Alternative Proposal
 - Adjusted scale
 - Provide for solar or eco-roof initiatives
 - Attractive, graffiti resistant materials
 - Provide for green-screen initiative
-



Systems Buildings

- Alternative Proposal
 - Funding for initiatives being pursued
 - solar or eco- roof initiatives
 - green-screen initiative
-



Systems Buildings

□ Alternative Proposal

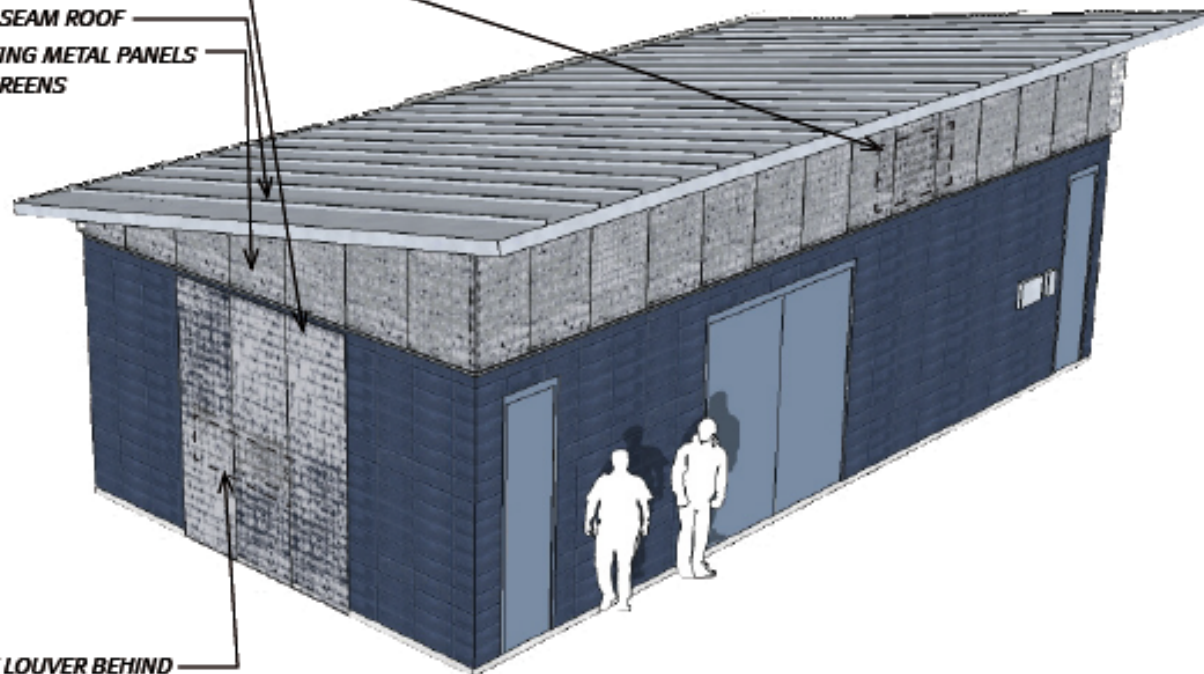
AIR EXHAUST LOUVER BEHIND

CNC LASER-CUT METAL SCREENS

STANDING SEAM ROOF

*INTERLOCKING METAL PANELS
BEHIND SCREENS*

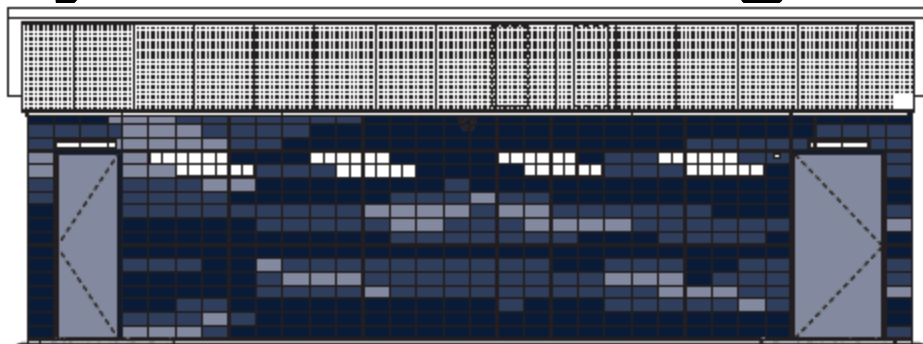
AIR INTAKE LOUVER BEHIND



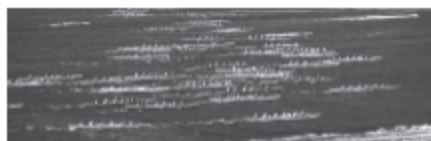
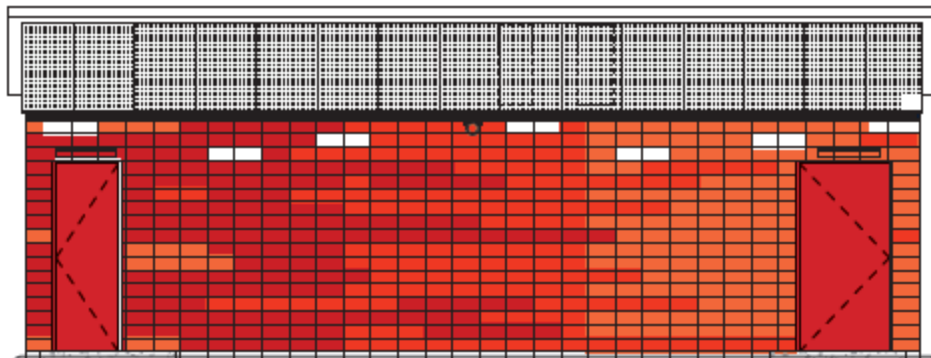


Systems Buildings

- ❑ Alternative Proposal
 - Glazed Tile/CMU
 - Inspired by Willamette River valley
 - Movement & Activity
 - Pixilated, abstractions



OPTION A1: RIVER CITY

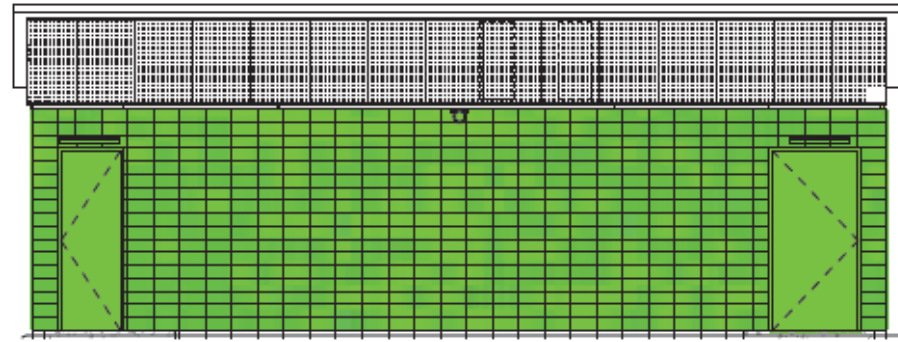


OPTION A2: RACING CURRENTS



Systems Buildings

- ❑ Alternative Proposal
 - Glazed Tile/CMU
 - Inspired by Willamette River valley
 - Movement & Activity
 - Pixilated, abstractions



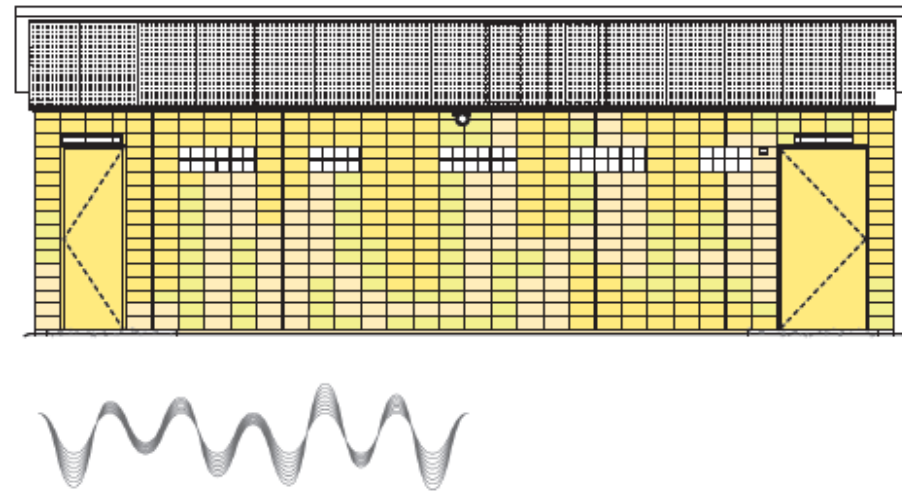
OPTION A3: LANDSCAPES



Systems Buildings

□ Alternative Proposal

- Glazed Tile/CMU
- Glass Block patterns
- Inspired by functional requirements
- Signal Bldg- electric current waves
- Substation- electric current pattern
- Pixilated, abstractions



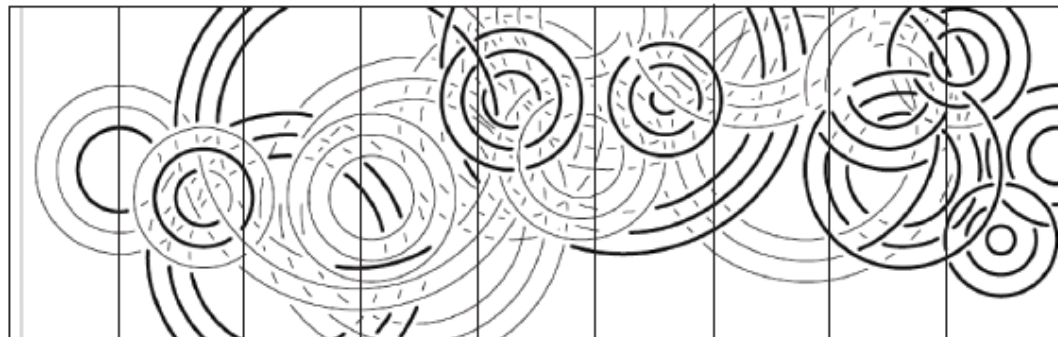
OPTION B: SINE WAVES



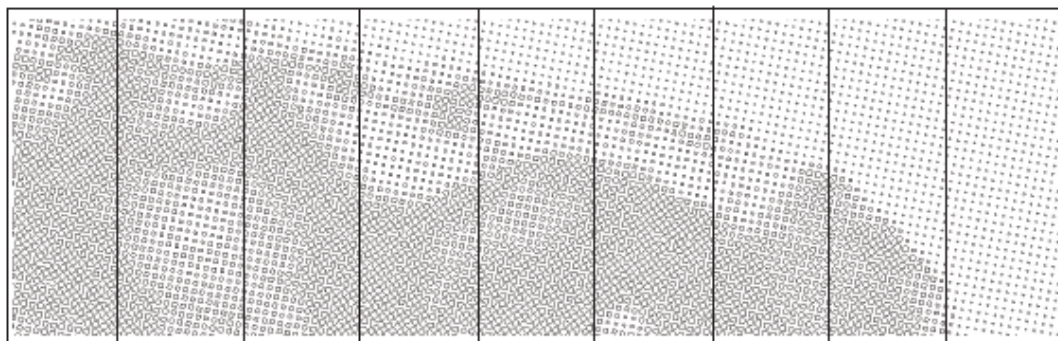
Systems Buildings

□ Alternative Proposal

- Green-screen
- 16 gauge, CNC
- 60% open area
- Patterns inspired by nature and technological functions



SAMPLE A: RAINDROPS ALGORITHM



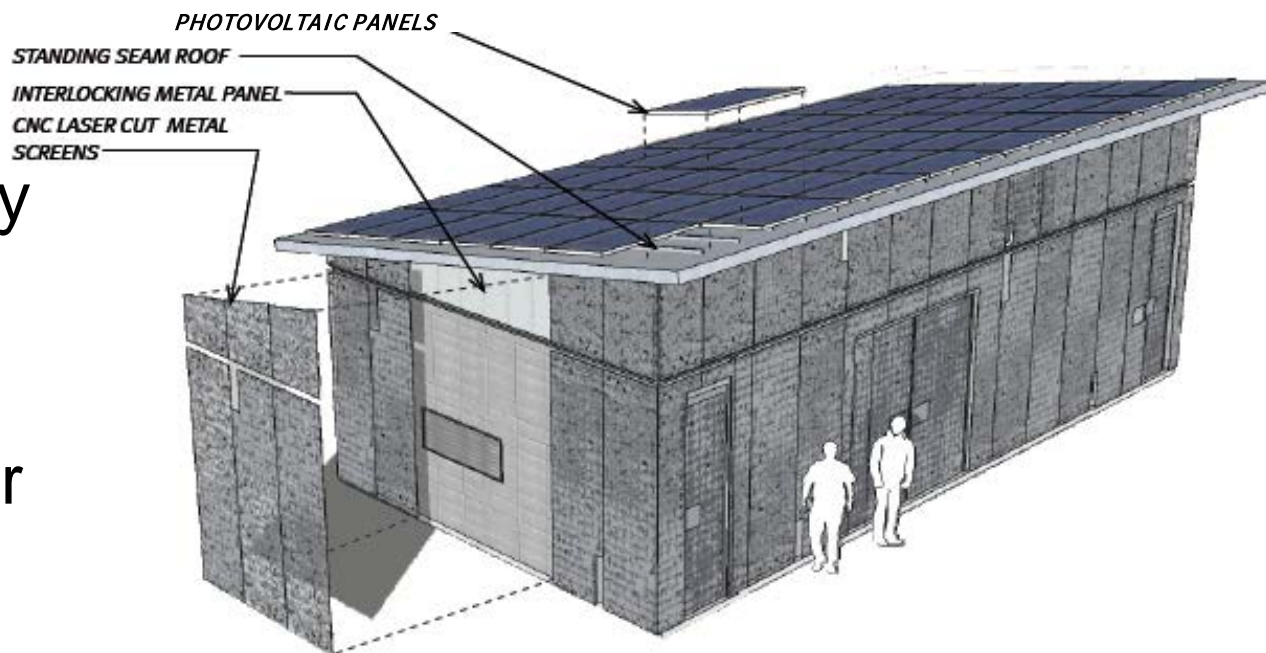
SAMPLE B: SOLAR WIND ALGORITHM



Systems Buildings

□ Alternative Proposal

- Solar Energy Initiative
- PV panels
- Offset power use

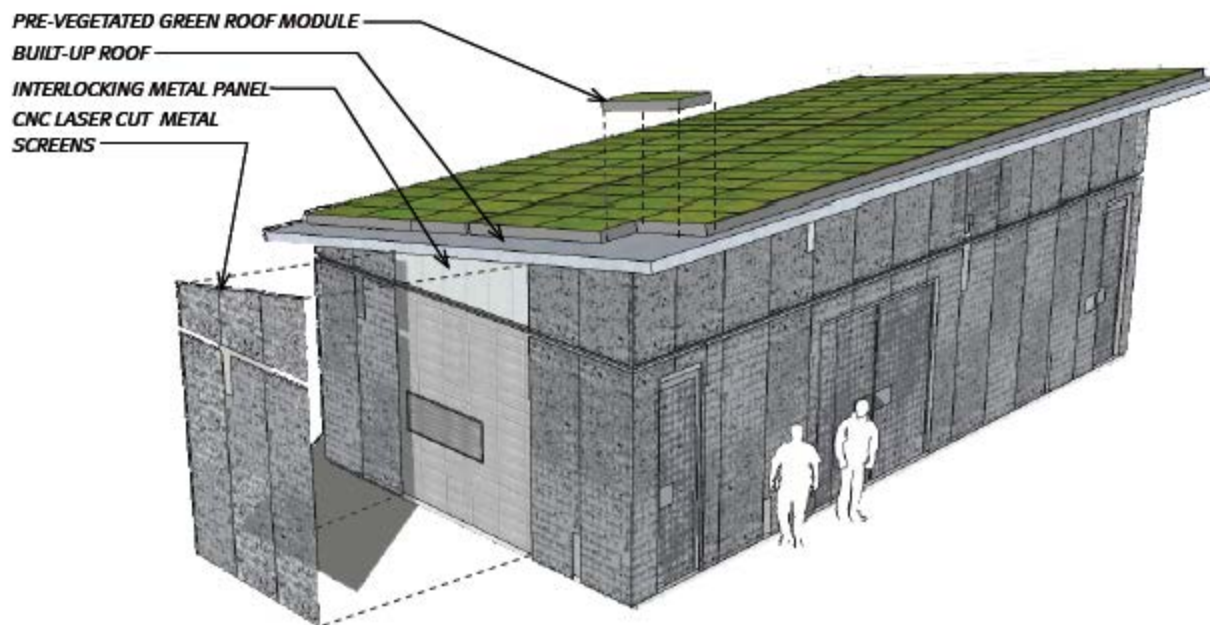




Systems Buildings

□ Alternative Proposal

- Eco-roof
- Treats rain water
- Green-screen option



TPSS WITH MODULAR GREEN ROOF AND CNC CUT METAL PANELS



PORTLAND-MILWAUKIE
LIGHT RAIL PROJECT

Station Transit Amenities

- ❑ Glass roof shelter
- ❑ Windscreen and seating

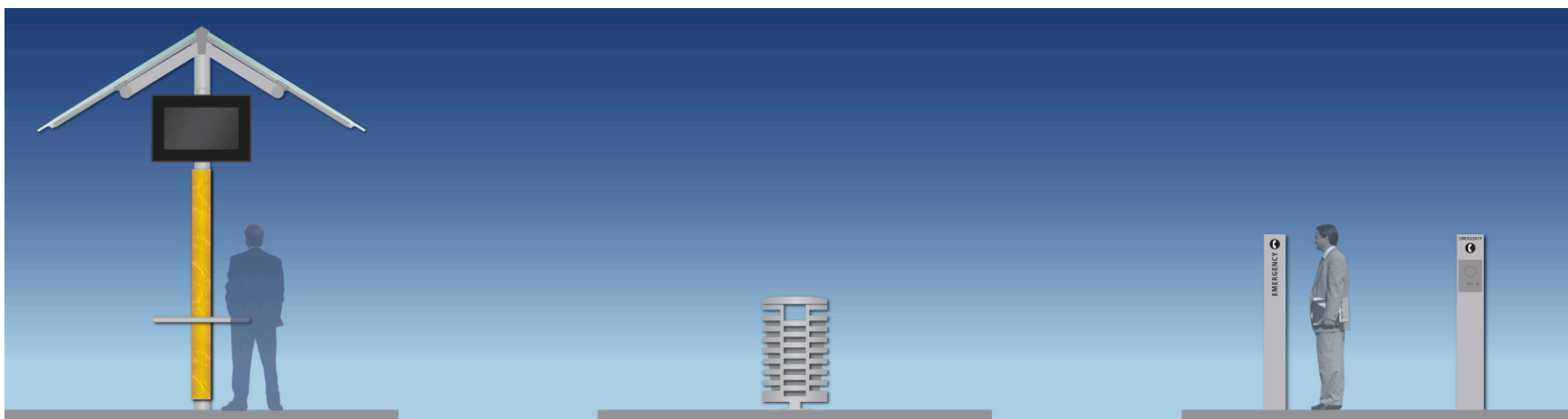


Note: Milwaukie station art program will provide actual art treatment



Station Transit Amenities

- ☐ Glass roof shelter with transit tracker
- ☐ Waste receptacle
- ☐ Emergency phone device





PORTLAND-MILWAUKIE
LIGHT RAIL PROJECT

Station Transit Amenities

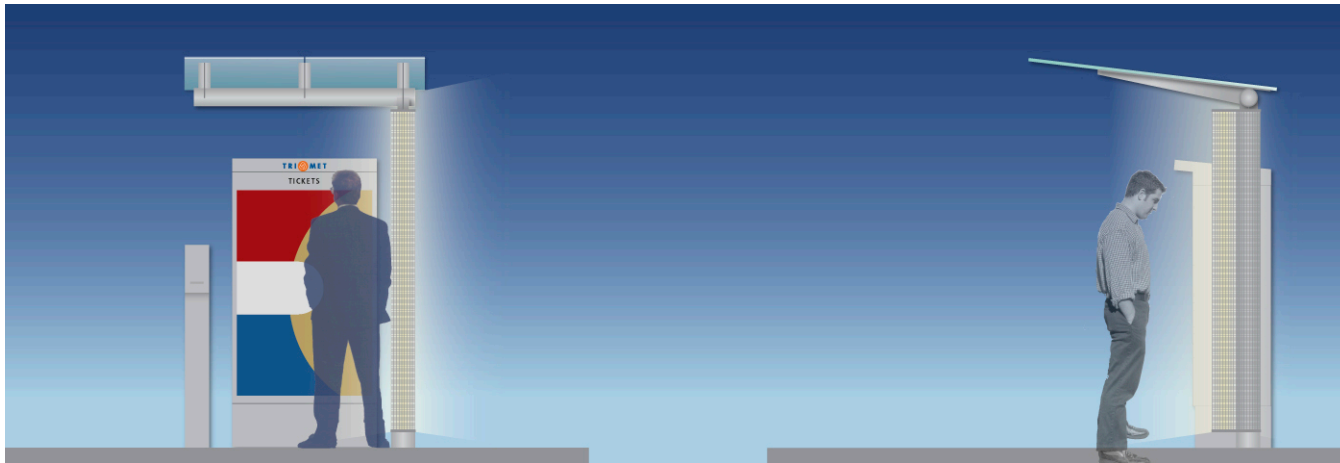
- Light poles; with CCTV and signage





Station Transit Amenities

- ☐ Glass roof canopy
- ☐ Ticket vending machine





PORTLAND-MILWAUKIE
LIGHT RAIL PROJECT

Questions?
