



DR-11-01

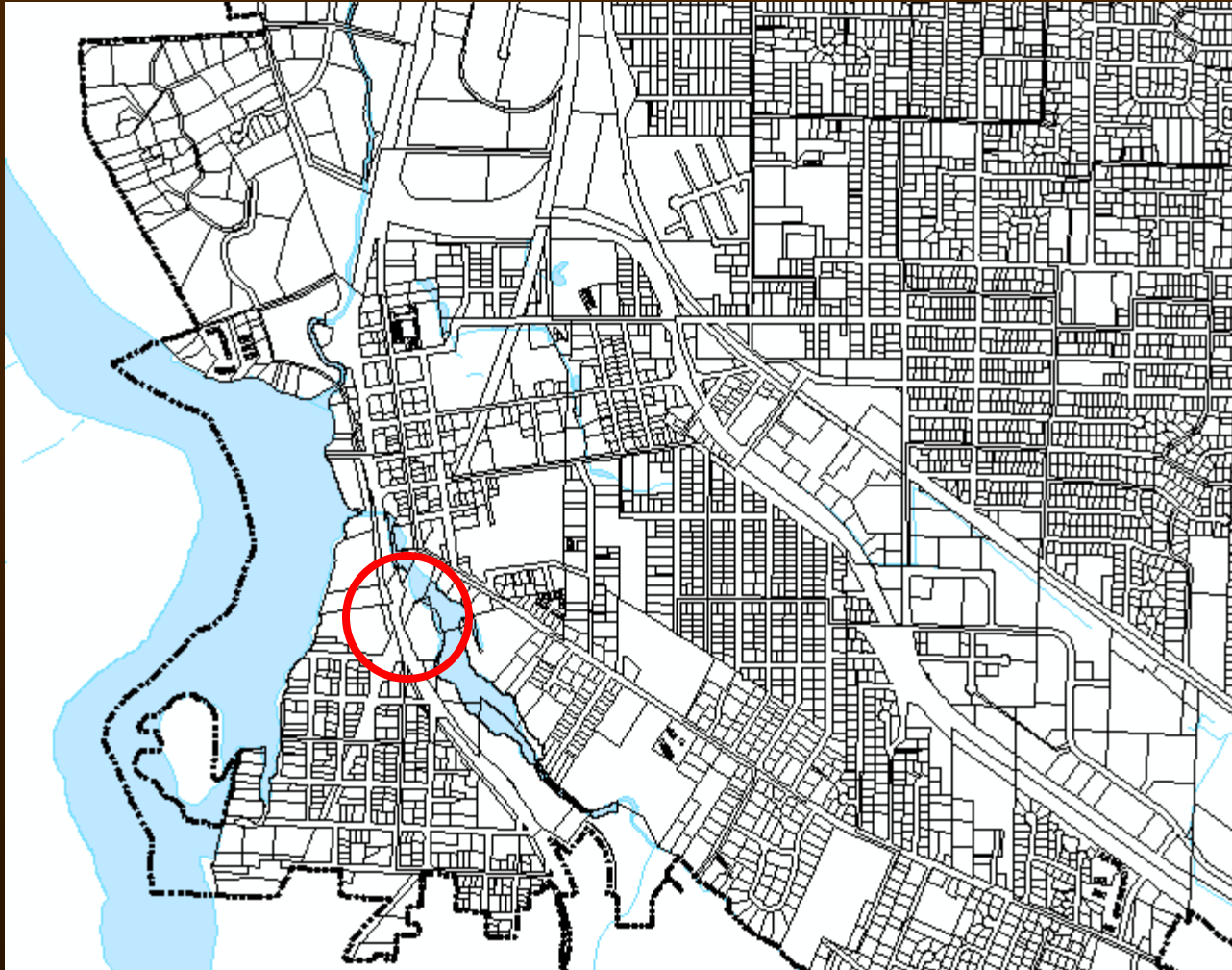
Kellogg Bridge Design Review

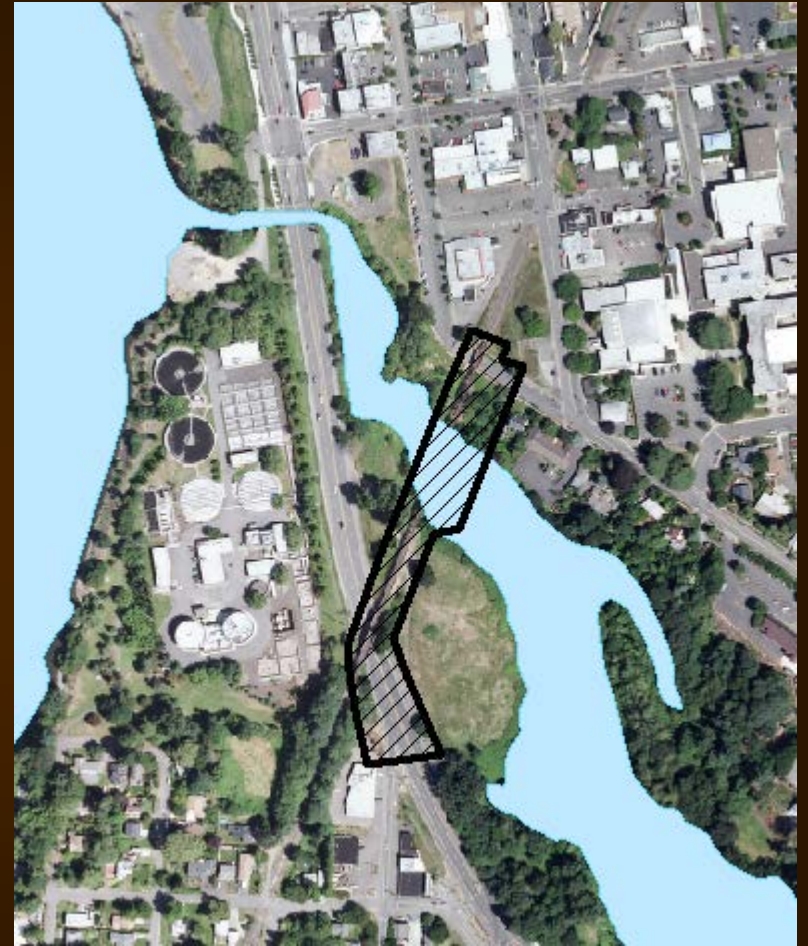
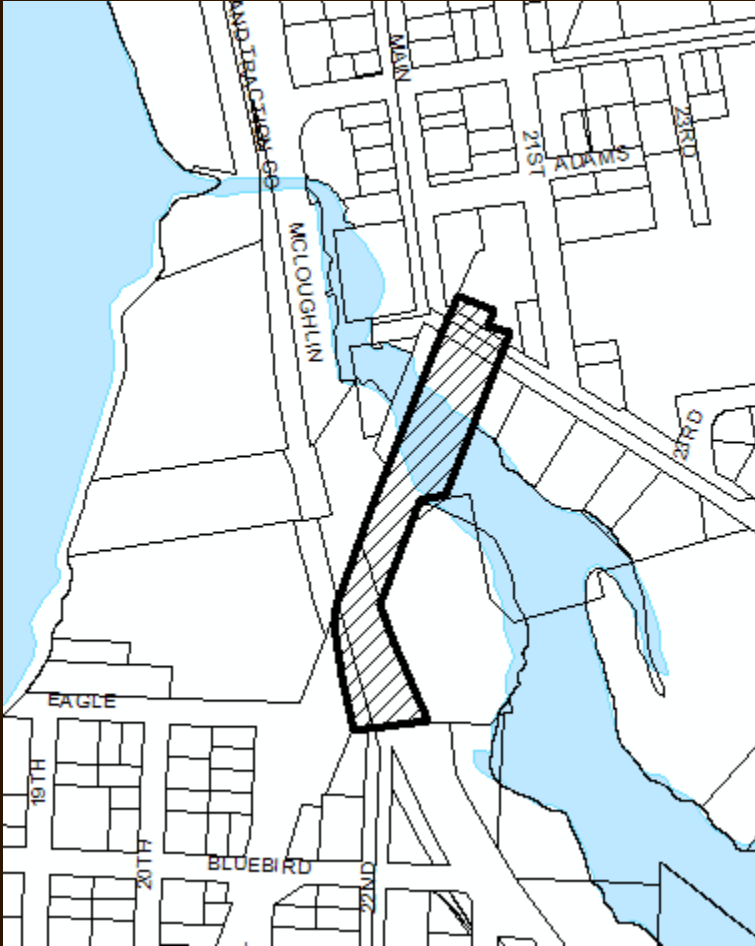
Presented to Milwaukie Design & Landmarks Committee

Susan P Shanks, Senior Planner

Oct 17, 2011

Location





Proposal

- Jump span over Lake Rd
- Clear span bridge over Kellogg Lake
- Clear span bridge over McLoughlin
- Pedestrian bridge design



Land Use Review

- 2008 Land Use Final Order (LUFO)
 - Approval of location of PMLR alignment
 - Subject to Milwaukie standards
- 2011 City review
 - Willamette Greenway
 - Community Service Use
 - Habitat Conservation & Water Quality
 - Design Review



Design Review

Development & Design Standards

- Walls and Vegetation

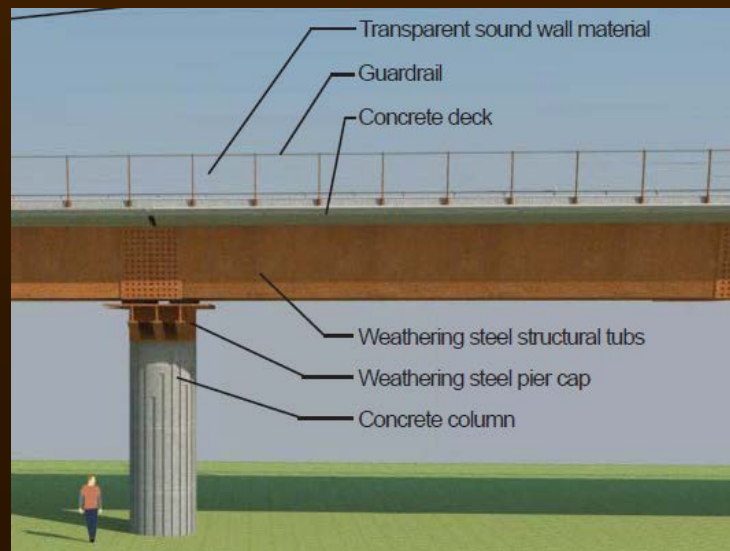
Design Guidelines

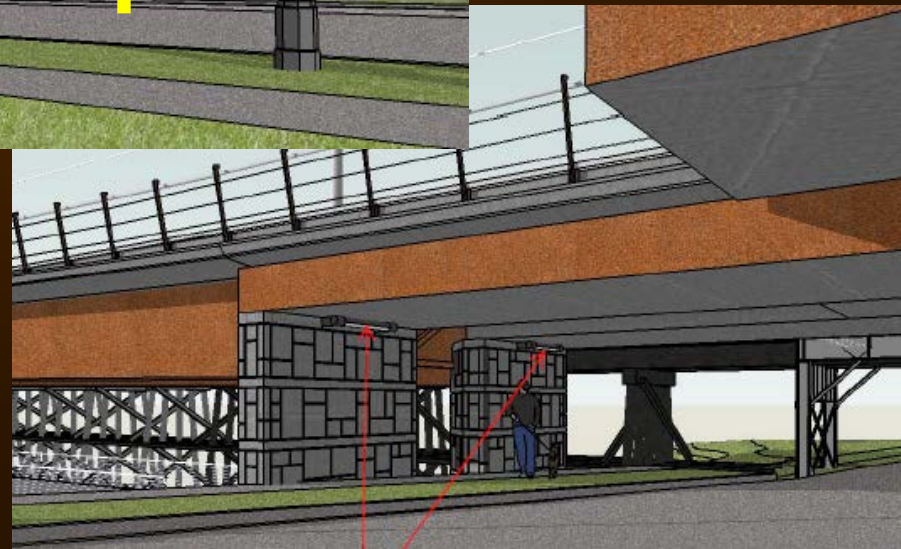
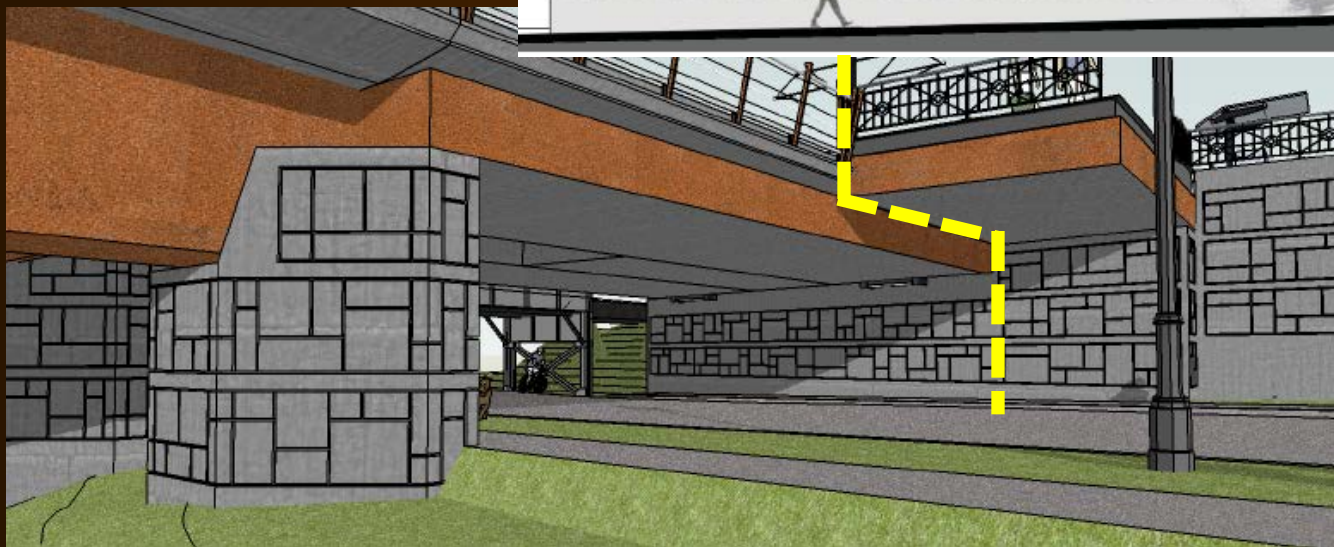
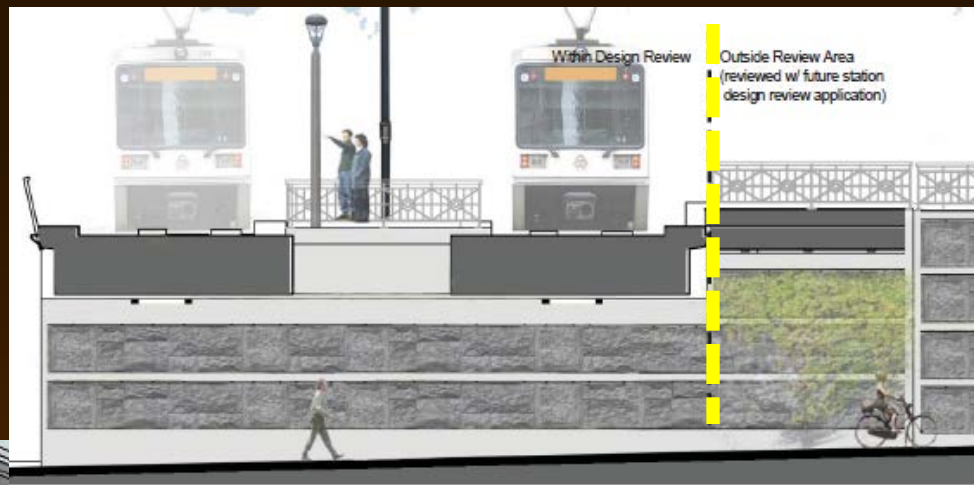
- Milwaukie Character
- Pedestrian Emphasis
- Architecture
- Lighting



Key Issues

- Jump span lighting
- Jump span wall & column treatments
- Column treatments





Proposed Conditions

JUMP SPAN LIGHTING

- Provide uniform and comfortable lighting of jump span “room”
- Coordinate with and enhance wall treatments

Design Guideline: EXTERIOR LIGHTING



Proposed Conditions

JUMP SPAN WALL TREATMENTS

- Provide stacked ashlar stone formliner that hides seams
- Provide visual interest in the pedestrian zone (6' and below)
- Incorporate CPTED principles around jump span columns

Design Guidelines: WALLS, CONTRAST,
PEDESTRIAN ENVIRONMENT



Proposed Conditions

COLUMN TREATMENTS

- Provide details that show how treatments support bridge design and add visual interest in the pedestrian zone

Design Guideline: CONTRAST, PEDESTRIAN ENVIRONMENT



Comments

Oct 17 DLC

- Island Station resident
- City staff as project partner

Nov 8 PC hearing

- ODFW
- Historic Milwaukie & Island Station residents



Staff Recommendation

- Compliance with standards
- Substantial consistency with guidelines
- Approvable with appropriate conditions
 - Jump span lighting
 - Jump span wall & column treatments
 - Column treatments



Decision Making Options

1. Recommend approval with recommended findings and conditions of approval.
2. Recommend approval with revised findings and/or conditions or approval.



Next Steps

- Kellogg Bridge hearing
Nov 8 2011 (PC)
- Light Rail Station land use review
2012 (DLC & PC)
- Ped bridge connections future land use
review
(DLC & PC)



Thank you

Any Questions?

