

# Milwaukie Riverfront Park

Design Review  
Perspective and Material  
Examples -  
November 3, 2009





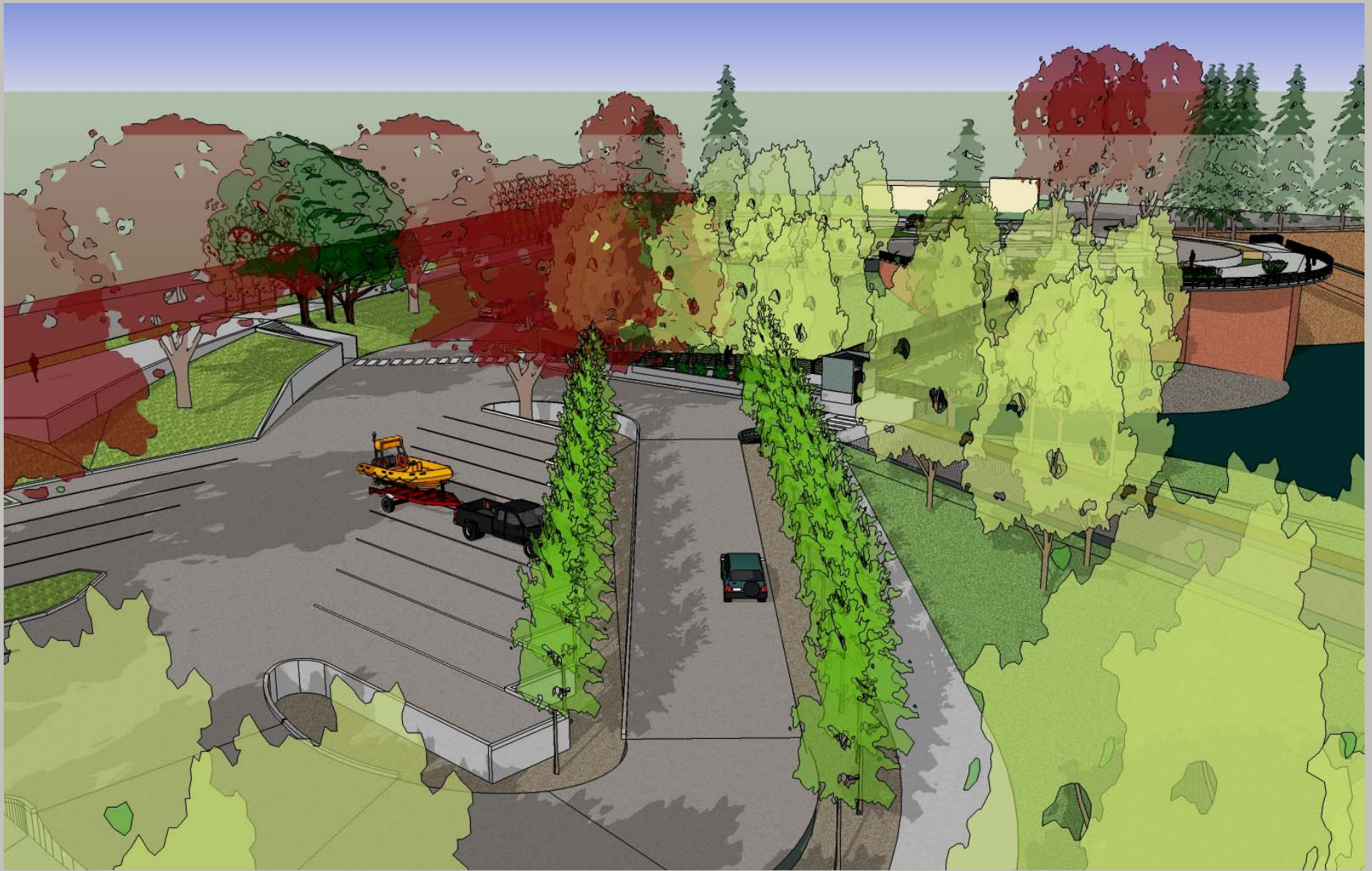


Sand-blasted concrete plaza

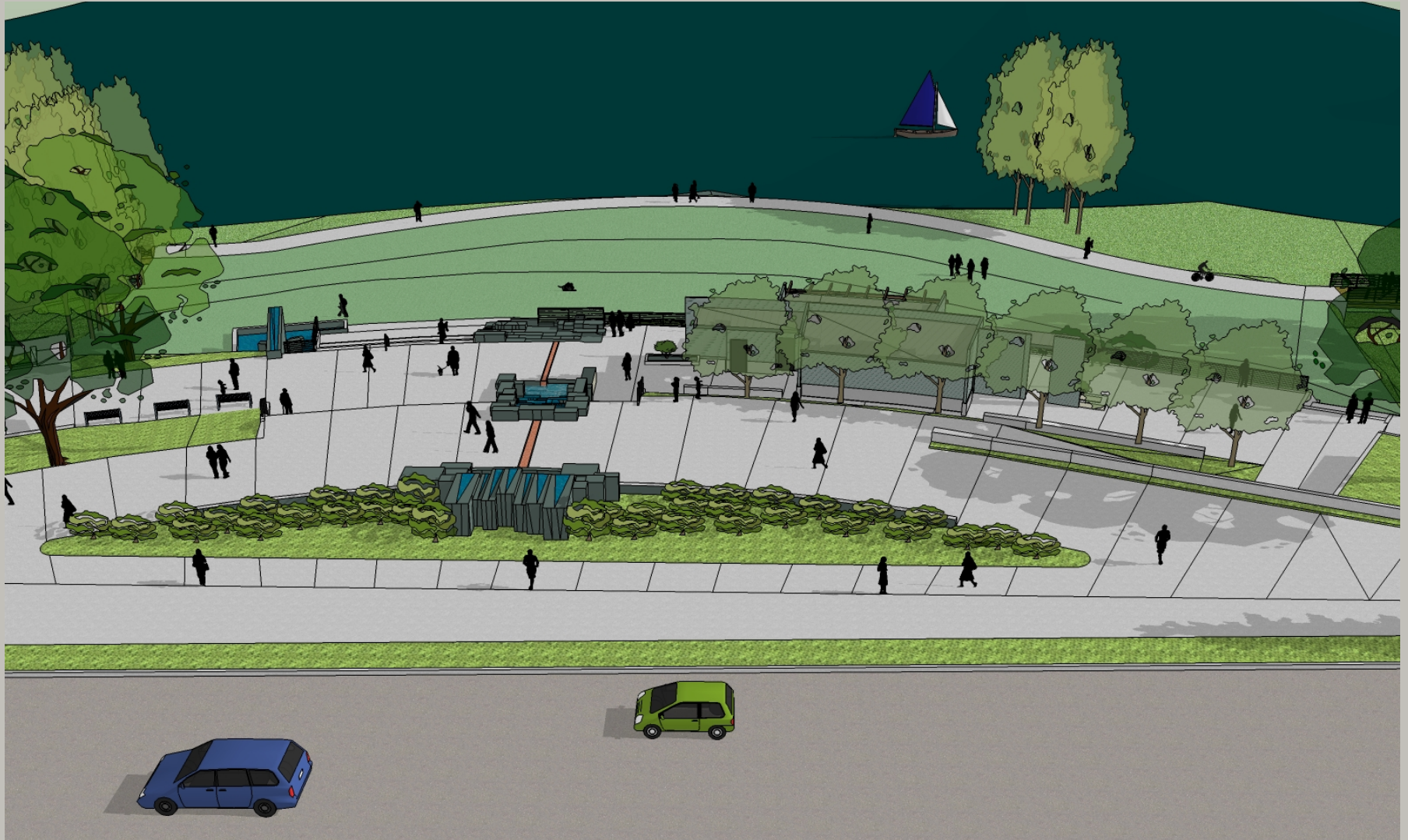
Railing throughout: Ipe handrail with black powder coated posts and stainless steel cable rails







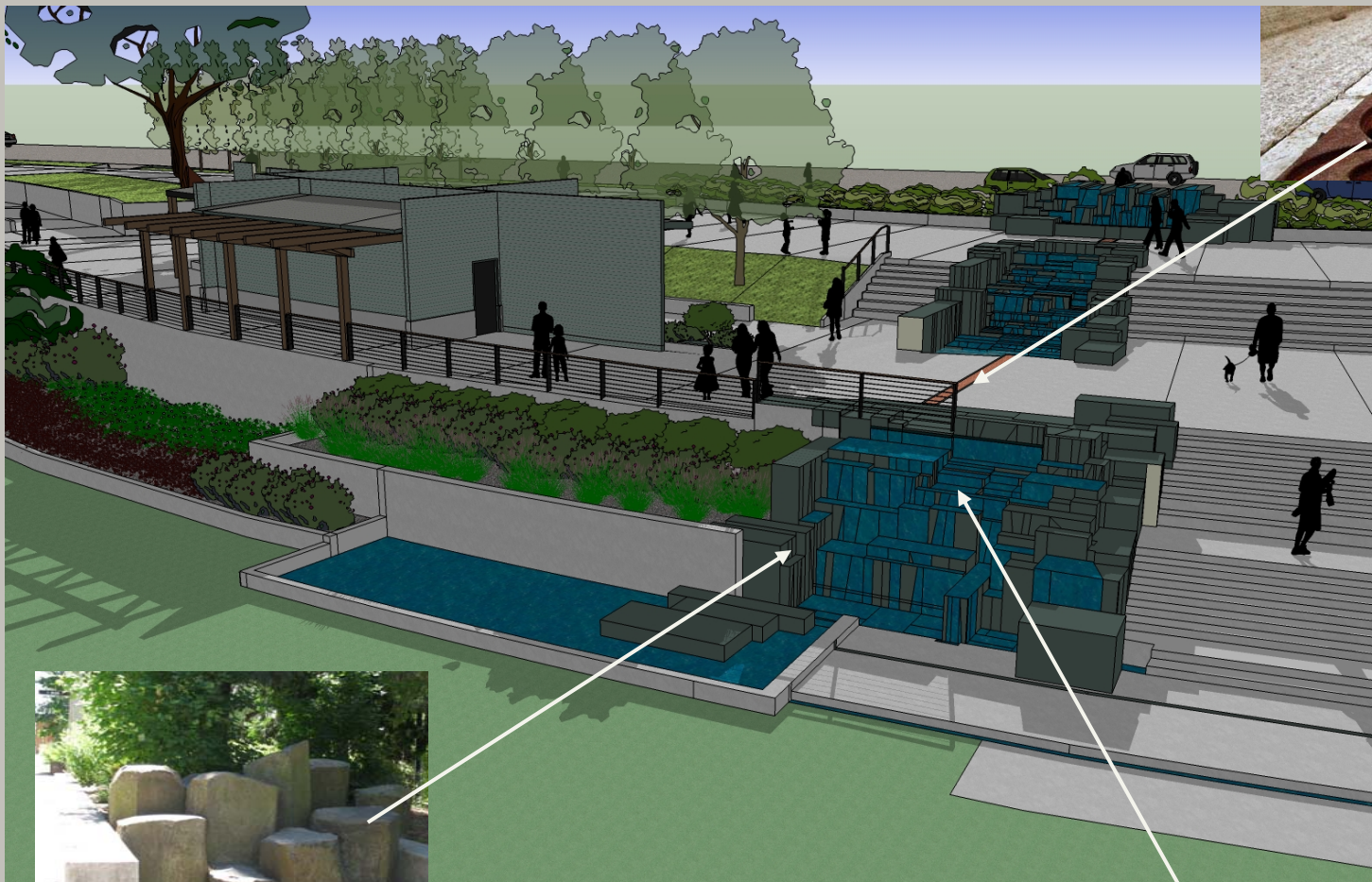












Water flows from top terrace of plaza- flows across plaza sections in decorative metal-covered trenches



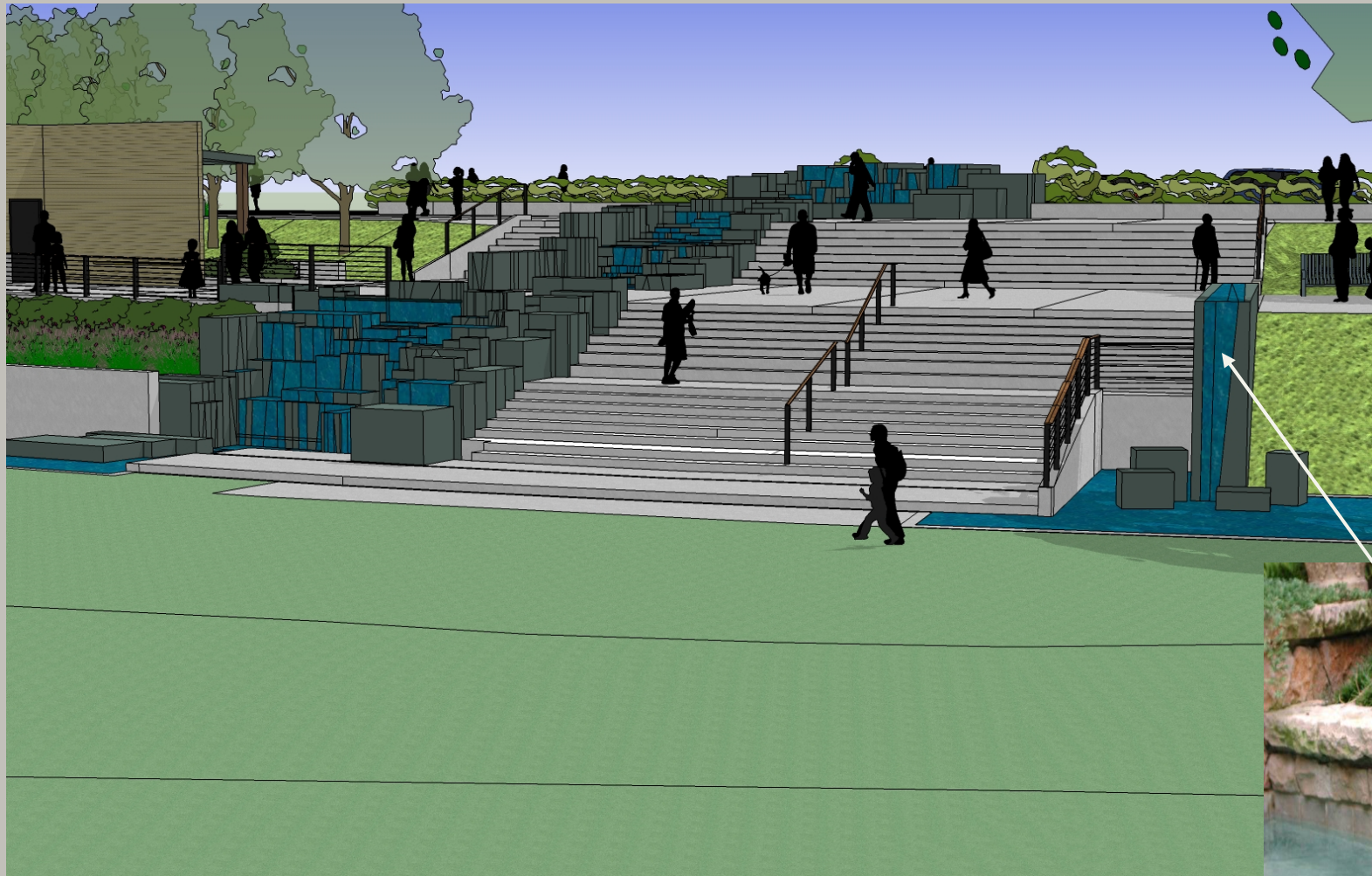
Water feature- water cascades over basalt columns and slabs in thin sheets

Water collects in shallow pools at lawn level on both sides of steps

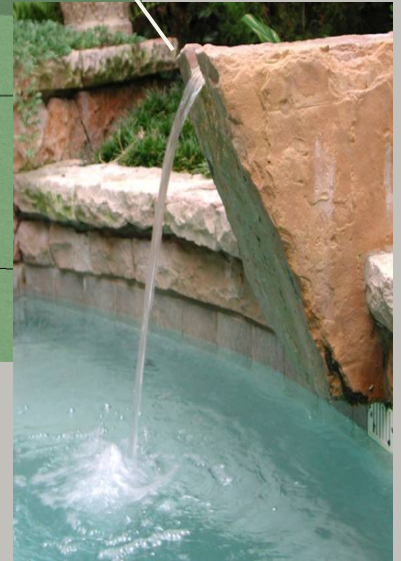


plaza details





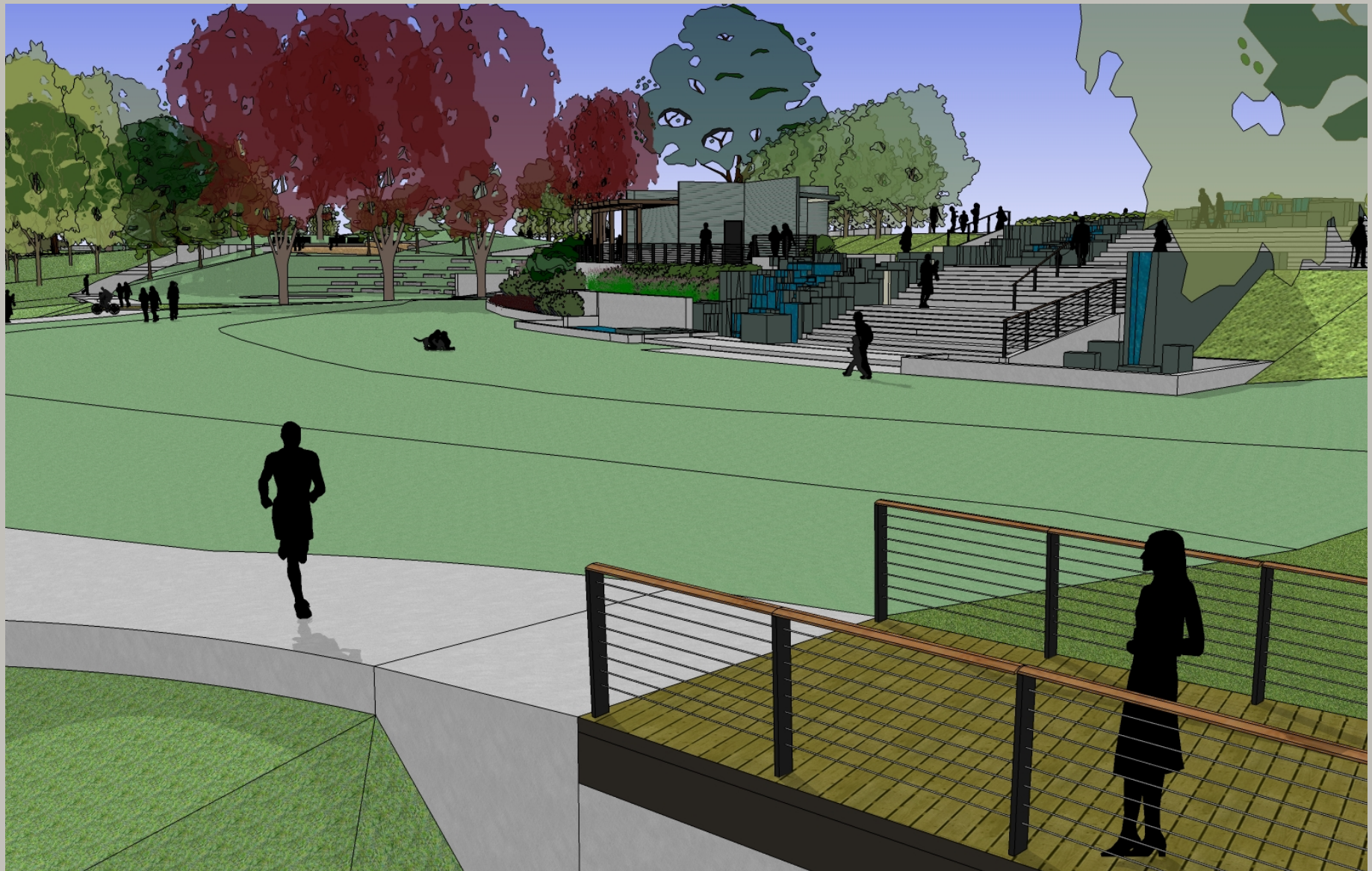
- Basalt monolith etched at top for water flow

















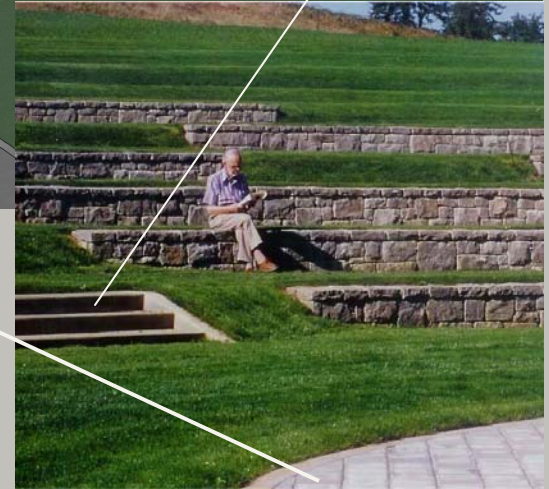








- Large columnar basalt (approx. 2'x3'x8') laid into sculpted, stepped lawn



- Grass between concrete steps and basalt
- Mortared cobblestone stage

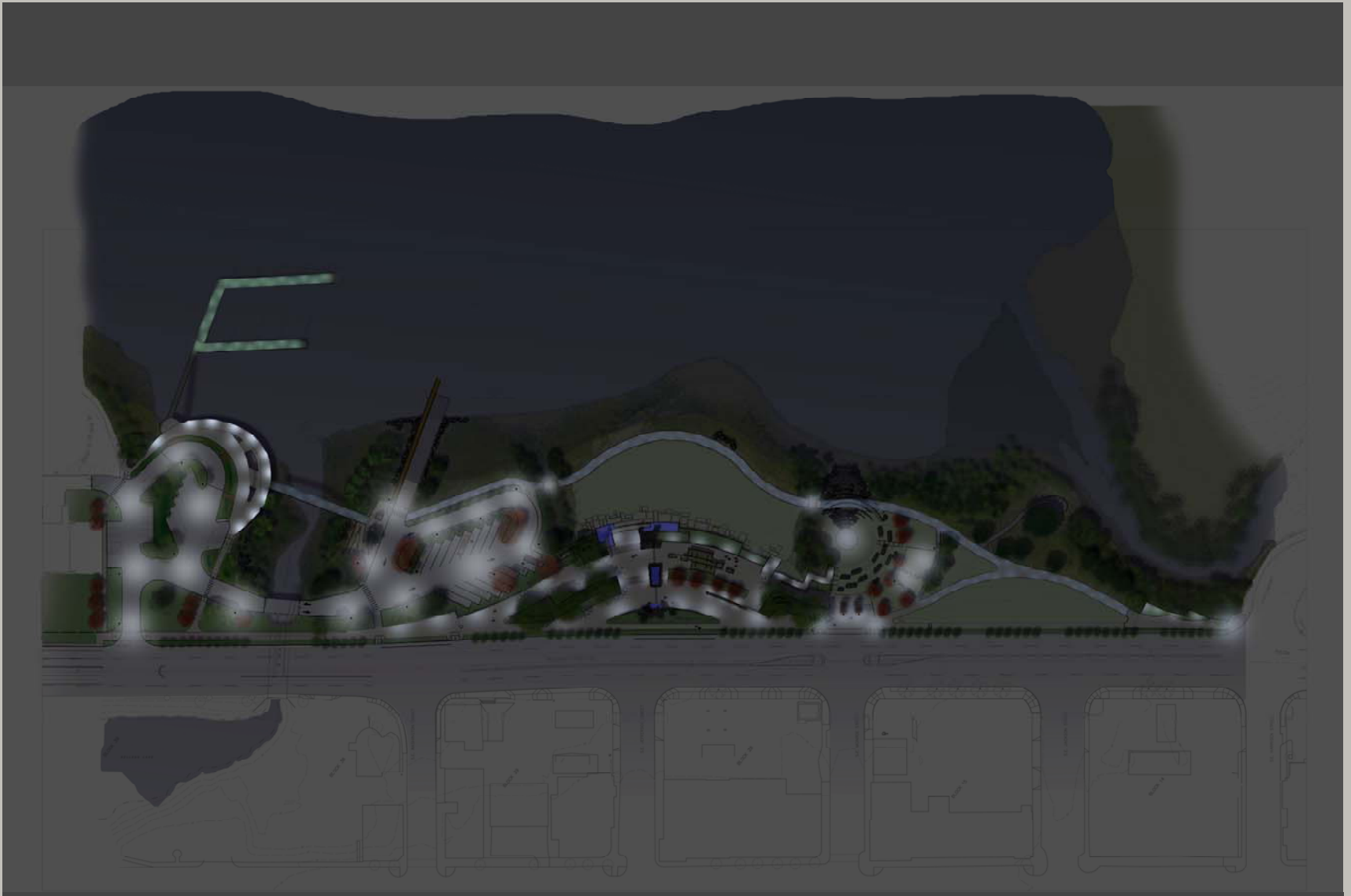
















Wall light



Path light



Step light

