



## AGENDA

---

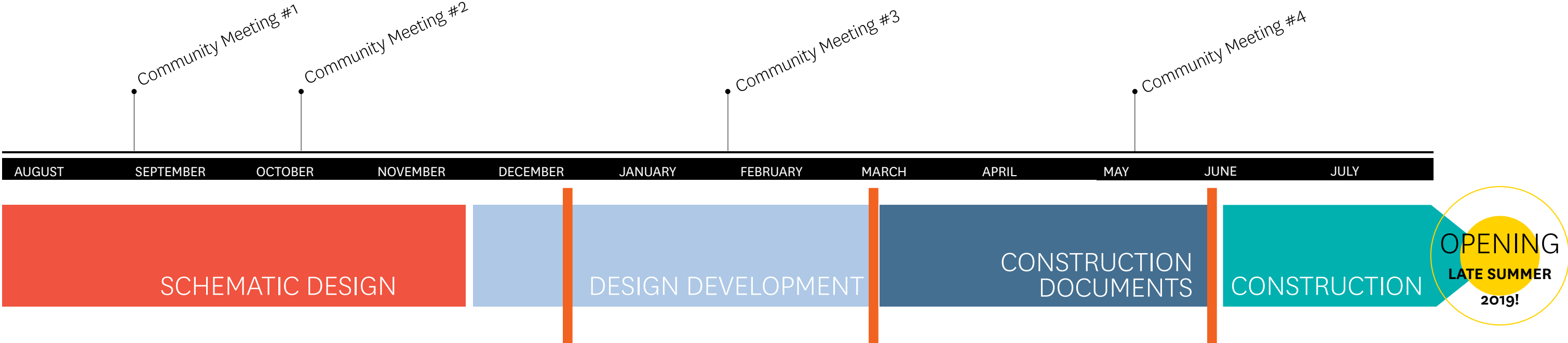
- Introduce Project Team
- Outreach To Date
- Art Integration Report
- Temporary Relocation Update
- Project Sustainability Goals
- Design Update *Hacker*
- Approach to Bridging Deficit between  
Cost Estimate and Dedicated Resources

# LEDDING LIBRARY

City Council Work Session

December 19, 2017

# Overall Schedule



Where we are now

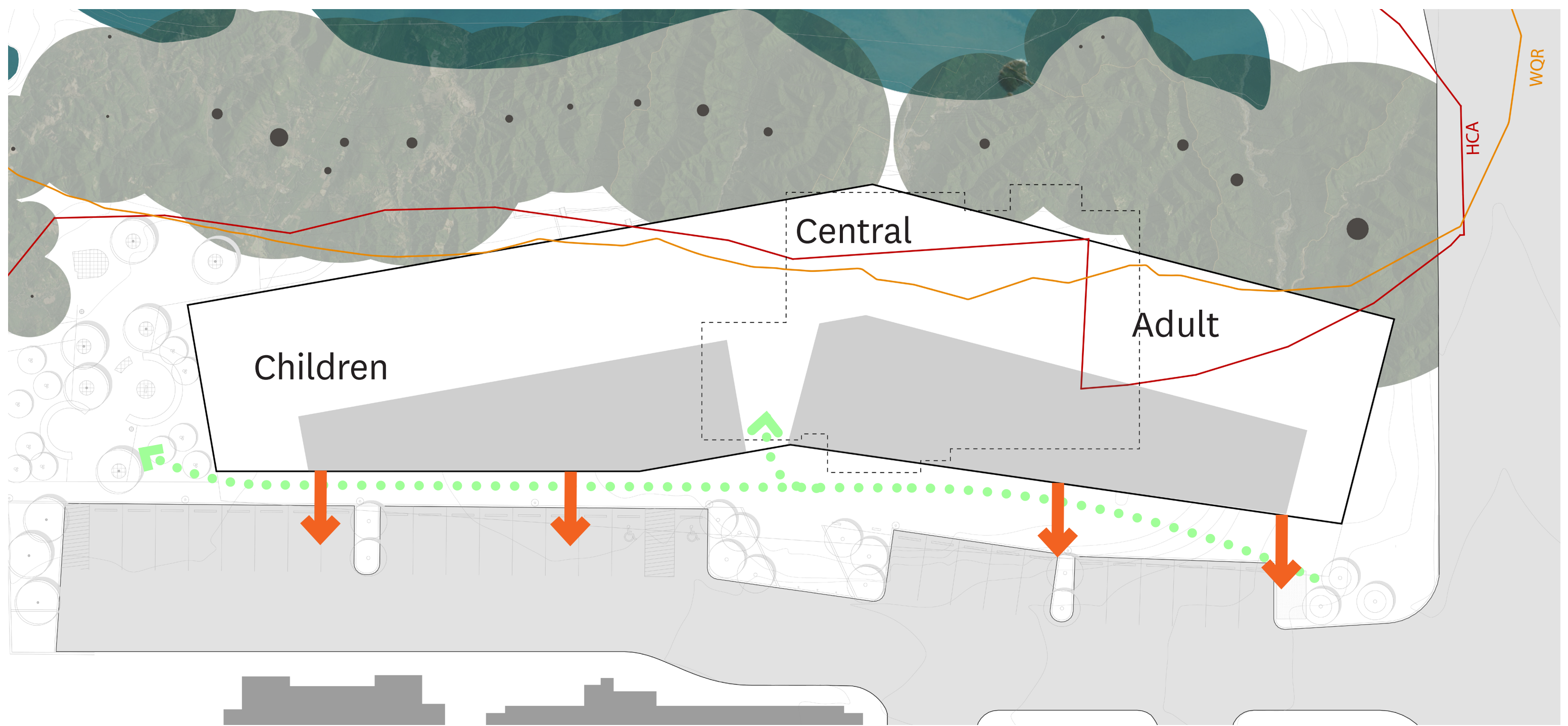
# Design Update

# A more fluid plan

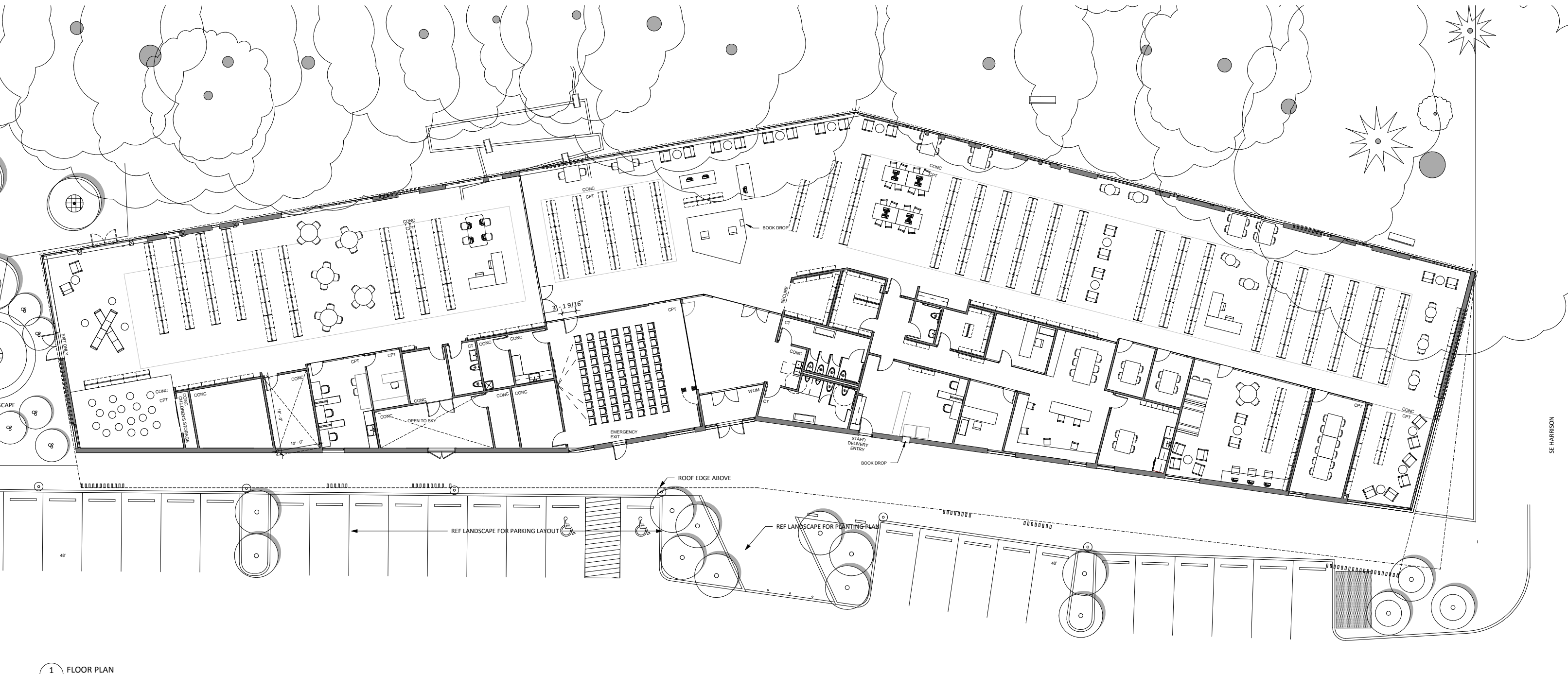
Connected to Your Landscape



# River Bend Plan Diagram

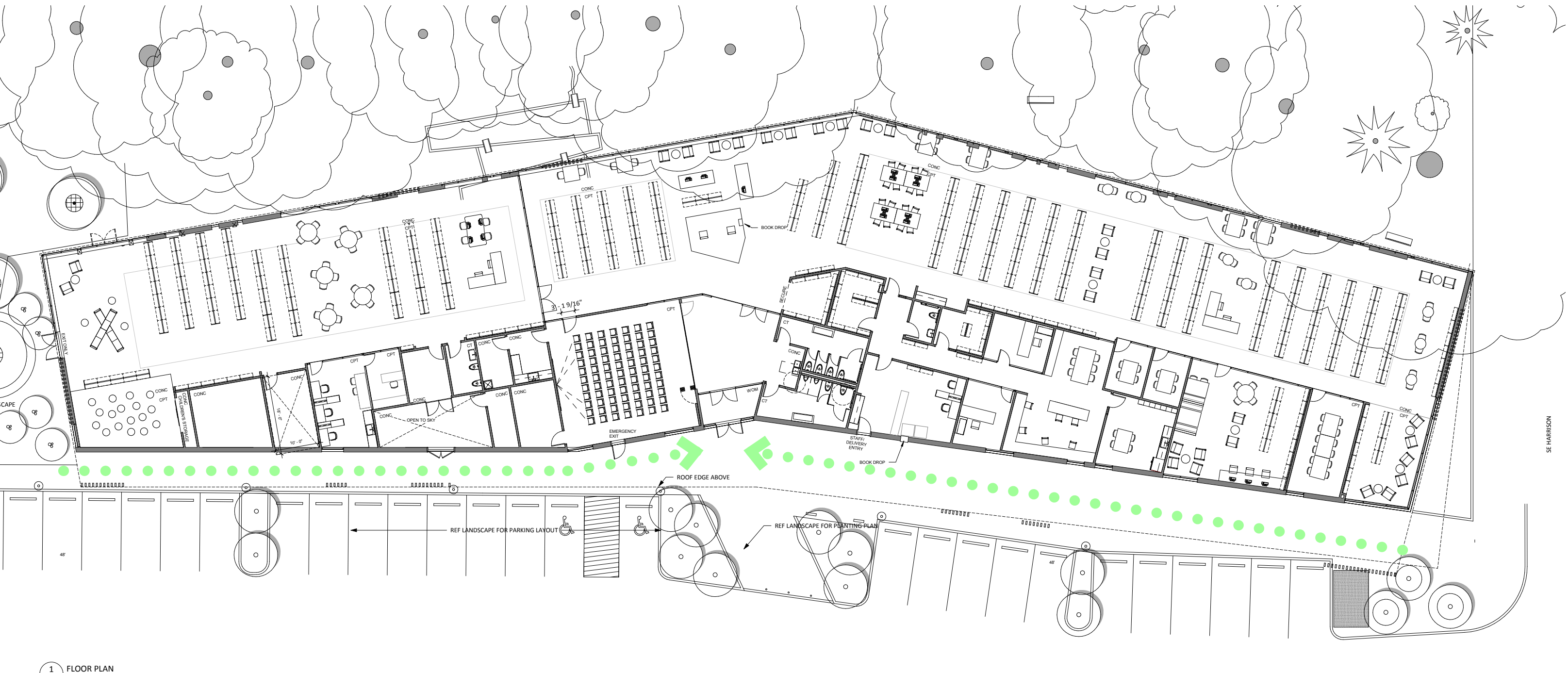


# Final SD Floor Plan



1 FLOOR PLAN  
A-101 3/32" = 1'-0"

# Entry



1 FLOOR PLAN  
A-101 3/32" = 1'-0"

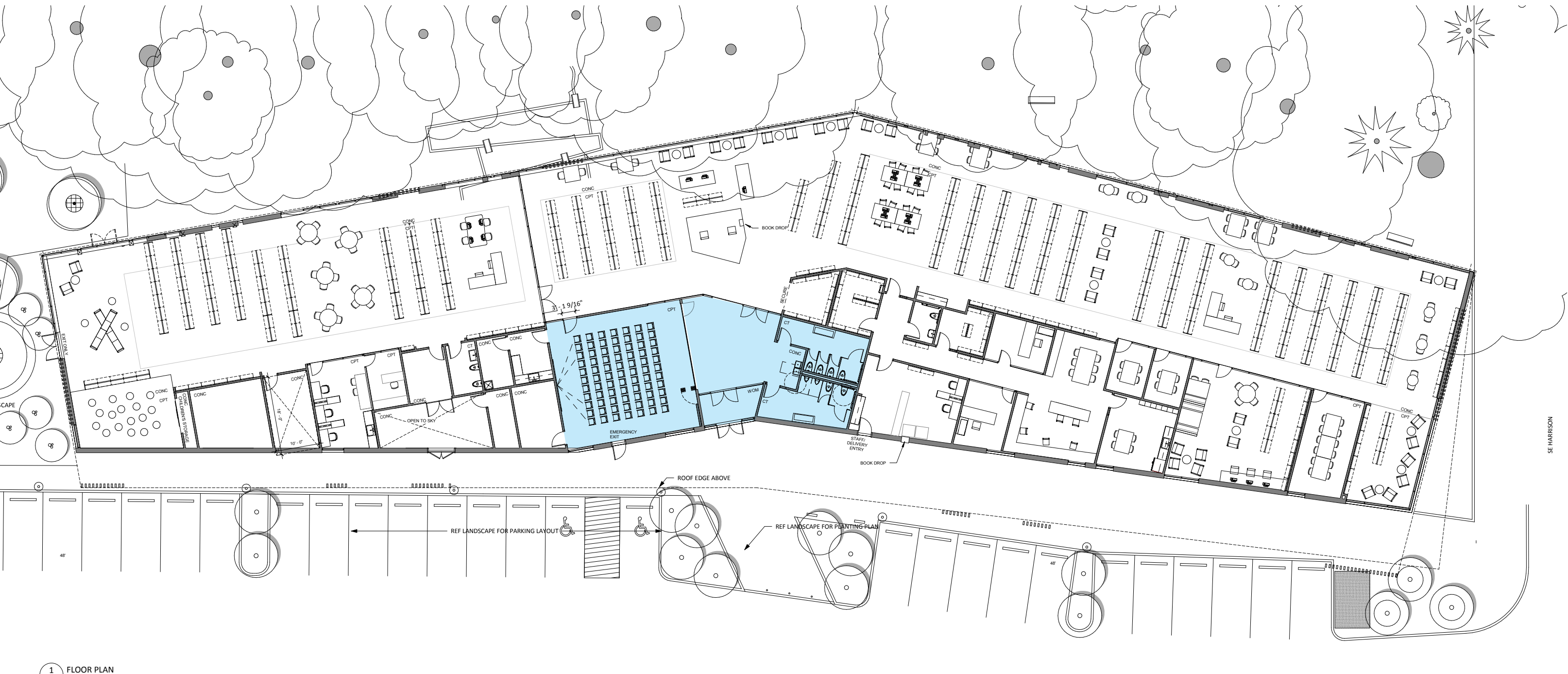


# Lobby



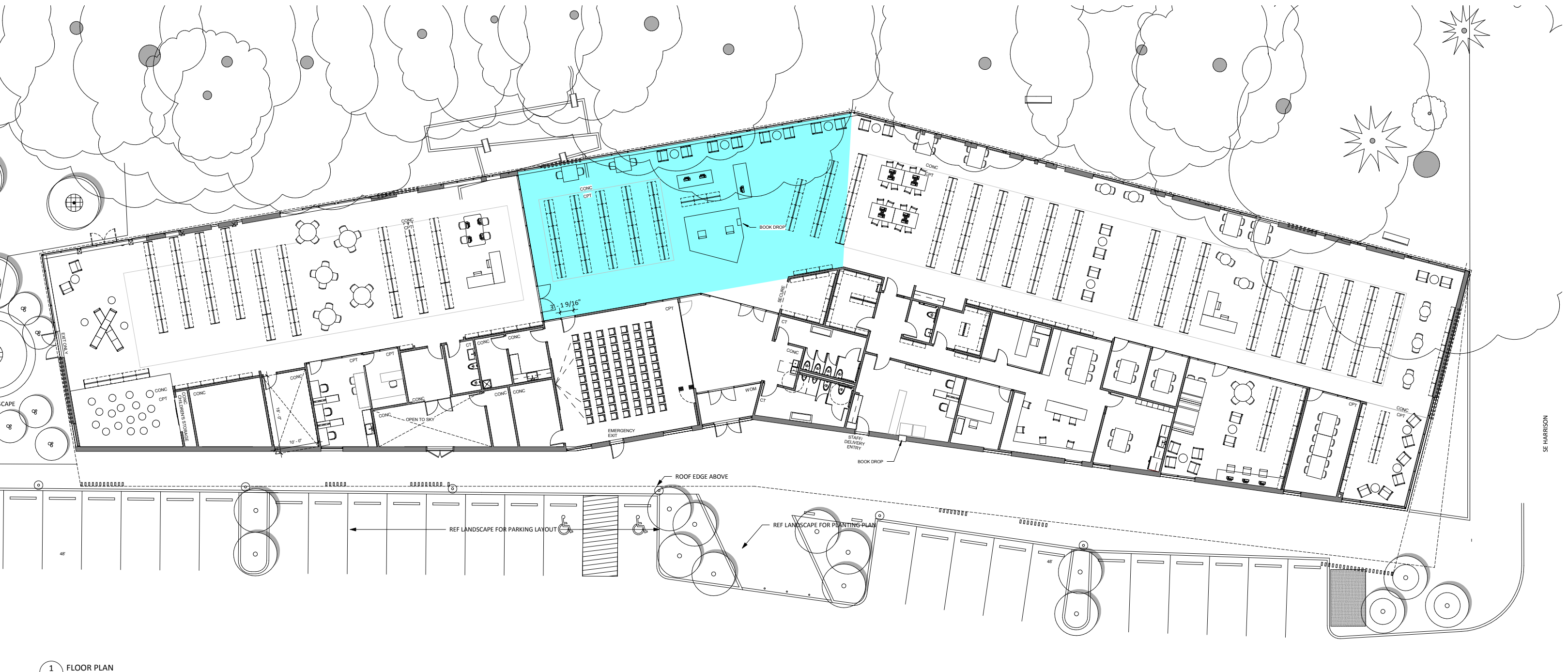
1 FLOOR PLAN  
A-101 3/32" = 1'-0"

# Community Room & Restrooms



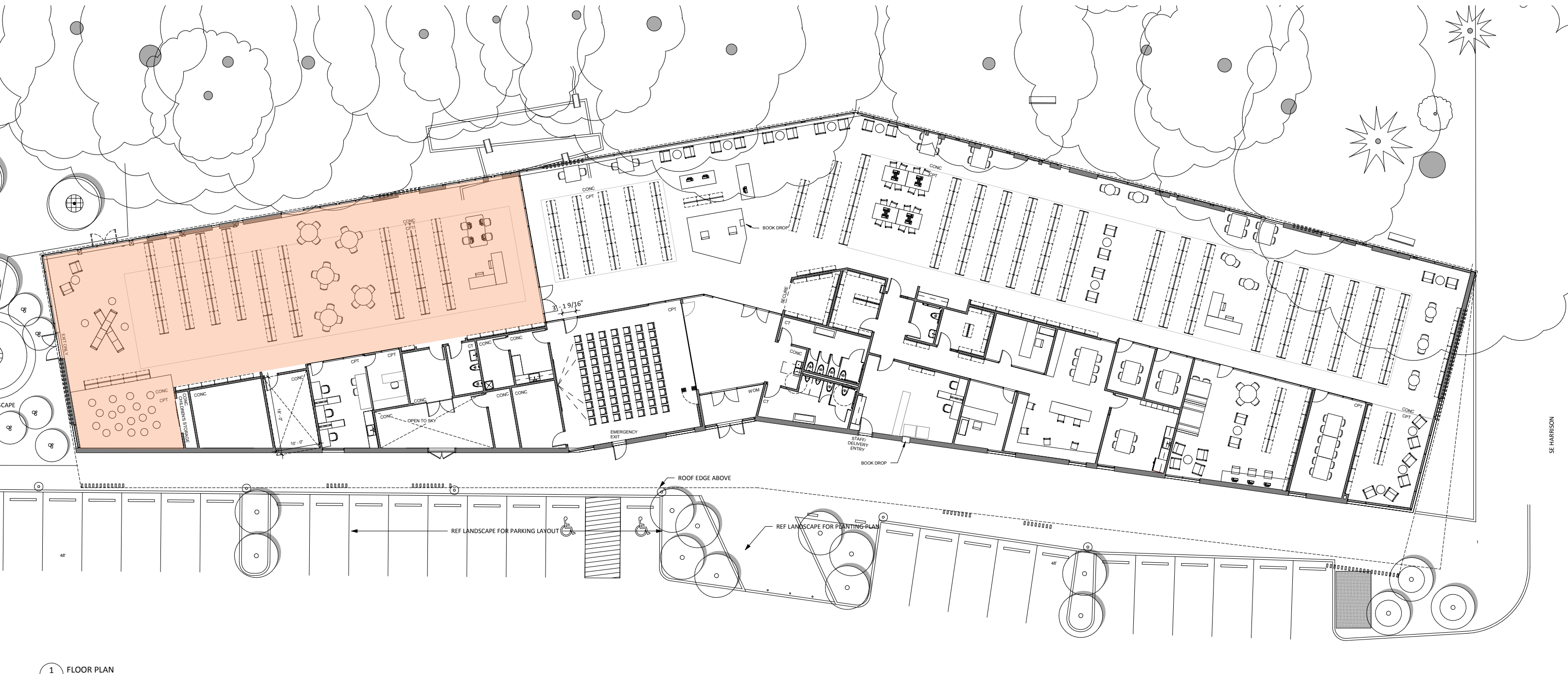
1 FLOOR PLAN  
A-101 3/32" = 1'-0"

# Central Space



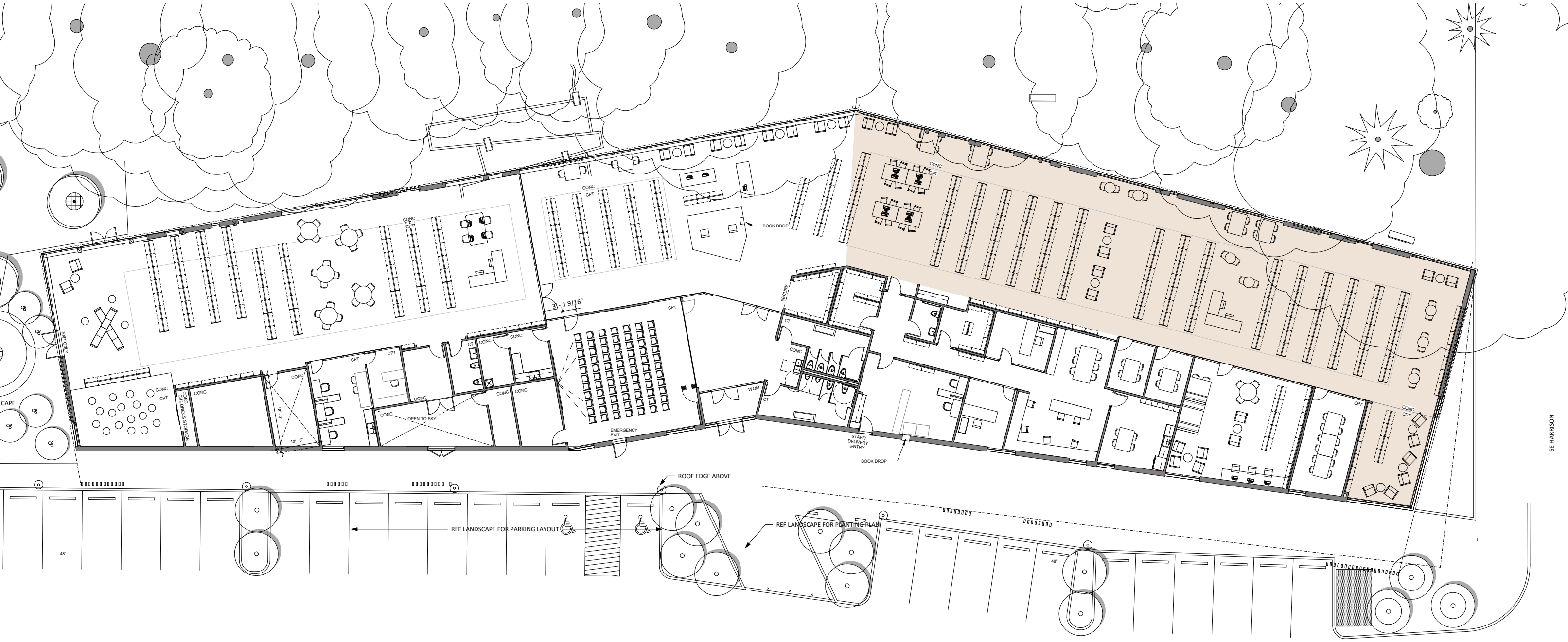
1 FLOOR PLAN  
A-101 3/32" = 1'-0"

# Children



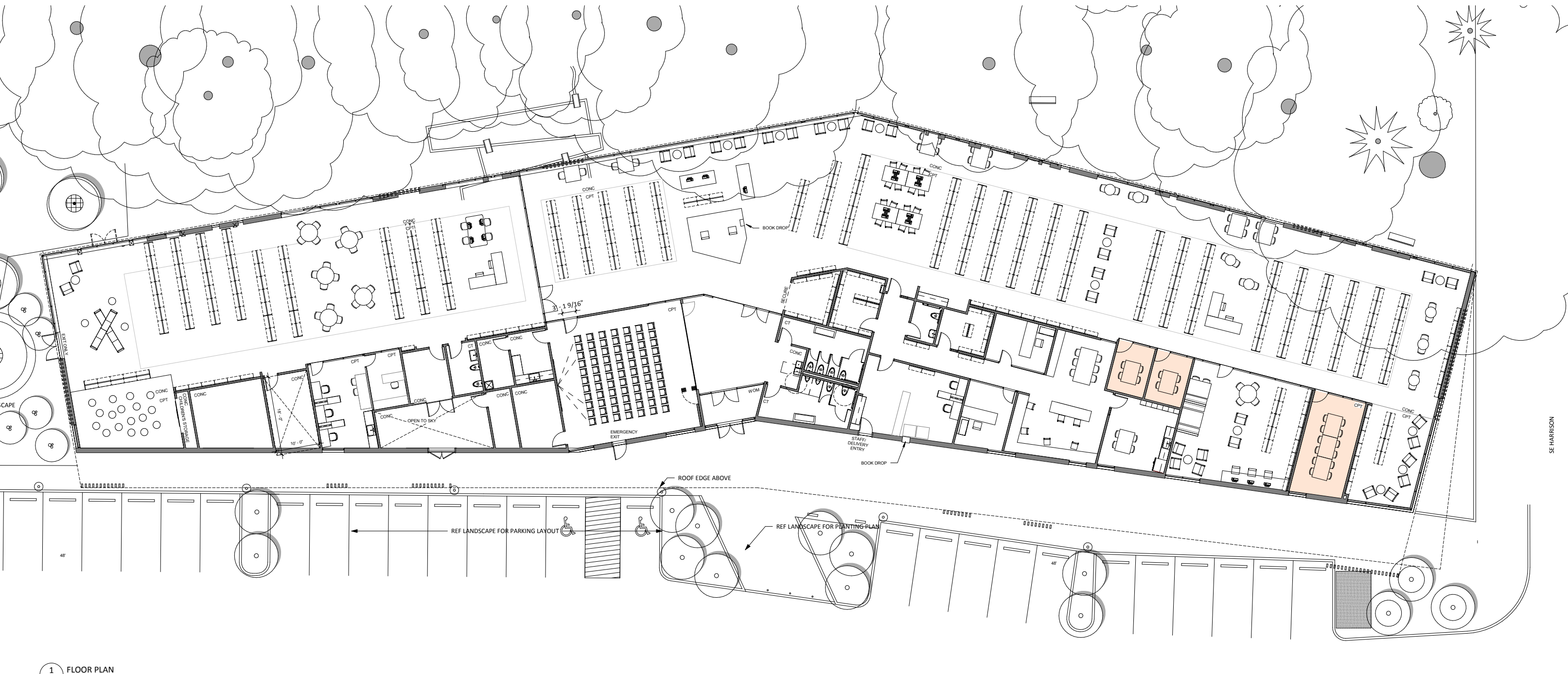
1 FLOOR PLAN  
A-101 3/32" = 1'-0"

# Adults



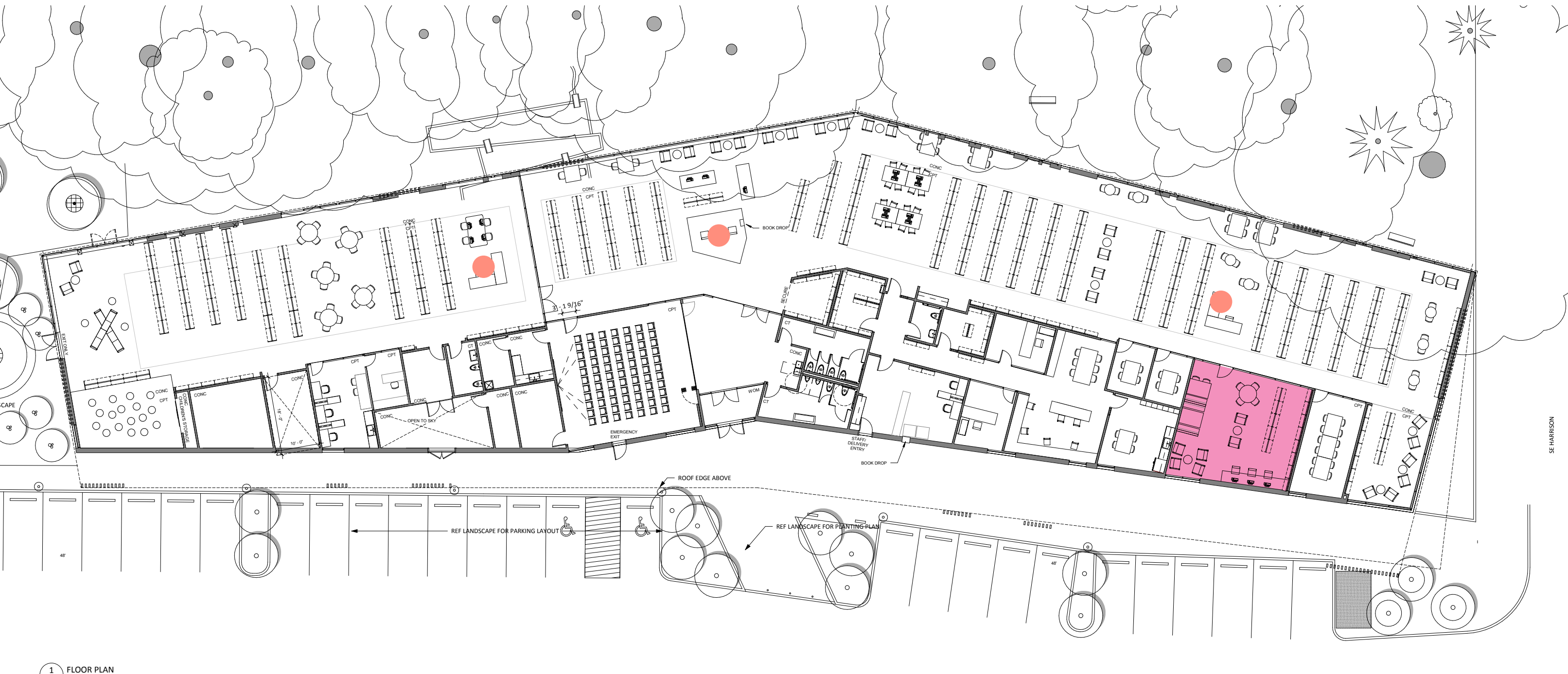
1 FLOOR PLAN  
A-101 3/32" = 1'-0"

# Conference / Meeting



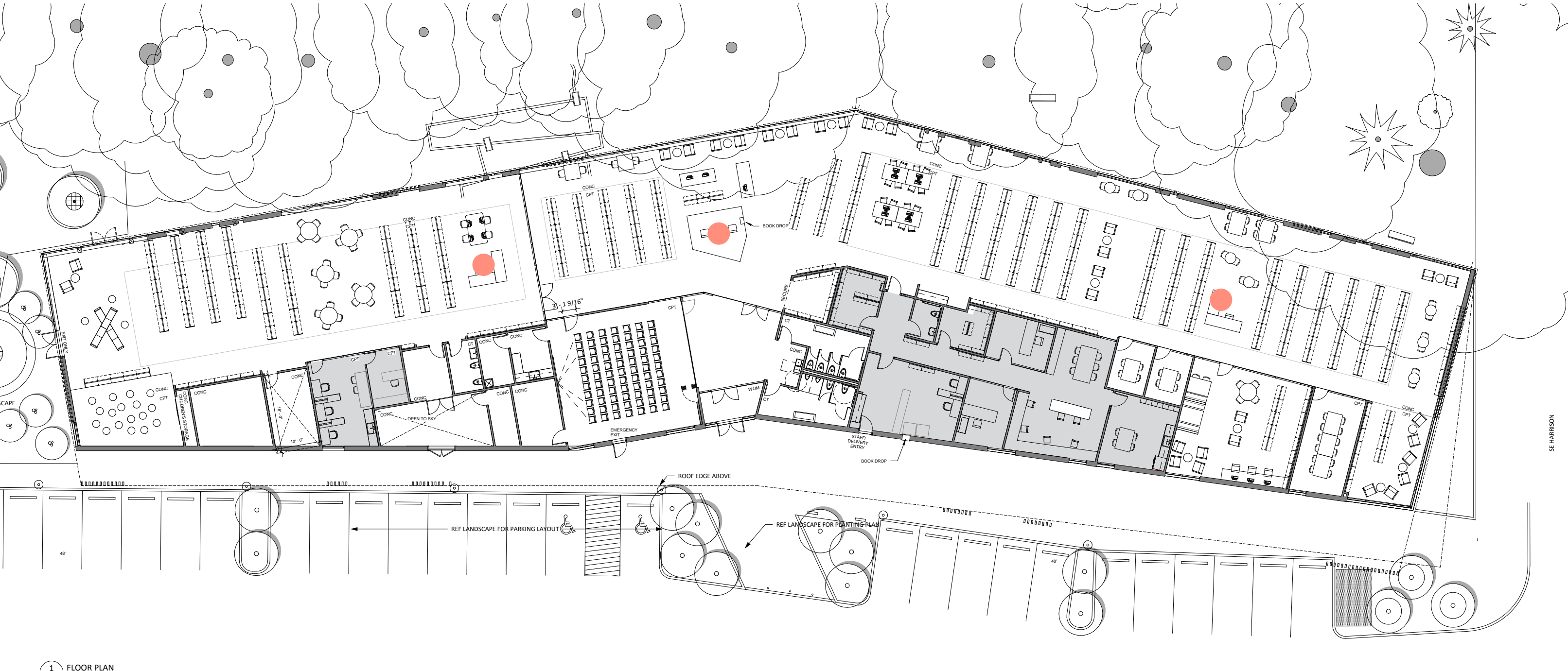
1 FLOOR PLAN  
A-101 3/32" = 1'-0"

# Teens / Service Points



1 FLOOR PLAN  
A-101 3/32" = 1'-0"

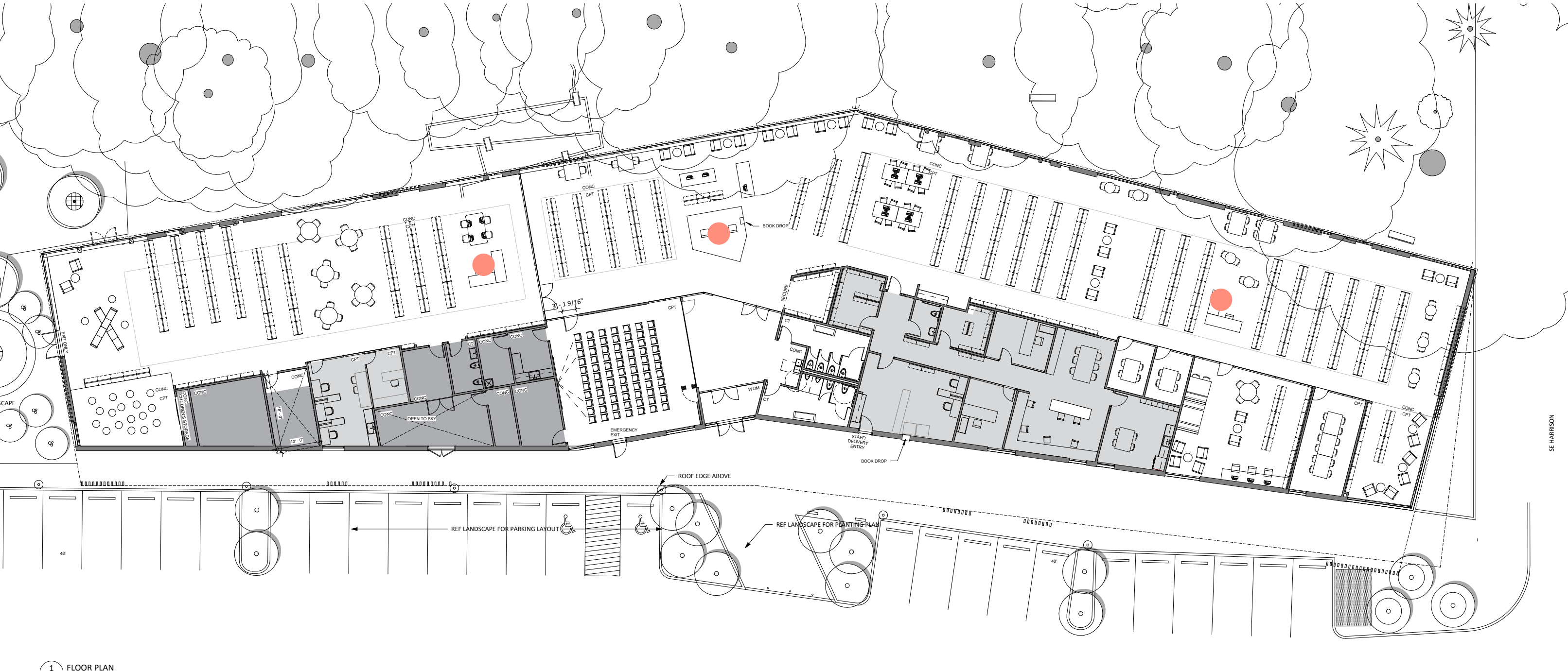
# Staff Areas



1 FLOOR PLAN  
A-101 3/32" = 1'-0"



# Support Areas



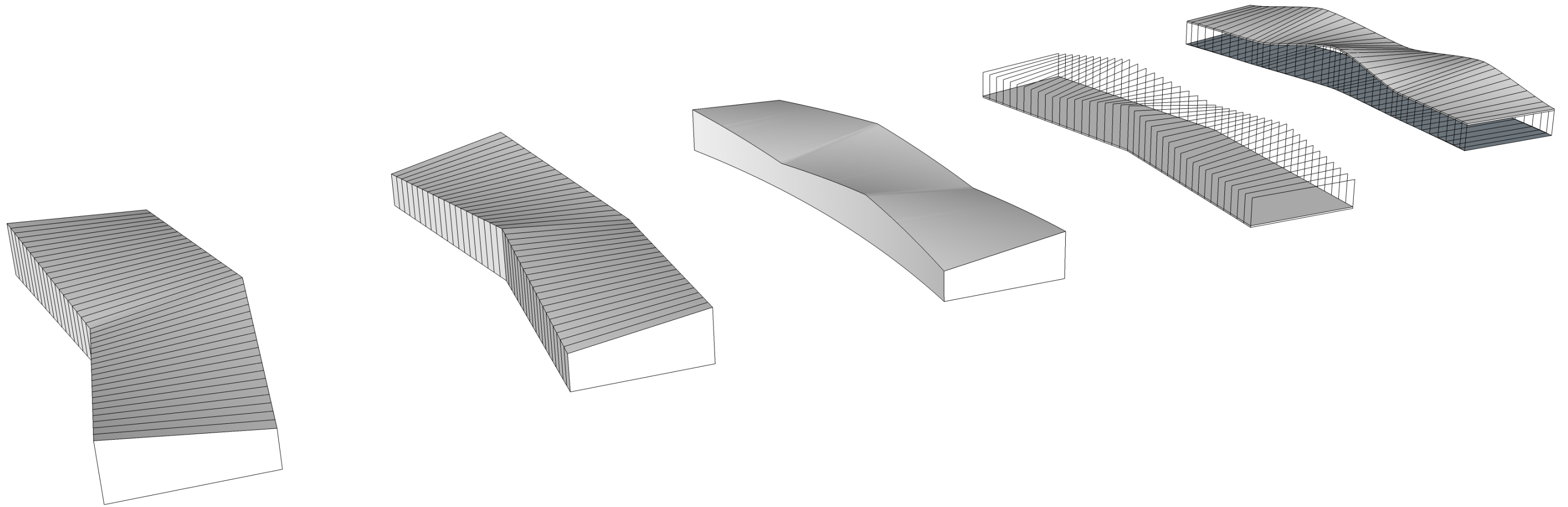
1 FLOOR PLAN  
A-101 3/32" = 1'-0"

# Grounds Improvements Plan

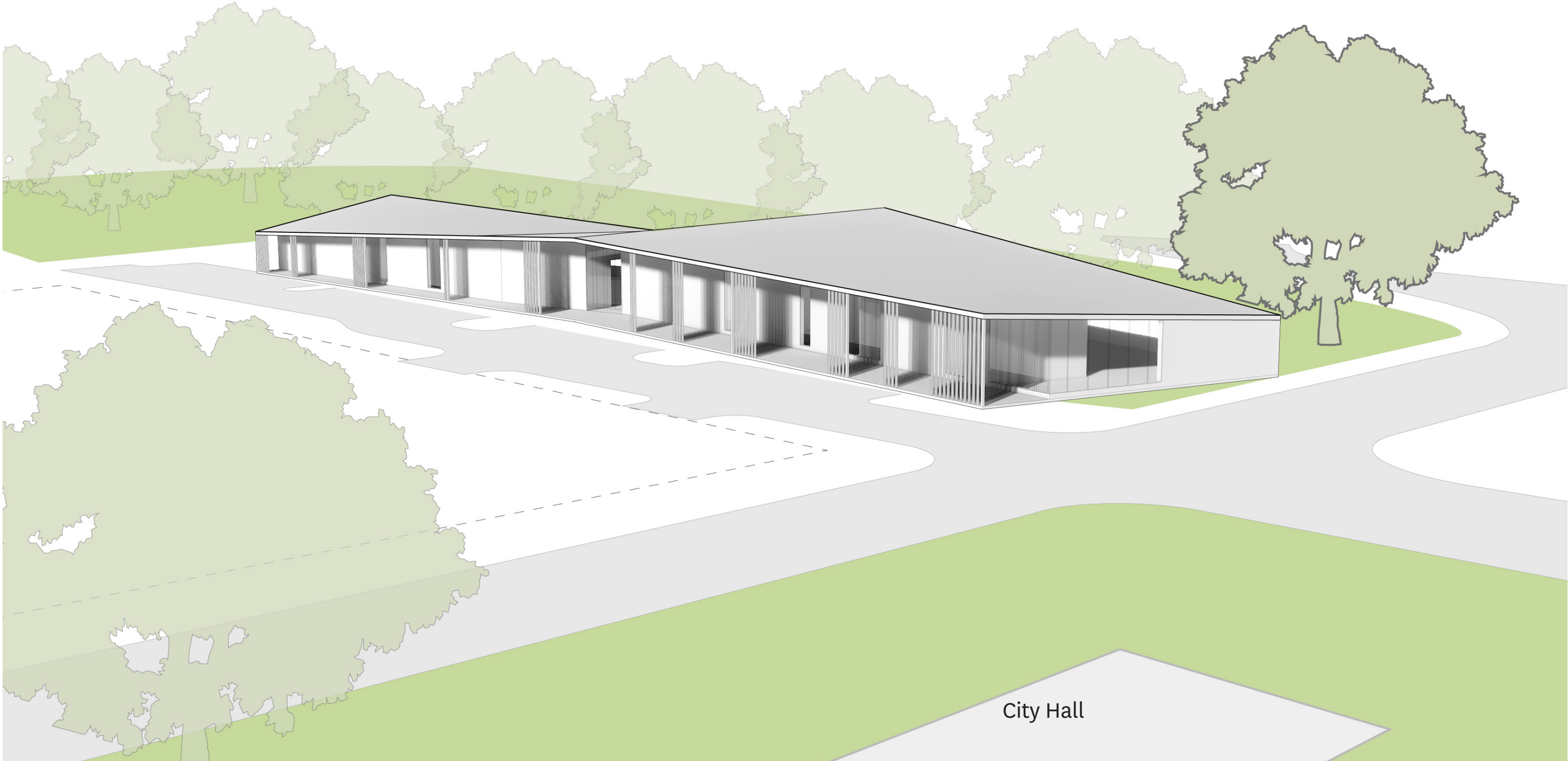


# Building Shape

# Roof Form Studies



# View from SW



City Hall

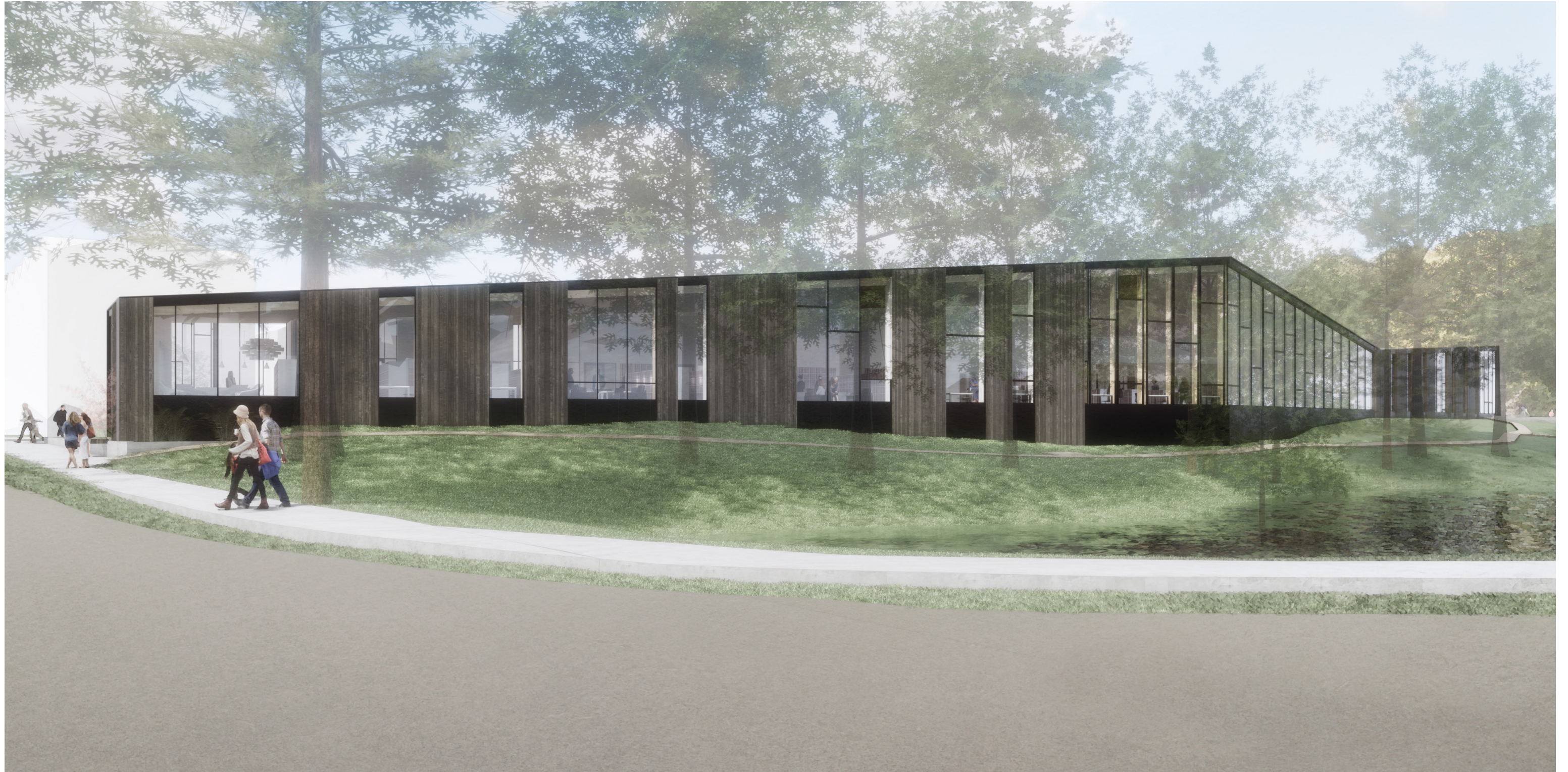
# View from SW



City Hall

# View from NE







# Exterior Finishes



Black Butte Ranch  
Lodge Pool Complex



Semi-solid stain on rough  
sawn western red cedar

# View from Interior looking North



# Net Zero Energy and Carbon Neutrality

# Path to Net Zero

- Enrolled in Energy Trust of Oregon's (ETO) 'Path to Net Zero' Program

# Path to Net Zero

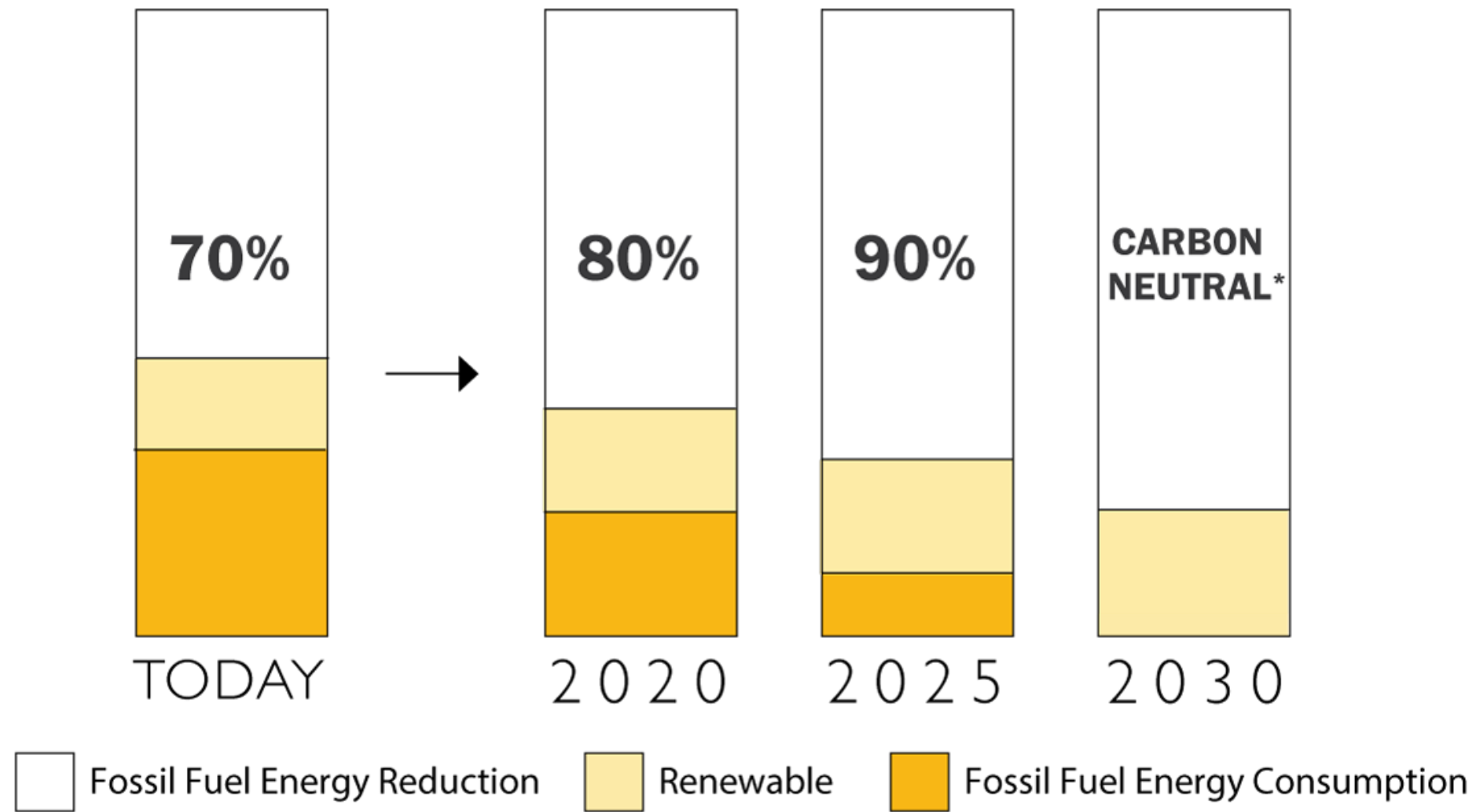
- Enrolled in Energy Trust of Oregon's (ETO) 'Path to Net Zero' Program
- Incentives fall into 2 categories: Energy Generation, Energy Efficiency

# Path to Net Zero

- Enrolled in Energy Trust of Oregon's (ETO) 'Path to Net Zero' Program
- Incentives fall into 2 categories: Energy Generation, Energy Efficiency
- ETO *Energy Use Intensity* (EUI) target aligns with 2030 Challenge target: 27.5 EUI



**Challenge: All new buildings, developments, and major renovations shall be carbon-neutral by 2030**



**Goal: Transform the building industry from major contributor of greenhouse gas emissions to a central part of the solution to climate crisis**

# System Options

## CODE

44 EUI

Does NOT meet 2030 Challenge or Path to Net Zero

“All air” heat and cooling  
Rooftop mechanical units

**4,000** metric tons  
of CO2 equiv / year\*

Equipment Size: Small + roof

Cost: deduct \$650,000

## BETTER

27.5 EUI

Meets 2030 Challenge & Path to Net Zero

High efficiency “all air” heating  
and cooling delivery

**2,900** metric tons  
of CO2 equiv / year\*

Equipment Size: Medium

Cost: deduct \$330,000

## BEST

23 EUI

Exceeds 2030 Challenge & Path to Net Zero

Radiant Heated Slab = Cozy  
Utilizes ‘passive’ cooling

**2,100** metric tons  
of CO2 equiv / year\*

Equipment Size: Small

Cost: deduct \$325,000

Included in \$8,050,00 estimate



# On-Site Energy Production

