

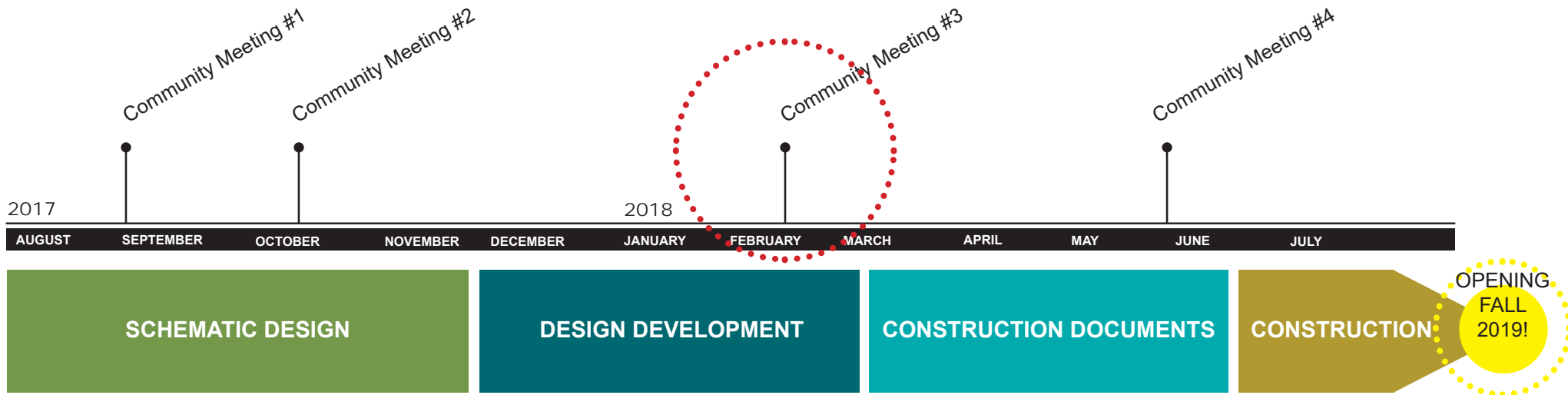
CITY OF MILWAUKIE

LEDDING LIBRARY

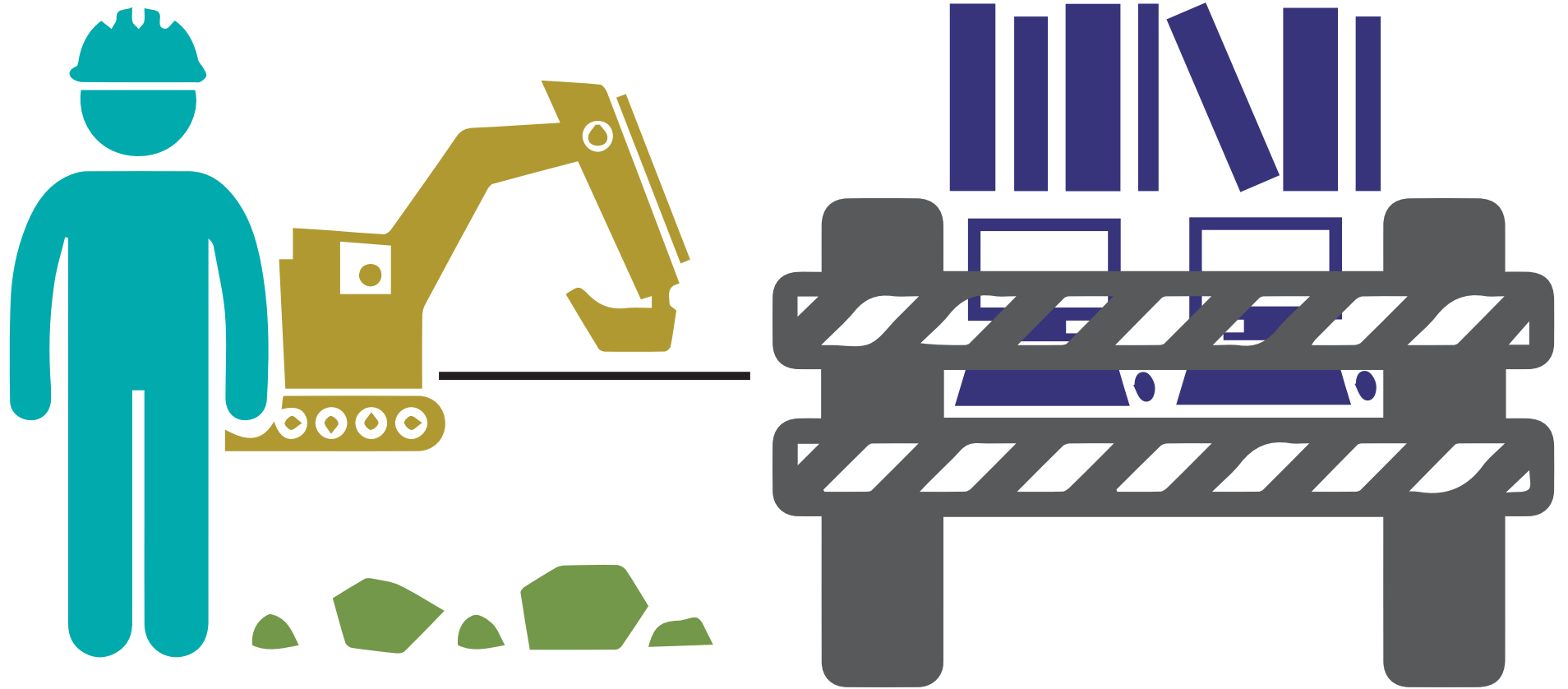
Community Meeting

February 22, 2018

Schedule Update



Relocating During Construction



HISTORY OF RELOCATION EFFORT

Staying on Site vs. Relocation



Staying on Site vs. Relocation



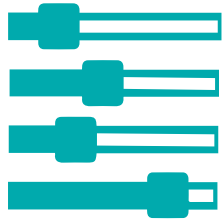
**Better overall
library product**



**Safety
considerations**



**Cost
considerations**



Criteria for Relocation

RELOCATION PROPERTY BASIC CRITERIA CHECKLIST

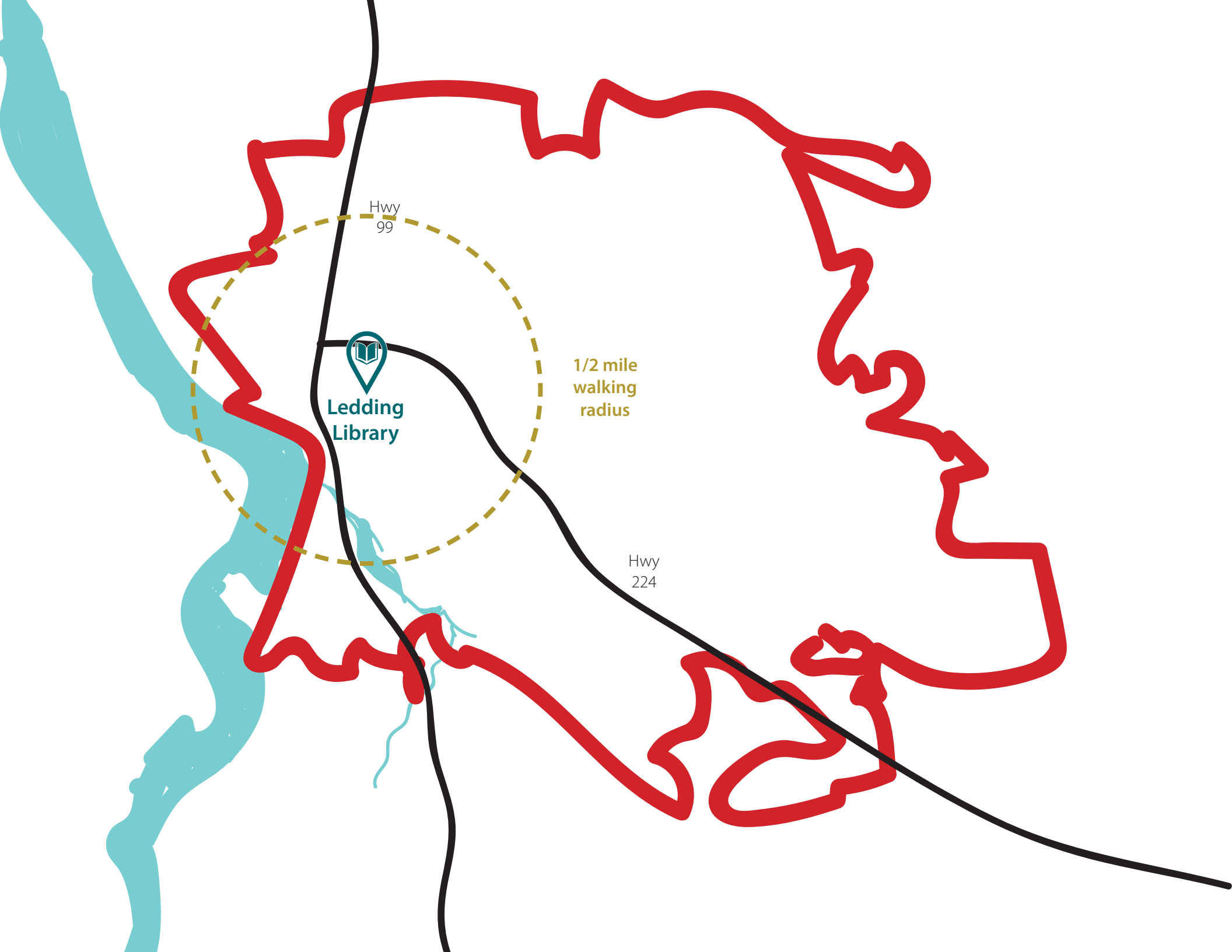
Potential Relocation Property Name: _____

Potential Relocation Property Location: _____

- Site is 8,000 SF+ or approximately .20+ of an acre
- If built space, needs to be at least 7,500 SF of space
- If built space, needs to have restrooms (or willing to install)
- Is within the Library District
- Has access to parking (at least 20 spots)
- Is accessible by public transportation (within 0.5 mile walk)
- Must be ADA compliant or willing to make the space ADA compliant
- Has space for couriers to make daily deliveries
- Has the ability to install an exterior book drop
- Has access for power
- Has access for IT needs
- Property owners are ready to receive the Library sometime between January '18 - May '18
- Property owners are open to a term of 12-18 months with flexibility for +/- 2 months

ADDITIONAL CRITERIA

- Must be okay with shelving being bolted into floor/walls
- Would have space for library office functions
- Is a large open space



Ledding
Library

1/2 mile
walking
radius

Hwy
99

Hwy
224

Relocation Options



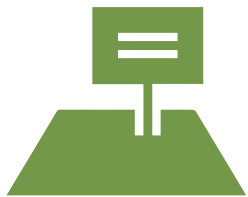
18 Churches



12 Retail Spaces



1 City of Milwaukie Facility



3 Open Space / Lots

Proposed Approach to Relocation



Modular Unit

Proposed Approach to Relocation

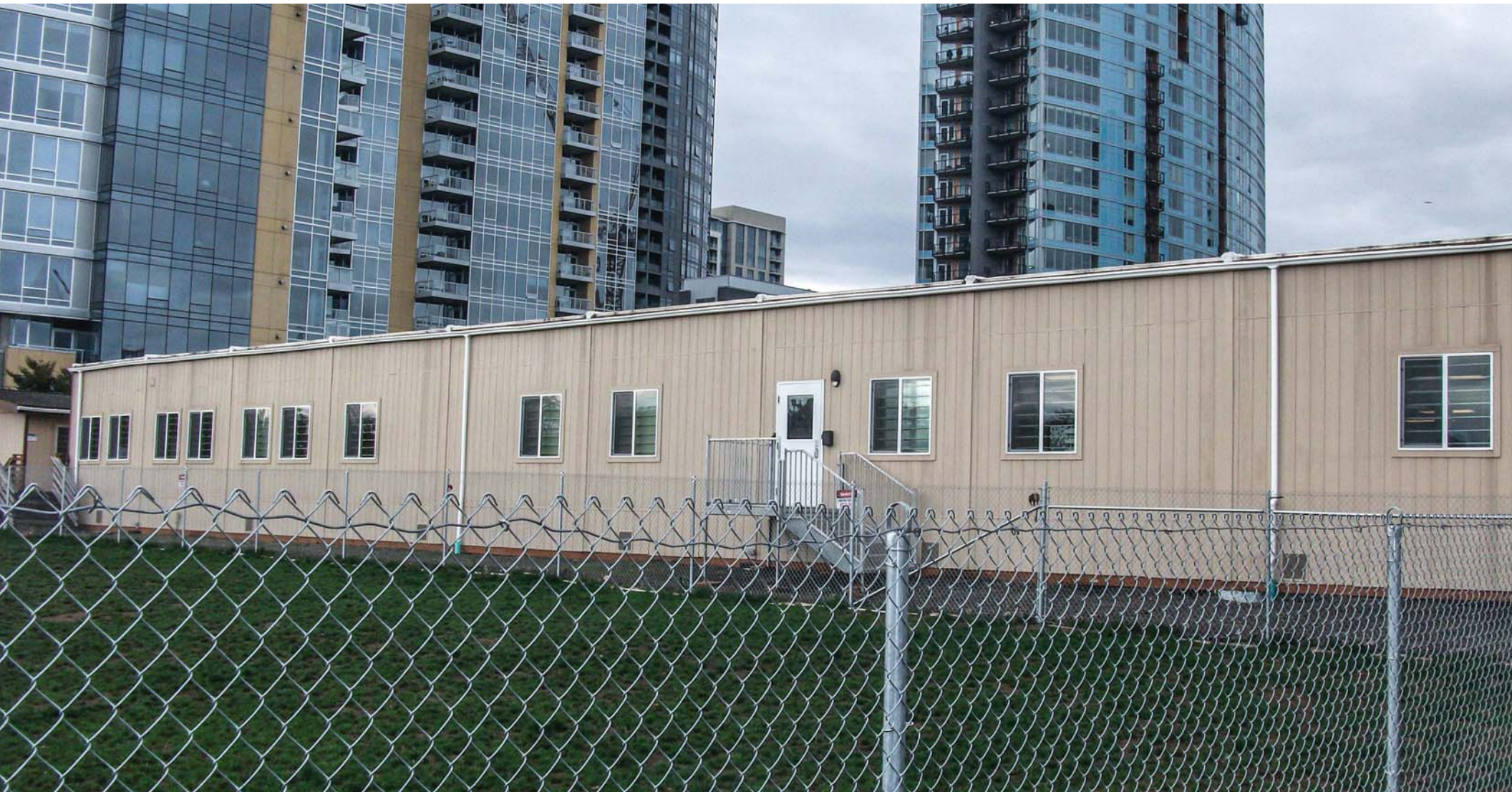
**Temporary
Relocation to
TriMet Park and
Ride Lot located at
9600 SE Main St**



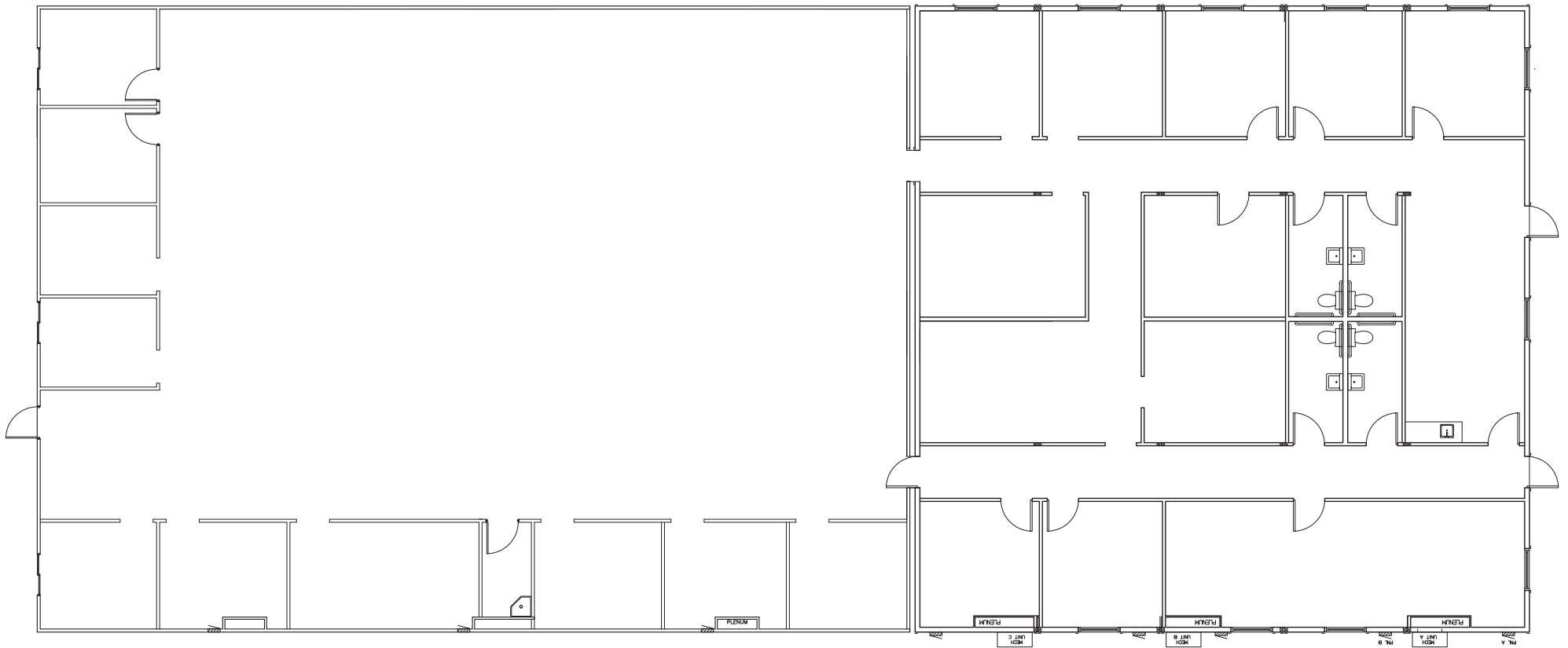
Relocation Site



Proposed Approach to Relocation



Proposed Approach to Relocation



Floor Plan

OUTREACH + FUNDRAISING

Outreach Efforts

**Speaking to Area
Businesses and
Philanthropists**





Fundraising



Commitments

Ledding Library of Milwaukie Foundation	\$ 28,000
Swinerton Builders	\$ 5,000



Fundraising



Current Legislative Ask

State of Oregon \$300,000

Current Grant Funding Asks

Collins Foundation \$250,000

Institute of Museums & Library Services \$250,000



Fundraising



Additional Grant Funding Asks

PGE Foundation	\$ 25,000
PGE Renewable Development Foundation ...	\$100,000
Randall Charitable Trust	\$100,000
Meyer Memorial Trust	\$250,000

QUESTIONS + DISCUSSION