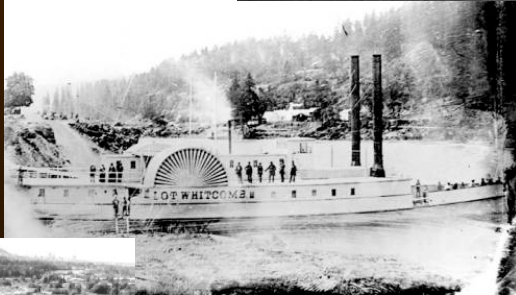
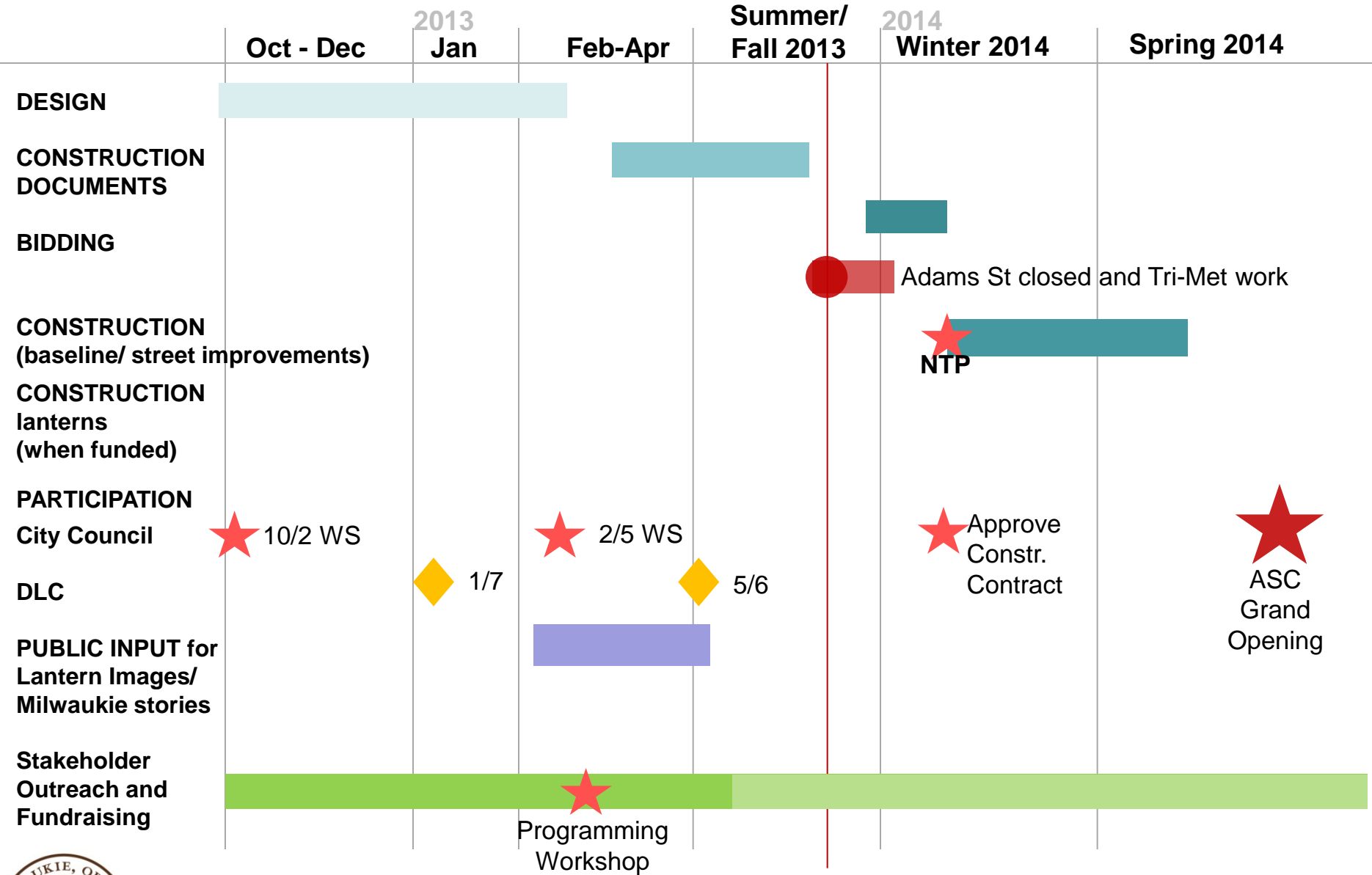




# Adams Street Connector DLC Presentation

May 6, 2013





# Adams Street Connector Schedule





overview – existing conditions





The Adams Street Connector project is one of the first steps to implementing the South Downtown Concept Plan

The Connector is being designed with the future plaza in mind

south downtown  
concept plan



Private parking lot  
(to be used for taekwondo, post office, and archery parking)

NEW STREET PARKING

POST OFFICE

(outside sidewalk and entries to stay  
the same)

ARCHERY

Areas outlined in Red are  
'enhancements', and are not  
part of the base project.

adams street site plan





Using Lighting and Materials to provide a story and points of interest along the heritage walk and Anchoring Adams Street with the history and essence of Milwaukie



adams street connector

Design of the lanterns is inspired by Anchoring Adams Street to the context and materials of the nearby landscape



beacon – lantern design



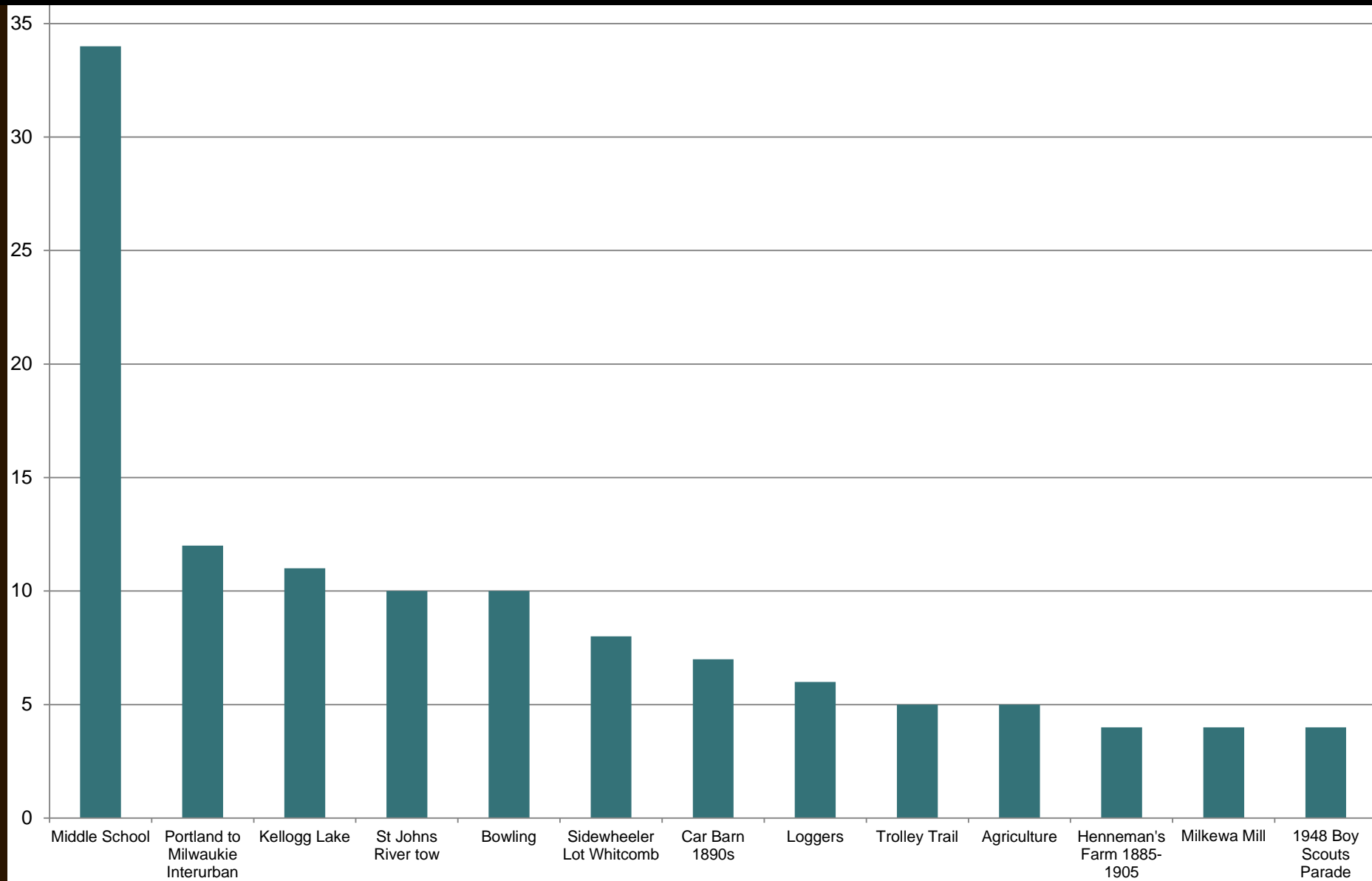


LED lighting with various colors  
Punched image panels

beacon – lantern design





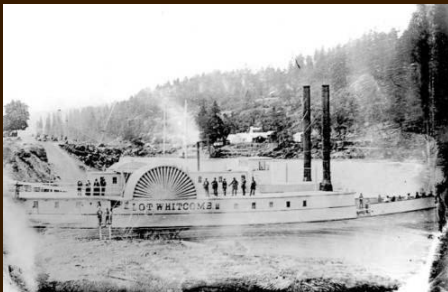


historic themes and images

transportation



river and creek



industry



culture /  
significant  
events



historic themes and images





To provide both everyday interest, and special seasonal or weekly public event space



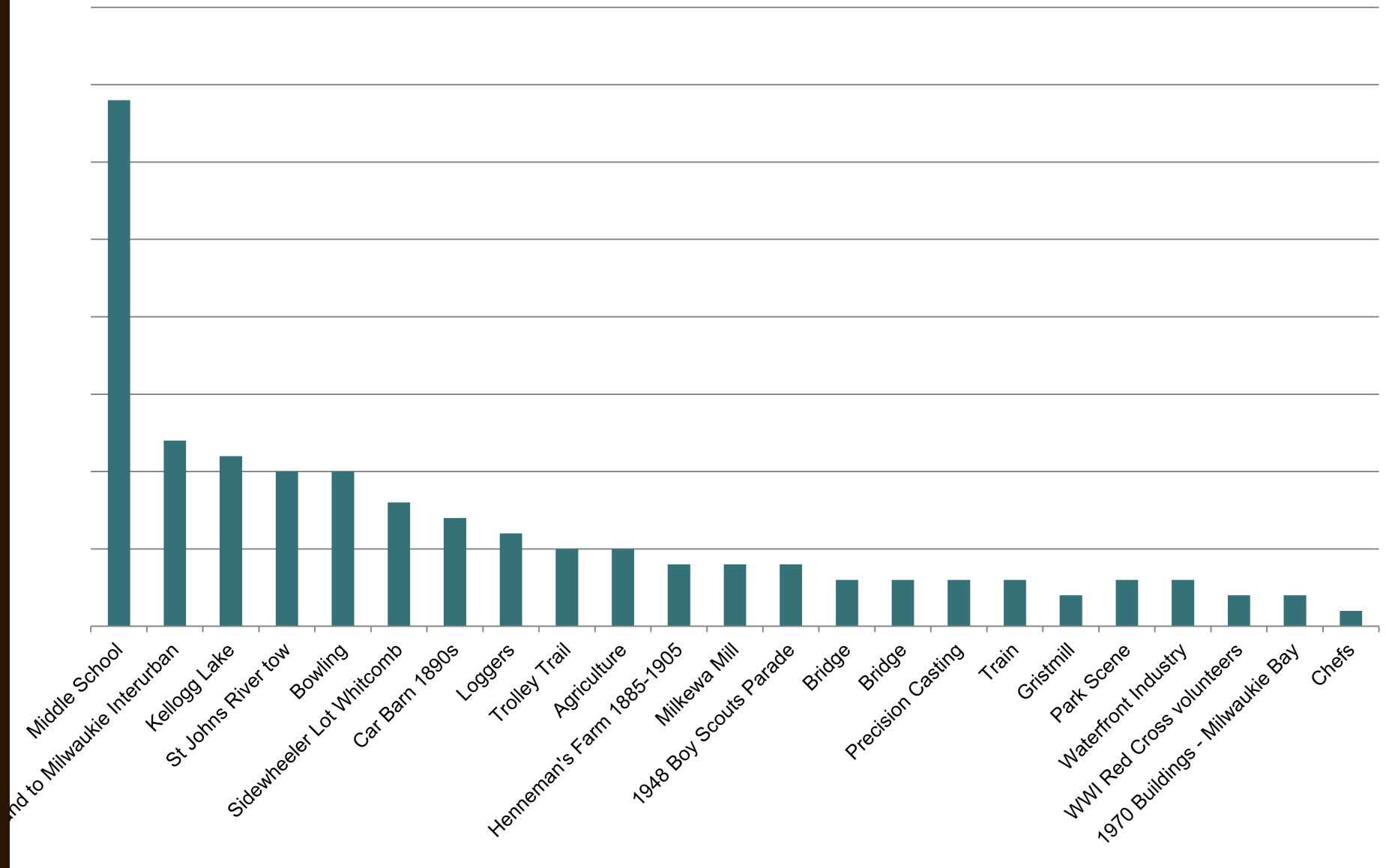
beacon – lantern design

*I believe history is what makes it the present. Without history we have no past or future. It is through our past that we have a better future. I would like to see us honor our past and the individuals that gave us our future.*

*- Milwaukie Story submission*







historic themes – all responses