

# Adams Street Connector







The Adams Street Connector provides a new compelling pedestrian path from Main Street to the Portland Milwaukie Light Rail Station. The former Adams Street will be re-purposed into a place for people with seating niches, iconic beacon markers, and small multi-use plazas.

The plan includes:

- 12' wide pedestrian path
- 4' reinforced turf paving shoulders allowing emergency vehicle access
- 10 new angled parking stalls along Main Street (changed to two-way traffic)
- Multi-use plaza at Northeast corner of retail building
- Speed table and curb extensions at Main Street intersection
- New landscaping
- 5 seating niches with beacon markers
- A beacon pavilion West of Main Street
- Multi-use plaza area in park

**\$788K TOTAL**

\$571K Direct Construction

\$217K Contingency and Mark-ups





***Adams Street Connector in the evening:***  
The illuminated beacons provide a elegant ambiance to the re-purposed street.





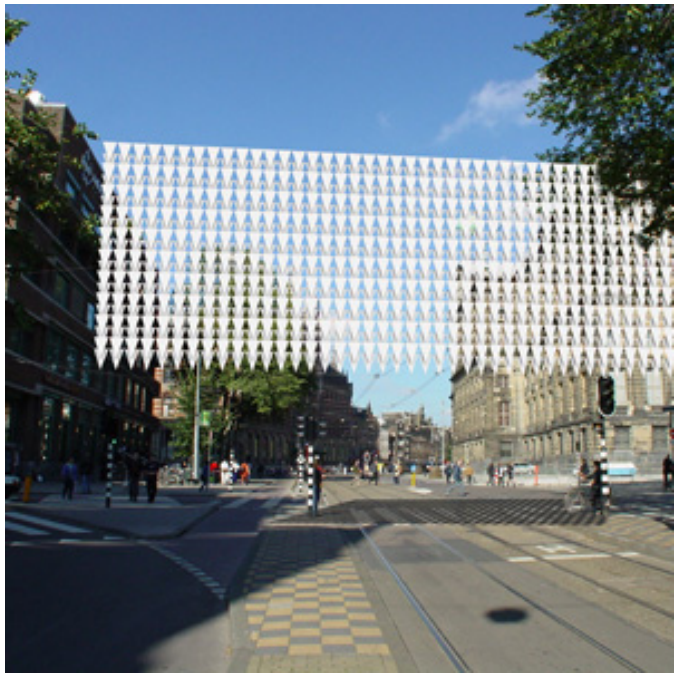
## Beacon Markers

Glowing Lanterns will guide visitors onto Main Street, distinguish South Downtown Milwaukie and provide an icon for the City.



**Adams Street Connector during the day:**  
View from Main Street looking East towards the Portland Milwaukie Light Rail Station.

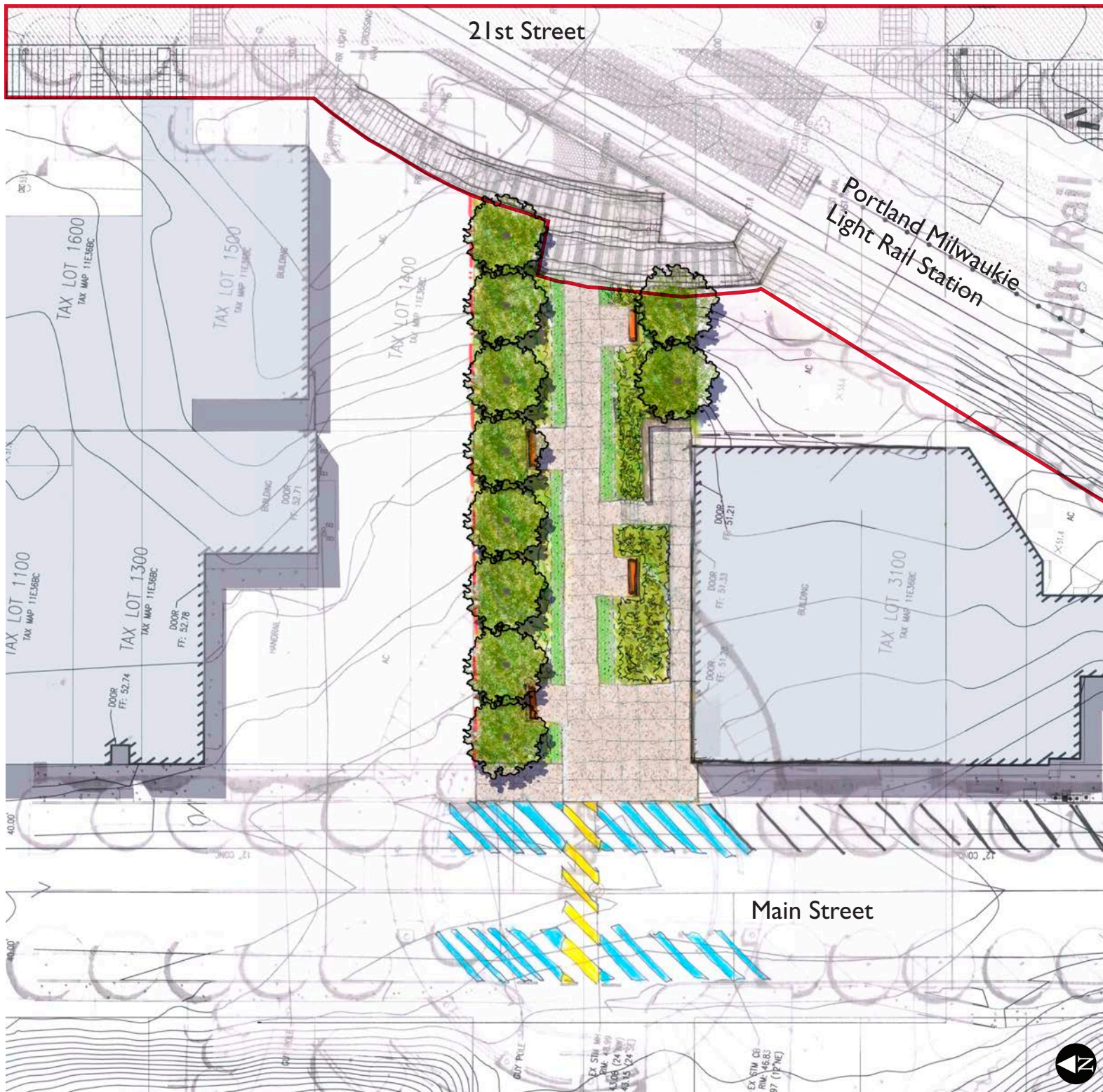




Distinct elements to pique one's interest and invite them to Main Street, provide an allure for Milwaukee and a framework for the celebration of the City.







The Base Project includes all the essential elements of the full project, but limits the development to the West side of Main Street.

The plan includes:

- 12' wide pedestrian path
- 4' reinforced turf paving shoulders allowing emergency vehicle access
- 10 new angled parking stalls along Main Street (changed to two-way traffic)
- Multi-use plaza at Northeast corner of retail building
- New landscaping
- 5 seating niches with benches

**\$364K TOTAL**

\$225K Direct Construction

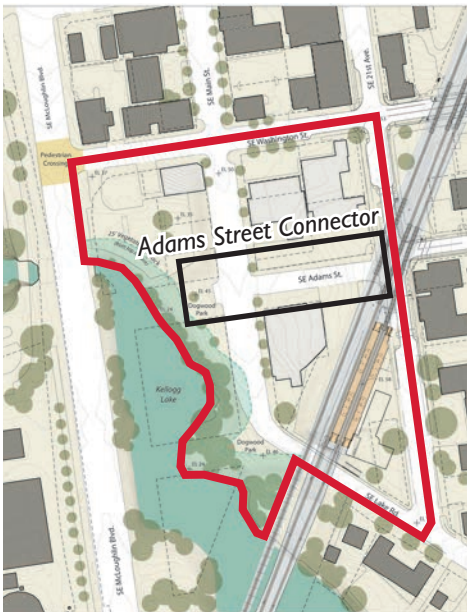
\$139K Contingency and Mark-ups



# South Downtown Concept Plan - 2011



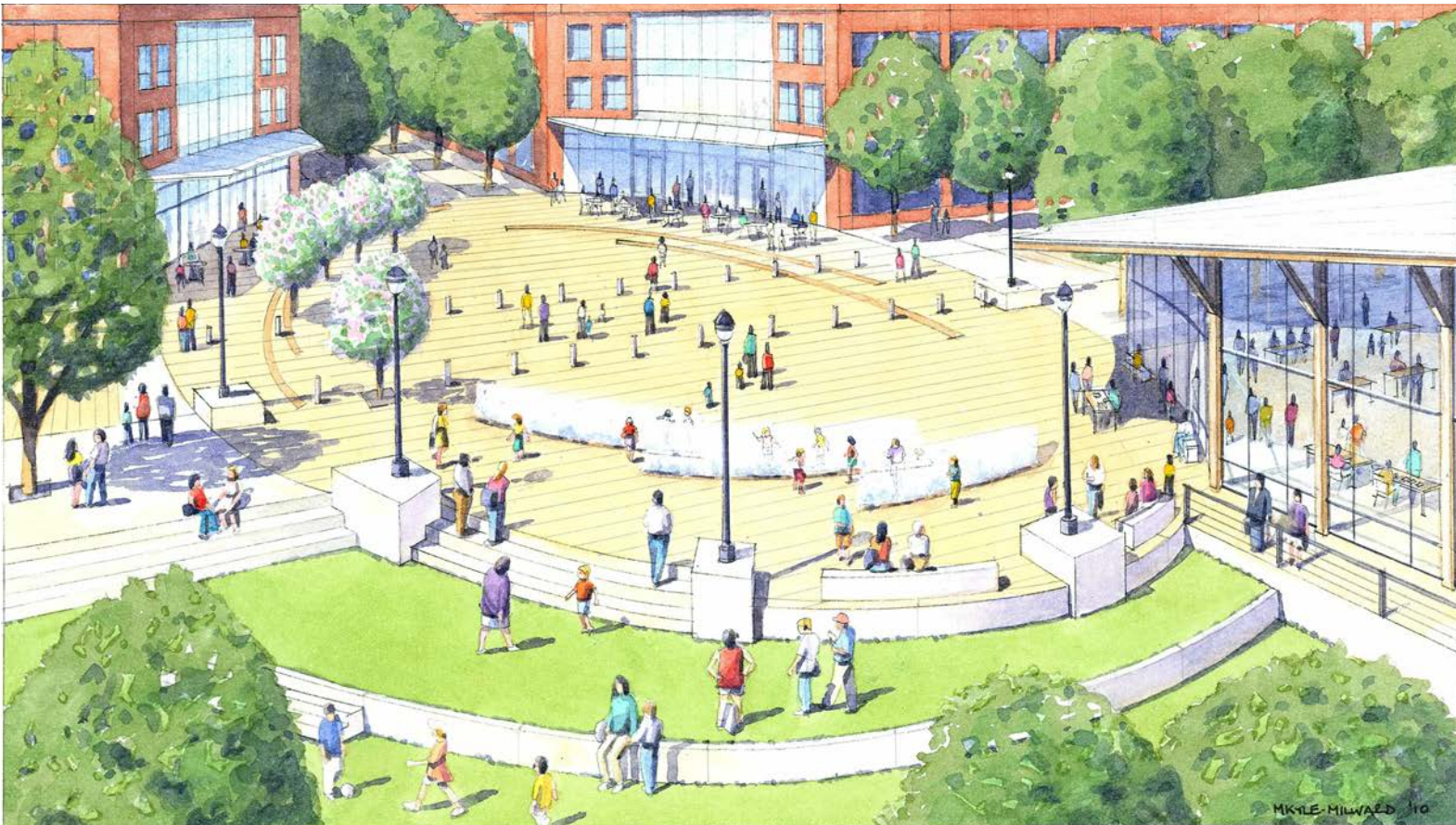
Existing and Future Civic Improvements



Study Area



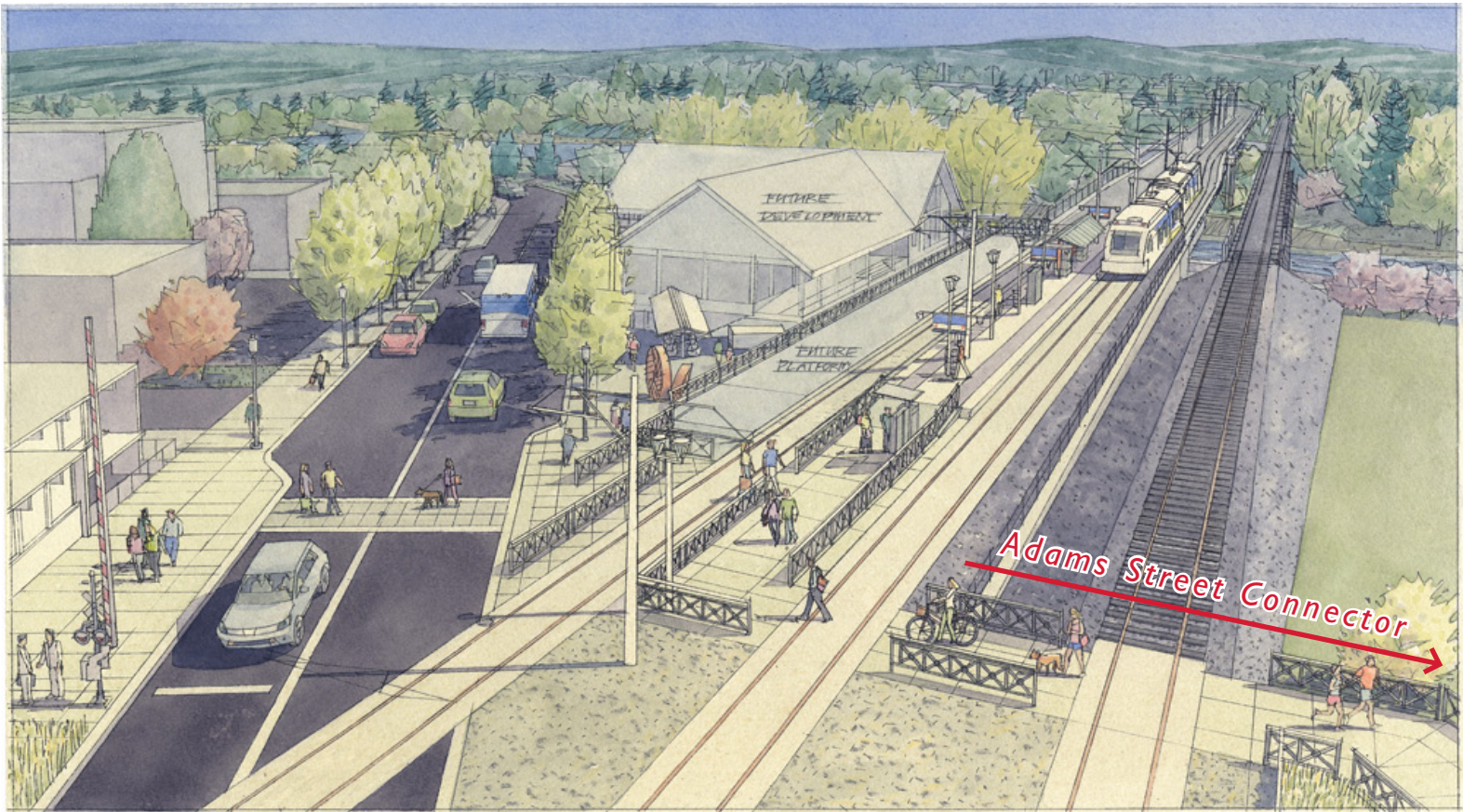
Concept Plan



Artist's rendering of the proposed plaza at the intersection of Main Street and Adams Street: the Heart of South Downtown Milwaukee.



# Portland Milwaukie Light Rail Project



Artist's rendering of the proposed Tri-Met Station Platform and Railroad Crossing at the East end of Adams Street looking South.