




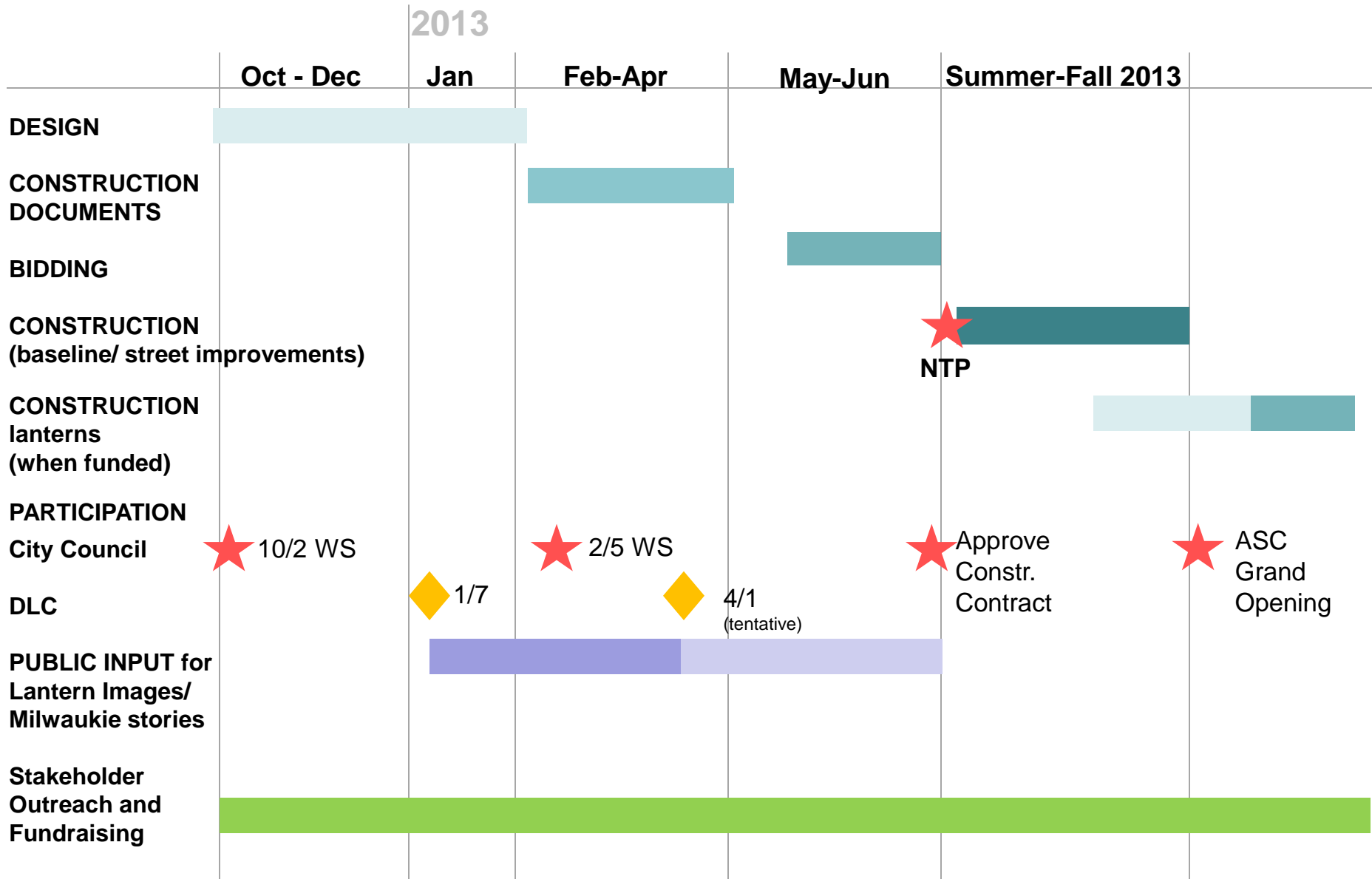
Adams Street Connector Lantern Presentation

DLC Presentation
January 7, 2013

- 
1. Project overview
 2. Overall design context
 3. Beacon/lantern design
 4. Image process
 5. Questions / discussion



agenda



overview – adams street connector schedule



overview – existing conditions



existing view from dogwood park



existing view from 21st ave to river

PHASE 1	2008	South Downtown Concept Plan Review, Validation, Exploration and Development
PHASE 2	2008-09	Diagnosis Pattern Language for a New South Downtown Concept
PHASE 3	2009	Guidelines and strategies for Implementation
PHASE 4	2010	Pattern Language and Concept Plan Testing and Refinement
PHASE 5	2011-12	'Small Moves' Project Implementation <i>(underway)</i> Zoning and Comp Plan Updates <i>(pending)</i> Land Disposition and Development Agreements
PHASE 6	2012-13	Light Rail Construction Begins First Construction Projects
PHASE 7	2014-15	Light Rail Station Construction Light Rail Opens

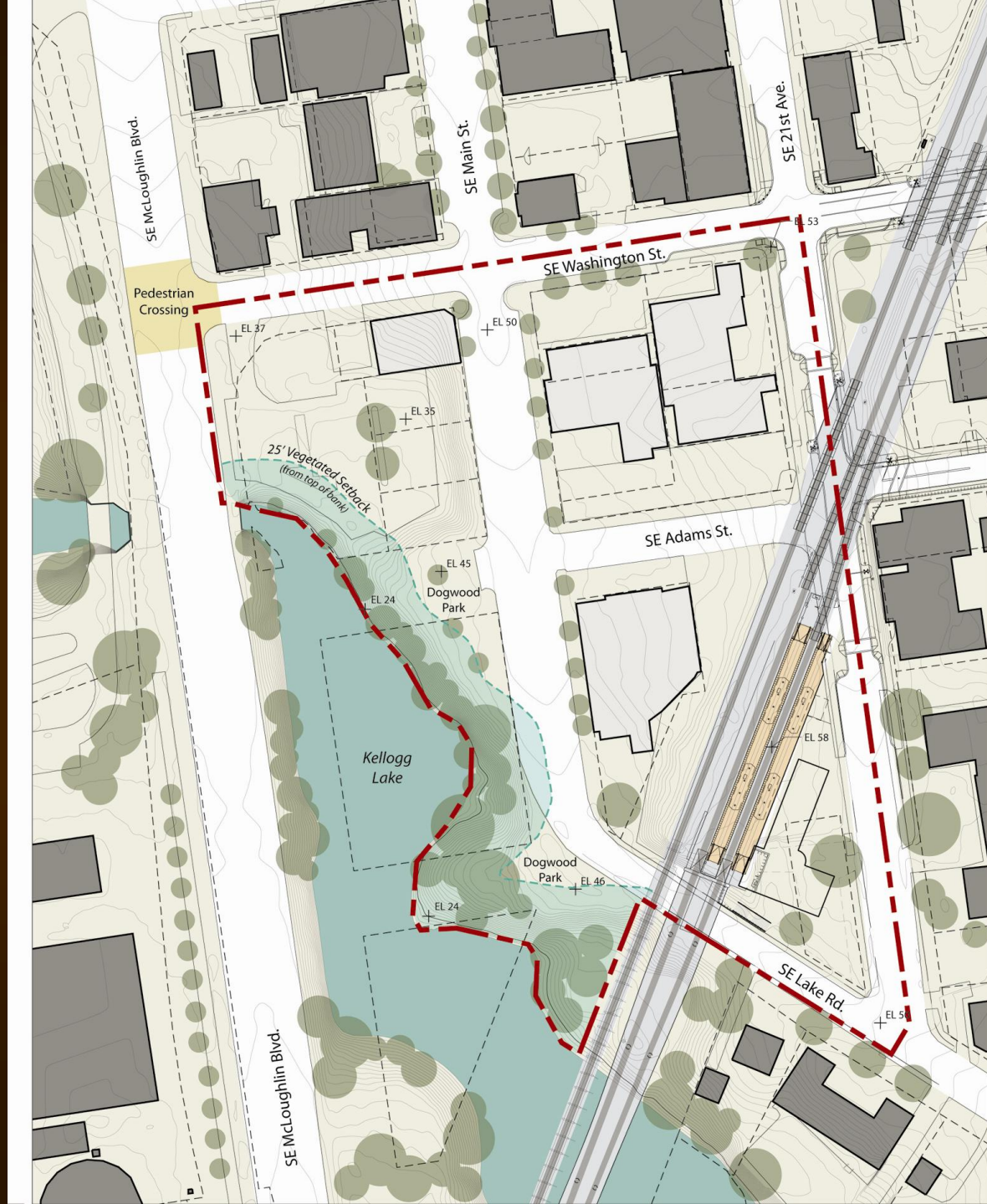


south downtown plan phases

City of Milwaukie civic improvements

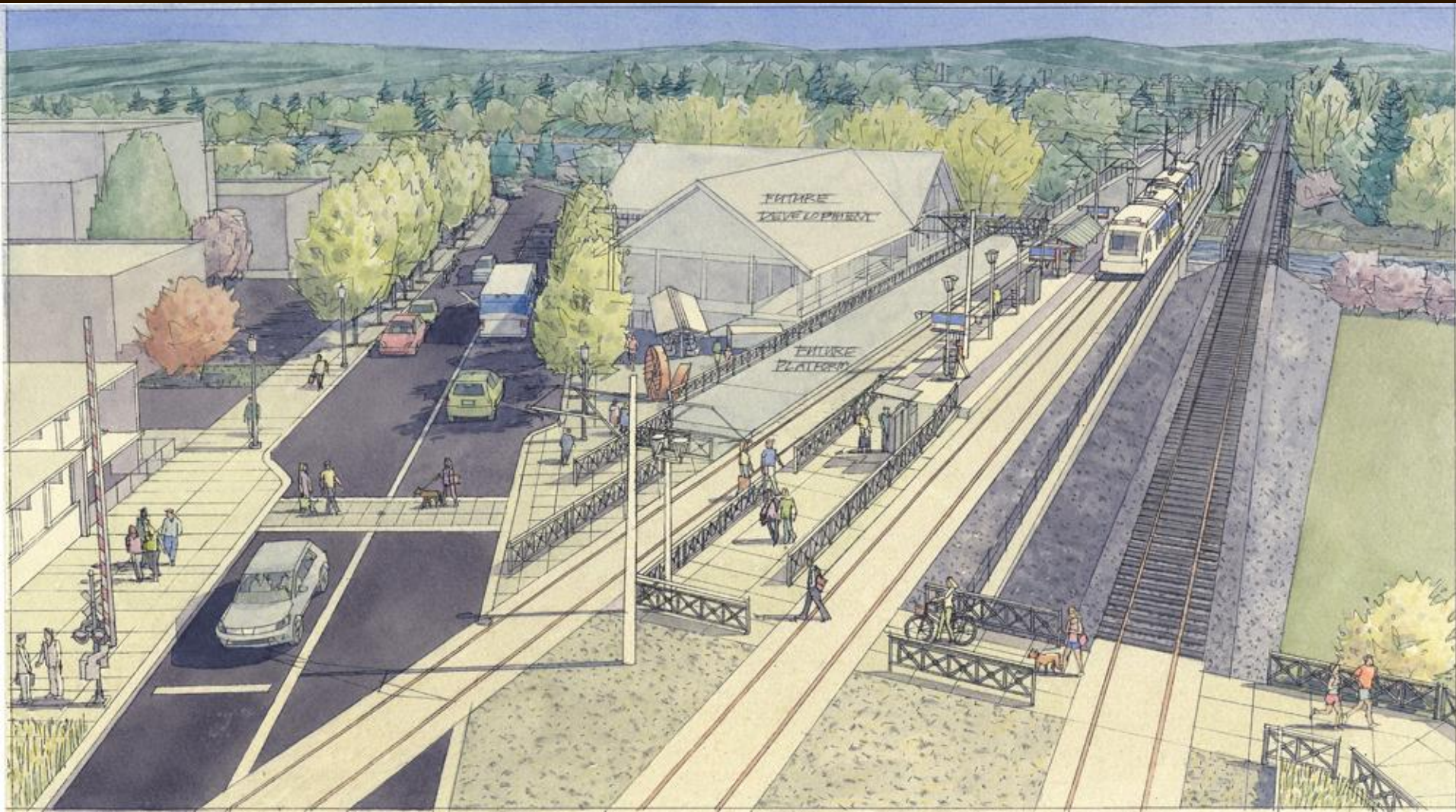


south downtown area

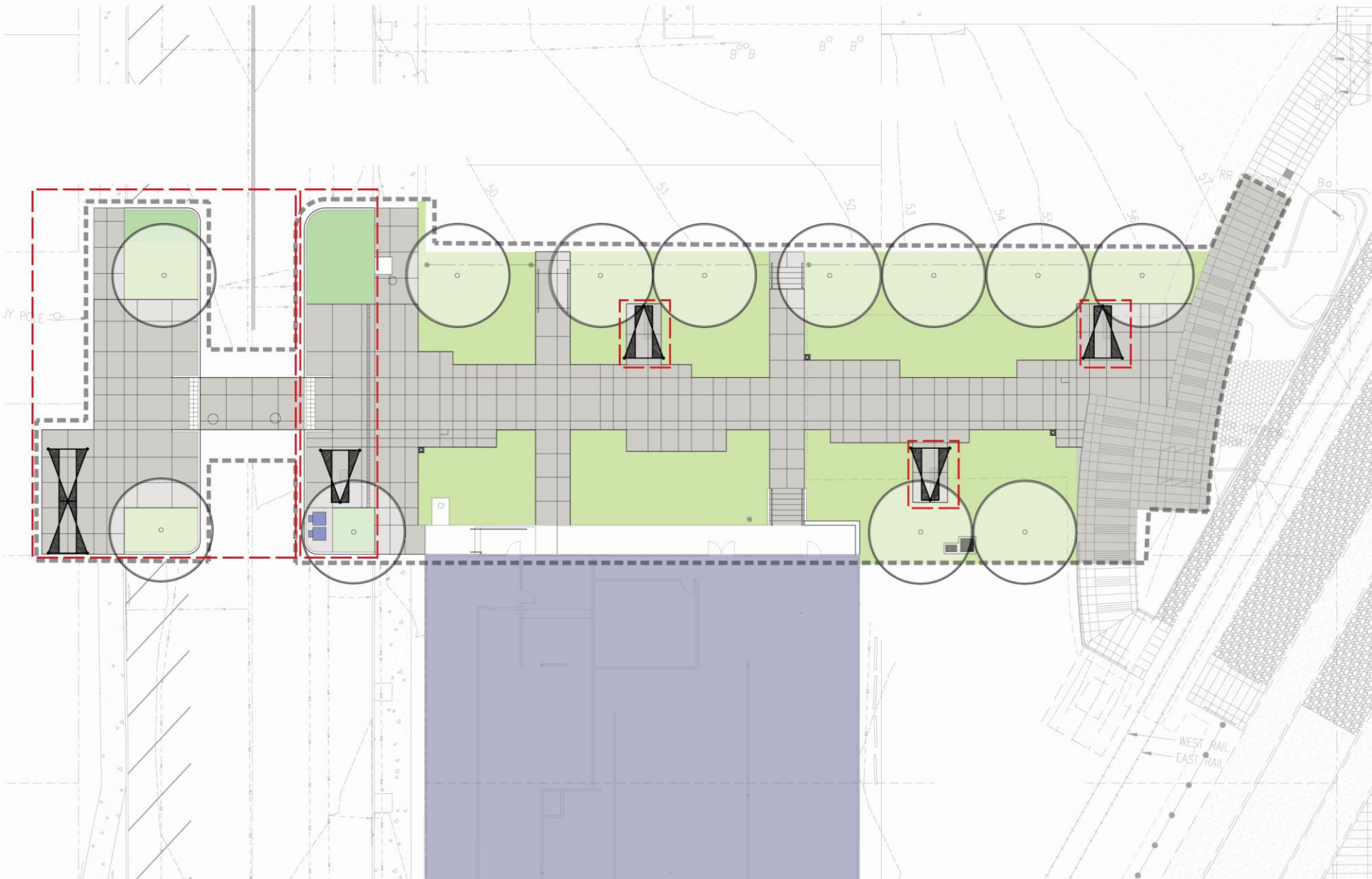


south downtown concept plan





Tri-Met station platform



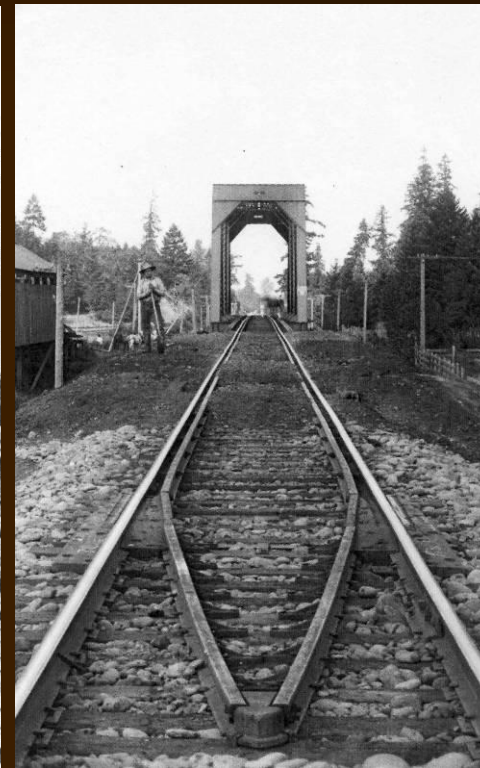
adams street site plan



Using Lighting and Materials to provide a story and points of interest along the heritage walk



adams street connector



Anchoring Adams Street with the history and essence of Milwaukie



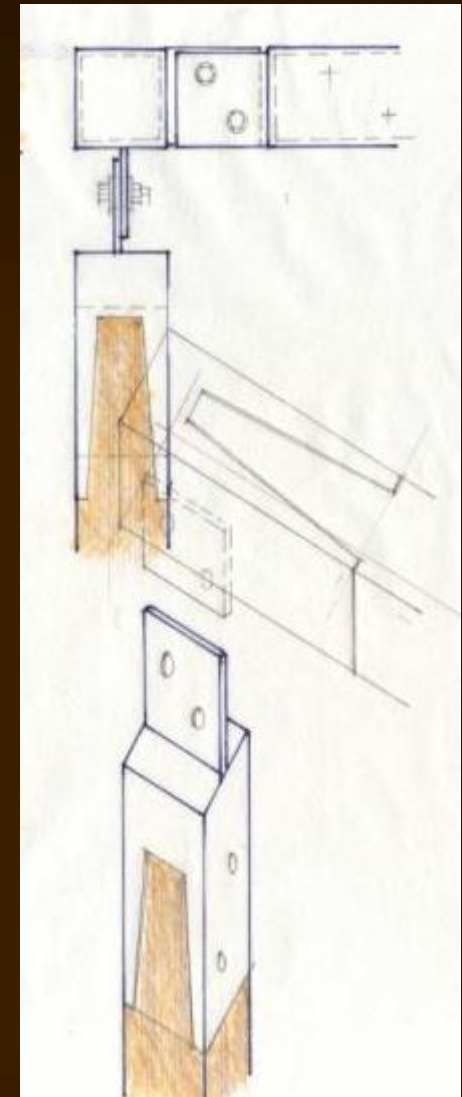
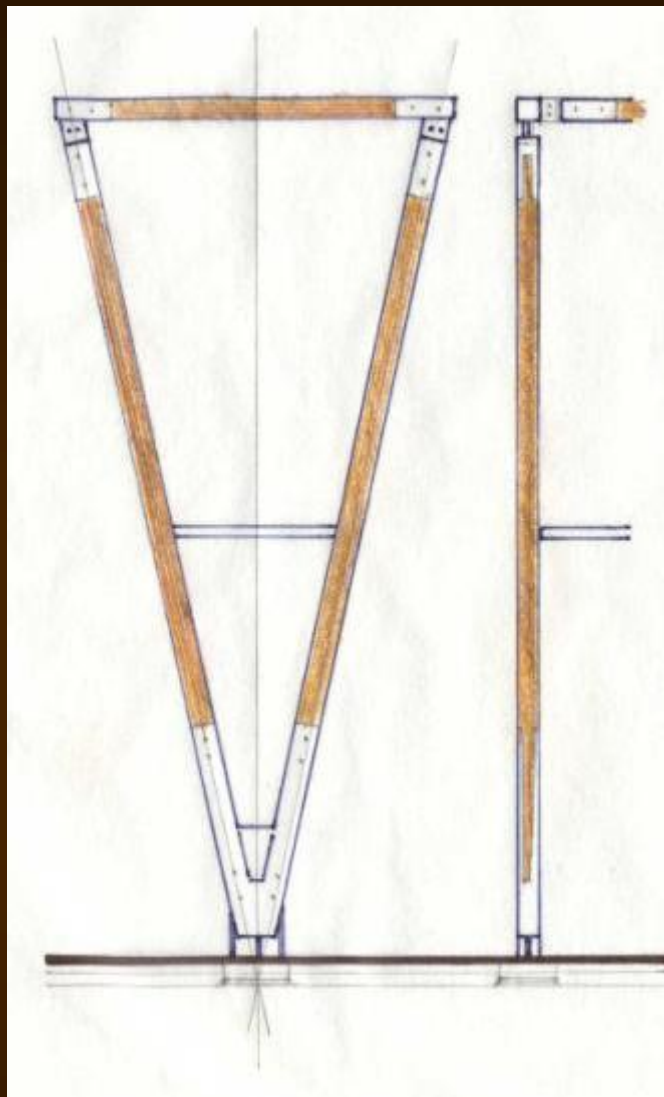
beacon – lantern design



Anchoring Adams Street to the context and materials of the nearby landscape



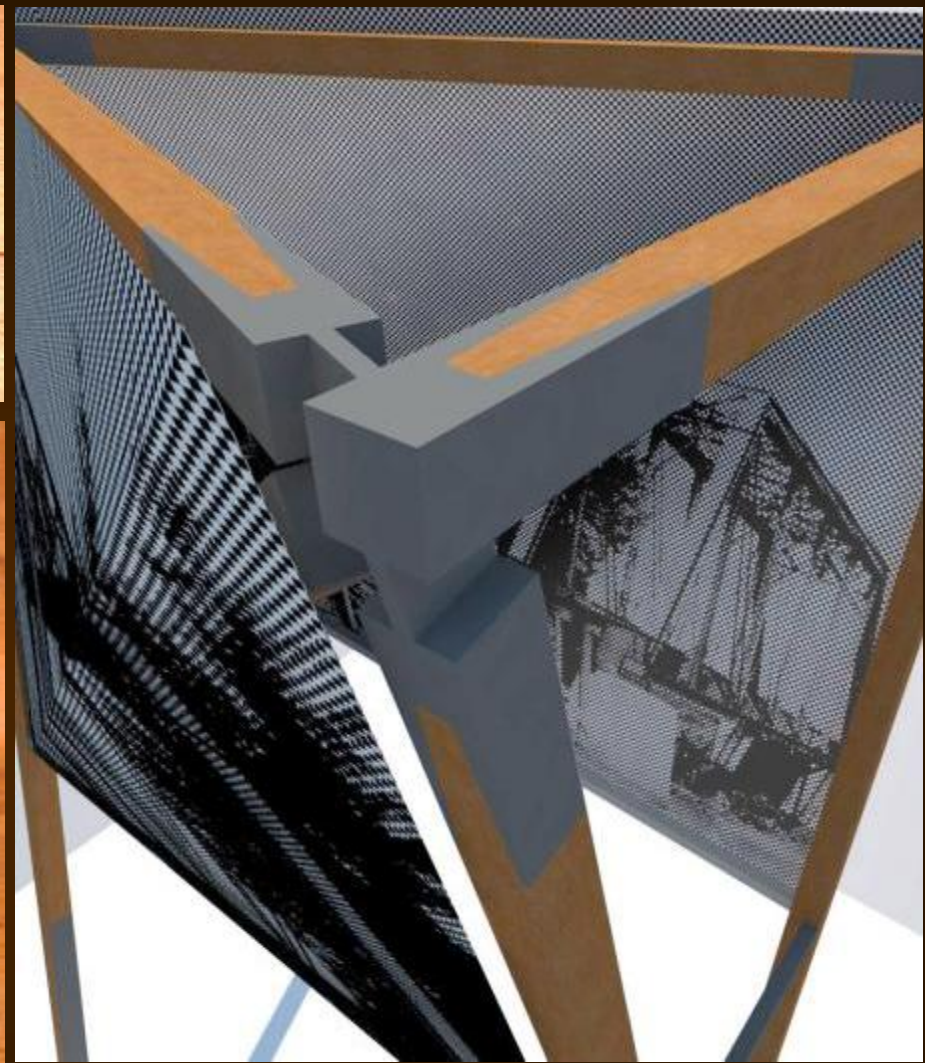
beacon – lantern design



Anchoring the lanterns to the history of Milwaukie's craft industries



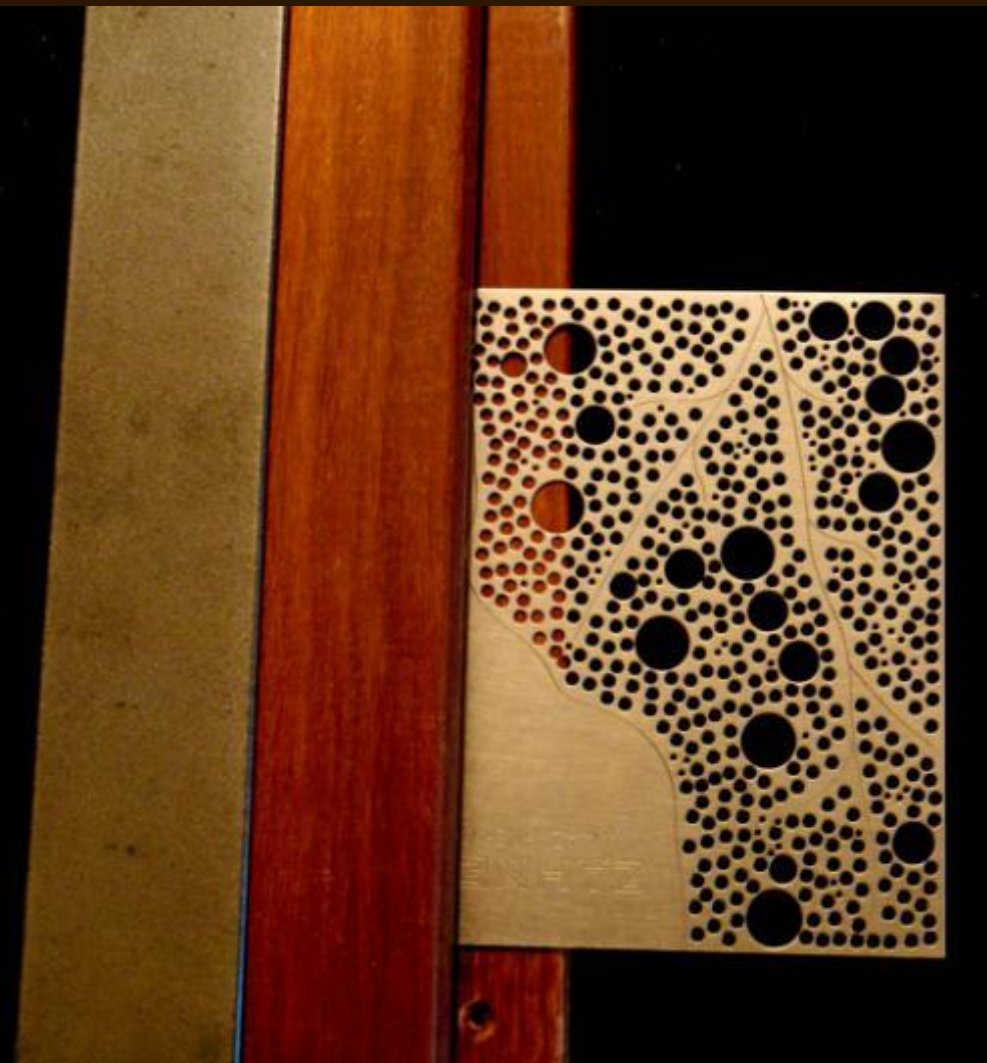
beacon – lantern design



Anchoring the lanterns to the history of Milwaukie's craft industries



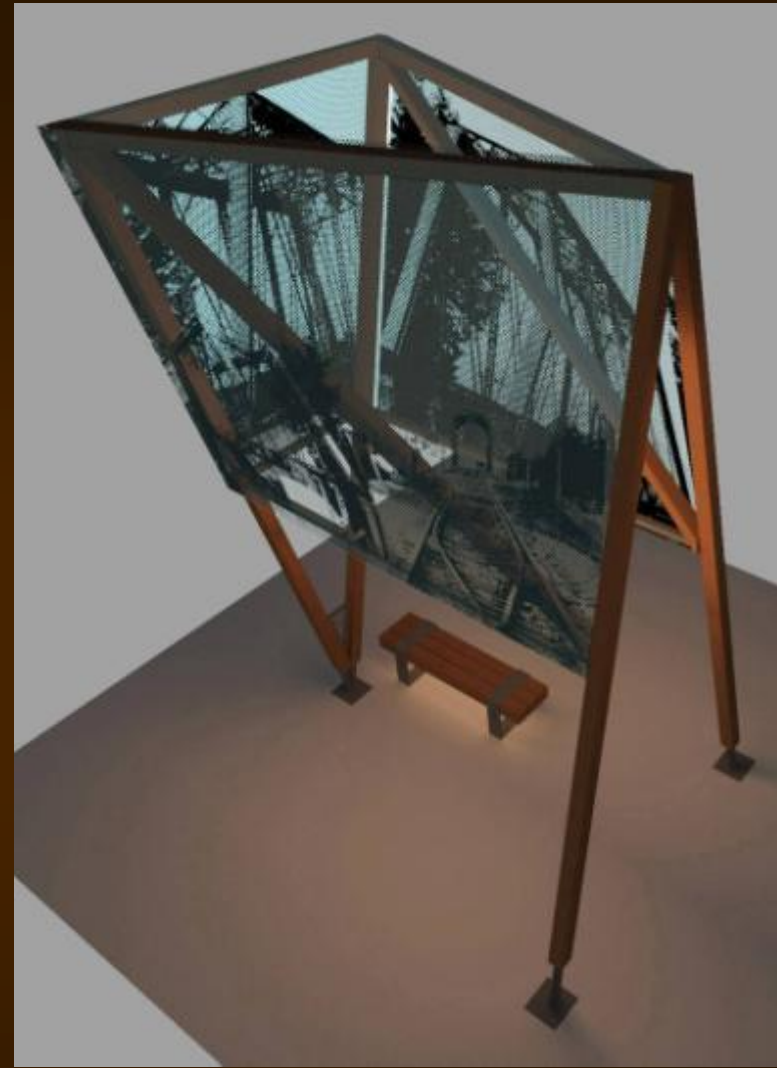
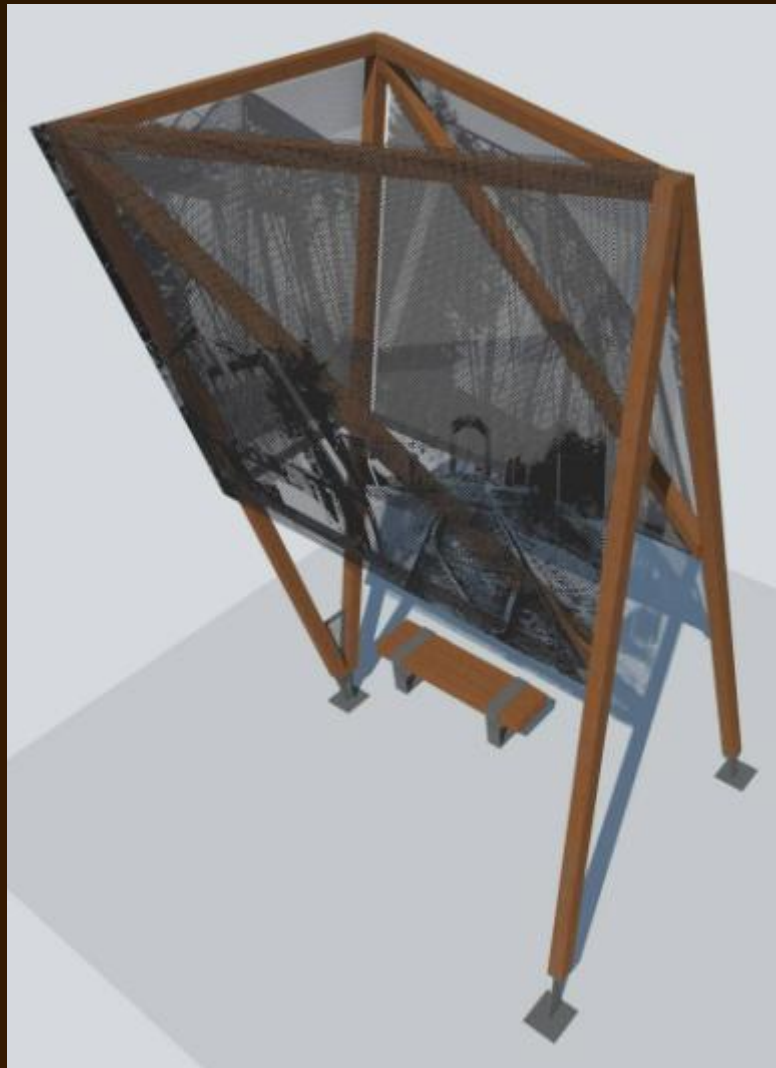
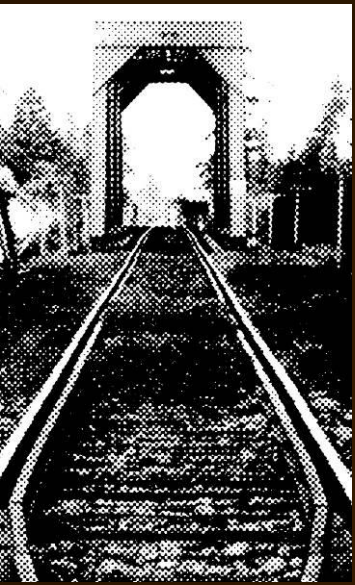
beacon – lantern design



Anchoring the lanterns to the history of Milwaukie's craft industries



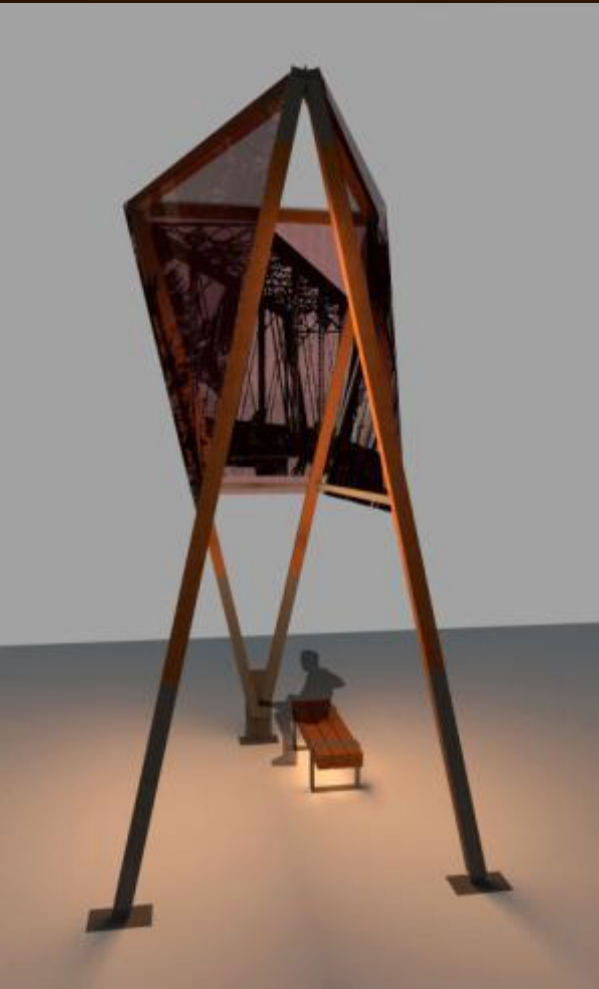
beacon – lantern design



Providing change and variety during daytime and evening hours



beacon – lantern design



Combining lighting, new technologies, and history



beacon – lantern design



To provide both everyday interest, and special seasonal or weekly public event space



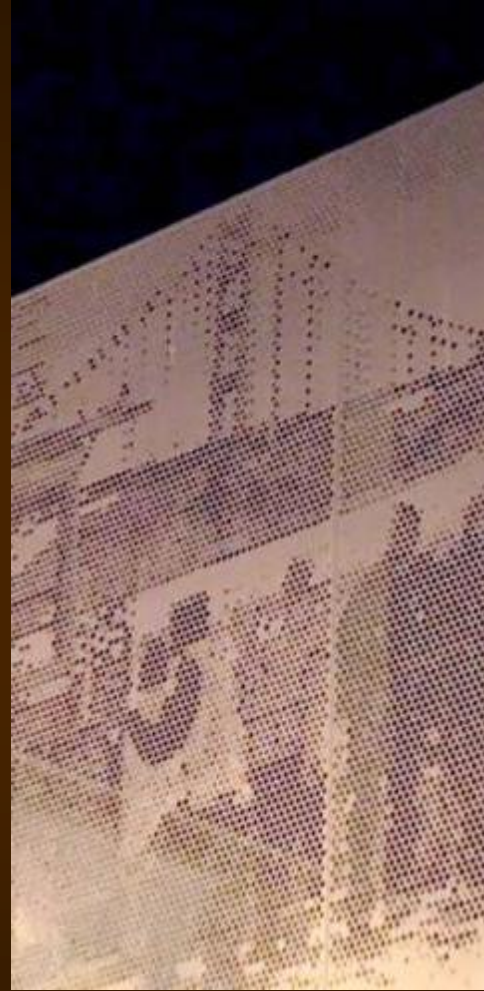
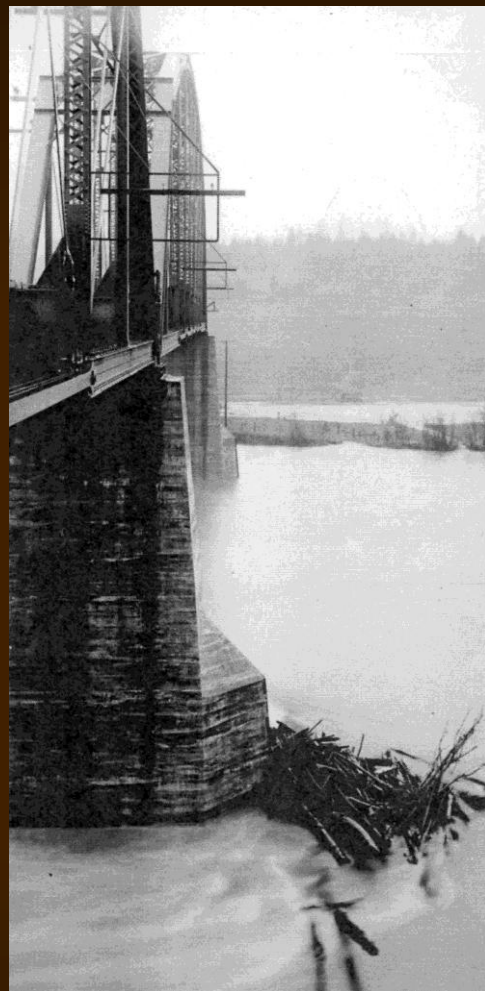
beacon – lantern design



To provide both everyday interest, and special seasonal or weekly public event space



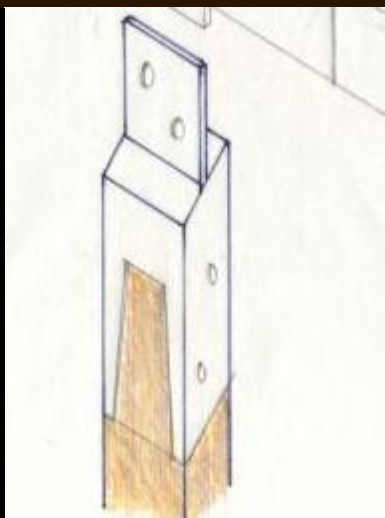
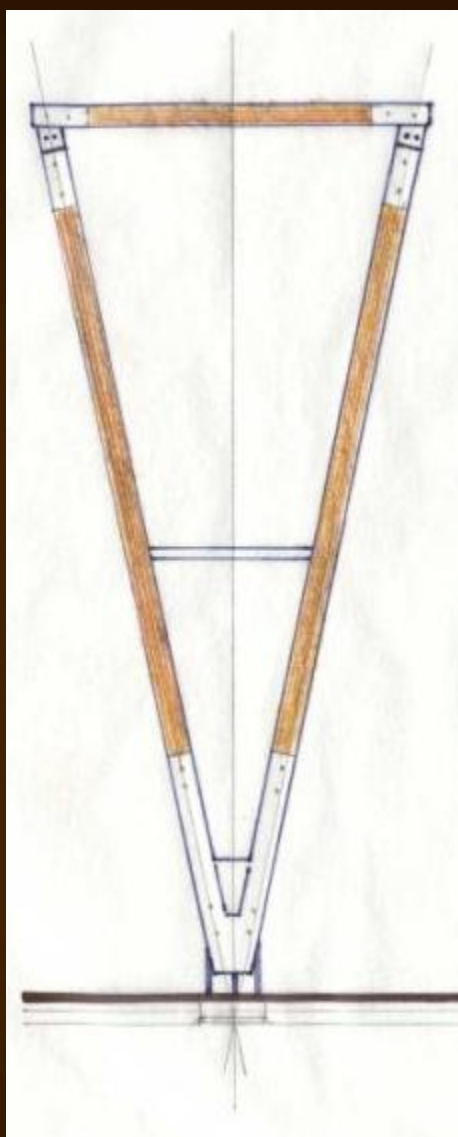
beacon – lantern design



Collected stories of Milwaukie told by the community through images and writing input, reviewed by DLC in spring to select themes, images refined and incorporated on lantern shades



historic image process



questions and discussion