



## Aspect Weekly Update

Seven Acres Development (Former LDM Site - ECSI #887)

WEEK 39: JULY 11 - JULY 15, 2022

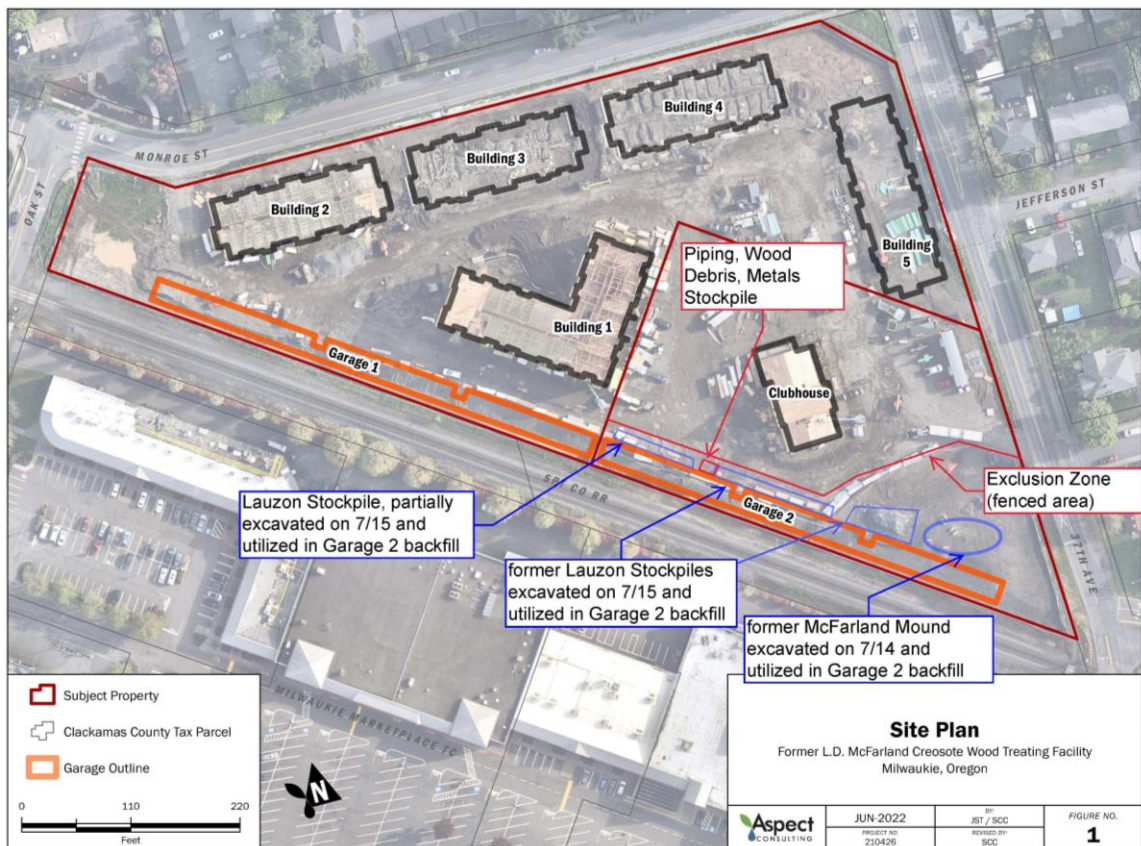
### ON-SITE ACTIVITIES

- Continued Parcel 1 PGE infrastructure installation.
- ROW utilities, stormwater facilities and demolition.
- Parcel 1:
  - Continued constructing Buildings 1, 2, 3, 4, and 5.
  - Poured Garage 1 retaining wall foundation. Continued constructing Garage 1 retaining wall forms and poured a portion of the wall (approximately 100 feet).
- Parcel 2:
  - Continued building envelope and interior buildout for Clubhouse.
  - Continued Garage 2 retaining wall drain mat installation.
  - Began backfilling Garage 2 retaining wall with McFarland mound and stockpiled Parcel 2 soil, in that order. McFarland mound wells were protected during the mound excavation.

- Completed semi-annual groundwater monitoring event.
- Aspect was on site on July 11, 12, 14, and 15 to conduct groundwater monitoring, attend onsite OAC meeting, and observe Parcel 2 backfill.
- Groundwater monitoring analytical samples were collected this week and sent to Apex laboratory for analysis.
- No waste was transported off site this week.

## PLAN VIEW PROGRESS

Construction work focused on Buildings 1 to 5 and Garage 1 Area on Parcel 1, and on the Clubhouse and Garage 2 Area on Parcel 2.



## KEY ONSITE ACTIVITIES PLANNED FOR NEXT TWO WEEKS

- Continue PGE infrastructure work on Parcel 1.
- Continue ROW utilities and storm facilities.
- Begin ROW curbs, sidewalk, and approaches.

- Parcel 1:
  - Complete mock-up construction.
  - Continue construction for Buildings 1, 2, 3, 4, and 5.
  - Complete Garage 1 retaining wall pour; anticipated to begin week of July 18.
- Parcel 2:
  - Continue Clubhouse building envelope and interior buildout. Begin Clubhouse storefront frame installation.
  - Continue Garage 2 retaining wall backfill.
  - Begin utility trenching; anticipated to begin late July.
  - Begin micropile installation; anticipated to begin week of July 25. GPR within micropile footprint; anticipated to begin July 20. Aspect will keep DEQ apprised of schedule.

## UPCOMING DELIVERABLES to DEQ and ACTION ITEM REQUESTS

- Semi-annual groundwater monitoring samples were delivered to Apex laboratory on July 13; anticipate analytical results by week of July 25. Aspect's report deliverable will follow.

## PHOTOS



7/15/22 McFarland mound excavated and utilized in Garage 2 retaining wall backfill, looking south (Parcel 2).



7/12/22 Semiannual groundwater sampling at mound well DMW-14, looking west (Parcel 2).