



Aspect Weekly Update

Seven Acres Development (Former LDM Site - ECSI #887)

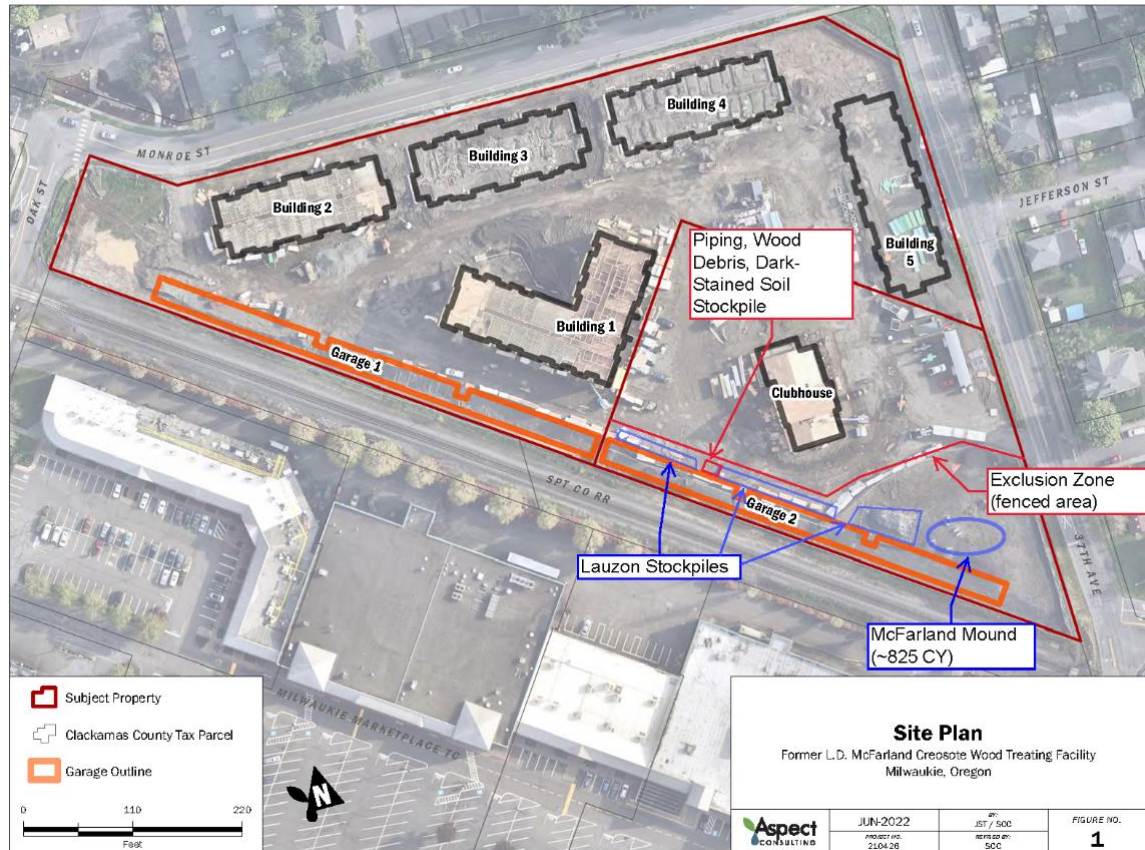
WEEK 38: JULY 5 - JULY 8, 2022

ON-SITE ACTIVITIES

- Continued Parcel 1 PGE infrastructure installation.
- ROW utilities, stormwater facilities and demolition.
- Parcel 1:
 - Continued mockup construction.
 - Continued constructing Buildings 1, 2, 3, and 4.
 - Continued constructing forms for Garage 1 retaining wall foundation.
- Parcel 2:
 - Continued building envelope and interior buildout for Clubhouse.
 - Continued curing Garage 2 retaining wall and prepared for drain mat installation.
- Aspect was not on site this week.
- No analytical samples were collected this week.
- No waste was transported off site this week.

PLAN VIEW PROGRESS

Construction work focused on Buildings 1 to 4 and Garage 1 Area on Parcel 1, and on the Clubhouse and Garage 2 Area on Parcel 2.



KEY ONSITE ACTIVITIES PLANNED FOR NEXT TWO WEEKS

- Continue PGE infrastructure work on Parcel 1.
- Continue ROW utilities and storm facilities.
- Parcel 1:
 - Complete mock-up construction.
 - Continue construction for Buildings 1, 2, 3, and 4.
 - Pour concrete footings for Building 5.
 - Pour Garage 1 retaining wall foundation; anticipated to begin week of July 11.
 - Begin forming Garage 1 retaining wall; pour wall.
- Parcel 2:

- Continue Clubhouse building envelope and interior buildout.
- Continue Garage 2 retaining wall construction; drain mat installation anticipated to begin on July 11.
- Begin backfilling with contaminated soils beneath Garage 2 area; anticipated to begin week of July 11.
- Begin utility trenching; anticipated to begin week of July 18.
- Begin micropile installation; anticipated to begin in late July. GPR within micropile footprint; anticipated to begin week of July 18. Aspect will keep DEQ apprised of schedule.
- Semiannual groundwater monitoring to be conducted by Aspect; anticipated to occur July 11-13.

UPCOMING DELIVERABLES to DEQ and ACTION ITEM REQUESTS

- Aspect is planning for Summer 2022 semiannual groundwater monitoring the week of July 11, with report to follow.

PHOTOS



7/7/22 Garage 2 retaining wall, looking west (Parcel 2).



7/7/22 Garage 2 retaining wall with covered stockpiles and Building 1 in the distance, looking east (Parcel 2).