



## Aspect Weekly Update

Seven Acres Development (Former LDM Site - ECSI #887)

WEEK 37: JUNE 27 - July 1, 2022

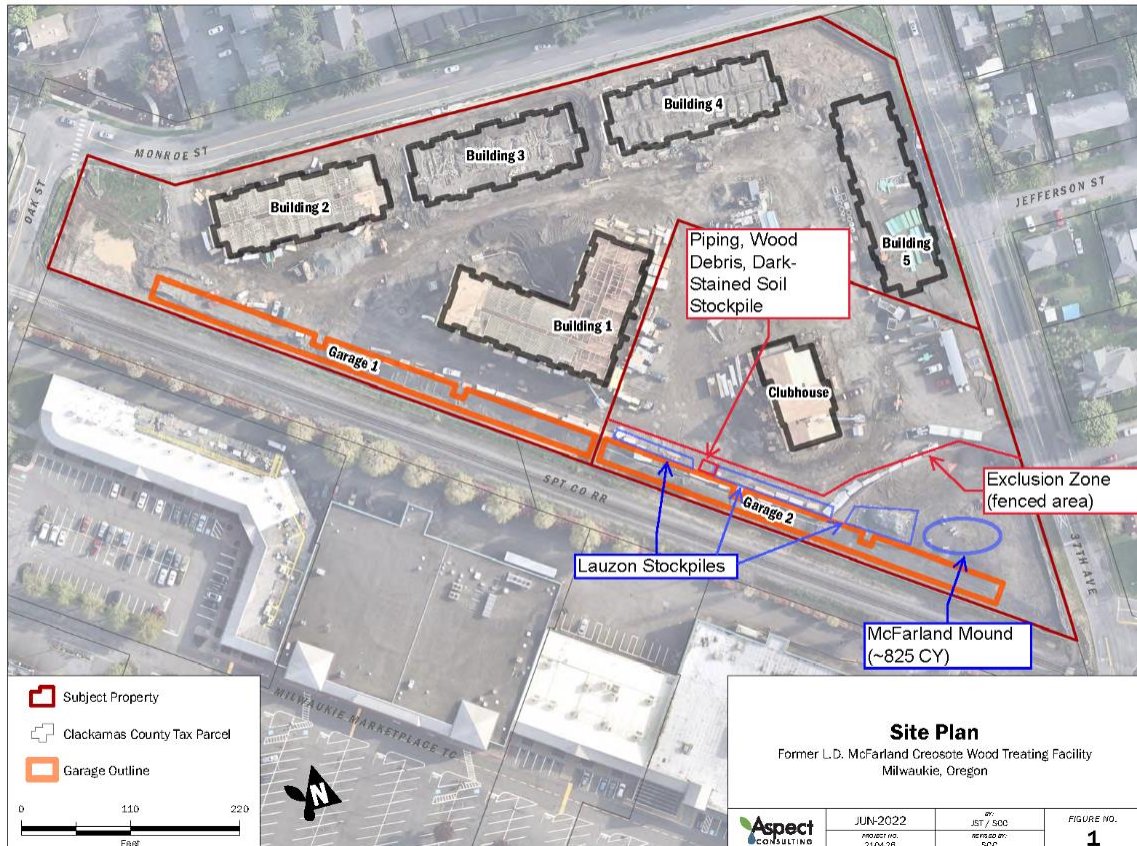
### ON-SITE ACTIVITIES

- Continued Parcel 1 PGE infrastructure installation.
- ROW utilities, stormwater facilities and demolition.
- Parcel 1:
  - Continued mockup construction.
  - Continued constructing Buildings 1, 2, 3, and 4.
  - Continued constructing forms for Garage 1 retaining wall foundation.
- Parcel 2:
  - Continued building envelope and interior buildout for Clubhouse.
  - Continued construction of Garage 2 retaining wall forms. Poured Garage 2 retaining wall.
- Point Environmental was on site on 6/30 to inspect erosion control measures.
- Aspect was not on site this week.
- No analytical samples were collected this week.

- No waste was transported off site this week.

## PLAN VIEW PROGRESS

Construction work focused on Buildings 1 to 4 and Garage 1 Area on Parcel 1, and on the Clubhouse and Garage 2 Area on Parcel 2.



## KEY ONSITE ACTIVITIES PLANNED FOR NEXT TWO WEEKS

- Continue PGE infrastructure work on Parcel 1.
- Continue ROW utilities and storm facilities.
- Parcel 1:
  - Complete mock-up construction.
  - Continue construction for Buildings 1, 2, 3, and 4.
  - Pour concrete footings for Building 5.
  - Pour Garage 1 retaining wall foundation; anticipated to begin week of July 5.
  - Begin forming Garage 1 retaining wall; pour wall.

- Parcel 2:
  - Continue Clubhouse building envelope and interior buildout.
  - Continue curing, stripping forms, and setting drain mats for Garage 2 retaining wall.
  - Begin backfilling with contaminated soils beneath Garage 2 area; anticipated to begin week of July 11.
  - Begin utility trenching; anticipated to week of July 18.
  - Micropile installation anticipated to begin in late July. Aspect will keep DEQ apprised of schedule.
  - Semiannual groundwater monitoring to be conducted by Aspect; anticipated to occur July 12-14.

## UPCOMING DELIVERABLES to DEQ and ACTION ITEM REQUESTS

- Aspect is planning for Summer 2022 semiannual groundwater monitoring the week of July 11, with report to follow.

## PHOTOS



7/1/22 Garage 2 retaining wall foundation forms, looking west (Parcel 2).



7/1/22 Parcel 2 Clubhouse construction progress.