



Aspect Weekly Update

Seven Acres Development (Former LDM Site - ECSI #887)

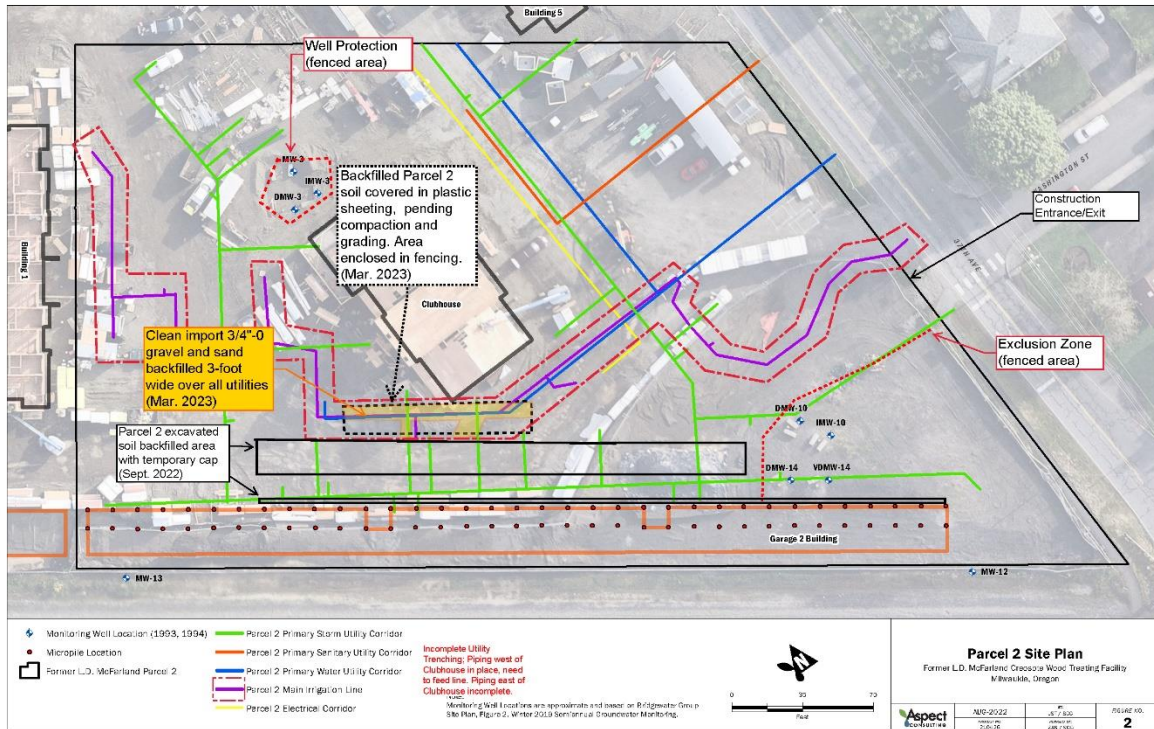
QUARTERLY UPDATE: JANUARY 1 - MARCH 31, 2023

ON-SITE ACTIVITIES

- Continued ROW electrical, irrigation, landscaping, and multi-use path work.
- Completed Phase 1 paving.
- Parcel 1:
 - Continued Buildings 1, 2, 3, 4 and 5 and Garage 1 construction.
- Parcel 2:
 - Continued Clubhouse MEP finishes and exterior concrete finishes. Completed Clubhouse dry wall hanging, cabinets and carpentry, elevator cab installation.
 - Completed Garage 2 framing and roofing. Continued siding and doors.
 - Completed electrical conduit utility trenching and tree well excavations.
 - Began Pool House concrete foundations & MEP.
 - Buried tree well excavated soil in parking south of Clubhouse. Area is covered in plastic sheeting, pending final cap.
 - Completed final well adjustments.
- Aspect was onsite on 1/25, 2/6, 2/9, 3/9, 3/15, 3/17, and 3/29 to oversee onsite activities. Aspect conducted semiannual groundwater monitoring on 2/13 and 2/14.
- Point Environmental was onsite on 1/9, 1/16, 1/19, 2/2, 2/6, 2/20, 2/27, 3/1, 3/9, 3/13, 3/24, and 3/29 to inspect erosion control measures.

PLAN VIEW PROGRESS

Parcel 2 construction work focused on Phase I pavement completion, Phase II pavement preparation, Clubhouse construction, Garage 2 construction, tree well excavations, soil management, and final well adjustments.



KEY ONSITE ACTIVITIES PLANNED FOR THE NEXT QUARTER

- Complete ROW electrical, signage, multi-use path, irrigation, and landscaping work.
- Complete Phase II paving.
- Parcel 1:
 - Complete Garage 1 and Buildings 1, 2, 3, and 4. Continue Building 5 construction.
- Parcel 2:
 - Complete Clubhouse construction
 - Complete the initial vapor intrusion sampling assessment at the Clubhouse.
 - Complete Pool House.
 - Complete Garage 2.
 - Complete all Phase II remedial action cap elements.

UPCOMING DELIVERABLES to DEQ and ACTION ITEM REQUESTS

- The Phase II Construction Close Report, UPRR and Parcel 2 Operation and Maintenance Plans, and Post-Construction Fact Sheet will be submitted to DEQ following Phase II remedial action completion.

PHOTOS



3/29/23 Parcel 2 utility and tree well excavated soil placed in parking stall footprint south of Clubhouse, outside clean backfilled utility trenches. Area is enclosed in fencing, covered in plastic sheeting, and pending compaction and subgrade preparation for final cap.



3/15/23 Parcel 2 tree wells excavated and backfilled with clean import landscape soil over orange landscape marker fabric.