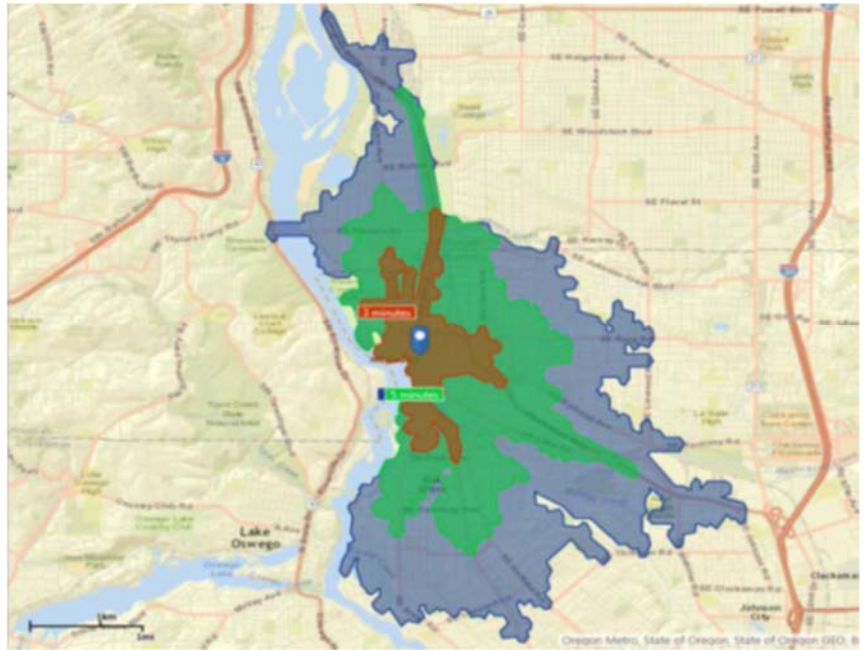


business opportunities in Downtown Milwaukie

customer profile

- trade area of over 44,000 people
- employee market of over 21,000 people within a five-minute drive
- median household income of over \$52,000



retail potential

- sales leakage of \$18 million or 69,000 square feet

priority businesses

grocery • food carts • restaurants
clothing store • electronics store

contact

Community Development Department

Phone: 503.786.7600

CommunityDevelopment@MilwaukieOregon.gov



CITY OF MILWAUKIE



MAX station at the south end of downtown • farmers market
3 vacant lots open to development • active business association
2 schools nearby • newly passed bond issue
visit www.MilwaukieOregon.gov for a complete market analysis