



CITY OF MILWAUKIE

Climate Action Update

City Council Special Session
December 12, 2023

Natalie Rogers

Climate and Natural Resources Manager



Climate Goals and 2020 GHG Inventory

MILWAUKIE'S CLIMATE ACTION GOALS

2030 NET-ZERO ELECTRICITY
Milwaukie has net-zero carbon emissions from electricity through strategic use, efficient technology, and carbon-free electricity generation like solar, hydro and wind power.



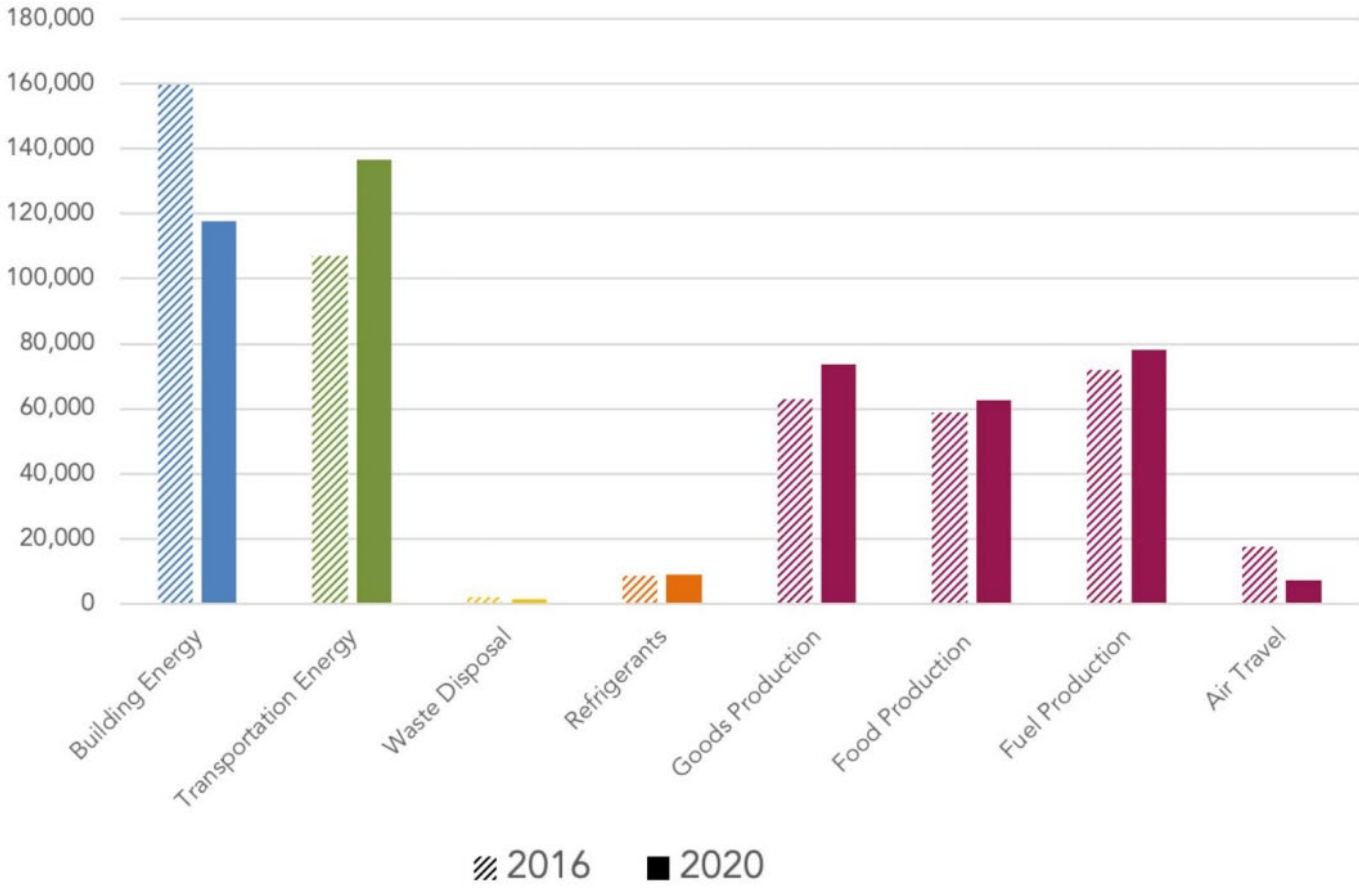
2035 NET-ZERO BUILDINGS
Milwaukie has net-zero carbon emissions from building energy by electrifying buildings, using carbon-free power, and choosing renewable fuel options.



2040 40% TREE CANOPY COVERAGE
Milwaukie supports a diverse and healthy tree canopy covering 40% of the city's landscape, providing habitat, public health, and watershed benefits to the community.



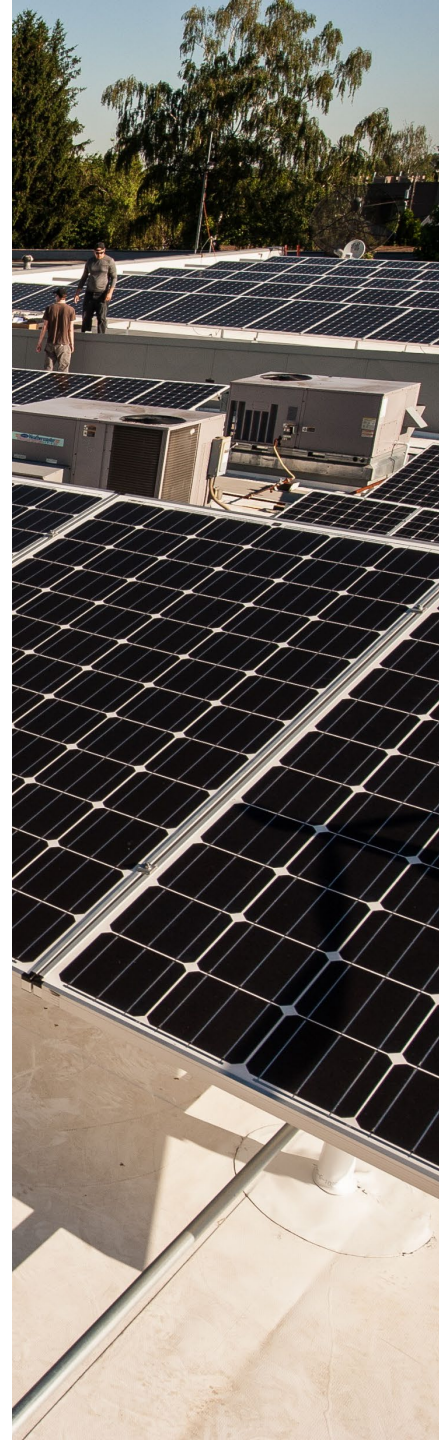
2045 CARBON NEUTRAL COMMUNITY
Milwaukie reduces and offsets emissions to reach net-zero emissions through climate-friendly city planning, energy generation, transportation, and community behavior.



Building Energy : Municipal Green Tariff

- Allows jurisdictions to make new community-specific opt-out voluntary product
- Multi-step process for product development and procurement
 - Step 0: PGE works with cities to create umbrella tariff
 - Step 1: PGE submits tariff to PUC
 - PUC regulatory approval process w/ public review
 - Focuses on funding and power purchase agreements (PPA)
 - City testifies support/concern to PUC
 - Tariff approval \neq product development
 - Step 2 : City develops Participation Agreement (PA)
 - Outlines product design, PPA details, rates
 - Governing body
 - PUC review and approval process uncertain

CAP Action: Work with PGE to become 'net zero' from electricity



Building Energy : Building Performance Standards

- Partnership with earth advantage, new buildings institute and regional governments
 - City receiving \$240k in grant dollars for CY24-26
 - Scope being defined, includes building energy outreach
- Exploring reporting and benchmarking standards for existing buildings
 - Resilient and Efficient Codes Implementation (RECI) – US DOE
 - HB 3409 Oregon Energy Performance Standard policy (>35k sf)
 - Tier 1: commercial
 - Tier 2: multifamily residential, schools, hospital
 - ODOE virtual stakeholder meeting: TOMORROW! 12/13/23 at 10am:
www.oregon.gov/energy/save-energy/Pages/BPS.aspx
 - Large square footage thresholds excludes many Milwaukie buildings

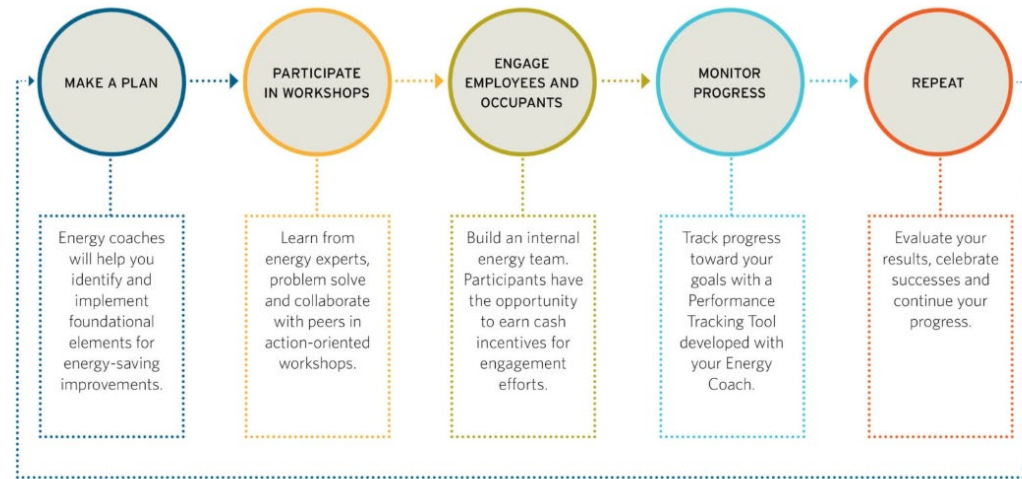
CAP Action: Adopt a commercial and residential building energy score program based on the City of Portland's program



Building Energy : Strategic Energy Management

- Energy Trust of Oregon Commercial SEM program
- Online SEM account profile manages building reporting, incentives
- Monthly SEM meetings with ETO
- New city hall – one year benchmarking, lighting upgrades, HVAC

How does SEM work?



To learn more about SEM call 1.866.605.1676 or email energymanagement@energytrust.org.



Vehicles and Fuels: Municipal EV + Charging Stats

- City continuing to transition fleet to electric vehicles (EVs)
 - 5 Nissan Leafs for administrative use across departments
 - 2 Ford Lightnings and 1 Chrysler Pacifica PHEV for Public Works
 - 1 Chrysler Pacifica PHEV for City Hall
 - 1 Ford Mustang Mach-e, 1 Nissan Leaf, 1 Chrysler Pacifica PHEV and 1 Tesla Model 3 for the Police Department
- Three public chargers at city facilities and one on Jackson St.
- Facilities have EV chargers for operations

CAP Action: Optimize the City's light duty fleet and replace the least efficient vehicles with more efficient vehicles



Vehicles and Fuels: PGE On-Pole Chargers

- PGE has completed installation and electrification of 21 on-utility pole chargers (4 'study/demo', 17 'pilot phase')
- City working with PGE on outreach
- PGE interested in next phase of chargers in city

Pole #	Street Address
D1136A 5634	11400 SE 34th Ave, Milwaukie, OR 97222, USA
D1136A 5636	11261 SE 34th Ave, Milwaukie, OR 97222, USA
D1136B 2562	10744 SE 29th Ave, Milwaukie, OR 97222, USA
D1136D 3658	11888 SE 35th Ave, Milwaukie, OR 97222, USA
D1125A 2053	3304 SE Filbert St, Milwaukie, OR 97222, USA
D1125A 2055	3424 SE Wake St, Milwaukie, OR 97222, USA
D1125A 6150	4103 SE Olsen St, Milwaukie, OR 97222, USA
D1125A 2072	3406 SE Filbert St, Milwaukie, OR 97222, USA

D1125A 5013	3832 SE Filbert St, Milwaukie, OR 97222, USA
D1136C 2834	11984 SE 28th Ave, Milwaukie, OR 97222, USA
D1125A 3281	3511 SE Olsen St, Milwaukie, OR 97222, USA
D1230A 978	9509 SE Wichita Ave, Milwaukie, OR 97222, USA
D1231C 8729	11691 SE 48th Av, Milwaukie, OR 97222, USA
D1125A 4539	3720 SE Filbert St, Milwaukie, OR 97222, USA
D1136C 2834	11984 SE 28th Ave, Milwaukie, OR 97222, USA
D1136B 2562	10744 SE 29th Ave, Milwaukie, OR 97222, USA
D1125A 811	3326 SE Roswell St, Milwaukie, OR 97222, USA
Demo	
D1136B 984	10658 SE 28 th Ave.
D1136B 3060	10777 SE 28 th Ave.
D1136B 2544	10888 SE 29 th ave.
D1136B 408	2501 SE Washington St

*CAP Actions: Support outreach efforts to encourage shift to electric vehicles;
Create a program to install electric vehicle charging infrastructure at multi-family housing complexes*



Natural Resources: Stormwater System Plan

- Update to Stormwater System Plan underway
 - PW Director leading system plan update process
 - Evaluation and strategies for stormwater utility infrastructure
 - Climate-forward projections for hydrologic modeling
 - Suggestions for stormwater design standards
 - Est. completion in CY 2025

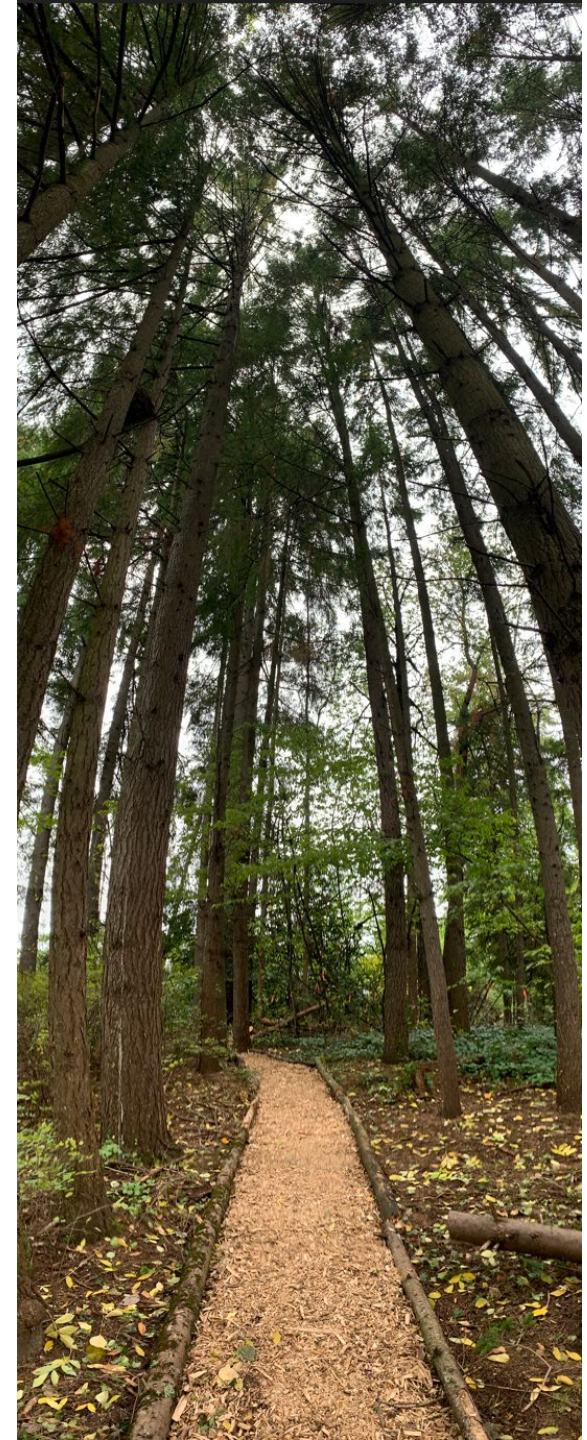
*CAP Actions: Adjust code to require on-site stormwater storage and water filtration before release that meets future conditions
Update stormwater masterplan*



Natural Resources: Tree Code Update

- Update to public and private tree code
 - Structural and phrasing for clarification/readability
 - Closing enforcement and applicability loopholes
 - E.g. phrasing of violation sections
 - Working with code compliance and planning staff
 - Bringing back to council work session in March 2024
 - Questions? Contact Courtney Wilson, urban forester at:
 - urbanforest@milwaukieoregon.gov, 503-786-7655

CAP Action: Increase tree canopy coverage to 40% by 2040



Thank you!

Natalie Rogers

Climate and Natural Resources Manager

RogersN@milwaukieoregon.gov

503 786 7668

Peter Passarelli

Public Works Director

PassarelliP@milwaukieoregon.gov

Learn more at
milwaukieoregon.gov/sustainability

