

WS 1. 6/6/23
Presentation

SCADA Update

June 6, 2023



What is SCADA

- Supervisory control and data acquisition (SCADA) is a system of software and hardware elements that allows industrial organizations to:

Secondary communication is also IOT, but at a lower bandwidth. WAN2

The lower bandwidth will not support remote terminal operations at TP235, TP47, or W6-Z3

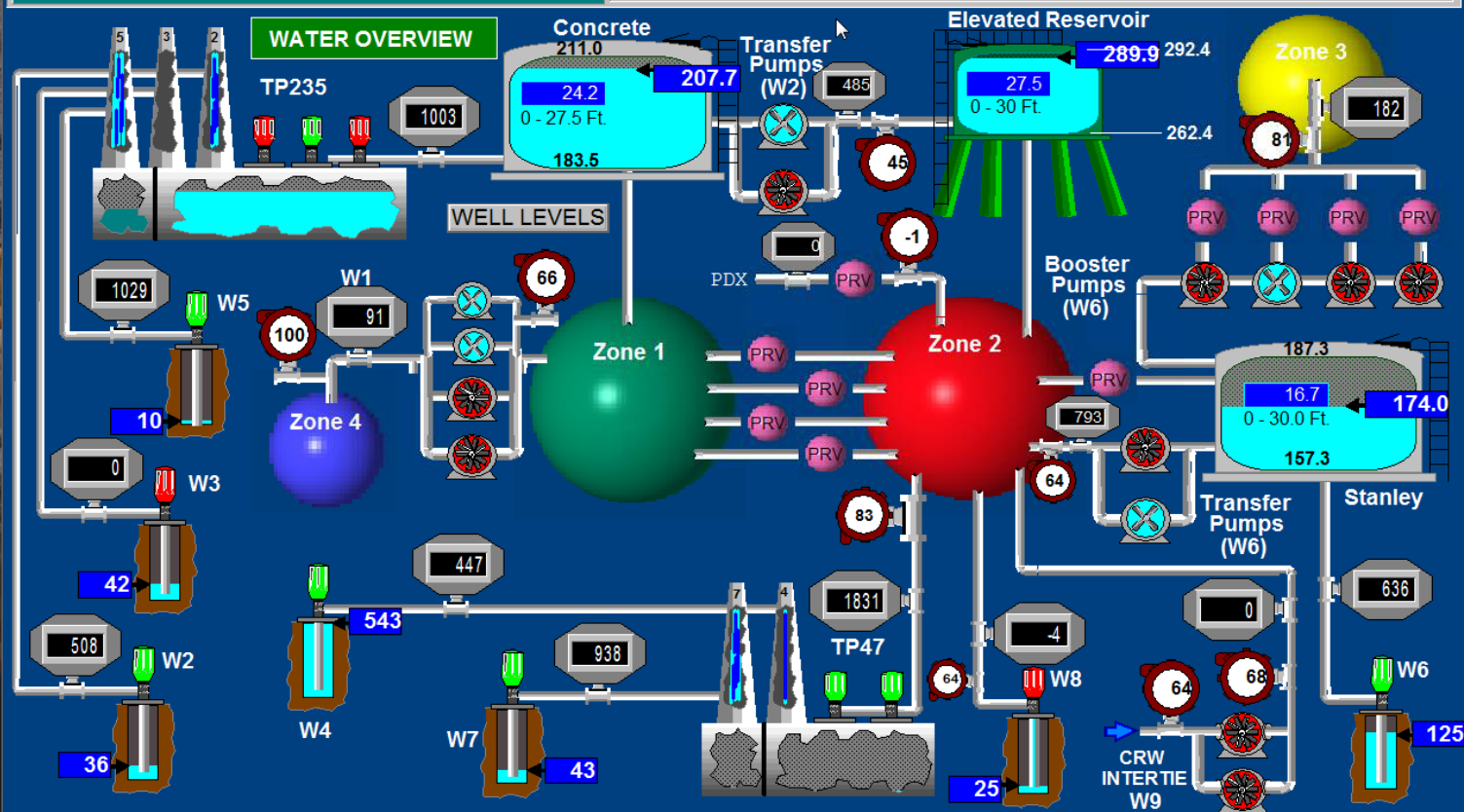
- Control industrial processes locally or at remote locations
- Monitor, gather, and process real-time data
- Directly interact with devices such as sensors, valves, pumps, motors, and more through human-machine interface (HMI) software
- Record events into a log file



TP235	W2	W5	W7	W10	S3
TP47	W3	W6	W8	S1	S5
W1	W4	W6TRND	W9	S2	S6

Items in Summary 4 Unack Alm: 0, Sup: 0 User: VISITOR

Login	Logout	Alarm-Water	Water	Water Setpoints	System
Waste	Alarm-Waste	Waste Setpoints	N/A	FUTURE	TRENDS



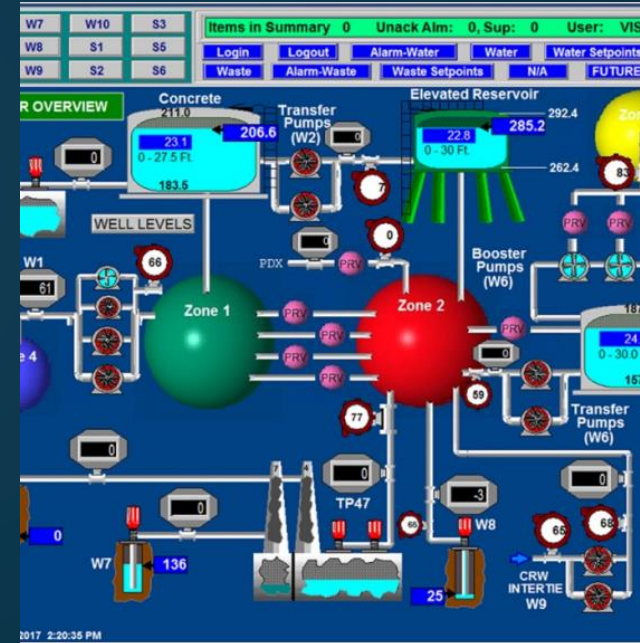
Print Screen

Tuesday, May 30, 2023 6:59:02 AM



SCADA – Water and Wastewater

- Completed SCADA Master Plan – July 2019
- Awarded Contract for Design Services and SCADA Application Development - 2020
 - \$470K
 - Initially Planned two phases
 - Communication
 - Automation and Control
- Bid Communications Infrastructure
 - May 2022
 - No Bid
- Consolidated Phases – Bids Due May11
 - bid from TSI for \$1.928M
 - Award June 6th, 2023
- 15 -18 months of work after award



Full System Features Supported

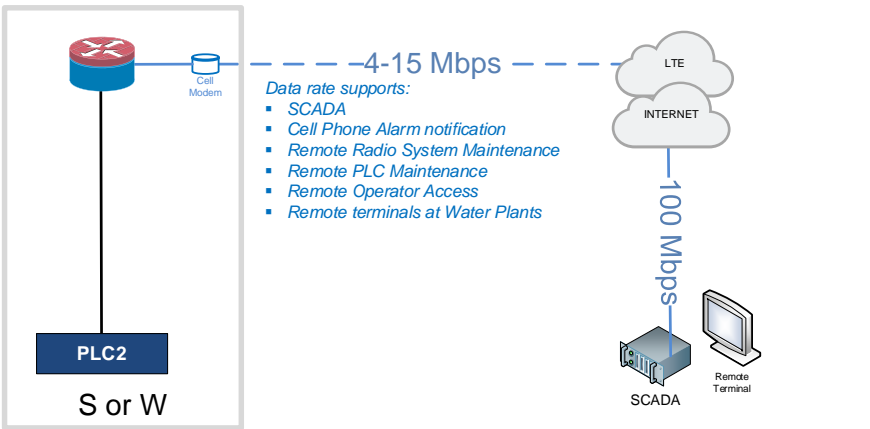
(Same communications as Public Safety Mobile)

- Communications design brings Milwaukie up to current standards for Municipal Water System Management
 - *Same level as public safety*
 - *Multiple layers of redundancy*
 - *IOT – Internet of Things*
- Remote management and access allows operations to perform their duties from:
 - *Work desk in office*
 - *Mobile from utility vehicles*
 - *Home*
- Remote management = centralized management
 - *Can manage any system from any location*
 - *Eliminates windshield time for on or off hours response*

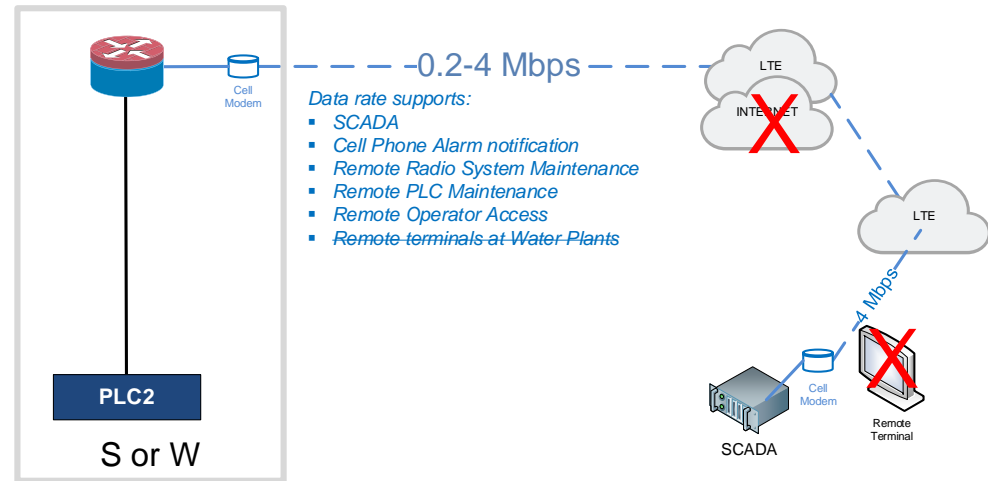
Full System Features Supported - IOT

(Same communications as Public Safety Mobile)

Primary Communication: 4–15 Mbps

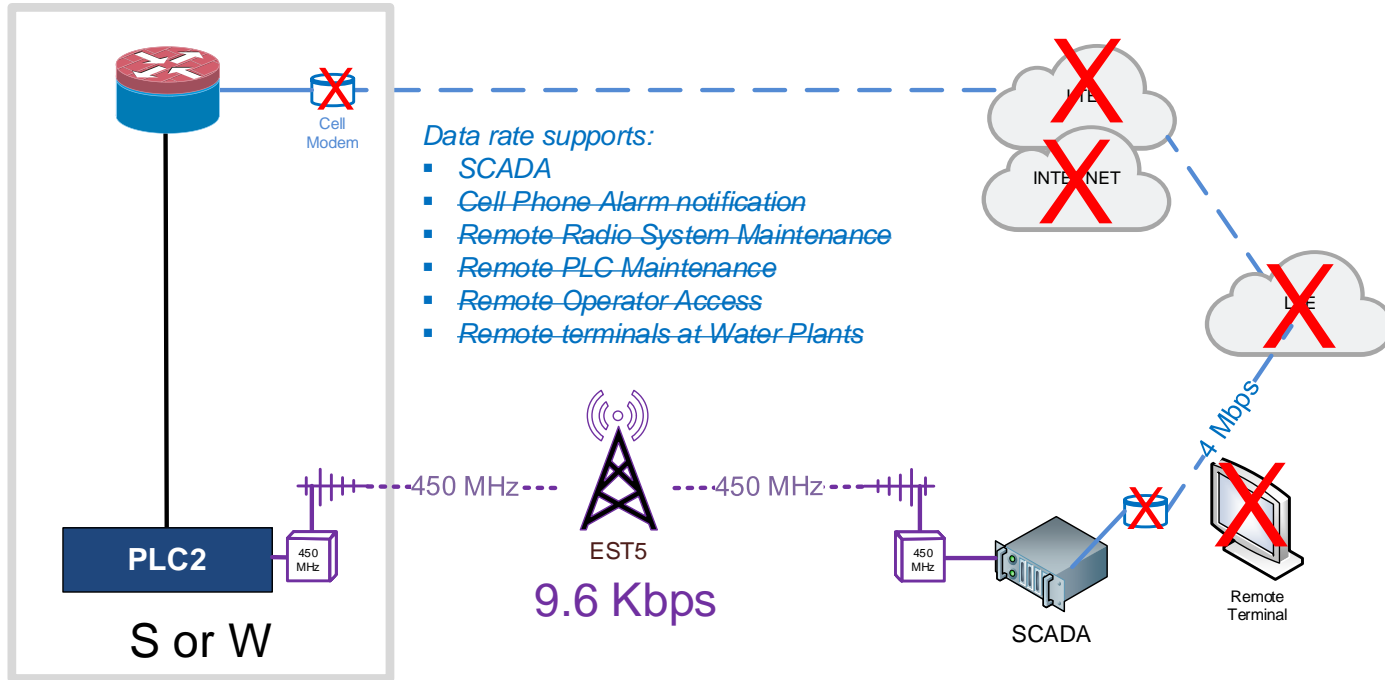


Communication if Internet Fails: 200 Kbps-4 Mbps



Add Alternative Bid

Communication if Internet and LTE Fails: 0.009.6 Mbps



Questions



Contact Us

Peter Passarelli

Public Works Director

passarellip@milwaukieoregon.gov

