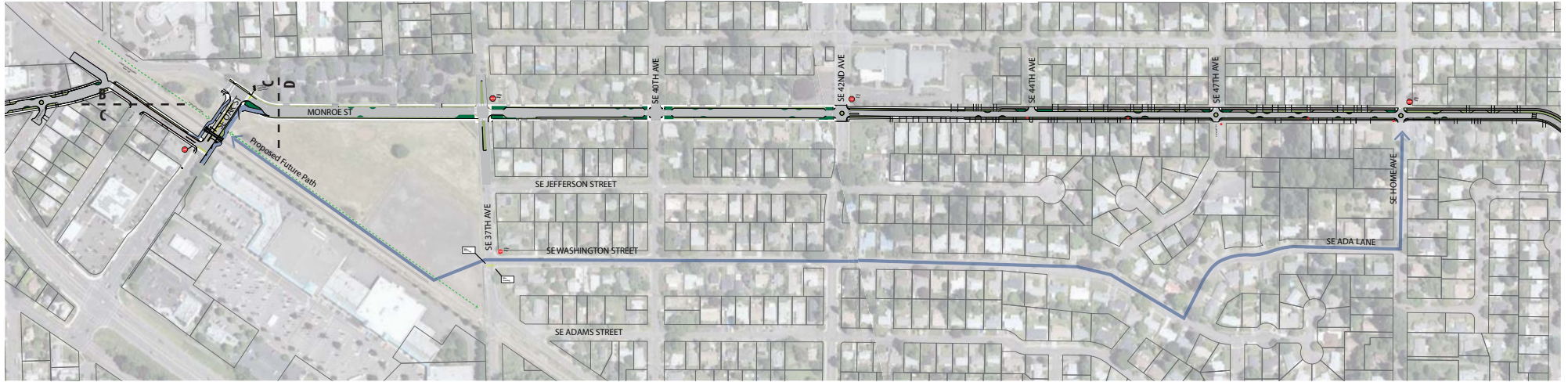


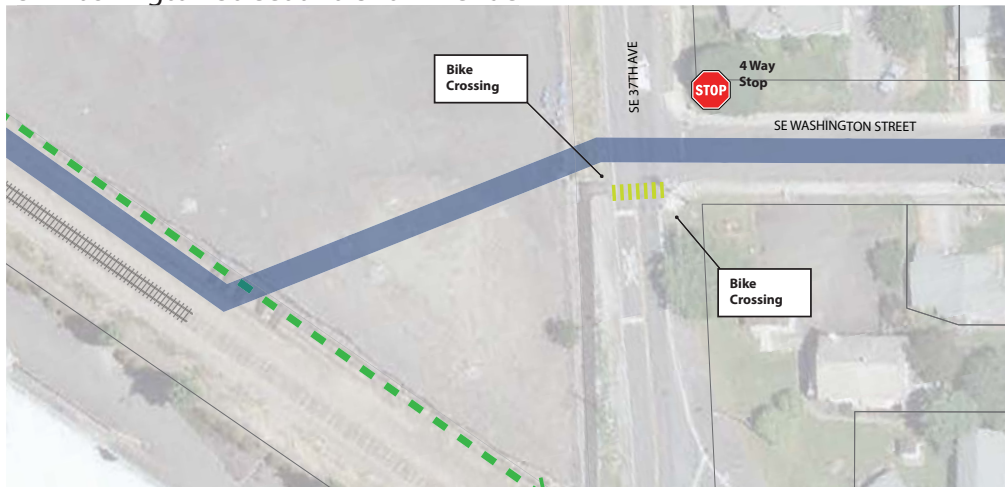
Monroe Street Neighborhood Greenway

Draft

SW Washington Street
Alternative



SE Washington Street and 37th Avenue



Partial diverter at 42nd Avenue



Legend

- Proposed Sidewalk
- Proposed Pervious Asphalt Walk
- Proposed Pervious Pavement
- Existing Landscape
- New Landscape Strip
- Potential BioRetention Area
- Curbed Chicane
- Shared Path
- Bike Sharrow
- Existing Fire Hydrant
- ADA Ramp
- Activated Signal Sign
- New No Parking
- Existing No Parking
- New Parking
- Concrete Curb
- Existing Edge of Pavement



Draft
3.18.2015