



2 Councilor Hedges: Donate a bike for a child

3 Free Leaf Drop dates in November!

7 Salmon habitat created at Tacoma

City realizing returns on light rail investment

With Milwaukie light rail construction well underway, residents are beginning to see the local improvements constructed by the project.

Milwaukie's \$5 million investment pays a dividend of \$15 million in local capital improvements.

Projects include rebuilt and widened sidewalks, a new section of the Trolley Trail between River Road and Park Avenue, three reconstructed railroad crossings with the safety improvements required for the City's Quiet Zone designation, undergrounded utilities in part of the Downtown, replacing older water and sewer lines, trees planted at Kronberg Park and habitat restoration at Crystal Creek and Johnson Creek.

Many of these items would otherwise have gone unfunded or been paid for by Milwaukie residents and businesses. All local improvements will be completed by the time the Milwaukie light rail line opens in 2015.



MILWAUKIE'S LOCAL LEADERS Kids clean-up Milwaukie

More than 20 local kids took to Milwaukie's downtown streets and helped collect more than 600 pounds of yard debris and 400 pounds of garbage on Oct. 5th.

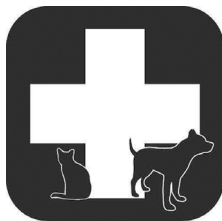
Kids from Riverside Elementary School, Cub Scout Troop 181, Milwaukie High School and Happy Valley Middle School all worked to pick up trash, pull weeds and trim blackberry bushes. In total, more than 60 volunteers aided the effort.

"I was really impressed so many kids were eager to contribute and help clean-up our town," said Beth Ragel, Milwaukie's volunteer coordinator. "It's exciting to see more and more groups getting involved with events like this in Milwaukie, especially our younger community members. We plan to have a big event like this at least twice a year - every April and October."

The event was sponsored by: Milwaukie Rotary Club, Willamette View, Milwaukie Presbyterian Church, Historic Milwaukie NDA, Warrior Room, Painted Lady Coffee, Cha Cha Cha, Starbuck's Coffee, Subway, Pietro's Pizza, Bob's Red Mill and Waste Management.

If you'd like to learn more about the variety of volunteer opportunities with the City of Milwaukie, or have an idea you'd like to get off the ground, contact Beth at ragelb@MilwaukieOregon.gov or 503-786-7568.

Free emergency pet preparedness classes



If you share your life with a Fido, Fluffy, or even a Ferdinand, you won't want to miss the series of free pet classes the Clackamas Fire District #1 is hosting that focus on preparing you and your pets for emergencies.

Nov. 10th, 1 - 4:30 p.m., Preparing for Disasters Great & Small: Why & How to Prepare Your Animals

Nov. 17th, 1 - 4:30 p.m., Canine Communication & Pussycat Posture: Animal Handling & Body Language

PLEASE SEE PETS ON PAGE 2

Moving Forward Milwaukie running

The Moving Forward Milwaukie project kicked off on Oct. 3rd with a public event that included instant polling and a visual preference survey, which provided direction to the project team about the kinds of buildings and businesses the community wants to see Downtown.

The aim is to have a project under development by the time the project wraps-up in December 2014.

Also during October, the project team interviewed local stakeholders (including City

PLEASE SEE MFM ON PAGE 2

Donate a bike for a local child

This month's Councilor Column is written by Councilor Dave Hedges. To contact Dave, call 503-786-7512 or email hedgesd@MilwaukieOregon.gov.



Throughout the year our Police Department responds to dozens of calls about abandoned bicycles.

Each found bicycle's serial number is checked to determine whether the property had been reported stolen. The Police Department must hold the abandoned property for a

designated period of time.

The police property room is commonly overflowing with unclaimed bicycles. With no known owners, the bikes must eventually be discarded. Two years ago Officer Billy Wells suggested that the unclaimed children's bikes could be taken to a local school and given to children who might not otherwise get to own a bike.

A small project has grown into a bigger one; last year four Milwaukie elementary schools and Rowe Middle school each received ten bikes. Not all were from the property room; thanks to some kind donations we were able to buy bikes from Walmart, who lets us have them for the price they pay for them. The Department cannot continue to spare the time to organize the Bike Giveaway for 2014, so the Milwaukie Public Safety Foundation has taken the project on. As the good weather days come to an end and bikes get put away for the winter, if you have a child's bike which will be replaced as your child grows would you please consider donating it to the Foundation for use in this program.

The schools select which children receive the bikes, and the Milwaukie Police Department will continue to give the bikes to the children. Any help you can give will be really appreciated by the kids.

If you have a bike but need it collected please call Dave Hedges 971-222-5299, otherwise bikes can be taken to the Public Safety Building, Monday to Friday from 8 a.m. to 5 p.m.

Be Seen ... Be Safe

As daylight-saving time goes away, now is the time to stop a minute and consider how visible you and your family are when biking and walking. This is the time of year when people need to "dress" to be seen, and drivers should be especially alert to seeing everyone.

Here are some tips to brighten your night:

1. **Be reflective.** Drivers can see bicyclists and pedestrians from farther away when they shine. For example, you are first visible to a driver from 500 feet away when you are wearing reflective clothing. Compare this to just 55 feet away when wearing dark colors.
2. **Add more shine.** Wear shoes, backpacks, jackets and other clothing with reflective materials. Do it yourself by adding inexpensive reflective tape strips to your shoes, backpack, purse, bike wheel spokes, jacket sleeves, pant legs—really, anywhere and everywhere! Reflective vests and hats are great as well.
3. **Use lights freely.** Headlights, armbands with lights, leg bands with blinking lights, small blinking lights on your coat, purse or backpack... All of these items can help you be seen while biking or walking.

BE PREPARED

Always keep extra medications, prescription and medical info in your emergency supply and "go" kits.

During a disaster, you may have to wait days to access or refill meds. Think about having a general first aid kit too, and make sure everything in it is useable!

PAY ATTENTION NOW and access what you need in your "go" kit! After a disaster or emergency, it's too late for "shoulds" or "woulds"!

MFM FROM PAGE 1

leaders and opportunity site owners), conducted a market study to evaluate Milwaukie's regional position, met with the Project Advisory Committee for the second time on Oct. 21st, and held two workshops on Oct. 28th and 29th to determine the ideal design and uses of the seven project "development opportunity sites."

In November, the project team will brief City Council on the results of the market study on Nov. 5th, put together a construction cost matrix to determine the costs of different building types and materials, and draft some preliminary development concepts for the opportunity sites. Those concepts will be shared with Council on Dec. 3rd.

For more information about the project, contact Li Alligood at 503-786-7627 or alligoodl@milwaukieoregon.gov.

PETS FROM PAGE 1

Nov. 24th, 1 - 4:30 p.m., Pet First Aid: Knowing What to Do When Minutes Count. This is NOT a pet first aid certification course.

Location of All Three Classes: Clackamas Fire District #1's Milwaukie Station #4, 6600 SE Lake Road. Please RSVP at www.JoBecker.weebly.com/AIDpresentations.html.

Building Milwaukie

Updates on projects from the Community Development Department

Quiet Zone Project - 37th Avenue & Oak Street Quiet Zone Improvements

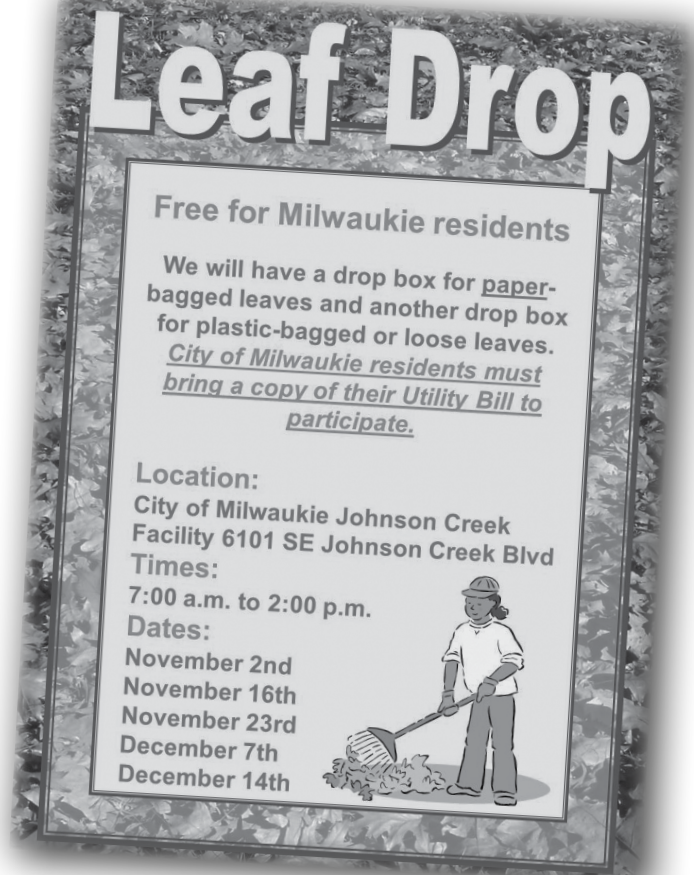
- The last phase of improvements for the Union Pacific Mainline Quiet Zone is underway. Notice to proceed was to be issued to the contractor in late October, with the project expected to be finished within 60 days.
- Once this last work has been completed, the City will notify the Federal Railroad Administration (FRA) and ask for the establishment of a Quiet Zone.

ADA Ramp Enhancement 2013 Project

- This project will upgrade 42 pedestrian curb ramps throughout the City. This project is funded by Clackamas County's Community Development Block Grant (CDBG) Program.
- The County's Community Development Department advertised the project Monday Oct. 21st, with bid opening on Nov. 7th.
- Construction is scheduled to begin mid to late November, with a contract length of 60 days.

Permit Activity - Building & Planning

- Bob's Red Mill is undergoing a 2,800 square foot expansion to their kitchen facility on International Way.
- Royalton Place (5555 SE King Road) is converting an additional 16 senior apartments to Assisted Living.
- Post-landslide repairs of Milwaukie Presbyterian Church's parking lot (Lake Rd.) are occurring.
- Improvements to the varsity ball field's backstop at Milwaukie H.S. practice field (Lake Rd.) were recently approved by the City.



Cover Oregon questions?

HealthPlans NW, Certified Agents for Cover Oregon, the Oregon Health Insurance Exchange, has opened a Health Insurance Enrollment Center at 14001 SE McLoughlin Blvd. to answer questions and to assist in enrollment.

Free daily seminars cover detailed information about both medical and dental health insurance coverage and financial assistance available to Oregon individuals and families through Cover Oregon. Presentations are at 12, 3 and 6 p.m. Mon-Fri., and 12 p.m. on Sat. Full-time enrollment assistance is also available at six computer stations logged onto Cover Oregon.

Financial assistance for monthly health insurance premiums, deductibles and co-pays is available through Cover Oregon to individuals and families who qualify based on income and household composition.

To register go to: www.healthplansnw.com, click "Register," or call 503-344-6330.

VISIT DOWNTOWN MILWAUKIE EAT! SHOP! PLAY!



Native Thanksgiving

Written by Greg Hemer, Design & Landmarks Committee

Our local Native Americans, as part of the Upper Chinook tribe, had traditions of Thanksgiving long before pilgrims ever landed on Plymouth Rock or fur traders from Hudson Bay Company met the native people. In fact, it has always been a Native American tradition after the harvest and salmon season to give thanks to the Earth for supplying a beautiful bounty for their survival.

But what food was served at their traditional event? Since turkey, potatoes, and even corn are not native to these lands, what would be their traditional feast?

Salmon was on the menu. In fact salmon was a major trade item for the Native Americans in the land. Elk and deer were on the menu as well. The forests were thick of both animals. In fact many claim Elk Rock got its name from the Clackamas tribesmen running the elk over the cliffs and into the river, where they would capture and lay to rest the animals on the island.

There was bird on the menu. Many migrating birds, as they do today, stop along the waterways to rest or stay for the migrating season. I wonder if the geese ever stopped their 25-foot-long hollowed cedar canoes from ever crossing the river during rush hour? Beside goose, duck was also on the menu.

So this year in honor of our Native American history, serve some salmon, elk, acorns, blackberries, or even a goose. When someone asks you why such an untraditional choice for a part of the meal, you can say, 'No not untraditional, but truly traditional.'

City's Holiday Events set

Decorate an umbrella in the theme of your choice and join the Milwaukie **Umbrella Parade and Tree Lighting** on Sat., Dec. 7th.

Convene in the Waldorf School School parking lot by 3:30 p.m. (21st and Monroe). The parade will march at 4 p.m. Tree Lighting will follow at City Hall around 4:30 p.m.



Come down to Milwaukie Riverfront Park and watch the Christmas Ship fleet cruise the Willamette River at the **Winter Solstice Event** on Dec. 14th! Warm by the bonfire, enjoy yummy treats (for sale) and listen to the carols. The ships are scheduled to cruise by around 5:30 p.m.

For more information about either event please call Beth Ragel, Program Services Coordinator, at 503-786-7568.

See a streetlight that's out?

If you see a streetlight that's out or damaged within the City of Milwaukie the best course of action is to contact Portland General Electric, which maintains the City's lights.

To report an issue, call 503-736-5710 and be ready to have the map and pole numbers found on the pole tag. A pole tag is a three-inch round metal tag located about eye-level and lists the streetlight's map number and pole number.

You can also report a streetlight problem with that same information at PGE's website: <http://tinyurl.com/yfnele4>.

The City Code Corner

Written by Tim Salyers, Code Compliance Coordinator

Milwaukie's Municipal Code has laws in place so one property does not create a nuisance for another property. Noise, odor, and many other types of nuisances occur and our Department is called to help.

Sometimes we do receive calls that are neighbor-to-neighbor issues, but we can't help because we simply don't have the codes and laws in place. There is hope, though. *Neighbor Law* is a book that addresses some issues that just don't fit in the realm of code enforcement, such as tree limbs that cross property lines. This book is available at our Ledding Library.

If you have questions give me a call at 503-786- 7409.

The Chief's Corner

Written by Bob Jordan, Chief of Police

November is National Red Ribbon Month, dedicated to efforts to stop drunk driving. According to Mothers Against Drunk Driving (MADD) the anti-drunk driving advocacy group, on average someone is killed by a drunk driver every 45 minutes. MADD also reports that about three in every ten Americans will be involved in an alcohol-related crash at some time in their lives. Residents are reminded that local and regional law enforcement efforts are focused on this traffic safety issue.

Please don't drink and drive, but if you must drink, please ensure that you have a designated driver with you who is not drinking, or call a cab.

Name that Bridge

TriMet is inviting the public to name the new bridge that's being constructed over the Willamette River as part of the Portland-Milwaukie Light Rail Project.

Suggested names can be submitted through TriMet's website, www.trimet.org/namethebridge, through Dec. 1st. The bridge will be one of a kind - only carrying buses, trains, cyclists and pedestrians - no private vehicles.

A selection committee, chaired by Chet Orloff, Director Emeritus of the Oregon Historical Society and a 22-year member of the Oregon Geographic Names Board, will pare down all of the submittals to a short list for further public comment.

Final names will be forwarded by the committee to the TriMet General Manager for final selection in spring 2014. Enter your idea for a chance of becoming a part of history.



Something for everyone at Library in November

Nov. 2nd – **First Saturday Music Series: Cello Bop** - 2 p.m. to 3 p.m. at the Ledding Library, 10660 SE 21st Ave. The Friends of Ledding Library present Gideon Freudmann's cello art for your listening enjoyment.

Nov. 7th - **Ledding Cultural Forum: Kim Stafford**, Author of *100 Tricks Every Boy Can Do*, 7 p.m. to 8 p.m. at the Pond House, 2215 SE Harrison St.

Nov. 13th - **Milwaukie Poetry Series Monthly Reading: Verlena Orr** – 7 p.m. to 8 p.m. at the Pond House.

Nov. 14th & 21st, 2013 - **Trivia Night with "The Librarian"** - 7 p.m. at the GameRoom, 1926 SE Scott St.

Individuals and teams of up to 4 compete nightly for prizes in a quest to find out: Do you know more than a librarian?

Nov. 20th - **Xbox 360 Game Night in the Library** – 6:30 p.m. to 8:30 p.m. in the Ledding Library Young Adult Section. Patrons will be able to play the Library's newest Xbox 360 games in the Library.



Gideon Freudmann • CELLOBOP

Center offers help for utilities

The Low Income Energy Assistance Program (LIEP) is a federally-funded program designed to assist low income people with their utility bills, and is offered through Clackamas County Social Services.

During November, the Milwaukie Center is able to offer an early sign-up for seniors 60 years and older or are disabled.

Individuals must meet income eligibility and be residents of North Clackamas Parks District. LIEAP eligibility is determined using gross income (before taxes). The 2013-2014 income guidelines are as follows: One person household: under \$1,808.91 per month, two person household: under \$2,365.49 per month. Proof of income is required. To schedule your appointment with the social service staff, phone 503-653-8100.

Pain in the drain Library Toy Drive ramps up

Many household cleaning products are labeled and marketed as "disposable" but that doesn't mean you should flush them down the toilet.

These types of items include: Disinfecting wipes, baby wipes, mop refills, paper towels, towelettes.

The problem with these products is that they don't dissolve once they are flushed; instead, they clog private pipes that extend between your home and the sewer in the street, which can cause expensive and time-consuming repairs for you, the homeowner.

On a larger scale, these products also get tangled up and stuck in public sewer pipes and pump station equipment which leads to unpleasant sewer backups.

Save yourself and your wastewater utility from pain in the drain – dispose of wipes, rags and towels in the trash, not in the toilet.

In what has become one of the City's proudest Holiday Season traditions, the Ledding Library will begin collecting toys in November for Milwaukie's less fortunate children as part of its annual Toy Drive.

Every year the community donates hundreds of toys to local elementary schools and the Annie Ross House.

If you are interested in donating to this cause, please drop off a new toy at the front desk of Ledding Library (10660 SE 21st Ave.) before Dec. 24th.

The most popular presents are dolls, cars, Legos, board games and gifts related to arts and crafts. Any and all gifts, however, will be greatly appreciated.

For more information, please contact Library Circulation Supervisor Nancy Wittig at 503-786-7582.

Each Neighborhood Association has a Land Use Chair monitoring applications the City receives. To help track the process, these are upcoming Land Use/Development Review hearings, and Planning

Commission (PC) Agenda items. Dates are subject to change. Check the City's website for details.

- **November 12** - Vet Clinic Design Review; Moving Forward Milwaukie
- **November 26** - None Scheduled at Time of Print

HISTORIC MILWAUKIE

NEXT MEETING INFORMATION:

Nov. 11th, 6:30 P.M., POND HOUSE
WRITTEN BY JEAN BAKER, CHAIR

Our folks regularly cover nearly every City committee, board and commission meeting that is deciding issues about our area. They lobby for livability, safety and protecting our property values as the City takes giant steps into the Milwaukie of the 2000's.

ODOT is resuming the PASSENGER RAIL PLANNING discussions with the public to select the route to be taken by the new trains.

We support an alignment using I-5 and I-205 that will then turn west in the far north of Portland, heading downtown and to Vancouver and northward.

Our Nov. 11th meeting we will begin work on a Neighborhood Transportation Plan. The larger, City-wide project (TSP) is essentially done. We continue to see the necessity of having a plan that addresses the combined impacts of the City inventory and growing numbers of trains, trucks, speeders, bikes, pedestrians, school children -- all of which are using our four east/west streets built many decades ago.

Our job now is to create a

Neighborhood plan that can be used as a development guide as changes are proposed by the City or developers. Evaluating the City proposal to make Monroe Street a bike greenway will be but one of our projects.

Next month we will have a Neighborhood website we can all share for important Neighborhood news we don't have room for in the Pilot. We are seeking old photos.

Correction: Oregon Planning Goals (our rights and rules) <http://www.oregon.gov/LCD/pages/goals.aspx>. It is an Oregon first and an amazing piece of work.



LAKE ROAD



NEXT MEETING INFORMATION:

Nov. 13th, 6:30 P.M., ROWE MIDDLE SCHOOL
BY DEBBY PATTEN, CHAIR

As I sat in the traffic for at least a half an hour on the way to work today due to the construction of the Orange Line, it was hard for me to see a light at the end of this tunnel. On Saturday, I had to stop down by the High School on Lake Road and wait while a truck moved around. It was very annoying. I could continue...but you get my drift.

Change is hard. Milwaukie is changing; that is a fact. I found a great quote by Maya Angelou that is perfect for this situation: "If you don't like something, change it. If you can't change it, change your attitude."

When the Light Rail is running, I will have to change how I get to work. I have considered parking at the Park Avenue Park & Ride. I have considered riding my bike or walking down Lake Road to where the Light Rail stop will be. I guess I could ride the 32 bus for three minutes. Thinking about it gives me a headache.

Change is coming. Obviously, I have to change my attitude, too. When Light Rail comes, it will be way easier to get home after 6 p.m. from downtown Portland. Also, I won't be stranded downtown till 1 a.m. ever again after the Starlight Parade due to overly-crowded buses. My commute will be shorter.

Hey, look at that new attitude...



HECTOR CAMPBELL



NEXT MEETING INFORMATION:

Nov. 11th, 7 P.M., PSB
DAVE ASCHENBRENNER, CHAIR

Hi Neighbors. As for happenings in the Neighborhood, the construction at 37th and Railroad is the next part of the construction of the railroad quite zone project. There will be a closure of this intersection for upgrades to the tracks and streets. The project will also include improvements at the Oak St. railroad crossing, too.

The Campbell Community Garden is now moving into the fall/winter planting season. Yes, some people do garden year-round. This year the garden donated over 1,200 lbs.

of food to those in our community who are in need. If you are interested in more information please visit their web site at www.campbellgarden.org.

Remember as the weather turns colder; please take the time to look out for neighbors and pets. Watch for people walking in the Neighborhood and slow down. And if you see anything suspicious, please call the police. That is why they are there.



LINWOOD

NEXT MEETING INFORMATION:

NOV. 14TH, 7 P.M., LINWOOD ELEMENTARY

BY ZAG PERRY, CHAIR

Please slow down while driving through your Neighborhood streets especially during the morning and after-work commute times. Kids making their daily migration to and from school at these dawn and dusk hours often are forced to walk in the streets and bike lanes - near Linwood Elementary because there is not a connecting path of sidewalks - and consequently no bus service for those whom live within 1-mile of the school.

Also keep in mind the many non-profits in your area that need help providing basic services to our community this season. It is estimated that over 70% of our children that attend Linwood Elementary seek reduced or free lunches because they come from environments that struggle to financially put food on their own tables on a daily basis. It has been observed that if students come to school hungry they have a harder time learning and paying attention in school.

Consider helping out non-Profits like the Annie Ross House, which provides jobs and housing to those in need, 'BackPack Buddies' which provide basic food needs to students over the weekends so kids don't go without meals outside of the school environment. There are many local organizations that seek your expertise. Please use this season to give back.

→ ARDENWALD/JOHNSON CREEK ←

NEXT MEETING INFORMATION:

NOV. 12TH, 6:30 P.M., MILWAUKIE GRIND

WRITTEN BY RUSS STOLL, MEMBER-AT-LARGE

As part of the Portland-Milwaukie Light Rail Project, TriMet called on Neighborhood groups and other stakeholders to come up with enhancements to the new stations. At the Tacoma Station, Ardenwald-Johnson Creek neighbors, working with Sellwood-Moreland Improvement League, Johnson Creek Watershed Council and others, agreed on a plan to build a fish habitat and boardwalk.

We are pleased to announce that the fish habitat has been completed. Large boulders and logs are part of the project, improving habitat complexity.

During high water the channel will fill and provide a resting place for migrating salmon on their way up Johnson Creek. Due to the channelization of the creek during the 1930's, there are few places for fish to escape the fast water flows. This improvement will increase opportunities for Johnson Creek to restore its salmon run.

Funds are still being raised for the second phase of the project, a boardwalk with interpretive signage describing the history of the site and local flora and fauna.

LEWELLING

NEXT MEETING INFORMATION:

NOV. 13TH, 7 P.M., LEWELLING ELEMENTARY

WRITTEN BY BRYAN TROTTER, CHAIR

The Lewelling Neighborhood is a great place to raise family! Each year I see more and more families with children walking the streets of our Neighborhood, enjoying our Ball-Michel Park, playing sports at the school fields, and having fun in their front yards. We also live in a greater community that offers easy access to shopping, downtown activities, the Springwater Trail, and a continuously improving Riverfront Park.

It takes a lot of ongoing work to build the elements of our community that make us happy and there is something for everybody to get involved with as we continue moving forward.

Improving the safety and commute options of our transportation system, planning future redevelopment of commercial areas, investing in parks and recreation, supporting our school children and families in need, keeping our Neighborhoods litter-free, and bringing local access to art and music are just some of the key topics we have the chance to influence.

At our November meeting we will decide which road the Neighborhood will adopt, finalize plans for our concession booth at the Winter Solstice bonfire, review land use planning, and continue the discussion of how to help our kids and families that are struggling.

If you cannot attend but want to have a voice or learn about other ways to participate, get added to our email distribution by contacting me at trottenalong@hotmail.com. Your email address will not be shared and communications are kept to a minimum.

ISLAND STATION

NEXT MEETING INFORMATION:

NOV. 6TH, 6:30 P.M., MILWAUKIE GRANGE

BY JO ANNE BIRD, CHAIR

We had a fair turnout at the Great Willamette Clean-up in Spring Park on Oct. 5th. We got several bags of trash out of the Park as well as on Elk Rock Island and got to meet some new people involved in our community.

There is a series of three, free workshops in November on taking care of your animals in times of disaster. If you're interested, the contact is: www.JoBecker.weebly.com/AIDpresentations.html For more information see page 1.

Also, on Dec. 2nd there is a Winter Preparedness Workshop from 6:30 - 7:30 p.m. at the Public Safety Building, presented by the Public Safety Advisory Committee.



City of Milwaukie
 10722 SE Main Street
 Milwaukie, Oregon 97222
 To reach the Editor of The Pilot:
 (503) 786-7503 ~ wheeler@MilwaukieOregon.gov

Presorted
 Standard
 U.S. Postage
 PAID
 Portland, OR
 Permit 990

ECRWSS

Postal Customer

WHICH NEIGHBORHOOD DO YOU LIVE IN? DON'T KNOW? CALL 503-786-7568!

ARDENWALD-JOHNSON CREEK
 Meetings held on second Tuesdays
 6:30 p.m., Milwaukie Grind, 9401 SE 32nd Ave.
 Chair, Jeff Davis
 Neighborhood Website: www.ardenwald.org

ISLAND STATION **NEW DATE!**
 Meetings held on first Wednesdays
 6:30 p.m., Milwaukie Grange, 12015 SE 22nd Ave.
 Chair, Jo Anne Bird, 503-653-0857
 email: IslandStationNDA@gmail.com

LINWOOD
 Meetings held on second Thursdays
 7 p.m., Linwood Elementary, 11909 SE Linwood Ave.
 CoChairs Beth Kelland, Zac Perry
 email: LinwoodNA@msn.com
 Linwoodzp@gmail.com

HECTOR CAMPBELL
 Meetings held on second Mondays
 7 p.m., Public Safety Building, 3200 SE Harrison St.
 Chair, David Aschenbrenner
 Neighborhood Website: www.hectorcampbellnda.org

LAKE ROAD
 Meetings held on second Wednesdays
 6:30 p.m., Rowe Middle School, 3606 SE Lake Rd.
 CoChairs Debby Patten & Vince Alvarez
 email: lakeroadna@netscape.net

HISTORIC MILWAUKIE
 Meetings held on second Mondays
 6:30 p.m., Pond House, 2215 SE Harrison St.
 Chair, Jean Baker, 503-659-4070
 email: jeanbaker.milw@gmail.com

LEWELLING
 Meetings held on second Wednesdays
 7 p.m., Lewelling Elementary, 5325 SE Logus St.
 Chair Bryan Trotter
 email: trotenalong@hotmail.com



SUBSCRIBE TO RECEIVE THE PILOT ONLINE. VISIT CITY'S WEBSITE, CLICK SUBSCRIPTIONS.

THIS IS YOUR CITY NEWSLETTER!
TAKE A LOOK INSIDE AND SEE WHAT'S GOING ON!

CITY EVENTS CALENDAR

NOVEMBER 2013

SUNDAY	MONDAY	TUESDAY	WEDNESDAY	THURSDAY	FRIDAY	SATURDAY
MCH - MILWAUKIE CITY HALL, 10722 SE MAIN ST. PSB - PUBLIC SAFETY BUILDING, 3200 SE HARRISON ST. JCB - PUBLIC WORKS BUILDING, 6101 SE JOHNSON CREEK BLVD. MC - MILWAUKIE CENTER, 5440 SE KELLOGG CREEK DR. LED - LEDDING LIBRARY, 10660 SE 21ST AVE. PND - LIBRARY POND HOUSE, 2215 SE HARRISON ST.					Pond House Book Store 11 a.m. to 4 p.m. 1	Pond House Book Store 11 a.m. to 4 p.m. First Saturday Music Series (See Page 5) 2 FREE LEAF DROP (See page 3)
	6PM DESIGN & LANDMARKS COMMITTEE, (MCH)	5PM CITY COUNCIL WORK SESSION, (MCH) 7PM CITY COUNCIL REGULAR SESSION, (MCH)	6PM CITIZEN UTILITY ADVISORY BOARD (JCB) 6:30PM ISLAND STATION NDA, (GRANGE)	Leddling Cultural Forum (See page 5)	9:30AM MILWAUKIE CENTER ADVISORY BOARD (MC)	Pond House Book Store 11 a.m. to 4 p.m. 9
Pet Emergency Preparedness Class (See page 1)	4	5	6	7	8	Pond House Book Store 11 a.m. to 4 p.m. FREE LEAF DROP (See Page 3)
10	6:30PM HISTORIC MILWAUKIE NDA, (PND) 7PM HECTOR CAMPBELL NDA, (PSB)	6:30PM PLANNING COMMISSION, (MCH) 6:30PM ARDENWALD NDA, (MILWAUKIE GRIND, 9401 SE 32ND AVE.)	6:30PM LAKE ROAD NDA, (ROWE MIDDLE SCHOOL) 7PM LEWELLING NDA, (LEWELLING ELEMENTARY) Milwaukie Poetry Series (See page 5)	7PM LINWOOD NDA, (LINWOOD ELEMENTARY)	Pond House Book Store 11 a.m. to 4 p.m.	Pond House Book Store 11 a.m. to 4 p.m. FREE LEAF DROP (See Page 3)
Pet Emergency Preparedness Class (See page 1)	11	12	13	14	15	16
Pet Emergency Preparedness Class (See page 1)	5:30PM MONTHLY LIGHT RAIL MEETING, 2300 SE BETA ST. 6:30PM MOVING FORWARD MILWAUKIE (SEE PAGE 1)	7:30AM PARKS BOARD, (MCH) 5PM CITY COUNCIL WORK SESSION, (MCH) 7PM CITY COUNCIL REGULAR SESSION, (MCH)	5:30PM KELLOGG GOOD NEIGHBOR, (KELLOGG PLANT) 5:30PM ARTMOB, (MCH) 7:00PM BOARD & COMMITTEE ELECTION LAW TRAINING, (MCH)	5PM CITY COUNCIL STUDY SESSION, (MCH)	Pond House Book Store 11 a.m. to 4 p.m.	Pond House Book Store 11 a.m. to 4 p.m. FREE LEAF DROP (See Page 3)
Pet Emergency Preparedness Class (See page 1)	17	18	19	20	21	22
Pet Emergency Preparedness Class (See page 1)	5:30PM LIBRARY BOARD, (PND)	6:30PM PLANNING COMMISSION, (MCH)		CITY OFFICES CLOSED	CITY OFFICES CLOSED	23
24	25	26	27	28	29	30

